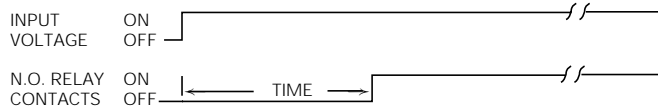




Timing Mode

Delay on operate – Delay period begins when input voltage is applied. At the end of the delay period, the relay will operate and will not release until input voltage is removed. Reset occurs when input voltage is reapplied.



CL Timing Specifications

Timing Ranges: From 0.1 to 1.0 sec. through 1.2 to 120 sec.

Timing Adjustment: Fixed, external resistor and knob adjustable.

Tolerance (for AC units add $\pm 1/2$ cycle 60 Hz.):

Knob Adj. Types: -0, +20% of max. specified at high end of timing range; min. specified, or less, at low end.

Fixed Types: $\pm 5\%$.

Res. Adj. Types: $\pm 10\%$ at high end of timing range; min. specified, or less, at low end.

Repeatability (for AC units add ± 1 cycle 60 Hz.): $\pm 3\%$.

Release Time: 100 ms, typ.; 150 ms, max.

Recycle Time: 100 ms, typ.; 150 ms, max.

CU Timing Specifications

Timing Ranges: From 1.0 to 10 sec. through 1.0 to 120 sec.

Timing Adjustment: Fixed, external resistor and knob adjustable.

Tolerance (for AC units add $\pm 1/2$ cycle 60 Hz.):

Knob Adj. Types: -0, +20% of max. specified at high end of timing range; min. specified, or less, at low end.

Fixed Types: $\pm 5\%$.

Res. Adj. Types: $\pm 10\%$ at high end of timing range; min. specified, or less, at low end.

Repeatability (for AC units add ± 1 cycle 60 Hz.): $\pm 3\%$.

Release Time: 150 ms, typ.; 225 ms, max.

Recycle Time: 150 ms, typ.; 225 ms, max.

Note: On CU types the switching contact may momentarily transfer if the timing interval is interrupted. CL types have no timing cycle interrupt transfer.

CL Ordering Information – Authorized distributors are more likely to stock boldface items listed below.

Voltage	Time	Adjustment	Wiring Dia.	Part Number
24VAC	0.1 to 10 Sec.	Knob	1	CLB-51-30010
24VAC	0.1 to 10 Sec.	Resistor	2	CLF-42-30010
120VAC	0.1 to 10 Sec.	Knob	1	CLB-51-70010
	0.3 to 30 Sec.			CLB-51-70030
	1.2 to 120 Sec.			CLB-51-70120
120VAC	3 Sec.	Fixed	1	CLA-41-70003
	30 Sec.			CLA-41-70030
120VAC	0.1 to 10 Sec.	Resistor	2	CLF-41-70010
	0.1 to 10 Sec.			CLF-42-70010
	1.2 to 120 Sec.			CLF-41-70120

CL-CU series

Compact Time Delay Relay

- Delay on operate timing mode
- Fixed, knob or resistor adjustable types
- 10A output relay with DPDT contacts
- Variety of mounting options
- Various models time from 0.1 to 120 sec.
- No timing cycle interrupt transfer (CL only)

File E22575

File LR15734

Users should thoroughly review the technical data before selecting a product part number. It is recommended that user also seek out the pertinent approvals files of the agencies/laboratories and review them to ensure the product meets the requirements for a given application.

Contact Data @ 25°C

Arrangements: 2 Form C (DPDT).

Material: Silver-cadmium oxide alloy.

Rating: 10A @ 30VDC or 277VAC, resistive; 1/2 HP @ 250VAC; 1/3 HP @ 120VAC.

Expected Mechanical Life: 10 million operations.

Expected Electrical Life: 100,000 operations, min., at rated load.

Initial Dielectric Strength

Between Open Contacts: 500V rms, 60 Hz.

Between All Other Conductors: 500V rms, 60 Hz.

Input Data @ 25°C

Voltage: 24 & 120VAC and 12 & 24VDC.

Power Requirement: AC Types: Typically less than 3 VA.

DC Types: Typically less than 3 W.

Transient Protection: Yes.

Reverse Voltage Protection: Yes.

Input Voltages & Limits @ 25°C

Voltage Type	Nominal Voltage	Minimum Voltage	Maximum Voltage
AC	24	20	28
	120	105	130
DC	12	11	13
	24	20	32

Note: DC voltage must be filtered (5% p-p ripple max. at nom. voltage). AC models will operate on 50 or 60 Hz.

Environmental Data

Temperature Range: Storage: -55°C to +85°C.

Operating: -10°C to +55°C.

Mechanical Data

Termination: 0.187 in. (4.75mm) quick-connect.

Enclosure: Yellow plastic case (see outline drawings for various options).

Knob adjustable types have dial scale for reference only.

Sockets: Solder, printed circuit and screw terminal sockets available.

Weight: 3.5 oz. (99g) approximately.

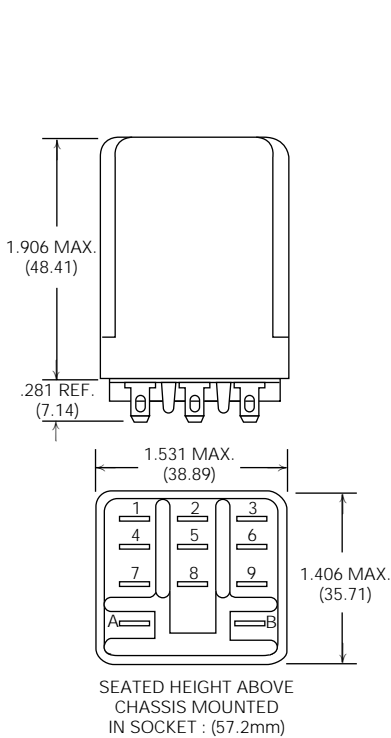
CU Ordering Information – Authorized distributors are more likely to stock boldface items listed below.

Voltage	Time	Adjustment	Wiring Dia.	Part Number
24VAC	10 Sec.	Fixed	1	CUA-41-30010
24VAC	1 to 10 Sec.	Resistor	2	CUF-41-30010
24VAC	1 to 10 Sec.	Resistor	2	CUF-42-30010
120VAC	1 to 10 Sec.	Knob	1	CUB-51-70010
120VAC	1 to 30 Sec.	Knob	1	CUB-51-70030
120VAC	1 to 60 Sec.	Knob	1	CUB-51-70060
120VAC	1 to 120 Sec.	Knob	1	CUB-51-70120
120VAC	1 Sec.	Fixed	1	CUA-41-70001
120VAC	3 Sec.	Fixed	1	CUA-41-70003
120VAC	3 Sec.	Fixed	1	CUA-42-70003
120VAC	5 Sec.	Fixed	1	CUA-41-70005
120VAC	10 Sec.	Fixed	1	CUA-41-70010
120VAC	10 Sec.	Fixed	1	CUA-42-70010
120VAC	30 Sec.	Fixed	1	CUA-42-70030
120VAC	120 Sec.	Fixed	1	CUA-41-70120

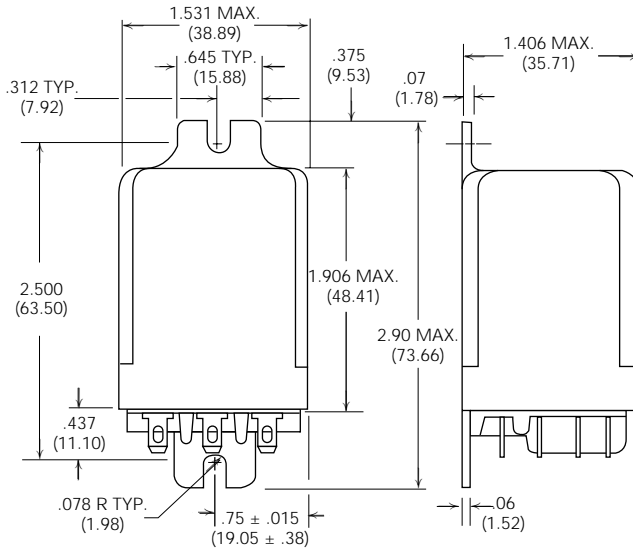
Voltage	Time	Adjustment	Wiring Dia.	Part Number
120VAC	1 to 10 Sec.	Resistor	2	CUF-41-70010
120VAC	1 to 10 Sec.	Resistor	2	CUF-42-70010
120VAC	1 to 30 Sec.	Resistor	2	CUF-41-70030
120VAC	1 to 120 Sec.	Resistor	2	CUF-41-70120
120VAC	1 to 120 Sec.	Resistor	2	CUF-42-70120
24VDC	1 to 10 Sec.	Resistor	2	CUH-41-30010
24VDC	1 to 10 Sec.	Resistor	2	CUH-42-30010
24VDC	1 to 120 Sec.	Resistor	2	CUH-41-30120
24VDC	1 to 120 Sec.	Resistor	2	CUH-42-30120

41 style models (e.g. CUA-41-70010) have plain case.
42 style models (e.g. CUA-42-70010) have bracket mount case.
51 style models (e.g. CUB-51-70010) have plain case with knob.

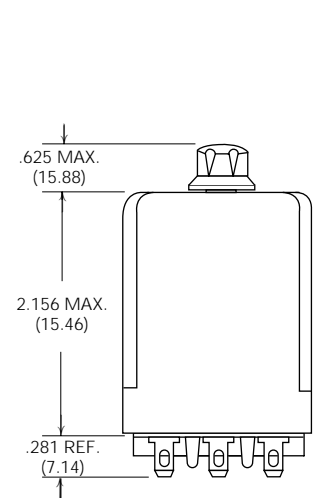
Outline Dimensions
41 Style



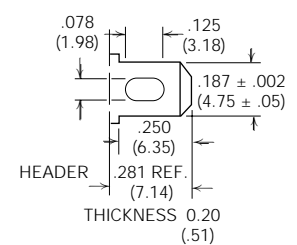
42 & 45 Style



51 Style



Terminal Dimensions
.187" (4.74mm)
Quick Connect/Solder



Wiring Diagrams – Bottom Views

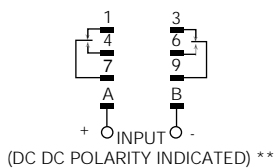


Fig. 1

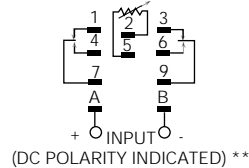


Fig. 2

**** Note:** Input polarity for DC operation. For most reliable operation on AC, connect high side to "+" and low side to "-".

External Resistor Selection Chart

See External Resistor Selection Charts at beginning of Time Delay Relay section of this Databook.

Mouser Electronics

Authorized Distributor

Click to View Pricing, Inventory, Delivery & Lifecycle Information:

[TE Connectivity:](#)

[CLF-41-70010](#)