

SAFETY ORGANIZATION(S):

THIS FILTER HAS BEEN FORMALLY RECOGNIZED, CERTIFIED OR APPROVED BY THE LISTED AGENCY. THEREFORE, ALL TEST/REQUIREMENTS SPECIFIED IN THE LATEST REVISION OF THE FOLLOWING AGENCY STANDARDS HAVE BEEN MET:

- UL 1283
- CSA 22.2, NO.0,0.4,8
- VDE 565-3

OPERATING SPECIFICATIONS:

LINE VOLTAGE/CURRENT:

- 10 AMP., 120/250 VAC
- 8 AMP./40°C, 250 VAC

50-60Hz

.75mA @ 120V 60Hz

1.25mA @ 250V 50Hz

-10°C TO +40°C @ RATED CURRENT, I_r

LINE FREQUENCY:

MAX. LEAKAGE CURRENT, EACH

LINE TO GROUND

OPERATING AMBIENT TEMP. RANGE:

IN AN AMBIENT, T_a, HIGHER THAN 40°C, THE MAXIMUM OPERATING

CURRENT, I_o, IS AS FOLLOWS:

$$I_o = I_r \sqrt{\frac{85-T_a}{45}}$$

RELIABILITY SPECIFICATIONS:

STORAGE TEMPERATURE:

-25°C TO +85°C

HUMIDITY:

21 DAYS @ 40°C 95% RH

CURRENT OVERLOAD TEST:

6 TIMES RATED CURRENT FOR 8 SECONDS

TEST SPECIFICATIONS:

INDUCTANCE:

L-9.5mH NOMINAL

N-9.57mH NOMINAL

CAPACITANCE: MEASURED @ 1 KHz, 0.25 VAC MAX., 25°C ±1°C)

LINE TO GROUND:

.01μF ±20%

LINE TO LINE:

1.77μF ±20%

DISCHARGE RESISTOR:

165KΩ

LINE/GROUND AND LINE/LINE

6000 MΩ (MIN) AT 100 VDC

INSULATION RESISTANCE

20°C AND 50% RH

(W/O DISCHARGE RESISTOR)

RECOMMENDED RECEIVING INSPECTION HIPOT:

LINES TO GROUND:

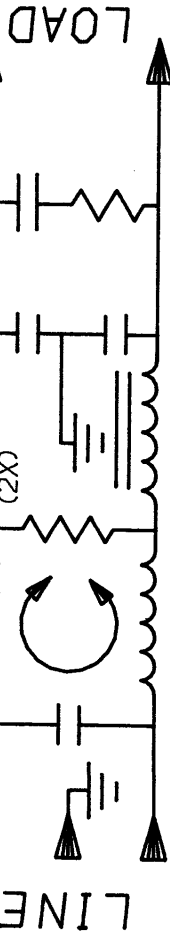
2250 VDC FOR 1 MINUTE

LINE TO LINE:

1450 VDC FOR 1 MINUTE

FILTER APPROVAL:

THE BEST WAY TO SELECT AND QUALIFY A FILTER IS FOR YOUR ENGINEERING TO TEST THE UNIT IN YOUR EQUIPMENT.



50Ω - 50Ω (MINIMUM) INSERTION LOSS												
FREQUENCY MHZ	.01	.02	.05	.15	.50	1.0	2.0	5.0	8.0	10	20	30
COMMON dB	12	18	26	38	52	50	50	50	50	50	50	50
DIFF. dB	7	8	17	52	70	70	70	65	65	65	60	65

This document is proprietary to CORCOM INC. and is not to be reproduced nor used for manufacturing purposes except on CORCOM's order or prior written consent.

TOLERANCE EXCEPT AS NOTED
DECIMAL: .XXX .XX .X ANGLES
ENGLISH: ±.025 ± 1°
METRIC: ±



POWER LINE FILTER

FINISH:

SCALE

DATE
NTS 5-12-88

DRW. BY
TDL

ORIGINATOR
CW

REV.

10VT3.01

Mouser Electronics

Authorized Distributor

Click to View Pricing, Inventory, Delivery & Lifecycle Information:

[TE Connectivity:](#)

[10VT3](#)