

SAFETY ORGANIZATION(S):

THIS FILTER HAS BEEN FORMALLY RECOGNIZED, CERTIFIED OR APPROVED BY THE LISTED AGENCY. THEREFORE, ALL TEST/REQUIREMENTS SPECIFIED IN THE LATEST REVISION OF THE FOLLOWING AGENCY STANDARDS HAVE BEEN MET:

UL RECOGNIZED
CSA CERTIFIED
VDE APPROVED

UL 1283
CSA 22.2, NO.0,0.4,8
VDE 565-3

OPERATING SPECIFICATIONS:

LINE VOLTAGE/CURRENT:
10 AMP., 120/250 VAC
8 AMP./40°C, 250 VAC
50-60Hz
40°C
.5 mA at 120V 60 Hz
1.0 mA at 250V 50 Hz
-10°C TO +40°C @ RATED CURRENT, I_r

LINE FREQUENCY:
MAX. CASE RISE @ RATED CURRENT:
MAX. LEAKAGE CURRENT, EACH
LINE TO GROUND
OPERATING AMBIENT TEMP. RANGE:

IN AN AMBIENT, T_a, HIGHER THAN 40°C, THE MAXIMUM OPERATING CURRENT, I_o, IS AS FOLLOWS:

$$I_o = I_r \sqrt{\frac{85-T_a}{45}}$$

RELIABILITY SPECIFICATIONS:

STORAGE TEMPERATURE:
-40°C TO +85°C
HUMIDITY:
21 DAYS @ 40°C 95% RH
CURRENT OVERLOAD TEST:
6 TIMES RATED CURRENT FOR 8 SECONDS

TEST SPECIFICATIONS:

INDUCTANCE:
CAPACITANCE: (MEASURED @ 1 KHz, 0.25 VAC MAX., 25°C ±1°C)
LINE TO GROUND:
LINE TO LINE:
DISCHARGE RESISTOR
LINE/GROUND AND LINE/LINE
INSULATION RESISTANCE

7.13 mH NOMINAL
0.25 VAC MAX., 25°C ±1°C
.011µF ±20%
.54µF ±20%
330 KΩ
6000 MΩ (MIN) AT 100 VDC
20°C AND 50% RH

RECOMMENDED RECEIVING INSPECTION HIPOT:

LINES TO GROUND:
LINE TO LINE:



2250 VDC FOR 1 MINUTE
1450 VDC FOR 1 MINUTE

FILTER APPROVAL:

THE BEST WAY TO SELECT AND QUALIFY A FILTER IS FOR YOUR ENGINEERING TO TEST THE UNIT IN YOUR EQUIPMENT.

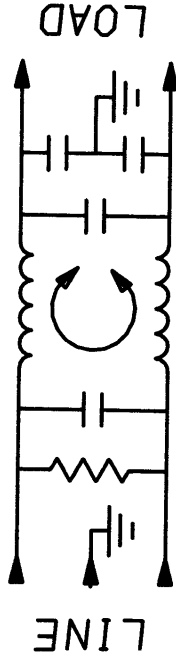
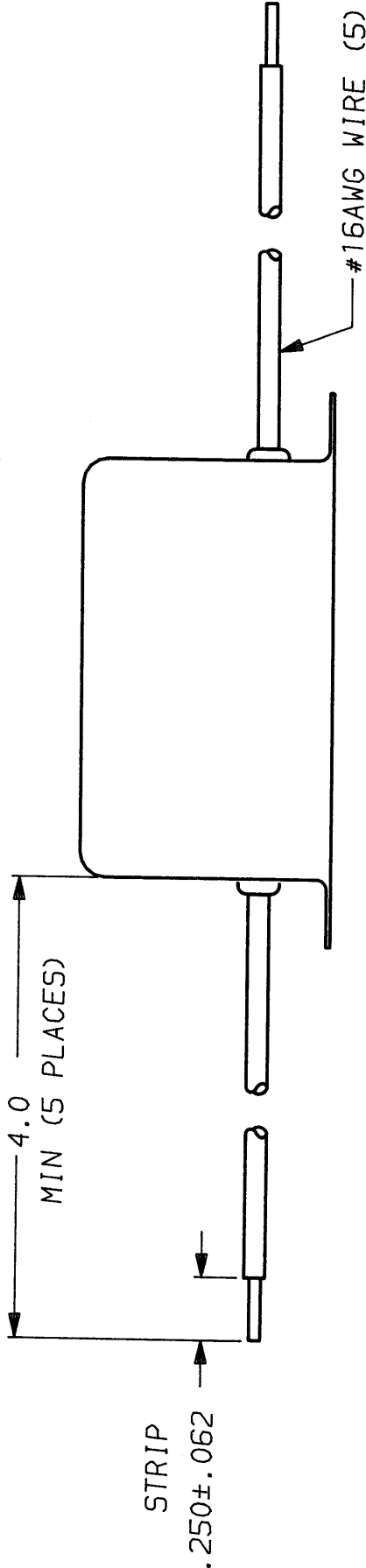
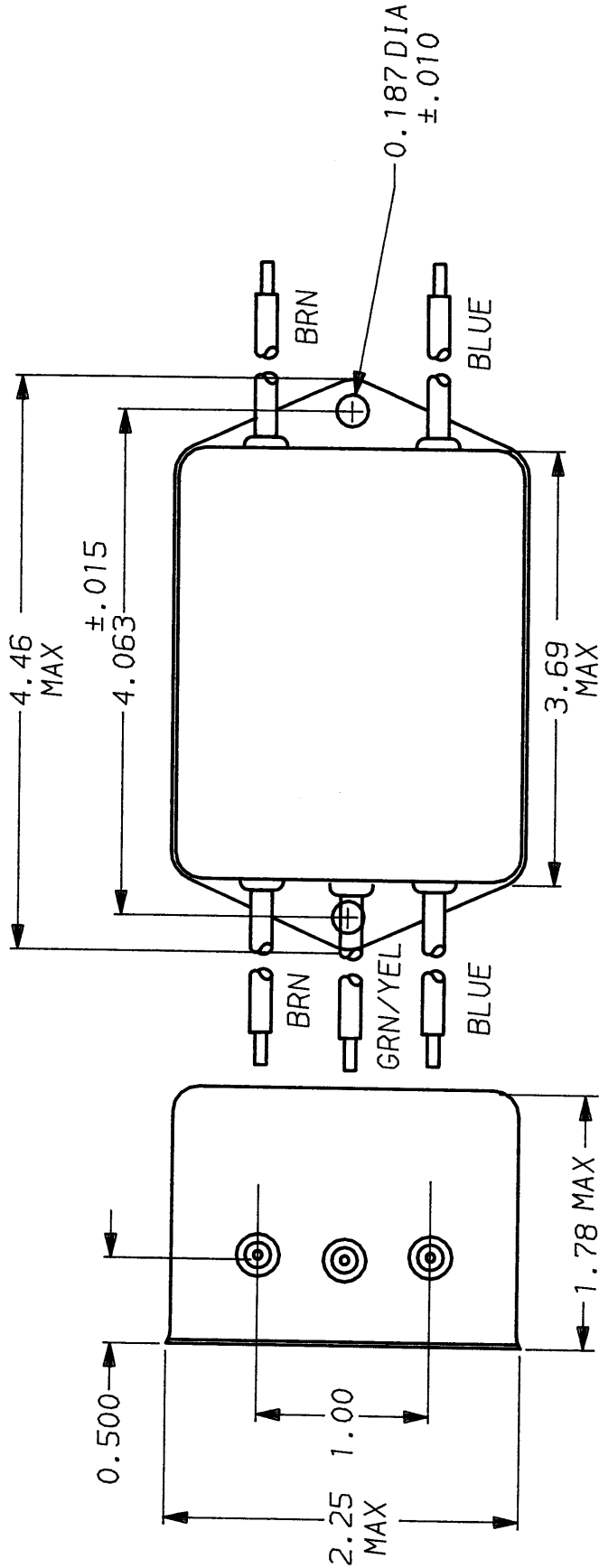
50Ω - 50Ω (MINIMUM) INSERTION LOSS													
FREQUENCY MHz	.01	.02	.05	.1	.15	.5	1	5	10	20	30		
COMMON dB	6	12	20	26	30	45	50	55	55	58	40		
DIFF. dB	1	2	3	3	15	59	65	65	65	50	50		

This document is proprietary to CORCOM INC. and is not to be reproduced nor used for manufacturing purposes except on CORCOM's order or prior written consent.

			
LIBERTYVILLE, IL 60048		LIBERTYVILLE, IL 60048	
POWER LINE FILTER		POWER LINE FILTER	
SCALE	DATE	DRG. NO.	REV.
NTS	8-7-90	10VSK3.	05
DRW. BY	ORIGINATOR		
CFW	CFW		

FINISH:
AS SUPPLIED

AS SUPPLIED



Mouser Electronics

Authorized Distributor

Click to View Pricing, Inventory, Delivery & Lifecycle Information:

[TE Connectivity:](#)

[10VSK3](#)