

SAFETY ORGANIZATION(S):

THIS FILTER HAS BEEN FORMALLY RECOGNIZED, CERTIFIED OR APPROVED BY THE LISTED AGENCY. THEREFORE, ALL TEST/REQUIREMENTS SPECIFIED IN THE LATEST REVISION OF THE FOLLOWING AGENCY STANDARDS HAVE BEEN MET:

- UL 1283
- CSA 22.2, NO.0,0.4,8
- VDE 565-3
- SEV 1055/TP1977/5.1.1

OPERATING SPECIFICATIONS:  
LINE VOLTAGE/CURRENT:

- 10 AMP., 120/250 VAC
- 8 AMP./40°C, 250 VAC
- 50-60Hz

- .3mA @ 120V 60Hz
- .5mA @ 250V 50Hz

MAX. LEAKAGE CURRENT, EACH LINE TO GROUND

OPERATING AMBIENT TEMP. RANGE:

IN AN AMBIENT,  $T_a$ , HIGHER THAN 40°C, THE MAXIMUM OPERATING CURRENT,  $I_o$ , IS AS FOLLOWS:

$$I_o = I_r \sqrt{\frac{85-T_a}{45}}$$

RELIABILITY SPECIFICATIONS:

STORAGE TEMPERATURE:

- 25°C TO +85°C

HUMIDITY:

- 21 DAYS @ 40°C 95% RH

CURRENT OVERLOAD TEST:

- 6 TIMES RATED CURRENT FOR 8 SECONDS

TEST SPECIFICATIONS:

INDUCTANCE:

- L-9.5mH NOMINAL
- N-9.57mH NOMINAL

CAPACITANCE: (MEASURED @ 1 KHZ, 0.25 VAC MAX., 25°C ±1°C)

LINE TO GROUND:

- .004μF ±20%

LINE TO LINE:

- 1.77μF ±20%

DISCHARGE RESISTOR:

- 165KΩ

LINE/GROUND AND LINE/LINE

- 6000 MΩ (MIN) AT 100 VDC

INSULATION RESISTANCE

- 20°C AND 50% RH

(W/O DISCHARGE RESISTOR)

RECOMMENDED RECEIVING INSPECTION HIPOT:

- 2250 VDC FOR 1 MINUTE
- 1450 VDC FOR 1 MINUTE

FILTER APPROVAL:

THE BEST WAY TO SELECT AND QUALIFY A FILTER IS FOR YOUR ENGINEERING TO TEST THE UNIT IN YOUR EQUIPMENT.

50Ω - 50Ω (MINIMUM) INSERTION LOSS												
FREQUENCY MHz	.01	.02	.05	.15	.5	1	2	5	8	10	20	30
COMMON dB	12	18	26	36	47	42	42	40	45	42	42	45
DIFF. dB	7	8	17	52	70	70	70	65	65	55	50	60

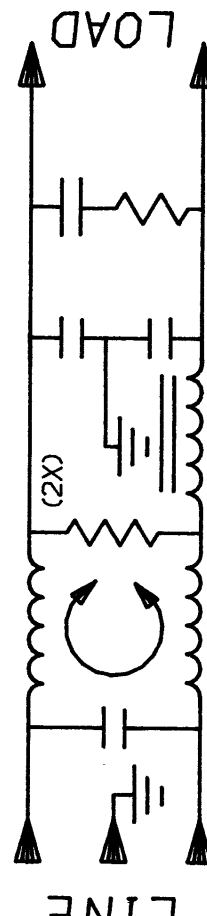
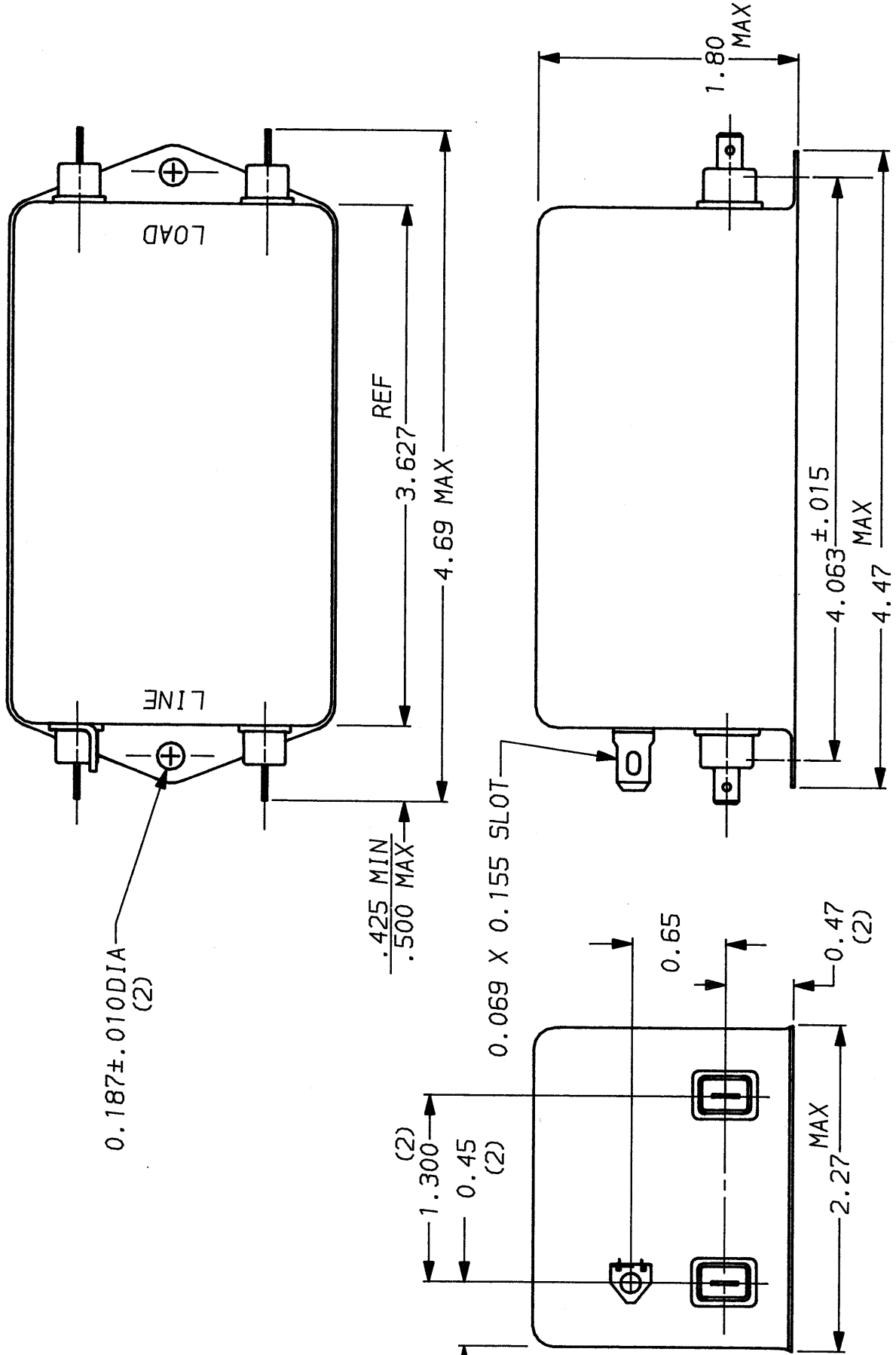
This document is proprietary to CORCOM INC. and is not to be reproduced nor used for manufacturing purposes except on CORCOM's order or prior written consent.

TOLERANCE EXCEPT AS NOTED  
DECIMAL: .XXX .XX .X ANGLES ± 1°  
ENGLISH: ±.025  
METRIC: ±

MATERIAL: AS SUPPLIED

FINISH:

CORCOM		LIBERTYVILLE, IL 60048	
POWER LINE FILTER		REV. NO.	
SCALE	DATE	DRG. NO.	REV.
NTS	5-12-88	10ET1.02	
DRW. BY	ORIGINATOR		
TDL	CW		



# Mouser Electronics

Authorized Distributor

Click to View Pricing, Inventory, Delivery & Lifecycle Information:

[TE Connectivity:](#)

[10ET1](#)