

## FCA-210 Series, 10 Amperes, DPDT



### Product Facts

- Hermetically Sealed
- All Welded Construction
- Balanced Force
- Permanent Magnet Drive
- Contacts — Silver Cadmium Oxide with Gold Plating
- Coils for DC, 50 to 400Hz and 400Hz AC
- Weight 1.6 ounces max. (45.4 grams)
- Qualified to M83536/9, /10

The Series FCA-210 relay is a polarized single-side stable design, where the flux from a permanent magnet provides the armature holding force in the deactivated state, and its flux path is switched when the coil flux in the operated state. This results in appreciably increased contact pressure in both states over that of a spring return nonpolar design. We also

manufacture other versions of this relay:

**FCA-410** — 10 Ampere 4PDT Relay

**FCA-610** — 10 Ampere 6 PDT Relay

#### Available:

**FCA-215** — 15 Ampere DPDT Relay, Has the same specifications as the FCA-210 except is rated at 15 amps. (Commercial Only)

### General Specifications

#### Temperature Rating —

-70°C TO + 125°C

**Altitude** — 300,000 Feet

#### Shock\* —

Z, Y, & X Enclosures —

200 g for 6 mS

W & M Enclosures (Stud Mtg.) —

100 g for 6 mS

#### Vibration, Sinusoidal\* —

Z, Y, & X Enclosures —

30 g 33-3000Hz

W & M Enclosures (Stud Mtg.) —

20 g 33-3000Hz

#### Vibration, Random\* —

Z, Y, & X Enclosures —

0.4 g<sup>2</sup>/Hz 50-2000Hz

W & M Enclosures (Stud Mtg.) —

0.2 g<sup>2</sup>/Hz 50-2000Hz

#### Dielectric Strength —

At Sea Level —

All circuits to ground and circuit to

circuit — 1250 V rms

Coil to ground — 1000 V rms

At 80,000 Feet — 350 V rms

#### Insulation Resistance —

Initial (500 VDC) — 100 MΩ Min.

After Life or Environmental Tests —

50 MΩ Min.

#### Operate Time at Nominal Voltage —

DC Relays — 10 ms or less

AC Relays — 15 ms or less

#### Release Time at Nominal Voltage —

DC Relays — 10 ms or less

AC Relays — 50 ms or less

\* Max. contact opening under vibration or shock 10 microseconds

### Contact Rating — Amperes Ratings Are Continuous Duty

Type of Load	Life (Min.) Cycles x 10 <sup>3</sup>	28 VDC	115VAC 400Hz	115/200VAC 3Ø 400Hz	60Hz*
Resistive	100	10	10	10	2.5
Inductive	20	8	8	8	2.5
Motor	100	4	4	4	2.0
Lamp	100	2	2	2	1

\*60 Hz loads rated for 10,000 operations

**Overload Current** — 40 AMPS DC, 60 AMPS 400Hz

**Rupture Current** — 50 AMPS DC, 80 AMPS 400Hz

**Contact Make Bounce** — 1 MILLISECOND AT NOMINAL VOLTAGE

**Max. Contact Drop at 10 Amps** — INITIAL 0.100 VOLTS

**End of Life** — 0.125 VOLTS

### Coil Data

Coil Code	Nominal Voltages	Freq. Hz	DC Res. AC Amps (B)	Over Temperature Range		
				Pickup or Below Volts	Dropout or Above Volts	Must Hold Voltage (C)
1	6	DC	20 Ω	4.5	0.3	2.5
2	12	DC	80 Ω	9.0	0.75	4.5
3	28	DC	320 Ω	18.0	1.5	7.0
4 (A)	28	DC	320 Ω	18.0	1.5	7.0
5	48	DC	920 Ω	32.0	2.5	14.0
6	28	400Hz	180 mA	22.0	1.25	10.0
7	28	50/400Hz	100 mA	22.0	1.25	10.0
8	115	400 Hz	40 mA	90.0	5.0	40.0
9	115	50/400 Hz	30 mA	95.0	5.0	40.0

A. CODE 4 COILS HAVE BACK EMF SUPPRESSION TO 42 VOLTS MAX.

B. DC COIL RESISTANCE ± 10% AT 25°C; AC COIL MAX. CURRENT AT NOMINAL VOLTAGE.

C. RELAY WILL STAY IN PICKED-UP STATE DOWN TO MUST HOLD VOLTAGES SHOWN.

D. MAX. OVERVOLTAGE: 6 & 12 VDC COILS 120% OF NOMINAL; ALL OTHERS 110% OF NOMINAL.

E. COILS AVAILABLE FOR OTHER VOLTAGES AND FOR AC 50/60HZ.

**NOTE:** Only DC Coil Models are QPL Approved.

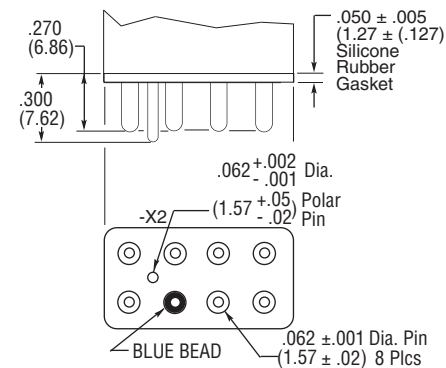
### FCA-210 Series, 10 Amperes, DPDT (Continued)

Below are shown the standard terminal types and the enclosures available. Specify the assembly as indicated under How To Order. Dimensions are shown in inches  $\pm .010$  and (Millimeters  $\pm .25$ ).

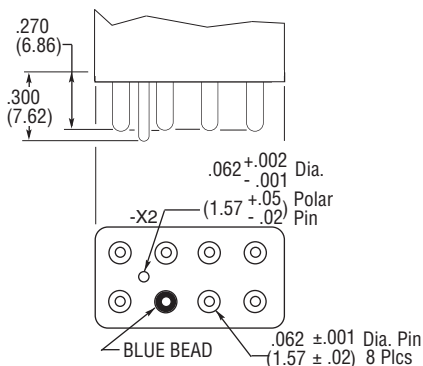
## Terminals

SOCKET PINS ARE GOLD PLATED  
 POLARIZING PINS ARE TIN/LEAD PLATED  
 CIRCUIT BOARD PINS ARE TIN/LEAD PLATED  
 DIMENSIONS EXCEPT AS NOTED:  
 INCHES  $\pm .010$  (MILLIMETERS  $\pm .25$ )

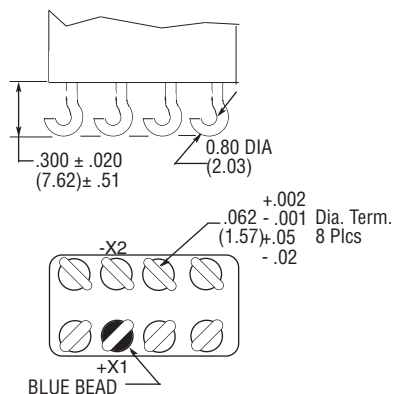
**CODE**  
**"A" Socket Pins - All DC Coils**



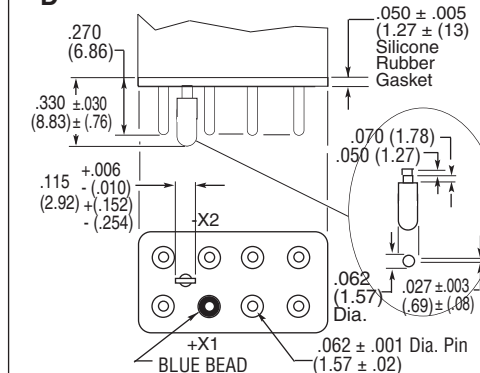
**CODE**  
**“B”**  
**Circuit Board Pins - All DC Coils**



CODE "C"	Solder Hook Terminals
	HOOK TERMINALS TIN/LEAD PLATED

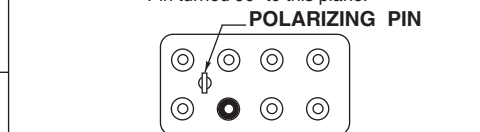
**CODE**      **Socket Pins 115 VAC**

“D”

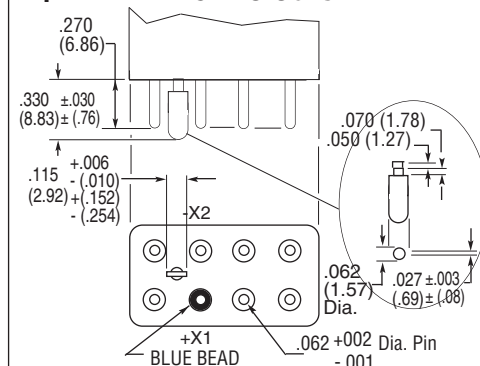


CODE	Socket Pins 28 VAC Coils
------	--------------------------

<b>“E”</b>	Same as Code “D” Except polarizing Pin turned 90° to this plane.
------------	--

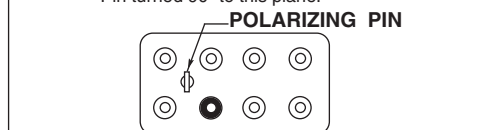


CODE	Circuit Board Pins
"F"	115 VAC Coils

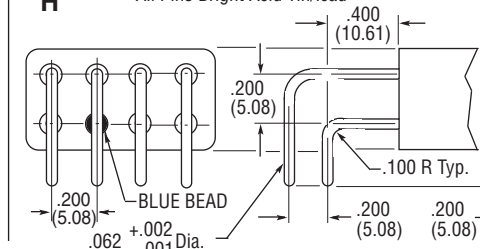


CODE	Circuit Board Pins
"G"	28 VAC Coils

Same as Code "F" Except polarizing  
Pin turned 90° to this plane.



<b>CODE</b>	<b>90° Solder Pins</b>
<b>"H"</b>	All Pins Bright Acid Tin/lead

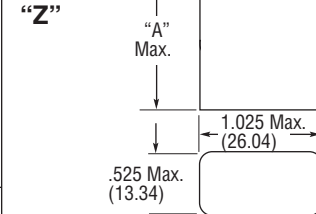
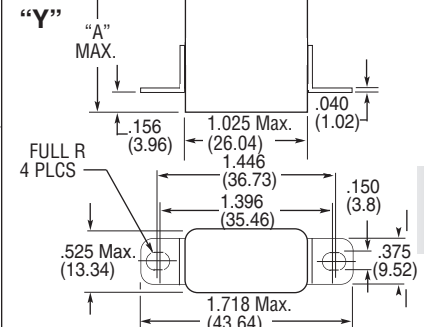
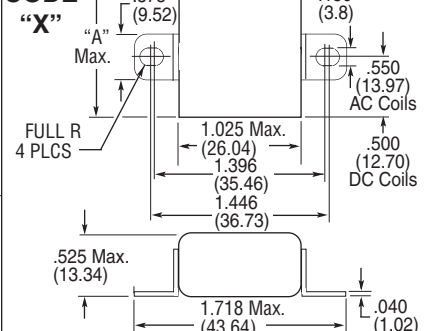
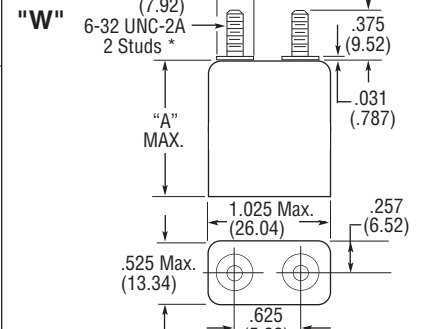


## Enclosures

All Enclosures have Cupro-Nickel  
Cans bright acid tin/lead plated after  
assembly to terminal headers.

Dimensions: Inches  $\pm$  .010 (mm  $\pm$  .25)

**"A"** AC Coils 1.125 in. (28.57) Max.  
DC Coils 1.010 in. (25.65) Max.

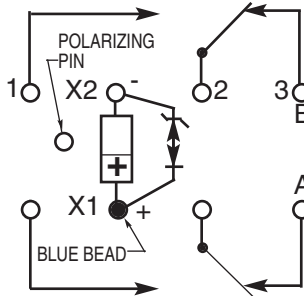
**CODE****CODE****CODE****CODE**

\*Metric threads available. To specify use **[M]** in place of **[W]**

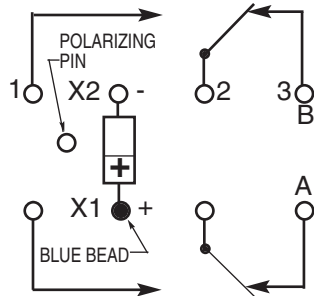
## FCA-210 Series, 10 Amperes, DPDT (Continued)

### Terminal Wiring

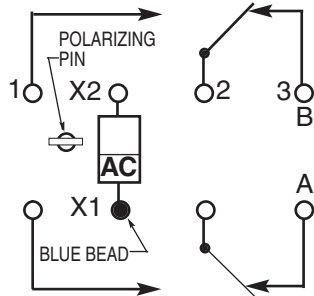
#### DC Coils with Transient Suppression



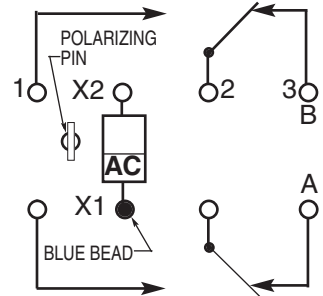
#### DC Coils



#### AC Coils 115 VAC



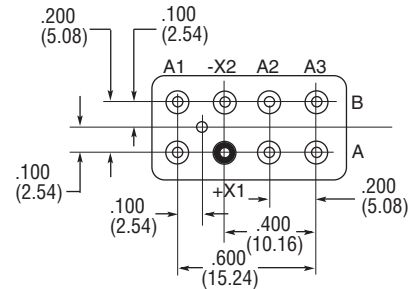
#### AC Coils 28 VAC



**NOTE:** Polarity must be observed with DC coil supply. Relay is polarized with a permanent magnet and will not operate or be damaged by reverse polarity.

Diodes used in transient suppression and in AC rectifier circuits have peak inverse voltage rating of 600 VDC minimum. Zener diodes have a minimum rating of 1 watt.

Terminal designations are for reference only and do not appear on the header.



TERMINAL VIEW

### HOW TO ORDER

**RELAY TYPE** \_\_\_\_\_

**TERMINALS** (Socket Pins, DC Coil) \_\_\_\_\_

**ENCLOSURE** (With Flanges) \_\_\_\_\_

**COIL** (28 VDC With Transient Suppression). \_\_\_\_\_

**FCA-215-  
FCA-210-A Y 4**

**NOTE: Only DC coil models are QPL Approved**

\* The part number example shown on this page is for catalog items. For a list of specific QPL part numbers, please see the index in Section 15.

# Mouser Electronics

Authorized Distributor

Click to View Pricing, Inventory, Delivery & Lifecycle Information:

## TE Connectivity:

[FCA-210-451](#) [FCA-210-CX3](#) [FCA-210-DY9](#) [FCA-210-1024M](#) [FCA-210-1026M](#) [FCA-210-BZ2](#) [FCA-210-FZ9](#) [FCA-210-0919L](#) [FCA-210-0922L](#) [FCA-210-1038L](#) [FCA-210-0933M](#) [FCA-210-1034M](#) [FCA-210-1035L](#) [FCA-210-1035M](#) [FCA-210-1036L](#) [FCA-210-1036M](#) [FCA-210-1037L](#) [FCA-210-1031M](#) [FCA-210-1032L](#) [FCA-210-1032M](#) [FCA-210-1033L](#) [FCA-210-1033M](#) [FCA-210-1034L](#) [FCA-210-1028M](#) [FCA-210-1029L](#) [FCA-210-1029M](#) [FCA-210-1030L](#) [FCA-210-1030M](#) [FCA-210-1031L](#) [FCA-210-1018L](#) [FCA-210-1018M](#) [FCA-210-1020L](#) [FCA-210-1021L](#) [FCA-210-1025L](#) [FCA-210-1027L](#) [FCA-210-1013M](#) [FCA-210-1014L](#) [FCA-210-1014M](#) [FCA-210-1016L](#) [FCA-210-1016M](#) [FCA-210-1017M](#) [FCA-210-1010M](#) [FCA-210-1011L](#) [FCA-210-1011M](#) [FCA-210-1012L](#) [FCA-210-1012M](#) [FCA-210-1013L](#) [FCA-210-1007L](#) [FCA-210-1007M](#) [FCA-210-1008L](#) [FCA-210-1009L](#) [FCA-210-1009M](#) [FCA-210-1010L](#) [FCA-210-1003L](#) [FCA-210-1003M](#) [FCA-210-1004M](#) [FCA-210-1005L](#) [FCA-210-1006L](#) [FCA-210-1006M](#) [FCA-210-0932M](#) [FCA-210-0933L](#) [FCA-210-1001L](#) [FCA-210-1001M](#) [FCA-210-1002L](#) [FCA-210-1002M](#) [FCA-210-0928M](#) [FCA-210-0930L](#) [FCA-210-0930M](#) [FCA-210-0931L](#) [FCA-210-0931M](#) [FCA-210-0932L](#) [FCA-210-0901M](#) [FCA-210-0922M](#) [FCA-210-0924M](#) [FCA-210-0925L](#) [FCA-210-0926L](#) [FCA-210-0927L](#) [FCA-210-0920L](#) [FCA-210-0920M](#) [FCA-210-0921L](#) [FCA-210-0921M](#) [FCA-210-0902M](#) [FCA-210-0901L](#) [FCA-210-0915M](#) [FCA-210-0916L](#) [FCA-210-0916M](#) [FCA-210-0918L](#) [FCA-210-0918M](#) [FCA-210-0919M](#) [FCA-210-0912L](#) [FCA-210-0912M](#) [FCA-210-0913L](#) [FCA-210-0913M](#) [FCA-210-0914L](#) [FCA-210-0915L](#) [FCA-210-0909L](#) [FCA-210-0909M](#) [FCA-210-0910L](#) [FCA-210-0910M](#) [FCA-210-0911L](#)