

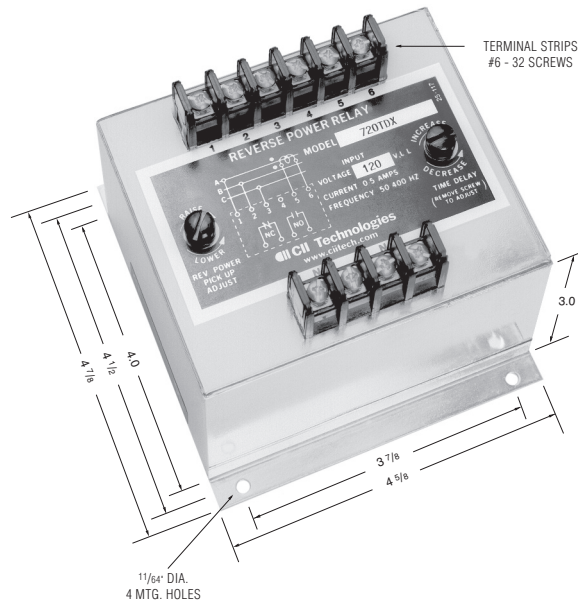
## 700 Series w/ Adjustable Time Delay

### Product Facts

- Function 32
- ANSI/IEEE C37.90-1978
- UL File No. E58048
- CSA File No. LR61158

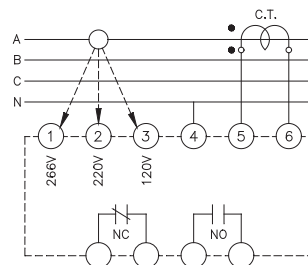


Several types of Reverse Power Relays are available including relays sensitive to reverse reactive power (kVAR). KILOVAC is the leading brand of reverse power relays. Our rugged sealed construction provides continuous and reliable operation unaffected by shock, vibration or other severe environments. Reverse Power Relays are used for the protection of generator sets operating in parallel.



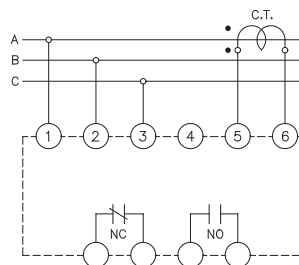
**Note:** Dimensions in inches. Multiply values by 25.4 for dimensions in mm.

**Model 710TD**



**Designed for 120, 220 or 266 volt line to neutral connection**

**Model 720TD (X) thru 724TD (X)**



**For operation on three phase, three wire**

### Product Specifications

#### Line Voltage —

Model 710TD — 120 V, 220 V or 266 V, line to neutral

Model 730TD — 120 V, 230 V, 380 V, 460 V, L-L, 3 Phase or 120 V, Single Phase, L-N

All models for three phase, three wire sensing are available, see Ordering Information

**Line Frequency** — 50-500 Hz.

#### Current Requirements —

0 to 5 amp max direct or from CT with 5 amp secondary

#### Trip Adjustment —

Screwdriver adjustable 4% to 20% (of the 5 amp rating)

**Time Delay Adjustment** — 0.5 to 20 seconds, screwdriver adjustable

**Output Contacts** — One set N.O., one set N.C.

**Contact Ratings** — 5 amp resistive at 120 AC or 28 Vdc

#### Power Consumption —

Voltage circuit — 2 VA max.

Current circuit — 4 VA max.

**Weight** — 2.75 lbs. max.

#### Notes:

1. Remove screw for access to the pick-up and time delay adjustments.
2. Clockwise rotation of the pick-up adjustment will raise the reverse trip point.
3. Clockwise rotation of the time adjustment will increase the time delay.
4. Polarity of the voltage and the current connections must be observed for true power sensing.
5. Interchanging connections on terminals 5 and 6, will cause the output contacts to pick-up on forward power and dropout on no power or reverse power.

### Ordering Information

#### Sample Part Number ►

**720TDX**

#### Type:

- 710TD = 120V, 220V, 266V line to neutral
- 720TD = 120V, L-L, 3 Phase
- 721TD = 230V, L-L, 3 Phase
- 722TD = 380V, L-L, 3 Phase
- 723TD = 460V, L-L, 3 Phase
- 724TD = 575V, L-L, 3 Phase
- 725TD = 416V, L-L, 3 Phase
- 730TD = 120 V, 230 V, 380 V, 460 V, L-L, 3 Phase or 120 V, Single Phase, L-N

#### Mounting:

- X = Flange
- Blank = Stud

#### Options:

- 7 = Reverse Inductive, 60 Hz

**Consult factory for additional models.**

# Mouser Electronics

Authorized Distributor

Click to View Pricing, Inventory, Delivery & Lifecycle Information:

[TE Connectivity:](#)

[710TDX](#) [720TD-4SX](#) [721TDX](#) [723TD-7X](#) [731TDX](#) [723TDX](#) [730TDX](#)