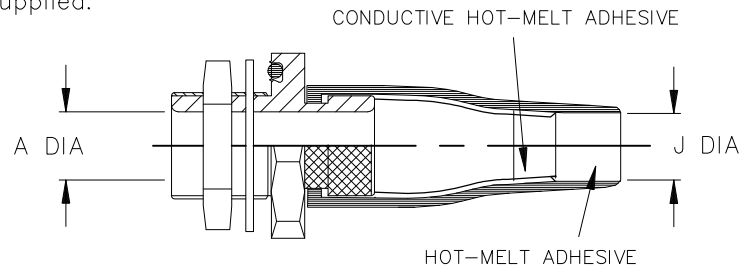


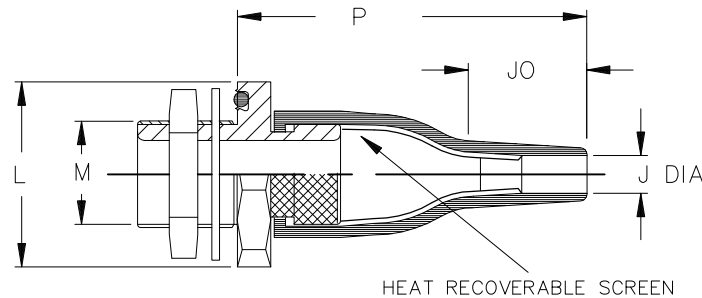
REVISIONS

P	LTR	DESCRIPTION	DATE	DWN	APVD
	6	RELEASED AS PER ECO-17-009529	03JUL2017	PV	MP

a) Part as supplied.



b) Part after unrestricted recovery.



NOTES:

TCFS-XX-XXX-OXX-100CH

- Thread Length (20mm standard) (± 5 mm increments)
- Feedthrough Material/Finish
 - 19B Aluminium alloy plated cadmium olive drab over electroless nickel
 - 19C Aluminium alloy plated electroless nickel
 - 62C Stainless steel plated electroless nickel
- Feedthrough Size

Moulded Part Material: -100C (Black); Polyolefin/Silver Composites, Semi-flexible
ZEROHAL™ Low fire hazard

Kits to include cleaning tissue, 1 piece 100 grit emery cloth & 1 piece of atom.
Kit to be used in conjunction with TCFS installation procedure.

Dimensions in mm [inches for reference]

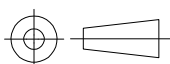
Part No.	A MIN	J		M THREAD	A/F NUT	L NOM	P $\pm 10\%$ b	JO REF b
		MIN a	MAX b					
TCFS-12	7.4 [.29]	7.0 [.28]	5.0 [.20]	M12 X 1.5	17 [.67]	24 [.94]	50 [1.97]	15 [.59]
TCFS-16	10.1 [.40]	9.0 [.35]	6.0 [.24]	M16 X 1.5	22 [.87]	29 [1.14]	65 [2.56]	17 [.67]
TCFS-20	14.1 [.56]	11.0 [.43]	7.2 [.28]	M20 X 1.5	27 [1.06]	34 [1.34]	77 [3.03]	20 [.79]
TCFS-24	19.1 [.75]	17.0 [.67]	8.5 [.33]	M24 X 1.5	30 [1.18]	38 [1.50]	90 [3.54]	25 [.98]
TCFS-30	24.1 [.95]	21.0 [.83]	10.0 [.39]	M30 X 1.5	36 [1.42]	47 [1.85]	115 [4.53]	30 [1.18]
TCFS-36	30.1 [1.19]	29.0 [1.14]	15.8 [.62]	M36 X 1.5	41 [1.61]	52 [2.05]	140 [5.51]	30 [1.18]

DIMENSIONS:

mm [INCHES]

TOLERANCES UNLESS
OTHERWISE SPECIFIED:

0 PLC	\pm -
1 PLC	\pm -
2 PLC	\pm -
3 PLC	\pm -
4 PLC	\pm -
ANGLES	\pm -



DWN P. VU 17OCT2016

CHK N. NAGAR 17OCT2016

APVD M. POPE 17OCT2016

PRODUCT SPEC

APPLICATION SPEC

WEIGHT

MATERIAL

SEE NOTES

FINISH

SEE NOTES



TE Connectivity

NAME

ADAPTOR ASSEMBLY

SIZE

CAGE CODE

DRAWING NO

RESTRICTED TO

A4

00779



TCFS-XX-XXX-OXX-100CH

CUSTOMER DRAWING

SCALE

DNS

SHEET

1 OF 1

REV 6

Mouser Electronics

Authorized Distributor

Click to View Pricing, Inventory, Delivery & Lifecycle Information:

[TE Connectivity:](#)

[TCFS-12-62C-020-100CH](#)