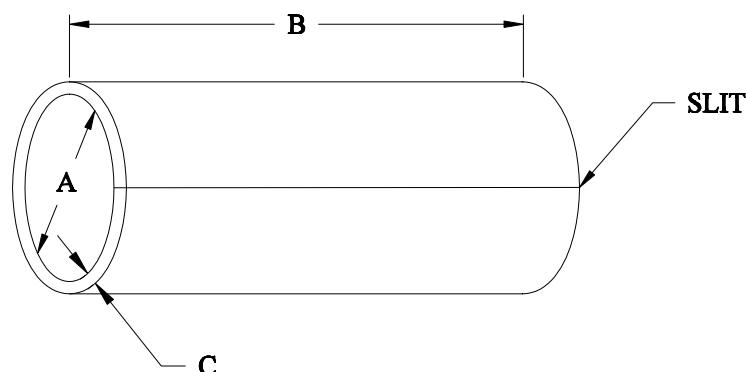


**Slit Adhesive Sleeve  
(S-1048)****Table 1: Dimensions** (inches)

Size	Extruded ID (A)	Cut Length (B)	Extruded Wall (C)
SAS-090-1.00-1048	.090 ± .005	1.000 ± .050	0.024 ± .005
SAS-115-1.00-1048	.115 ± .005	1.000 ± .050	0.032 ± .005
SAS-160-1.00-1048	.160 ± .005	1.000 ± .050	0.032 ± .005
SAS-200-1.00-1048	.200 ± .005	1.000 ± .050	0.035 ± .005
SAS-250-1.00-1048	.250 ± .010	1.000 ± .050	0.035 ± .005
SAS-300-1.00-1048	.300 ± .010	1.000 ± .050	0.067 ± .010

**Color:** Amber**Requirements:** The Silt Adhesive Sleeves shall meet all the requirements of Raychem Specification RT-1051.

Raychem reserves the right to amend this specification at any time. Users should evaluate the suitability of the product for their application.

# Mouser Electronics

Authorized Distributor

Click to View Pricing, Inventory, Delivery & Lifecycle Information:

[TE Connectivity:](#)

[SAS-090-1-1048-1X](#)