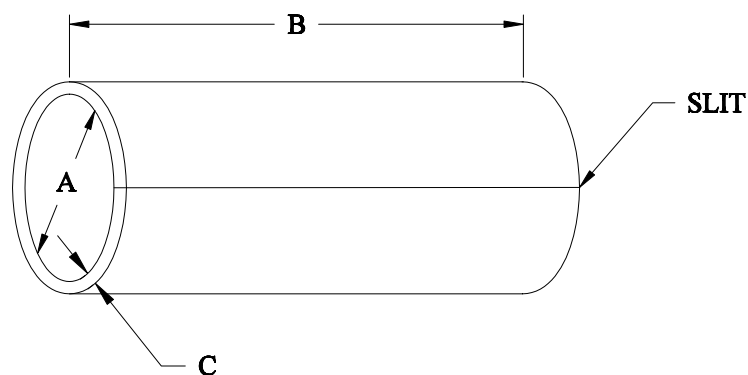


**Slit Adhesive Sleeve
(S-1048)****Table 1: Dimensions** (inches)

Size	Extruded ID (A)	Cut Length (B)	Extruded Wall (C)
SAS-090-1.00-1048	.090 ± .005	1.000 ± .050	0.024 ± .005
SAS-115-1.00-1048	.115 ± .005	1.000 ± .050	0.032 ± .005
SAS-160-1.00-1048	.160 ± .005	1.000 ± .050	0.032 ± .005
SAS-200-1.00-1048	.200 ± .005	1.000 ± .050	0.035 ± .005
SAS-250-1.00-1048	.250 ± .010	1.000 ± .050	0.035 ± .005
SAS-300-1.00-1048	.300 ± .010	1.000 ± .050	0.067 ± .010

Color: Amber**Requirements:** The Silt Adhesive Sleeves shall meet all the requirements of Raychem Specification RT-1051.

Raychem reserves the right to amend this specification at any time. Users should evaluate the suitability of the product for their application.

Mouser Electronics

Authorized Distributor

Click to View Pricing, Inventory, Delivery & Lifecycle Information:

[TE Connectivity:](#)

[SAS-200-1-1048-1X-CS7329](#)