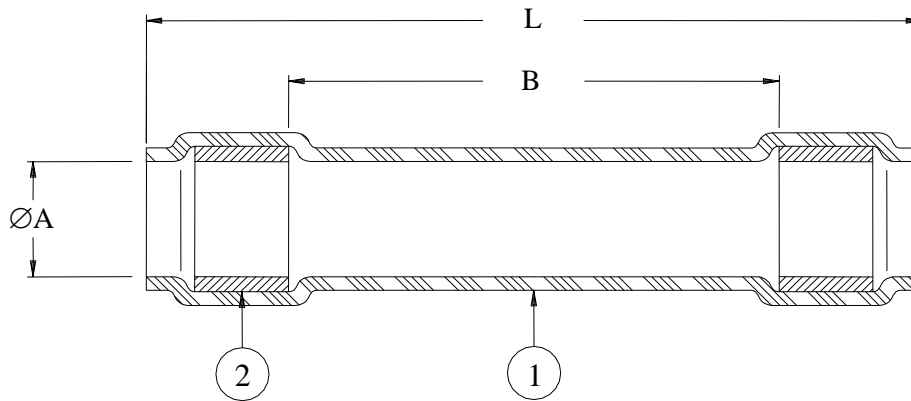


## CUSTOMER DRAWING




Part Description	Product Dimensions		
	L Max	B Ref	ØA Min
RT-555-3/8-2.75-A260-0	69.9 (2.75)	25.4 (1.00)	8.9 (0.35)
RT-555-3/8-4.75-A260-0	120.7 (4.75)	76.2 (3.00)	8.9 (0.35)
RT-555-1/2-2.75-A260-0	69.9 (2.75)	25.4 (1.00)	12.7 (0.50)
RT-555-1/2-5.75-A260-0	146.1 (5.75)	101.6 (4.00)	12.7 (0.50)
RT-555-3/4-3.00-A260-0	76.2 (3.00)	31.8 (1.25)	18.3 (0.72)
RT-555-3/4-4.75-A260-0	120.6 (4.75)	76.2 (3.00)	18.3 (0.72)
RT-555-3/4-6.75-A260-0	171.5 (6.75)	127.0 (5.00)	18.3 (0.72)
RT-555-1.0-3.75-A260-0	95.3 (3.75)	50.8 (2.00)	22.8 (0.90)
RT-555-1.0-4.75-A260-0	120.6 (4.75)	76.2 (3.00)	22.8 (0.90)
RT-555-1.0-6.75-A260-0	171.5 (6.75)	127.0 (5.00)	22.8 (0.90)

### **MATERIALS**

1. INSULATION SLEEVE: Heat-shrinkable, radiation cross-linked modified fluoropolymer. Color: Black.
2. MELTABLE INSERT: Environment resistant modified thermoplastic fluoroelastomer. Color: Light Blue

### **APPLICATION**

1. This part is designed to provide an immersion resistant seal on wires having insulation diameters as specified on table and temperature rating of at least +150°C (302°F).
2. Temperature range: -65°C to +200°C (-85°F to +392°F).  
Maximum temperature of 260°C (500°F) when exposed for 500 continuous hours.

 TE Connectivity	TITLE: <b>SEALING SLEEVE</b>		
Unless otherwise specified dimensions are in millimeters. [Inches dimensions are shown in brackets] DIMENSIONING AND TOLERANCING PER ASME Y14.5-2009		Raychem Molded Parts	
TOLERANCES: 0.00 N/A 0.0 N/A 0 N/A		DOCUMENT NO.:  <b>RT-555-X/X-YYY-A260-0</b>	
ANGLES: N/A  ROUGHNESS IN MICRON	Tyco Electronics reserves the right to amend this drawing at any time. Users should evaluate the suitability of the product for their application.		REV: E  DATE: August 3, 2012
PREPARED BY: <b>RODRIGUEZ</b>	CAGE CODE: 06090	ECO NUMBER: ECO-12-014108	SCALE: NTS  SIZE: A  SHEET: 1 of 1

# Mouser Electronics

Authorized Distributor

Click to View Pricing, Inventory, Delivery & Lifecycle Information:

[TE Connectivity:](#)

[RT555-3/4-6.75-A2600](#)