

NOTES:

1. PART NUMBER VARIABLE:

MTC100-JXX-X11

P = PIN
S = SOCKET

1 = 1 INCH
2 = 2 INCH

A = "A" INSERT
B = "B" INSERT

2. MATERIAL:

- A) PIN/SOCKET INSERT
B) PIN CONTACT
C) SOCKET CONTACT
D) INTERFACIAL SEAL

HIGH GRADE POLYARYLENE THERMOPLASTIC.
COPPER ALLOY PER QQ-B-613 OR QQ-C-502.
COPPER ALLOY PER QQ-B-750.
SILICONE ELASTOMER PER ZZ-R-765.

3. FINISH:

- A) PIN/SOCKET INSERT
B) PIN/SOCKET CONTACT
C) CONTACT TAIL

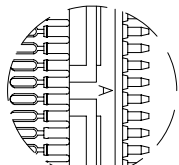
AS MOLDED.
GOLD PLATE PER MIL-G-45204, CLASS 1.
SOLDER COATED PER QQ-S-571 (Sn63),

If this document is printed it becomes uncontrolled.
Check for the latest revision.

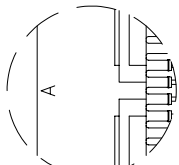
4. NUMBER ONE POSITION IS MARKED AS SHOWN IN CONTRASTING COLOR ON INTERFACE.

5. THIS INSERT MEETS THE REQUIREMENTS OF RAYCHEM SPECIFICATION C-6111.

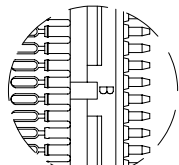
SIZE		WEIGHT MAXIMUM		DIM. "Z"
		LBS.	GRAMS	
1 INCH INSERT	PIN	.0038	1.724	1.05 [26,7]
	SOC.	.0044	1.996	
2 INCH INSERT	PIN	.0074	3.356	2.05 [52,1]
	SOC.	.0089	4.037	



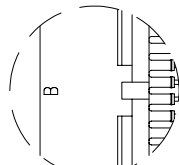
PIN



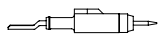
SOCKET



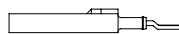
PIN



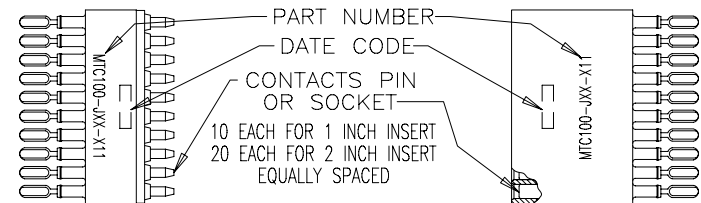
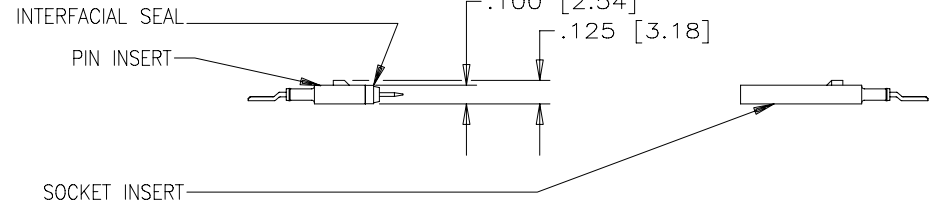
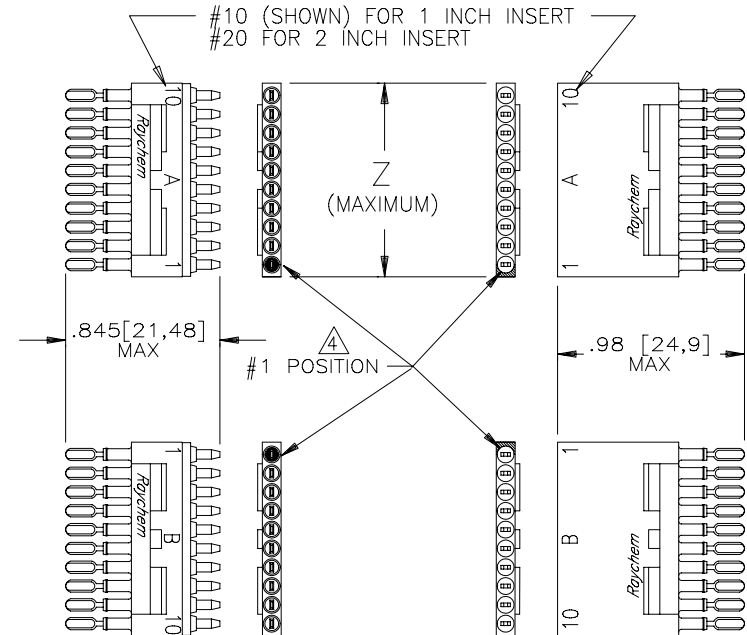
SOCKET



AUXILLARY VIEW OF 2 INCH INSERT
KEYS/KEYWAYS



REVISIONS			
LTR	DESCRIPTION	DATE	APPROVED
N/C	INITIAL RELEASE PER ECN T-		



SPECIFICATION CONTROL DRAWING © Raychem Corporation 1990

UNLESS OTHERWISE SPECIFIED DIMENSIONS ARE IN INCHES. METRIC DIMENSIONS ARE IN BRACKETS. DECIMALS .XXX ± .005 .XX ± ANGLES .X ± WEIGHT: MAXIMUM SEE TABULATION	DRAWN		CERDAN	900110	Raychem				RAYCHEM CORPORATION 300 CONSTITUTION DRIVE MENLO PARK, CALIFORNIA 94025	
	CHECKED				TITLE INSERT 20-26 AWG ROUND WIRE 125°C OPERATING TEMPERATURE MTC100 SERIES					
	APPROVED		J.BLAIR	88APR18						
	APPROVED		J.CAMERON	88APR21						
	CAD NAME		005250-1			SIZE	CODE IDENT. NO.	DWG. NO.	REV	
					C	06090	MTC100-JXX-X11	N/C		
					DO NOT SCALE THIS DRAWING			SHEET 1 OF 1		

SHEET 1
MTC100-JXX-X11
DWG NO.

Mouser Electronics

Authorized Distributor

Click to View Pricing, Inventory, Delivery & Lifecycle Information:

[TE Connectivity:](#)

[MTC100-JA2-S11](#)