

1. PART NUMBER VARIABLE:

MTC100-EXX-X12

CTM FOR .100 FCC/FLEXPRINT

Sn 63

- P= PIN

- S= SOCKET

- 1= 1 INCH

- 2= 2 INCH

A- "A" INSERT

```
- A=      A  INSERT
- R=    "R"  INSERT
```

B= B INSERT

ENHANCED STANDARD
MTC CONNECTOR SERIES 100 MIL

2. MATERIAL:

- | | | |
|----|-----------------------|---|
| A) | PIN/SOCKET INSERT | HIGH GRADE POLYARYLENE THERMOPLASTIC. |
| B) | PIN CONTACT | COPPER ALLOY PER ASTM B36, ASTM B36M |
| C) | SOCKET CONTACT | COPPER ALLOY PER ASTM B103, ASTM B103M (A). |
| D) | CABLE AND INSERT SEAL | MODIFIED THERMOPLASTIC HOT MELT SEALANT. |
| E) | INTERFACIAL SEAL | FLUOROSILICONE PER MIL-R-25988. |
| F) | TERMINATION MODULE | TRANSPARENT BLUE HEAT SHRINKABLE, RADIATION |

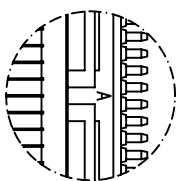
3. FINISH:

- | | |
|-----------------------|---|
| A) PIN/SOCKET INSERT | AS MOLDED. |
| B) PIN/SOCKET CONTACT | GOLD PLATE PER ASTM B488, CLASS 1,TYPE 2, GRADE C. |
| C) CONTACT TAIL | SOLDER COATED PER IPC J-STD 006 (Sn63),
FLUX COATED PER IPC J-STD 006. TYPE RMA. |

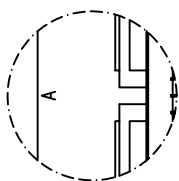
4 NUMBER ONE POSITION IS MARKED AS SHOWN IN CONTRASTING COLOR ON INTERFACE.

5. THESE INSERTS MEET THE REQUIREMENTS OF RAYCHEM SPECIFICATION C-6111.

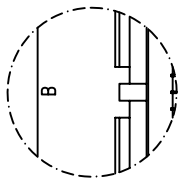
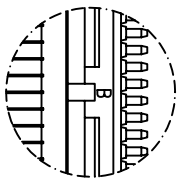
TABULATION					
SIZE		WEIGHT MAXIMUM		DIM. "Y"	DIM. "Z"
		LBS.	GRAMS		
1 INCH INSERT	PIN	.0053	2.404	1.15	1.05
	SOC.	.0060	2.722	[29.2]	[26.7]
2 INCH INSERT	PIN	.0103	4.7	2.15	2.05
	SOC.	.0119	5.398	[54.6]	[52.1]



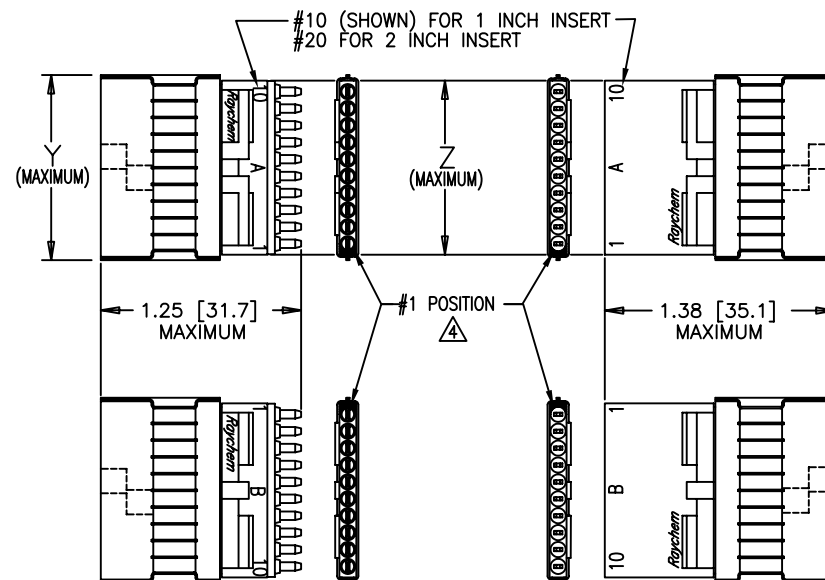
PIN



SOCKET



AUXILLARY VIEW
OF 2 INCH INSERT
KEYS/KEYWAYS



PIN INSERT

INTERFACIAL SEAL

SOCKET INSERT

TERMINATION MODULE:
COMMON TO PIN AND
SOCKET ASSEMBLIES
(INCLUDES CABLE
AND INSERT SEALS)

— PART NUMBER
DATE CODE

CONTACTS PIN
OR SOCKET

EACH FOR 1 INCH INSERT
EACH FOR 2 INCH INSERT
EQUALLY SPACED



1

100

If this document is printed it becomes uncontrolled. Check for the latest revision

©2010 Tyco Electronics Corporation. All rights reserved.

CUSTOMER DRAWING

UNLESS OTHERWISE SPECIFIED DIMENSIONS ARE IN INCHES. METRIC DIMENSIONS ARE IN BRACKETS. DECIMALS .XXX ± .005 .XX ± ANGLES .X ± WEIGHT: MAXIMUM SEE TABULATION	DRAWN	LUTTICKEN	87SEPT15	 Tyco Electronics Raychem Interconnect 300 Constitution Drive Menlo Park, CA 94025 U.S.A.
	CHECKED	J.B.		
	APPROVED	J.BLAIR	87OCT02	
	APPROVED			
	CAD NAME	MTC100-EXX-X12		TITLE ASSEMBLY, INSERT, FLAT CABLE TERMINATION, TEMPERATURE RATING 125 CELSIUS DEGREE MTC 100 SERIES
	THIRD ANGLE PROJECTION			
	SIZE	CAGE CODE:	DWG. NO.	REV
	A	06090	MTC100-EXX-X12	E
SCALE: NONE			SHEET 1 OF 1	

Mouser Electronics

Authorized Distributor

Click to View Pricing, Inventory, Delivery & Lifecycle Information:

[TE Connectivity:](#)

[MTC100-EA2-S12](#)