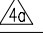
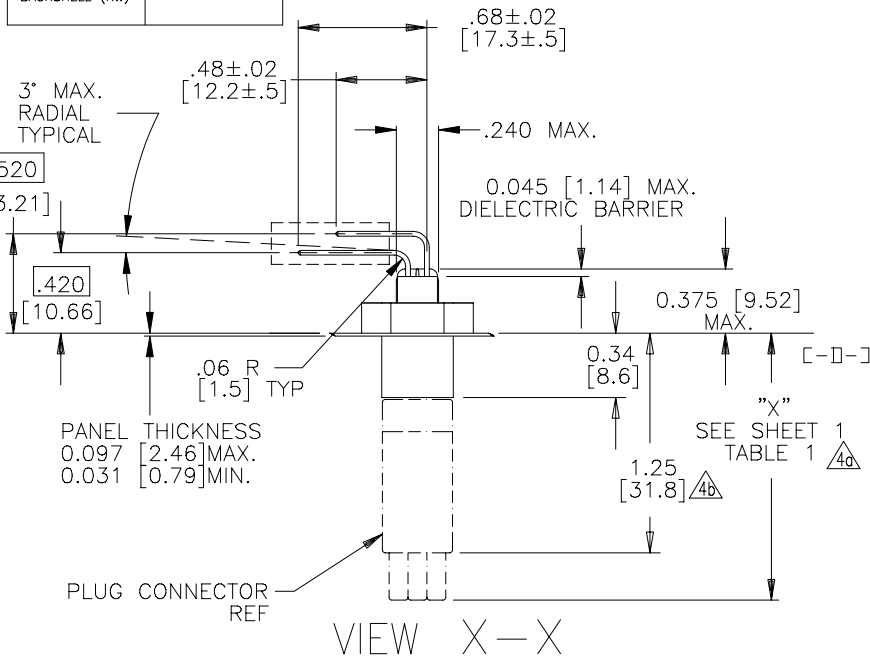


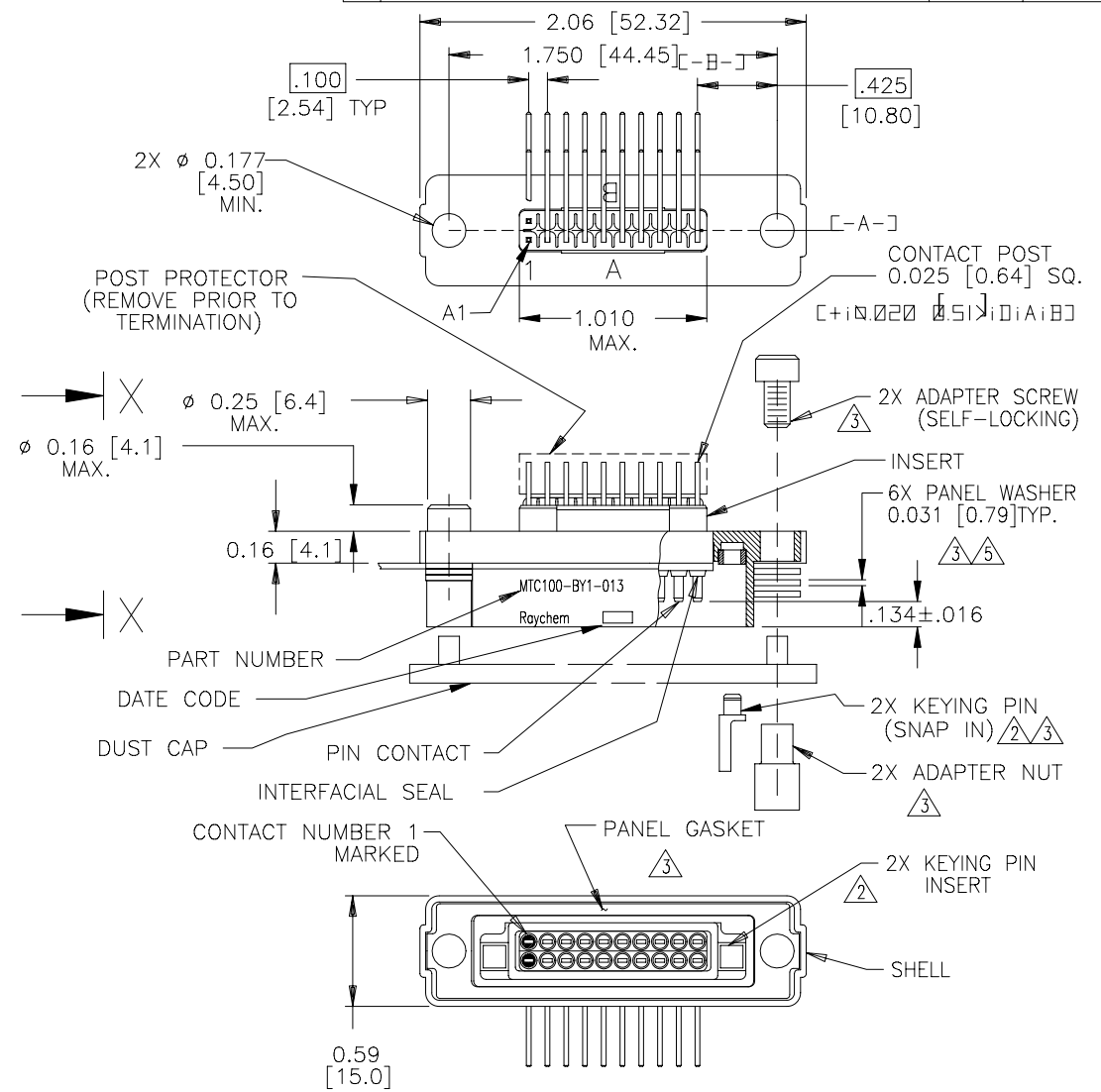
NOTES:

1. A BOX MOUNT RECEPTACLE MATES WITH A MTC PLUG CONTAINING SOCKET INSERTS. REFER TO APPLICABLE RAYCHEM SPECIFICATION CONTROL DRAWING FOR DETAILS.
2. FOR KEYING INFORMATION, SEE RAYCHEM DRAWING D-659-0080.
3. THESE ITEMS ARE SUPPLIED UNASSEMBLED.
4. DIMENSION SHOWN IS WITH MATED PLUG CONNECTOR:
 - a. WITH CABLE CLAMP
 - b. WITHOUT CABLE CLAMP AND WITHOUT EARS
5. THIS BOX MOUNT RECEPTACLE IS REAR PANEL MOUNTED BY REMOVING AS MANY PANEL WASHERS AS REQUIRED TO ACCOMMODATE THE THICKNESS OF THE PANEL BEING USED. SEE SHEET 2, TABLE 2.
6. SEE SHEET 2, TABLE 3, FOR WEIGHTS. WEIGHTS SHOWN ARE WITHOUT DUST CAP AND WITHOUT POST PROTECTOR.
7. CONNECTOR SHELL MUST BE RIGIDLY ANCHORED TO THE PRINTED CIRCUIT BOARD IN A MANNER THAT PRECLUDES FLEXING OF THE TERMINATION POSTS AT THE POINT OF BEND.

TABLE 1 	
DIMENSION "X"	
DESCRIPTION	MAX. LENGTH
STANDARD PLUG	1.50 [38.1]
PLUG WITH EME BACKSHELL (FCC)	2.04 [51.8]
PLUG WITH EME BACKSHELL (RW)	2.93 [74.4]



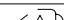

REVISIONS			
LTR	DESCRIPTION	DATE	APPROVED
B	REVISED PER ECN T-19857		



If this document is printed it becomes uncontrolled.
Check with the web for latest revision.

SPECIFICATION CONTROL DRAWING

© Raychem Corporation 1994

UNLESS OTHERWISE SPECIFIED DIMENSIONS ARE IN INCHES. METRIC DIMENSIONS ARE IN BRACKETS. DECIMALS .XXX ± .005 .XX ± .01 ANGLES .X ± WEIGHT	DRAWN		8/22/94	Raychem RAYCHEM CORPORATION 300 CONSTITUTION DRIVE MENLO PARK, CALIFORNIA 94025				
	CHECKED	R. H.	8/22/94	TITLE	CONNECTOR, RECEPTACLE, FLANGED, PIN, BOXMOUNT, 1 - INCH, .025 SQ. POST, RIGHT ANGLE, MTC100 SERIES (16VE049006-4)			
	APPROVED	R.HAGMANN	8/22/94					
	APPROVED							
	CAD NAME	008111-1.DWG						
THIRD ANGLE PROJECTION			SIZE A	CODE IDENT. NO. 06090	DWG. NO. MTC100-BY1-013	REV B		
			DO NOT SCALE THIS DRAWING		SHEET 1 OF 2			

SHEET 1
MTC100-BY1-013

SPECIFICATIONS:

MATERIALS:

A. SHELL	ALUMINUM ALLOY PER QQ-A-591
B. ADAPTER SCREW	STAINLESS STEEL PER QQ-S-763, 300 SERIES
C. ADAPTER NUT	STAINLESS STEEL PER QQ-S-763, 300 SERIES
D. STANDARD PANEL GASKET	SILICONE ELASTOMER PER MIL-R-25988
E. INSERT	HIGH GRADE POLYARYLENE THERMOPLASTIC
F. INTERFACIAL SEAL	SILICONE ELASTOMER PER MIL-R-25988
G. KEYING PIN	HIGH GRADE POLYARYLENE THERMOPLASTIC
H. PIN CONTACT	COPPER ALLOY PER QQ-B-750
I. PANEL WASHER	STAINLESS STEEL PER QQ-S-763, 300 SERIES
J. KEYING PIN INSERT	HIGH GRADE POLYARYLENE THERMOPLASTIC

FINISH:

APPLIES TO CADMIUM
PLATED CONNECTORS

A. SHELL	CADMIUM PLATED PER QQ-P-416 OVER NICKEL UNDERPLATE
B. ADAPTER SCREW	CADMIUM PLATED PER QQ-P-416
C. ADAPTER NUT	CADMIUM PLATED PER QQ-P-416
D. PANEL WASHER	CADMIUM PLATED PER QQ-P-416
E. PIN CONTACT	ENGAGING END - GOLD PLATED PER MIL-G-45204 TYPE 1, GRADE C, CLASS 1 TERMINATION POST - TINNED WITH Sn63 SOLDER PER QQ-S-571

DESIGN AND CONSTRUCTION:

THE CONNECTORS SPECIFIED HEREIN ARE PANEL MOUNTED RECEPTACLES WITH FIXED (NON REMOVABLE) PIN INSERTS AND CONTACTS. THE CONNECTOR IS WITHOUT PROVISIONS FOR CABLE CLAMPS OR TERMINATION SEALS.

PERFORMANCE:

THE APPLICABLE RAYCHEM SPECIFICATION FOR THIS PART IS C6111.
THIS PART IS NOT QUALIFIED TO C6111.

HUMIDITY
ALTITUDE IMMERSION
ALTITUDE-LOW TEMPERATURE
FLUID IMMERSION

THE CONNECTOR TERMINATION END MUST BE SUITABLY PROTECTED
FOR TESTING OR APPLICATION IN ANY OF THESE ENVIRONMENTS.

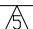
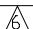
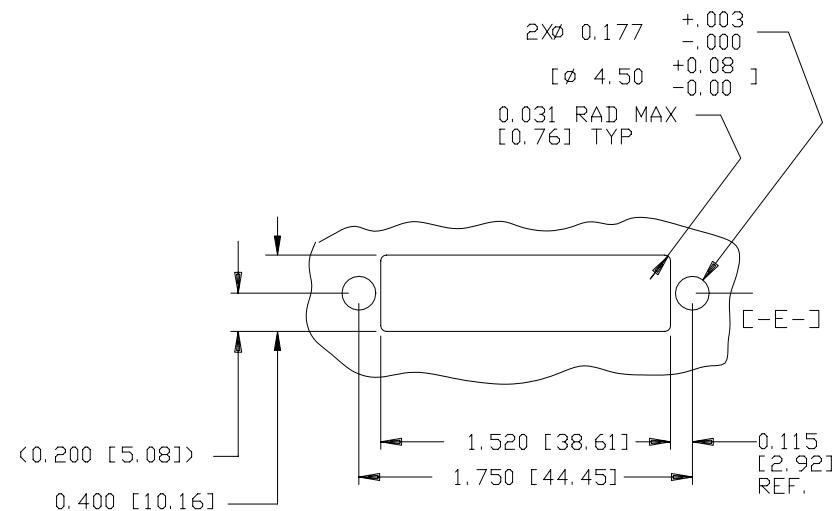
TABLE 2 	
PANEL THICKNESS	NUMBER OF PANEL WASHERS FOR EACH FASTENER
0.031/0.036 [0.81/[0.9]	2
0.062/0.067 [1.51/[1.7]	1
0.093/0.097 [2.31/[2.4]	0

TABLE 3 	
WEIGHT (lbs.[gr.] MAX.	
CONNECTOR SIZE	FLANGED
1 INCH	0.044 [19.96]



If this document is printed it becomes uncontrolled.
Check with the web for latest revision.

DRAWN	DATE	SIZE	CODE IDENT. NO.	DWG. NO.	REV
ISSUED	DATE	A	06090	MTC100-BY1-013	B
DO NOT SCALE THIS DRAWING		CAB NAME 008111-2.DWG		SHEET 2 OF 2	

Mouser Electronics

Authorized Distributor

Click to View Pricing, Inventory, Delivery & Lifecycle Information:

[TE Connectivity:](#)

[MTC100-BY1-013CS015](#)