

SAFETY ORGANIZATIONS

THIS FILTER HAS BEEN FORMALLY RECOGNIZED, CERTIFIED OR APPROVED BY THE LISTED AGENCY. THEREFORE, ALL TEST/REQUIREMENTS SPECIFIED IN THE LATEST REVISION OF THE FOLLOWING AGENCY STANDARDS HAVE BEEN MET:

OPERATING SPECIFICATIONS

LINE CURRENT/VOLTAGE: 3 AMP, 60VDC

OPERATING AMBIENT TEMP. RANGE: -10°C TO +60°C @ RATED CURRENT, I_r .

IN AN AMBIENT, T_a , HIGHER THAN 60°C, THE MAXIMUM OPERATING CURRENT, I_o , IS AS FOLLOWS:

$$I_o = I_r \sqrt{\frac{65 - T_a}{25}}$$

RELIABILITY SPECIFICATIONS:

STORAGE TEMPERATURE: -40°C TO +85°C
HUMIDITY: 21 DAYS @ 40°C 95% RH.
CURRENT OVERLOAD TEST: 6 TIMES I_r FOR 8 SECONDS

TEST SPECIFICATIONS:

INDUCTANCE: 34.32 mH NOMINAL
CAPACITANCE: (MEASURED @ 1KHz, 0.250VAC MAX., 25°C±1°C)
LINE TO GROUND: 9 μ F±20%
LINE TO LINE: 3282.3 μ F±20%
DISCHARGE RESISTOR: 10K Ω
L/G AND L/L I.R.
NO DISCHARGE RESISTOR: 6000M Ω (MIN.) @ 100VDC, 20°C AND 50% RH

RECOMMENDED RECEIVING INSPECTION HIPOT:

LINE TO GROUND: 100 VDC FOR 1 MINUTE CAUTION: THIS FILTER USES
LINE TO LINE: 100 VDC FOR 1 MINUTE POLARIZED CAPACITORS.

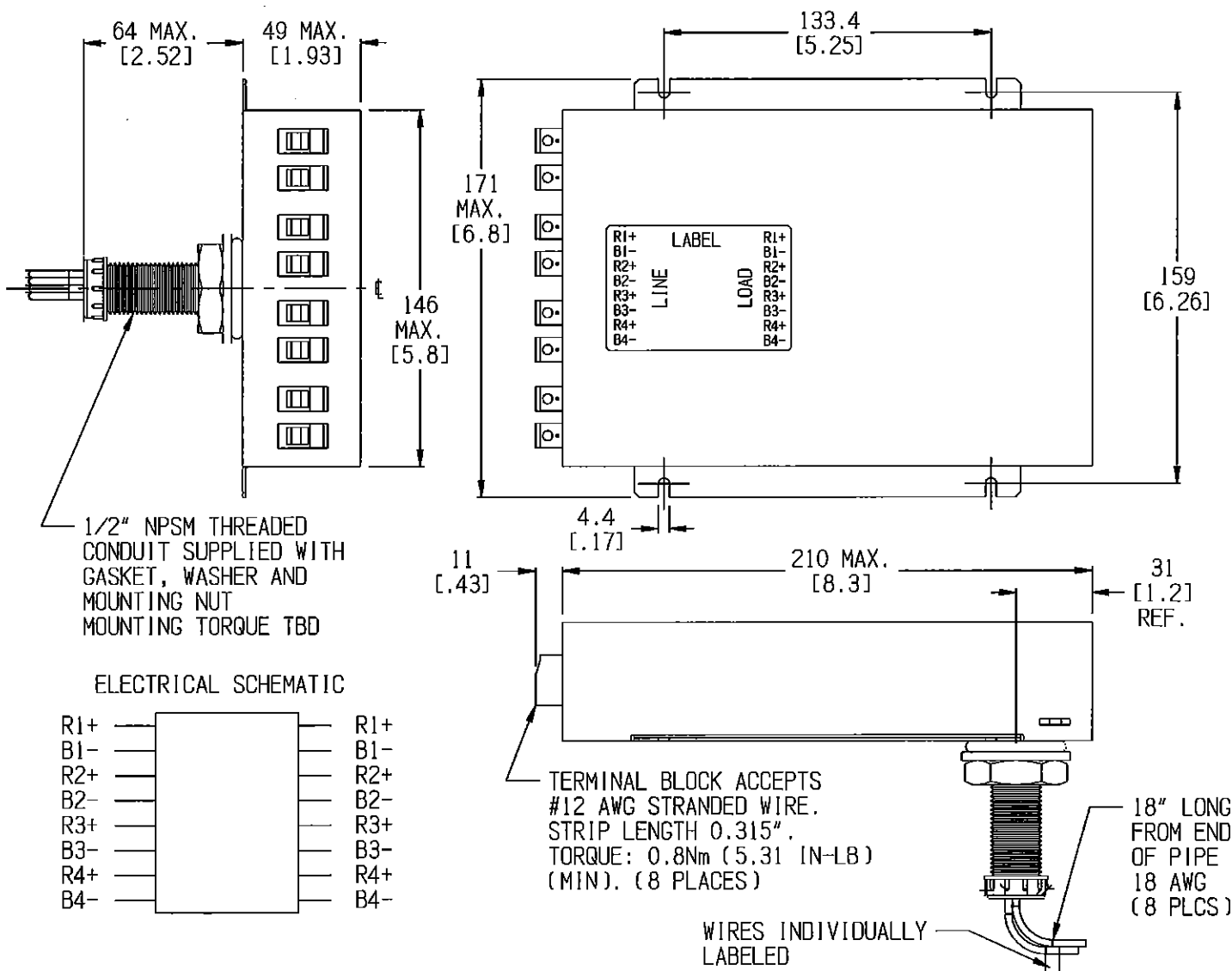
FILTER APPROVAL:

THE BEST WAY TO SELECT AND QUALIFY A FILTER IS FOR YOUR ENGINEERING TO TEST THE UNIT IN YOUR EQUIPMENT.

CUSTOMER DRAWING

CATALOG # MRI43100W

ECN#	APPRVD	DATE
/	/	/



50 Ω - 50 Ω (MINIMUM) INSERTION LOSS

FREQUENCY	10 kHz	50 kHz	100 kHz	500 kHz	1 MHz	5 MHz	10 MHz	50 MHz	100 MHz	500 MHz	1 GHz	/
COMMON dB	100	100	100	100	100	100	100	100	100	100	100	/
DIFF. dB	100	100	100	100	100	100	100	100	100	100	100	/

PARTS SHALL COMPLY WITH TYCO ELECTRONICS 138-702 SPECIFICATION FOR HAZARDOUS SUBSTANCES

UNLESS OTHERWISE SPECIFIED TOLERANCE TO BE ±1.5 [0.06] MATERIAL & FINISH: AS SUPPLIED DIMENSIONS IN MILLIMETERS

NOTES: CAUTION: THIS UNIT USES POLARIZED CAPACITORS

TE TE Connectivity

MRI FILTER

TE PART NO.: 1-1609091-5

SCALE:	DATE:	DRAWING NUMBER:	REV.
3/8	26DEC17	MRI43100W	2
DRW. BY:	ORIG:		
LJD	DP		

MRI43100W02.cxd

Mouser Electronics

Authorized Distributor

Click to View Pricing, Inventory, Delivery & Lifecycle Information:

[TE Connectivity:](#)

[MRI43100W](#)