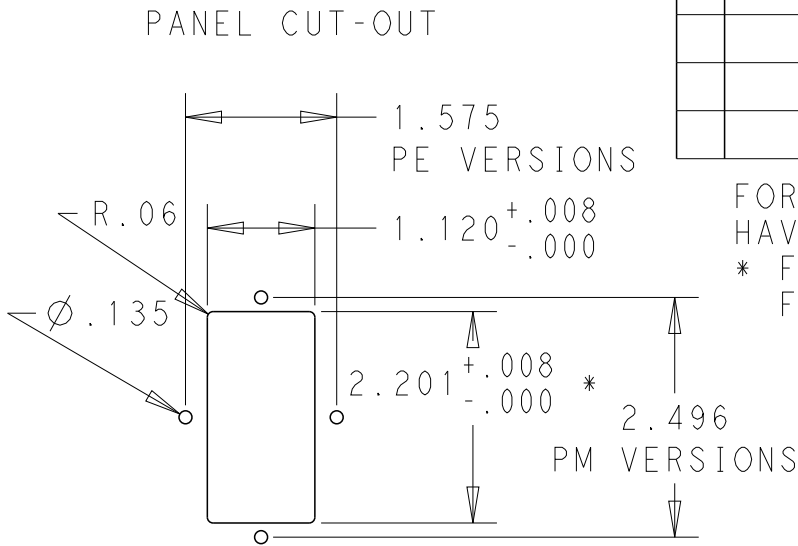


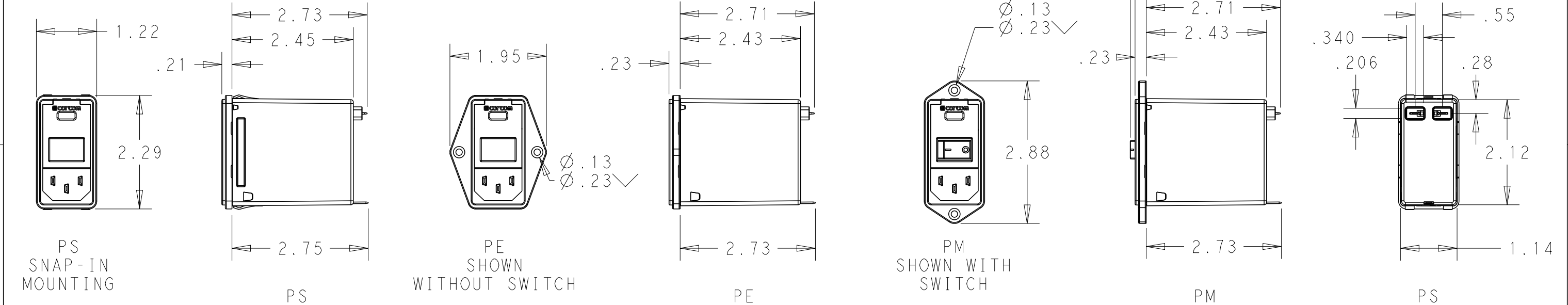
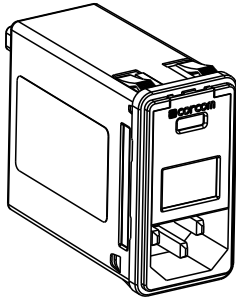
| LOC | DIST | REVISIONS |     |               |           |     |      |
|-----|------|-----------|-----|---------------|-----------|-----|------|
|     |      | P         | LTR | DESCRIPTION   | DATE      | DWN | APVD |
| X53 | -    |           | A   | ECO-10-017557 | 10JAN2012 | EC  | EC   |
|     |      |           |     |               |           |     |      |
|     |      |           |     |               |           |     |      |
|     |      |           |     |               |           |     |      |

| MINIMUM INSERTION LOSS, 50Ω LINE AND LOAD IMPEDANCES |                |    |    |    |    |    |                                  |                |    |    |    |    |    |
|--|----------------|----|----|----|----|----|----------------------------------|----------------|----|----|----|----|----|
| LINE TO GROUND (COMMON MODE)                         |                |    |    |    |    |    | LINE TO LINE (DIFFERENTIAL MODE) |                |    |    |    |    |    |
| CURRENT RATING                                       | FREQUENCY, MHz |    |    |    |    |    | CURRENT RATING                   | FREQUENCY, MHz |    |    |    |    |    |
|  | .15            | .5 | 1  | 3  | 10 | 30 |                                  | .15            | .5 | 1  | 3  | 10 | 30 |
| 3 AMP  | 50             | 60 | 60 | 49 | 40 | 30 | 3 AMP                            | 25             | 60 | 60 | 53 | 45 | 40 |
| 6 AMP  | 34             | 58 | 58 | 47 | 37 | 30 | 6 AMP                            | 9              | 50 | 62 | 54 | 46 | 40 |
| 10 AMP   | 6              | 35 | 45 | 45 | 38 | 30 | 10 AMP                           | 10             | 20 | 59 | 54 | 48 | 40 |

SCHEMATIC



FOR PS VERSIONS THE SHORT EDGES MUST HAVE R.02 ON INSERTION SIDE.  
\* FOR PANEL THICKNESS 0.031-0.079 USE 2.201  
FOR PANEL THICKNESS 0.083-0.114 USE 2.213.



PART NUMBER SYSTEM

P S O S O S M 6 E

MOUNTING STYLE  
S = SEE ABOVE  
E = SEE ABOVE  
M = SEE ABOVE

SWITCH OPTIONS  
O = NONE  
S = DOUBLE POLE,  
SINGLE THROW

FUSE LOCATIONS  
D = DUAL FUSING  
S = SINGLE FUSING  
INCLUDES CONVERSION CLIP

CURRENT  
3 = 3 AMP  
6 = 6 AMP  
X = 10 AMP

PSOSOSM6E EXAMPLE:  
SNAP-IN MOUNTING  
WITH SWITCH  
SINGLE FUSING  
6 AMP  
O'S ARE ZEROS.

HIPOT RATING (ONE MINUTE)

LINE TO GROUND: 1500 VAC

LINE TO LINE: 1450 VDC

OPERATING FREQUENCY: 50/60 Hz

RATED VOLTAGE: 120/250 VAC

FUSING: ACCEPTS 3AG Ø 1/4" X 1-1/4"  
OR METRIC Ø 5 mm X 20 mm

OPERATING AMBIENT TEMP: -10°C TO 40°C

STORAGE TEMPERATURE: -40°C TO 85°C

MAX LEAKAGE CURRENT .25mA @ 120V 60Hz

PER LINE TO GROUND: .50mA @ 250V 60Hz

HUMIDITY: 21 DAYS, 40°C @ 95%RH

CURRENT OVERLOAD: 6X RATED FOR 8 SEC

SWITCH: 10K CYCLES @ 51 AMP INRUSH

TERMINALS: 0.187" X .032 FASTON TABS

SAFETY AGENCIES: UL RECOGNIZED,  
CSA CERTIFIED,  
VDE APPROVED.

THIS DRAWING IS A CONTROLLED DOCUMENT.

DWN EC 20DEC2011

CHK - 20DEC2011

APVD EC 20DEC2011

PRODUCT SPEC -

APPLICATION SPEC -

WEIGHT -

CUSTOMER DRAWING

**TE** TE Connectivity

MEDIUM P SERIES  
SWITCHED, FUSED,  
2-STAGE FILTERED INLET

SIZE A3 CAGE CODE 00779 DRAWING NO. C-MEDIUM-P-SERIES

RESTRICTED TO -

SCALE 1:2 SHEET 1 OF 1 REV A

# Mouser Electronics

Authorized Distributor

Click to View Pricing, Inventory, Delivery & Lifecycle Information:

[TE Connectivity:](#)

[PE000DM6E](#)