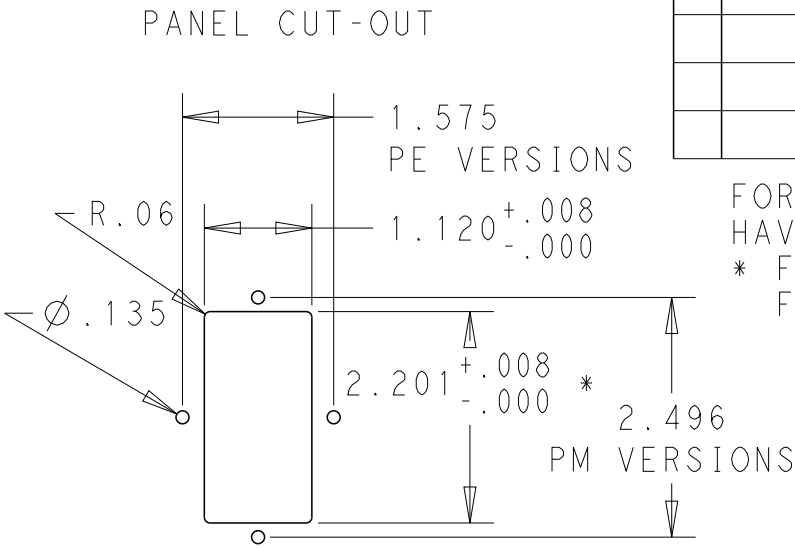


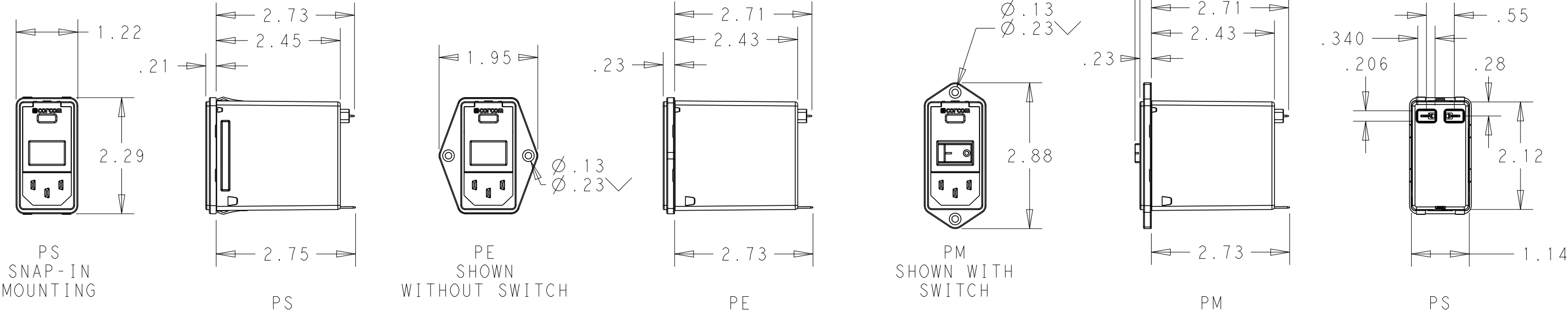
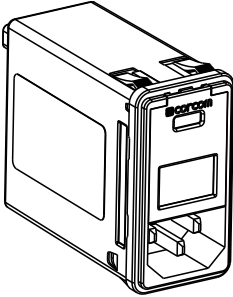
LOC	DIST	REVISIONS				
		P	LTR	DESCRIPTION	DATE	DWN
X53	-		A	ECO-10-017557	10JAN2012	EC

MINIMUM INSERTION LOSS, 50Ω LINE AND LOAD IMPEDANCES													
LINE TO GROUND (COMMON MODE)							LINE TO LINE (DIFFERENTIAL MODE)						
CURRENT RATING	FREQUENCY, MHz						CURRENT RATING	FREQUENCY, MHz					
	.15	.5	1	3	10	30		.15	.5	1	3	10	30
3 AMP	50	60	60	49	40	30	3 AMP	25	60	60	53	45	40
6 AMP	34	58	58	47	37	30	6 AMP	9	50	62	54	46	40
10 AMP	6	35	45	45	38	30	10 AMP	10	20	59	54	48	40

SCHEMATIC



FOR PS VERSIONS THE SHORT EDGES MUST HAVE R.02 ON INSERTION SIDE.  
\* FOR PANEL THICKNESS 0.031-0.079 USE 2.201  
FOR PANEL THICKNESS 0.083-0.114 USE 2.213.



PART NUMBER SYSTEM

P S O S O S M 6 E

MOUNTING STYLE  
S = SEE ABOVE  
E = SEE ABOVE  
M = SEE ABOVE

SWITCH OPTIONS  
O = NONE  
S = DOUBLE POLE,  
SINGLE THROW

FUSE LOCATIONS  
D = DUAL FUSING  
S = SINGLE FUSING  
INCLUDES CONVERSION CLIP

CURRENT  
3 = 3 AMP  
6 = 6 AMP  
X = 10 AMP

PSOSOSM6E EXAMPLE:  
SNAP-IN MOUNTING  
WITH SWITCH  
SINGLE FUSING  
6 AMP  
O'S ARE ZEROS.

HIPOT RATING (ONE MINUTE)

LINE TO GROUND: 1500 VAC

LINE TO LINE: 1450 VDC

OPERATING FREQUENCY: 50/60 Hz

RATED VOLTAGE: 120/250 VAC

FUSING: ACCEPTS 3AG Ø1/4" X 1-1/4"  
OR METRIC Ø5 mm X 20 mm

OPERATING AMBIENT TEMP: -10°C TO 40°C

STORAGE TEMPERATURE: -40°C TO 85°C

MAX LEAKAGE CURRENT .25mA @ 120V 60Hz

PER LINE TO GROUND: .50mA @ 250V 60Hz

HUMIDITY: 21 DAYS, 40°C @ 95%RH

CURRENT OVERLOAD: 6X RATED FOR 8 SEC

SWITCH: 10K CYCLES @ 51 AMP INRUSH

TERMINALS: 0.187" X .032 FASTON TABS

SAFETY AGENCIES: UL RECOGNIZED,  
CSA CERTIFIED,  
VDE APPROVED.

THIS DRAWING IS A CONTROLLED DOCUMENT.

DWN EC 20DEC2011

CHK - 20DEC2011

APVD EC 20DEC2011

PRODUCT SPEC -

APPLICATION SPEC -

WEIGHT -

CUSTOMER DRAWING

DIMENSIONS:  
INCHES

TOLERANCES UNLESS  
OTHERWISE SPECIFIED:

0 PLC ±.2

1 PLC ±.1

2 PLC ±.02

3 PLC ±.005

4 PLC ±.0005

ANGLES ±1

FINISH -

TE Connectivity

MEDIUM P SERIES  
SWITCHED, FUSED,  
2-STAGE FILTERED INLET

SIZE A300779

CAGE CODE 00779

DRAWING NO C-MEDIUM-P-SERIES

RESTRICTED TO -

SCALE 1:2

SHEET 1 OF 1

REV A

# Mouser Electronics

Authorized Distributor

Click to View Pricing, Inventory, Delivery & Lifecycle Information:

[TE Connectivity:](#)

[PM000DMXE](#)