

| 6ESK1 | | | |
|-----------|-------|---------|------|
| EC # | APPR. | DDMMYY | REV. |
| 13-015670 | TAM | 04OCT13 | H |

SAFETY ORGANIZATIONS

THIS FILTER HAS BEEN FORMALLY RECOGNIZED, CERTIFIED OR APPROVED BY THE LISTED AGENCY. THEREFORE, ALL TEST/REQUIREMENTS SPECIFIED IN THE LATEST REVISION OF THE FOLLOWING AGENCY STANDARDS HAVE BEEN MET:



UL RECONGNIZED: UL 1283



CSA CERTIFIED: CSA C22.2 No. 8



VDE APPROVED: EN 60939-2

RELIABILITY SPECIFICATIONS:

STORAGE TEMPERATURE: -40°C TO +85°C
HUMIDITY: 21 DAYS @ 40°C 95% RH.
CURRENT OVERLOAD TEST: 6 TIMES I_r FOR 8 SECONDS

RECOMMENDED RECEIVING INSPECTION HIPOT:

LINE TO GROUND: 1500 VAC FOR 1 MINUTE
LINE TO LINE: 1450 VDC FOR 1 MINUTE

FILTER APPROVAL:

THE BEST WAY TO SELECT AND QUALIFY A FILTER IS FOR YOUR ENGINEERING TO TEST THE UNIT IN YOUR EQUIPMENT.

OPERATING SPECIFICATIONS

LINE CURRENT/VOLTAGE: 6 AMP, 120/250 VAC

LINE FREQUENCY: 50-60Hz

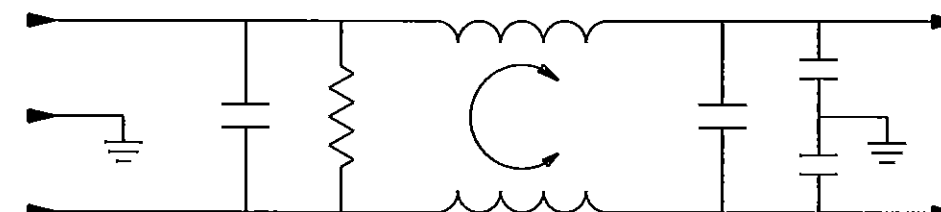
MAXIMUM LEAKAGE CURRENT, EACH LINE TO GROUND:
.25mA @ 120V, 60Hz
.48mA @ 250V, 50Hz

OPERATING AMBIENT TEMP. RANGE: -10°C TO +40°C @ RATED CURRENT, I_r .
IN AN AMBIENT, T_a , HIGHER THAN 40°C, THE MAXIMUM OPERATING CURRENT, I_o , IS AS FOLLOWS:

$$I_o = I_r \sqrt{\frac{85 - T_a}{45}}$$

TEST SPECIFICATIONS:

INDUCTANCE: 8.73 mH NOMINAL
CAPACITANCE: (MEASURED @ 1KHz, 0.250VAC MAX., 25°C±1°C)
LINE TO GROUND: .006 μ F ±20%
LINE TO LINE: .54 μ F ±20%
DISCHARGE RESISTOR: 330 K Ω
L/G AND L/L I.R.
NO DISCHARGE RESISTOR: 6000M Ω (MIN.) @ 100VDC, 20°C AND 50% RH



| 50 Ω - 50 Ω (MINIMUM) INSERTION LOSS | | | | | | | | | | | | | PARTS SHALL COMPLY WITH TYCO ELECTRONICS 138-702 SPECIFICATION FOR HAZARDOUS SUBSTANCE | | | | | | | | | |
|--|-----|-----|------------------------|-----|---|----|----|----|----|----|----|---|--|--|--|--|--|--|--|--|--|--|
| FREQUENCY MHz | .01 | .02 | .05 | .08 | .15 | .5 | 1 | 5 | 10 | 20 | 30 | / | UNLESS OTHERWISE SPECIFIED TOLERANCE TO BE ± 0.63 MATERIAL & FINISH: AS SUPPLIED | | | | | | | | | |
| COMMON dB | 7 | 13 | 21 | 25 | 32 | 44 | 45 | 45 | 45 | 38 | 27 | / | | | | | | | | | | |
| DIFF. dB | 1 | 1 | 2 | 3 | 25 | 59 | 65 | 65 | 65 | 50 | 50 | / | | | | | | | | | | |
| SHEET SIZE | B | | THIRD ANGLE PROJECTION | | THIS INFORMATION IS CONFIDENTIAL AND PROPRIETARY TO TYCO ELECTRONICS CORPORATION AND ITS WORLDWIDE SUBSIDIARIES AND AFFILIATES. IT MAY NOT BE DISCLOSED TO ANYONE OTHER THAN TYCO ELECTRONICS PERSONNEL, WITHOUT WRITTEN AUTHORIZATION FROM TYCO ELECTRONICS CORPORATION, HARRISBURG, PENNSYLVANIA USA. | | | | | | | | NOTES: | | | | | | | | | |
| | | | | | | | | | | | | | | | | | | | | | | |
| | | | | | | | | | | | | | | | | | | | | | | |
| | | | | | | | | | | | | | | | | | | | | | | |
| | | | | | | | | | | | | | TE Connectivity | | | | | | | | | |
| | | | | | | | | | | | | | CUSTOMER DRAWING | | | | | | | | | |
| | | | | | | | | | | | | | TE PART NO: 6609036-5 | | | | | | | | | |
| | | | | | | | | | | | | | DATE: 12SEP89 | | | | | | | | | |
| | | | | | | | | | | | | | DRAWING NUMBER: 6ESK1 | | | | | | | | | |
| | | | | | | | | | | | | | REV. H | | | | | | | | | |
| | | | | | | | | | | | | | DRW. BY: LJO | | | | | | | | | |
| | | | | | | | | | | | | | DRG: CFW | | | | | | | | | |

Mouser Electronics

Authorized Distributor

Click to View Pricing, Inventory, Delivery & Lifecycle Information:

[TE Connectivity:](#)

[6ESK1](#)