

## SAFETY ORGANIZATION(S):

THIS FILTER HAS BEEN FORMALLY RECOGNIZED, CERTIFIED OR APPROVED BY THE LISTED AGENCY. THEREFORE, ALL TEST/REQUIREMENTS SPECIFIED IN THE LATEST REVISION OF THE FOLLOWING AGENCY STANDARDS HAVE BEEN MET.

UL RECOGNIZED  
CSA CERTIFIED  
VDE APPROVED  
SEV PENDING

UL 544  
CSA 22.2, NO.0,0.4,8  
VDE 565-3

## OPERATING SPECIFICATIONS:

LINE VOLTAGE/CURRENT: 6 AMP, 120/250 VAC  
5 AMP./40°C, 250 VAC  
LINE FREQUENCY, 50-60Hz

MAX. LEAKAGE CURRENT, EACH: 2  $\mu$ A at 120V 60Hz  
LINE TO GROUND: 5  $\mu$ A at 250V 50Hz

OPERATING AMBIENT TEMP. RANGE: -10°C TO +40°C @ RATED CURRENT,  $I_r$

IN AN AMBIENT,  $T_a$ , HIGHER THAN 40°C, THE MAXIMUM OPERATING CURRENT,  $I_o$ , IS AS FOLLOWS:

$$I_o = I_r \sqrt{\frac{85 - T_a}{45}}$$

## RELIABILITY SPECIFICATIONS:

STORAGE TEMPERATURE: -40°C TO +85°C  
HUMIDITY: 21 DAYS @ 40°C 95% RH  
CURRENT OVERLOAD TEST: 6 TIMES RATED CURRENT FOR 8 SECONDS

## TEST SPECIFICATIONS:

INDUCTANCE: 18.5 mH NOMINAL  
CAPACITANCE: (MEASURED @ 1 KHz, 0.25VAC MAX., 25°C±1°C)

LINE TO LINE: .94  $\mu$ F ±20%  
DISCHARGE RESISTOR: 330K $\Omega$

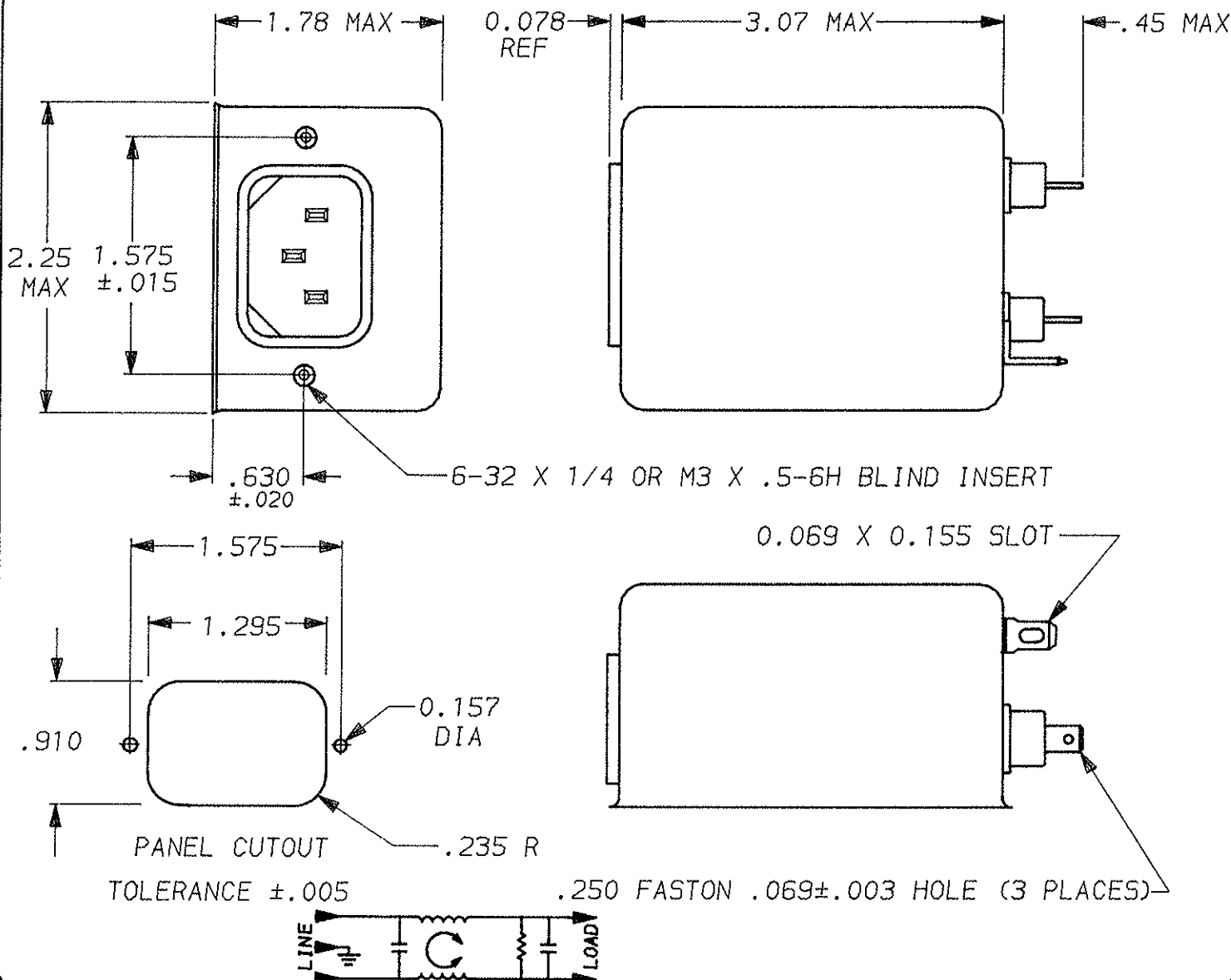
LINE/GROUND AND LINE/LINE: 6000M $\Omega$  (MIN) AT 100VDC  
INSULATION RESISTANCE: 20°C AND 50% RH

## RECOMMENDED RECEIVING INSPECTION HIPOT:

LINES TO GROUND: 2250 VDC FOR 1 MINUTE  
LINE TO LINE: 1450 VDC FOR 1 MINUTE

## FILTER APPROVAL:

THE BEST WAY TO SELECT AND QUALIFY A FILTER IS FOR YOUR ENGINEERING TO TEST THE UNIT IN YOUR EQUIPMENT.



## 50 $\Omega$ - 50 $\Omega$ (MINIMUM) INSERTION LOSS

FREQUENCY MHz	.01	.03	.05	.15	.5	1	2	5	8	10	20	30
COMMON dB	16	26	38	46	46	33	25	15	11	9	5	2
DIFF. dB	4	2	14	51	70	70	65	55	50	47	37	37

UNLESS OTHERWISE SPECIFIED,  
TOLERANCE TO BE ±.025

MATERIAL & FINISH: AS SUPPLIED

This document is proprietary to CORCOM INC. and is not to be reproduced nor used for manufacturing purposes except on CORCOM'S prior written consent.

**corcom**  
LIBERTYVILLE, IL 60048

POWER LINE FILTER

DATE: 10-4-93 CATALOG NO.  
APPRVD: TA-M 6EHT7 - 6EHT7M  
CAD NO. 6EHT7.02

# Mouser Electronics

Authorized Distributor

Click to View Pricing, Inventory, Delivery & Lifecycle Information:

[TE Connectivity:](#)

[6EHT7M](#)