

## Compact 690 VAC power line EMC/RFI filter

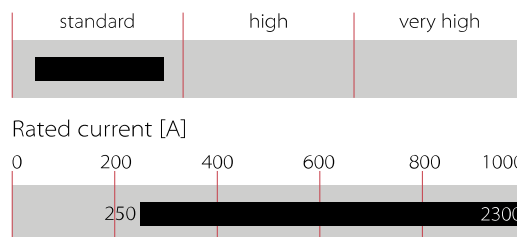


- High current 3-phase filter up to 2300 A
- Extremely compact and light weight design
- Minimum installation foot print
- Performance optimised for standard purpose applications
- FN3310 series without Cy capacitors to ground
- FN3311 IT versions for use in IT power networks



## Performance indicators

### Attenuation performance



## Technical Specifications

<b>Maximum continuous operating voltage</b>	3x760 VAC for FN 3310 HV and FN 3311 HVIT 3x760/440 VAC for FN 3311 HV
<b>Nominal operating voltage</b>	690 VAC
<b>Rated currents</b>	250 to 2300 A @ 50°C
<b>Overload capability</b>	4x rated current at switch on, max. 8 sec 1.5x rated current for 1 minute, once per hour
<b>Operating frequency</b>	DC to 60 Hz
<b>High potential test voltage</b>	P -> E 3.0 kVAC for 2 s (FN 3310 HV/FN 3311 HVIT 3.35 kVAC for 2 s) P -> P 3.45 kVDC for 2 s
<b>Temperature range (operation and storage)</b>	-40°C to +100°C
<b>Climatic category</b>	40/100/21 acc. to IEC 60068-1
<b>Protection category</b>	IP 00
<b>Flammability corresponding to</b>	UL 94V-0
<b>Design corresponding to</b>	UL 1283, CSA 22.2 No. 8, IEC/EN 60939, EN 60721-3
<b>MTBF (Mil-HB-217F)</b>	>200,000 h @ 50°C/1000 V
<b>Terminals/Housing</b>	Ni plated cu bars/Metal

## Approvals & Compliances



The FN 3311/FN 3310 product series of standard EMC/RFI filters are based on Schaffner's many years of expertise in filter design for all types of converter and inverter applications. Installed between the PV inverter and the power grid, the FN 3311/FN 3310 AC filters are used to influence positively the conducted emissions on the grid side to help to comply with the required emission standards.

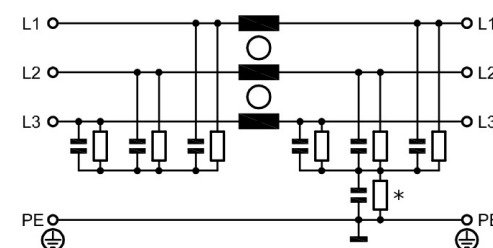
## Features and Benefits

The FN 3311/FN 3310 series are the most compact dedicated high current AC filters, not only suitable for PV applications, but being an optimum fit with most modern PV inverter topologies. In addition the filters can be configured in a very flexible way to fulfil custom specific application requirements. All FN 3311/FN 3310 come in unsymmetrical housings, which help to prevent inverse installation and wrong electrical connection. Along with solar panel-side installed Schaffner DC EMC/RFI filters FN 2211/FN 2210, the AC filters FN 3311/FN 3310 are key to meet the stringent international standards for electro-magnetic compatibility and help to ensure a reliable and fault-free operation of the entire PV system.

## Typical Applications

The FN 3311/FN 3310 series are primarily designed for all kind of power line connected converter and inverter applications between 250 and 2'300 A. However, they are optimised for PV inverter and can potentially also be applied for general purpose motor drives applications.

### Typical electrical schematic



Filter Selection Table

Filters */**		Rated current @ 50°C	Typical inverter AC power rating***	Leakage current**** @ 760 VAC/50 Hz	Power losss @ 25°C/DC	Weight
		[A]	[kVA]	[mA]	[W]	[kg]
FN3311HV with Cy caps		FN3311HVIT with Cy caps				
FN3311HV-250-99-C18-R55	FN3311HVIT-250-99-C18-R5	250	240	0.09	18	2.7
FN3311HV-400-99-C18-R55	FN3311HVIT-400-99-C18-R5	400	380	0.09	30	3.3
FN3311HV-600-99-C18-R55	FN3311HVIT-600-99-C18-R5	600	570	0.09	33	4.5
FN3311HV-1000-99-C18-R55	FN3311HVIT-1000-99-C18-R5	1000	950	0.09	70	6.1
FN3311HV-1500-99-C18-R55	FN3311HVIT-1500-99-C18-R5	1500	1430	0.09	133	11.0
FN3311HV-2300-99-C18-R55	FN3311HVIT-2300-99-C18-R5	2300	2200	0.09	201	18.0
FN3310 without Cy caps						
FN3310HV-250-99-R5		250	240		18	2.7
FN3310HV-400-99-R5		400	380		30	3.3
FN3310HV-600-99-R5		600	570		33	4.5
FN3310HV-1000-99-R5		1000	950		70	6.1
FN3310HV-1500-99-R5		1500	1430		133	11.0
FN3310HV-2300-99-R5		2300	2200		201	18.0

\* Filters with higher current ratings available upon request.

\*\* Filters with reduced Cy capacitance to ground for high asymmetrical currents and higher voltages available upon request.

\*\*\* Calculated at rated current, 690 VAC and cos phi = 0.8. The exact value depends upon the efficiency of the drive, the motor and the entire application.£

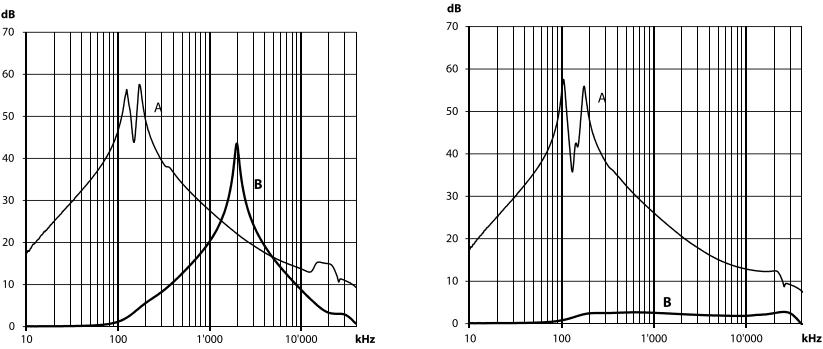
\*\*\*\* Leakage current according IEC 60939-1

Typical Filter Attenuation Curves

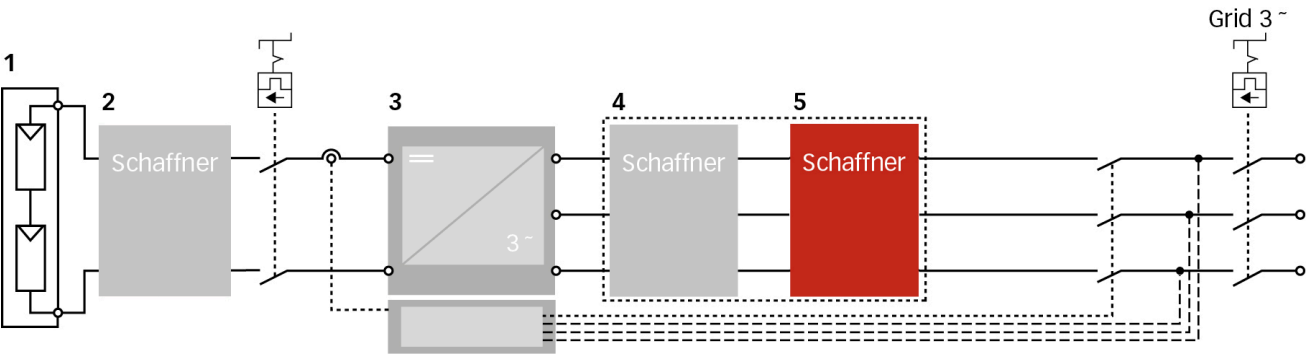
Per CISPR 17; A=50 Ω/50 Ω sym; B=50 Ω/50 Ω asym

FN3311HV-250...2300-99-C18-R5 and FN3311HVIT-250...2300-99-C18-R55

FN3310HV-250...2300-99-R5



Typical Block Schematic



- 1 PV modules

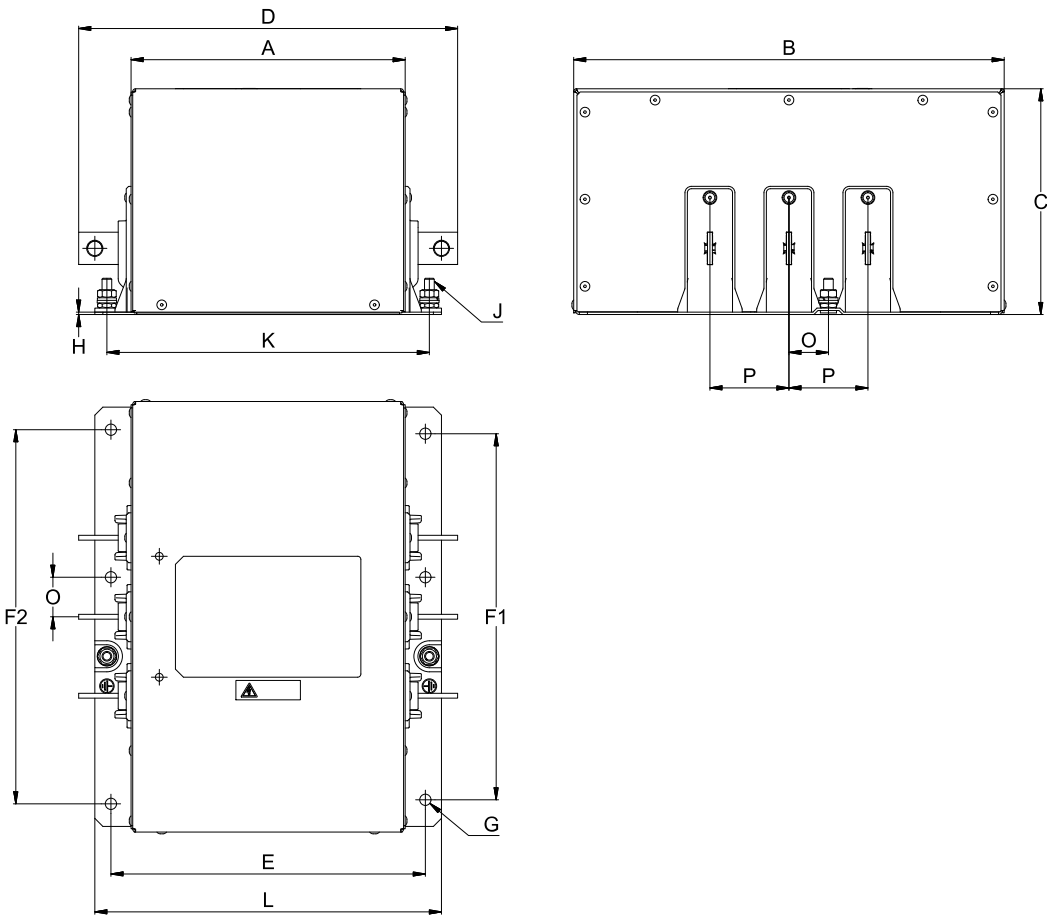
2 Schaffner DC filter FN 22xx
- 3 Central Inverter

4 Schaffner magnetic components
- 5 Schaffner AC EMC/EMI filter FN 3xxx

Important note: depending on the grounding scheme of the solar power system, including the solar panel and the grid side transformer, the appropriate DC- and AC EMC/EMI filter version need to be selected. For support, please contact your local Schaffner sales office or partner.

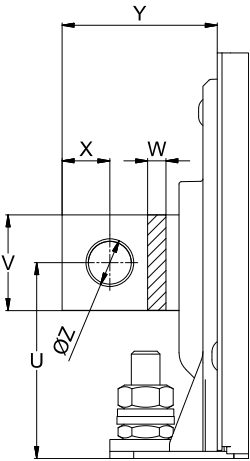
Mechanical Data

250 to 2'300 A types

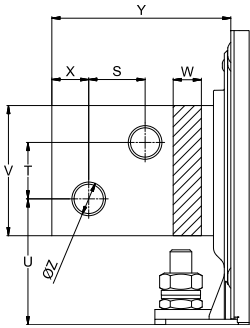


Busbar Connections

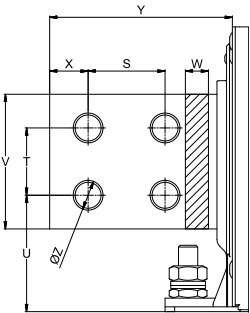
250 to 1'000 A types



1'500 A types



2'300 A types



**Note:** all FN3311 and FN3310 provide unsymmetrical mounting hole patterns to prevent inverse filter installation in the field.

Dimensions Of FN3311HV And FN3310HV Series

(the FN3311HVIT versions have the same dimensions as the FN3311HV)

	250 A	400 A	600 A	1'000 A	1'500 A	2'300 A
A	170	175	190	190	195	220
B	267	280	290	290	310	320
C	140	140	140	140	150	165
D	235	250	265	305	360	410
E	195	205	220	220	240	265
F1	227	240	250	250	270	275
F2	232	245	255	255	275	280
G	Ø7 (6x)	Ø9 (6x)	Ø9 (6x)	Ø9 (6x)	Ø11 (6x)	Ø11 (6x)
H	1.5	2	2.5	2.5	2.5	2.5
J	M6 (2x)	M8 (2x)	M8 (2x)	M8 (2x)	M10 (2x)	M10 (2x)
K	200 (+/- 1)	210 (+/- 1)	225 (+/- 1)	225 (+/- 1)	241 (+/- 1)	266 (+/- 1)
L	215	230	245	245	265	290
O	24.5	27	29.5	29.5	34.8	40
P	49 (+/- 0.5)	54 (+/- 0.5)	59 (+/- 0.5)	59 (+/- 0.5)	69.5 (+/- 0.5)	80 (+/- 0.5)
S					26	40
T					26	35
U	41	46	50	53	58	60.5
V	20	25	25	40	60	70
W	3	4	8	8	10	15
X	10	12.5	12.5	20	17	20
Y	32.5	37.5	37.5	57.5	82.5	95
Z	Ø9	Ø11	Ø11	Ø13.5	Ø13.5	Ø13.5

All dimensions in mm; 1 inch = 25.4 mm  
Tolerances according: ISO 2768-m/EN 22768-m, if not stated otherwise

Please see the brochure "Basics in EMC and Power Quality" on our website [www.schaffner.com](http://www.schaffner.com) to find more details on filter connectors.

Headquarters, Global  
Innovation and  
Development

**Switzerland**  
**Schaffner Group**  
Industrie Nord  
Nordstrasse 5  
4542  
Luterbach  
+41 32 681 66 26  
[info@schaffner.com](mailto:info@schaffner.com)

To find your local partner within  
Schaffner's global network [schaffner.com](https://www.schaffner.com)

© 2025 Schaffner Group

The content of this document has been carefully checked and understood. However, neither Schaffner nor its subsidiaries assume any liability whatsoever for any errors or inaccuracies of this document and the consequences thereof. Published specifications are subject to change without notice. Product suitability for any area of application must ultimately be determined by the customer. In all cases, products must never be operated outside their published specifications. Schaffner does not guarantee the availability of all published products. This disclaimer shall be governed by substantive Swiss law and resulting disputes shall be settled by the courts at the place of business of Schaffner Holding AG. Latest publications and a complete disclaimer can be downloaded from the Schaffner website. All trademarks recognized.

Sales and Application  
Centers

**Finland**  
**Schaffner Oy**  
Lohjanharjuntie 1109  
08500  
Lohja  
+ 358 50 468 72 84  
[finlandsales@schaffner.com](mailto:finlandsales@schaffner.com)

**France**  
**Schaffner EMC S.A.S.**  
16-20 Rue Louis Rameau  
95875  
Bezons  
+33 1 34 34 30 60  
[francesales@schaffner.com](mailto:francesales@schaffner.com)

**Germany**  
**Schaffner Deutschland GmbH**  
Ohiostr. 8  
76149  
Karlsruhe  
+49 721 56910  
[germanysales@schaffner.com](mailto:germanysales@schaffner.com)

**Italy**  
**Schaffner EMC S.r.l.**  
Via Ticino, 30  
20900  
Monza (MB)  
+39 335 120 44 32  
[italysales@schaffner.com](mailto:italysales@schaffner.com)

**Japan**  
**Schaffner EMC K.K.**  
ISM Sangenjaya 7F  
1-32-12 Kamiuma Setagaya-ku  
154-0011  
Tokyo  
+81 3 5712 3650  
[japansales@schaffner.com](mailto:japansales@schaffner.com)

**Singapore**  
**Schaffner EMC Pte Ltd.**  
Blk 3015A Ubi Road 1 #05-09 Kampong Ubi  
Industrial Estate  
408705  
Singapore  
+65 63773283  
[singaporesales@schaffner.com](mailto:singaporesales@schaffner.com)

**Sweden**  
**Schaffner EMC AB**  
Östermalmströg 1  
114 42  
Stockholm  
+46 8 5050 2425  
[swedensales@schaffner.com](mailto:swedensales@schaffner.com)

**Switzerland**  
**Schaffner EMV AG**  
Industrie Nord  
Nordstrasse 5  
4542  
Luterbach  
+41 32 681 66 26  
[switzerlandsales@schaffner.com](mailto:switzerlandsales@schaffner.com)

**India**  
**Schaffner India Pvt. Ltd**  
Regus World Trade Centre  
WTC 22nd Floor Unit No 2238 Brigade  
Gateway Campus 26/1 Dr. Rajkumar Road  
Malleshwaram (W)  
560055  
Bangalore  
+91 8067935355  
[indiasales@schaffner.com](mailto:indiasales@schaffner.com)

**United Kingdom**  
**Schaffner Ltd.**  
Suite 1 Oakmede Place  
Terrace Road  
RG42 4JF  
Binfield  
+44 118 9770070  
[schaffner.uksales@te.com](mailto:schaffner.uksales@te.com)

**United States**  
**Schaffner EMC Inc.**  
52 Mayfield Avenue  
Edison, New Jersey  
+1 732 225 9533  
[usasales@schaffner.com](mailto:usasales@schaffner.com)

# Mouser Electronics

Authorized Distributor

Click to View Pricing, Inventory, Delivery & Lifecycle Information:

[TE Connectivity:](#)

[FN3310HV-1000-99-R5](#) [FN3310HV-600-99-R5](#) [FN3311HV-400-99-C18-R55](#) [FN3311HVIT-1500-99-C18-R5](#)  
[FN3311HVIT-400-99-C18-R5](#) [FN3310HV-400-99-R5](#) [FN3311HVIT-600-99-C18-R5](#) [FN3311HV-1000-99-C18-R55](#)  
[FN3310HV-250-99-R5](#) [FN3311HVIT-250-99-C18-R5](#) [FN3311HVIT-1500-99-C21-R5](#) [FN3311HV-1500-99-C18-R55](#)  
[FN3311HVIT-2300-99-C18-R5](#) [FN3311HV-250-99-C18-R55](#) [FN3311HV-600-99-C18-R55](#) [FN3311HVIT-1000-99-C18-](#)  
[R5](#) [FN3311HV-2300-99-C18-R55](#) [FN3310HV-1500-99-R5](#) [FN3310HV-2300-99-R5](#)