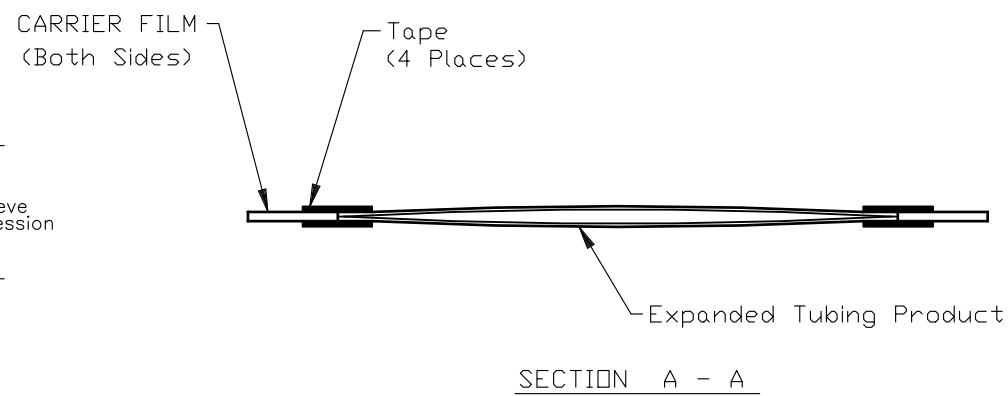
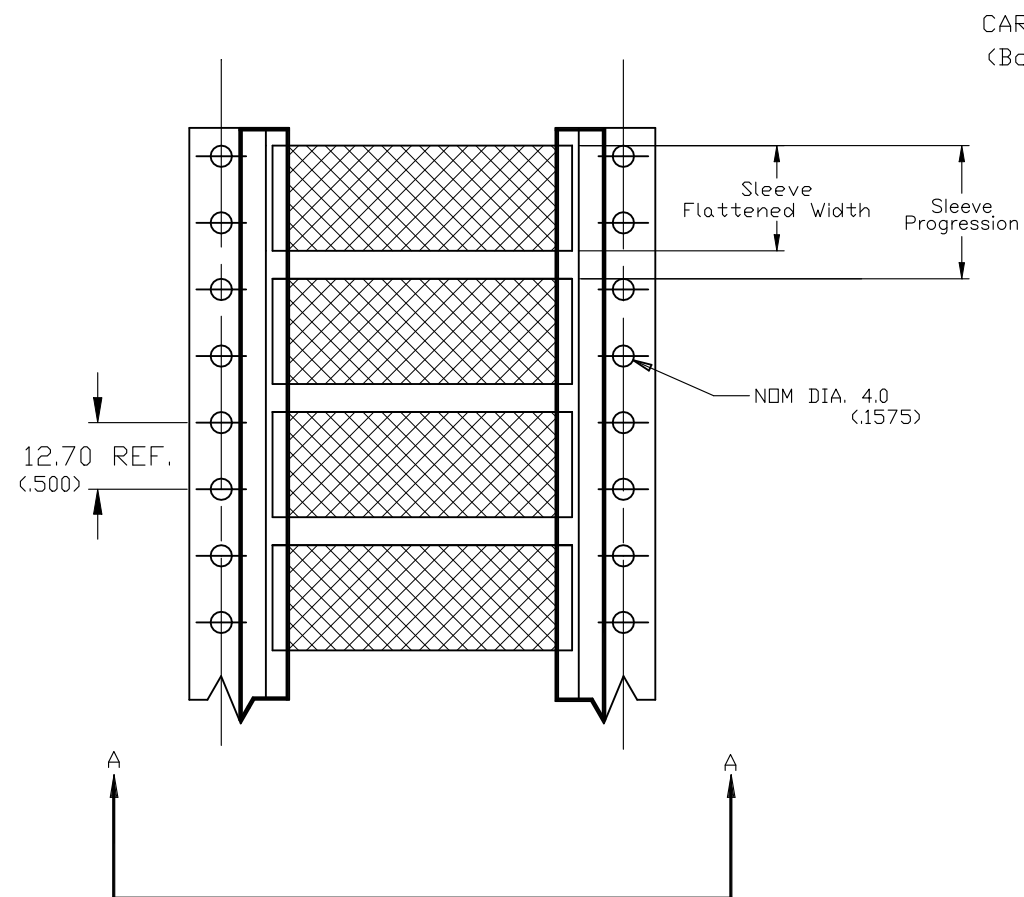
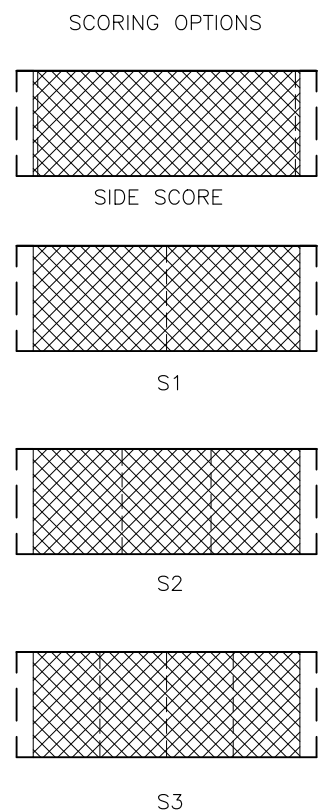


REVISIONS					
P	LTR	DESCRIPTION	DATE	DWN	APVD
	E2	REVISED PER ECR-24-216887	06AUG2024	GH	AK

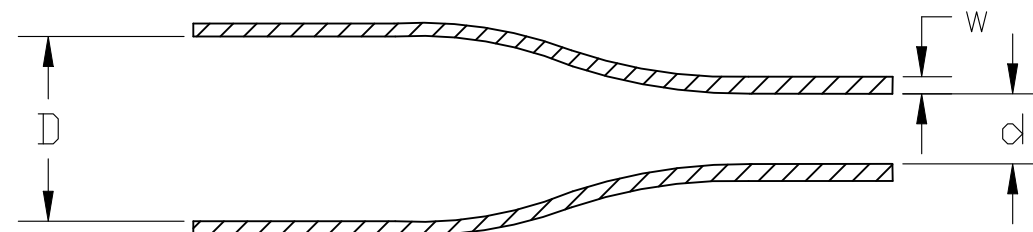



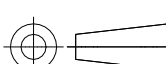
Product Size	22-18	18-12	16-10	8-4	10-2	6-250	1-400	400-1000
Minimum Sleeve Flattened Width	5.84 (.230)	8.00 (.315)	10.7 (.420)	15.5 (.610)	20.4 (.803)	30.5 (1.200)	40.4 (1.590)	60.3 (2.37)
Nominal Sleeve Progression	12.70 (.500)	12.70 (.500)	16.94 (.667)	25.40 (1.000)	29.64 (1.167)	42.34 (1.667)	50.80 (2.00)	71.96 (2.83)
"D" Minimum Supplied I.D.	3.18 (.125)	4.75 (.187)	6.35 (.250)	9.53 (.375)	12.70 (.500)	19.05 (.750)	25.40 (1.00)	38.10 (1.50)
"d" Maximum Recovered I.D.	1.07 (.042)	1.57 (.062)	2.11 (.083)	3.18 (.125)	4.22 (.166)	6.35 (.250)	8.46 (.333)	19.05 (.750)
"w" Recovered wall ±0.08 (.003)	0.58 (.023)	0.58 (.023)	0.58 (.023)	0.61 (.024)	0.61 (.024)	0.61 (.024)	0.64 (.025)	0.51 (.020)

DIMENSIONS IN mm (inches)



NOTE:
1. SIDE SCORE ALSO AVAILABLE WITH S1, S2, & S3



THIS DRAWING IS A CONTROLLED DOCUMENT.		DWN AFK 31JAN2020		<div>TE Connectivity</div>						
		CHK —								
DIMENSIONS: mm		TOLERANCES UNLESS OTHERWISE SPECIFIED:		APVD LS 04FEB2020		NAME				
				PRODUCT SPEC RW-2510		RPS — —				
		APPLICATION SPEC —		SIZE		CAGE CODE	DRAWING NO	RESTRICTED TO		
MATERIAL		FINISH		WEIGHT		A3		0198G	C-MCD160003	—
CROSS-LINKED POLYOLEFIN		—		VARIOUS		CUSTOMER DRAWING		SCALE	SHEET	REV
								—	1 OF 1	F2

Mouser Electronics

Authorized Distributor

Click to View Pricing, Inventory, Delivery & Lifecycle Information:

[TE Connectivity:](#)

[RPS-16-10/2.0-4](#)