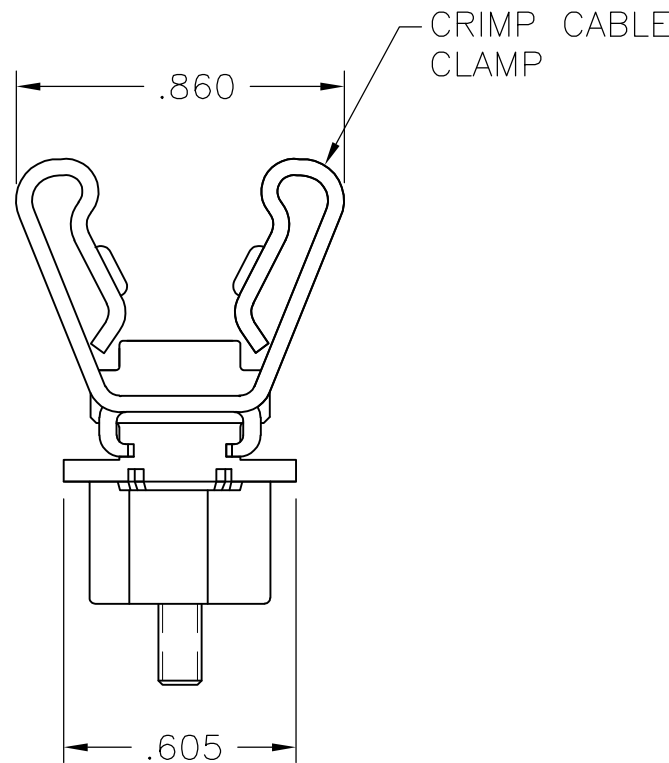
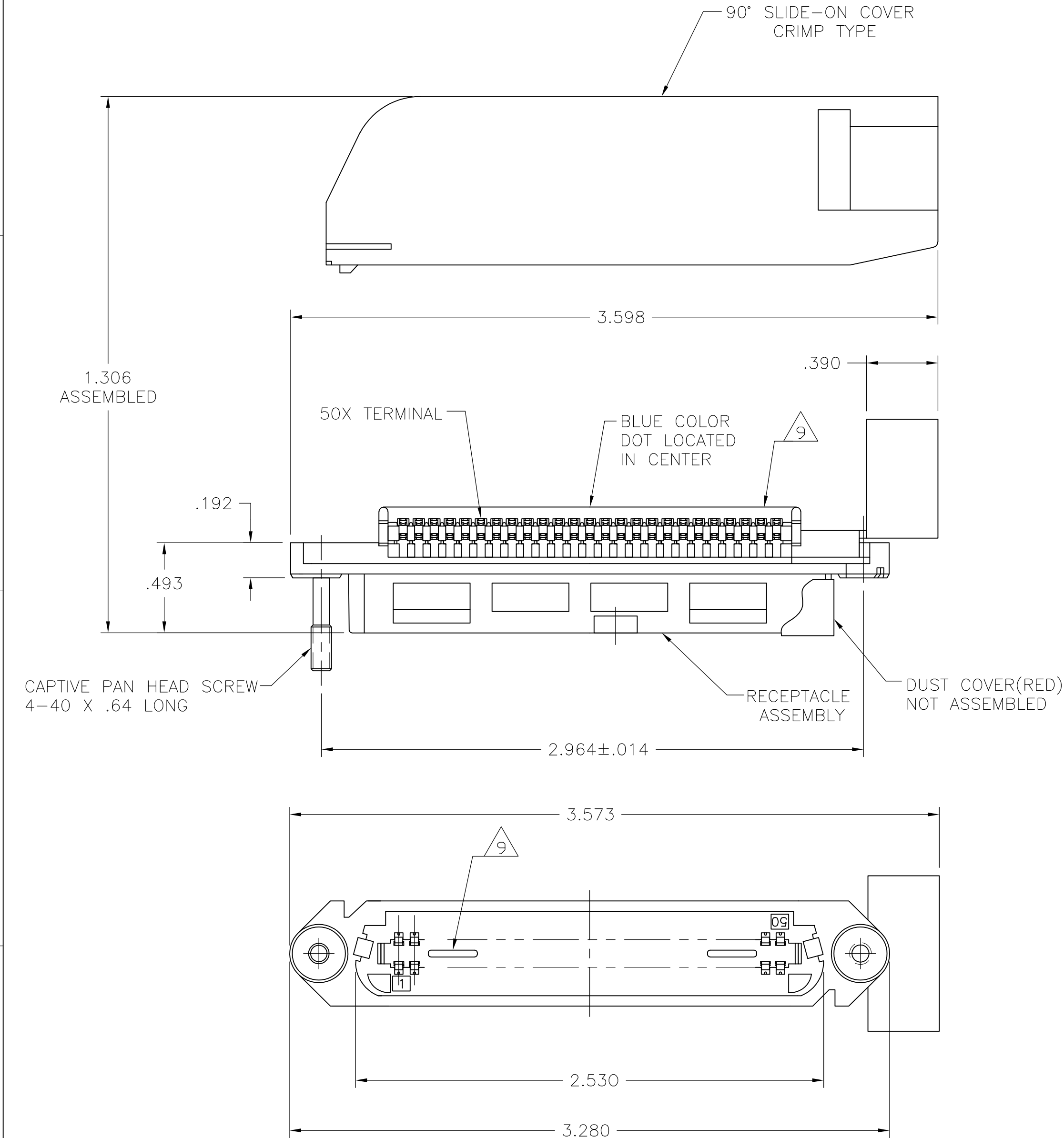






LOC	DIST	REVISIONS					
		P	LTR	DESCRIPTION	DATE	DWN	APVD
GP	00		C	REVISED PER ECO-08-007327	02OCT08	BM	WM



1. THE CONTACT SURFACES OF THE TERMINALS ARE COATED WITH LUBRICANT.
- 2 MATERIAL: HOUSING & SLIDE-ON COVER: POLYPHENYLENE. CABLE CLAMP & SCREW: ZINC PLATED STEEL. TERMINAL - HIGH STRENGTH COPPER ALLOY PLATED WITH EITHER .000030 MIN GOLD OR GOLD FLASH OVER PALLADIUM NICKEL PLATE, .000030 MIN TOTAL ON MATING SURFACE, .000050 MIN NICKEL UNDERPLATE OVER ENTIRE TERMINAL. DUST COVER: POLYETHYLENE.
3. WIRE SIZE: 24 & 26 AWG SOLID OR 24 AWG 7 STRANDS OF COPPER CONDUCTORS. MAX INSULATION DIAMETER OF .045 IS ACCEPTABLE FOR MOST APPLICATIONS.
4. CENTER-TO-CENTER SPACING OF TERMINALS IS .085 NOMINAL.
5. CABLE CLAMP & SCREW ARE ASSEMBLED TO CONNECTOR BEFORE SHIPMENT.
- 6 ALL DIMENSIONS ARE MAXIMUM UNLESS OTHERWISE SPECIFIED.
7. COVER SHIPPED UNASSEMBLED WITH CABLE CLAMP UNCRIMPED.
8. KIT SHIPPED BULK PACKAGED.
- 9 CORING MAY OR MAY NOT APPEAR AND IS AT THE DISCRETION OF AMP INCORPORATED.

THIS DRAWING IS A CONTROLLED DOCUMENT.		DWN B. MCMASTER	06JAN06	 Tyco Electronics Corporation Harrisburg, PA 17105-3608			
		CHK W. MILLHIMES	06JAN06				
DIMENSIONS: INCHES		APVD W. MILLHIMES	06JAN06	NAME RECEPTACLE ASSEMBLY, 50 POSITION, B SLOT, CRIMP TYPE, SCREW & 90 DEGREE COVER, CHAMP-LOK			
		PRODUCT SPEC —					
		APPLICATION SPEC —	SIZE A2		CAGE CODE 00779	DRAWING NO C=5553212	RESTRICTED TO —
MATERIAL 		FINISH 	WEIGHT —				
			CUSTOMER DRAWING		SCALE 2:1	SHEET 1 of 1	REV C

Mouser Electronics

Authorized Distributor

Click to View Pricing, Inventory, Delivery & Lifecycle Information:

[TE Connectivity:](#)

[5553212-3](#)