

4

3

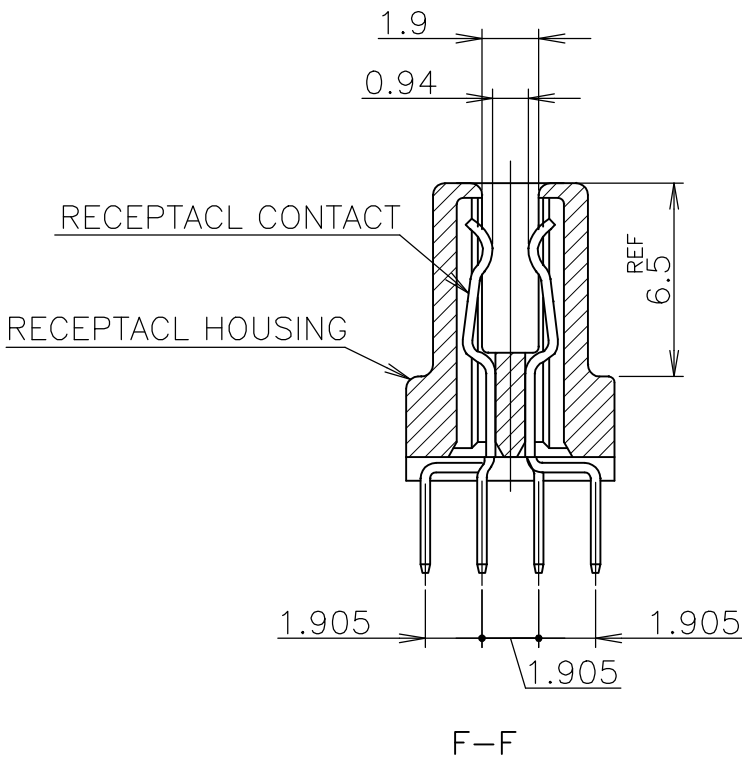
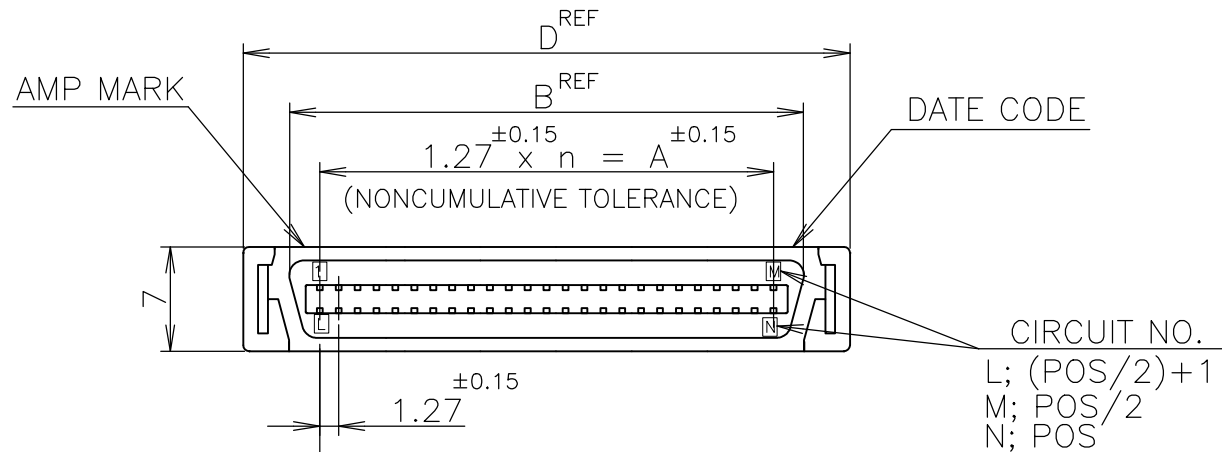
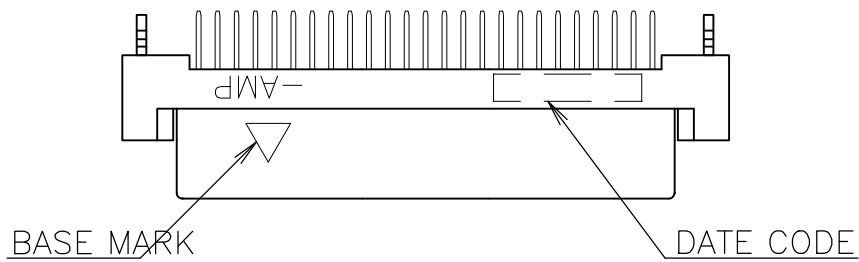
2

1

REVISIONS					
P	LTR	DESCRIPTION	DATE	DWN	APVD
	C	REVISED PER ECO-17-008763	22JAN2018	RG	SH

D

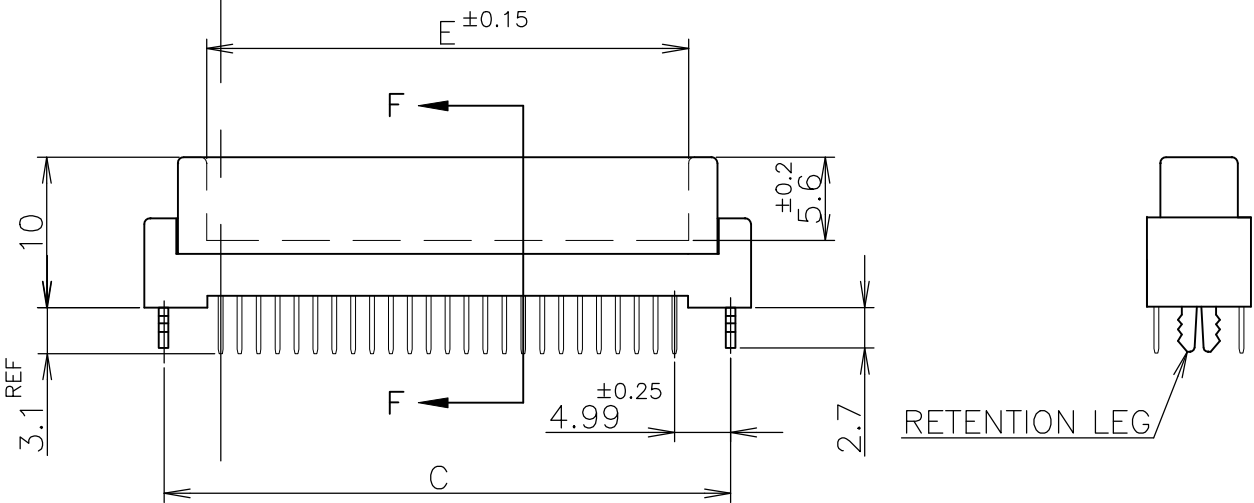
D



- 1 NUMBER "n" IS COUNTED FROM [DATUM]
(CIRCUIT NO.1 IS "AMP" MARK SIDE.)
2 MATERIAL: HOUSING, 66 NYLON (GF) UL 94V-0, BLACK.
: CONTACT, PHOSPHOR BRONZE.
: RETENTION LEG; BRASS.
3 FINISH: CONTACT; Au AT CONTACT AREA (SEE TABLE),
TIN AT TINE, OVER Ni.
4 P.C. BOARD THK MUST BE 1.6 ±0.15 FOR CARD EDGE CONNECTOR

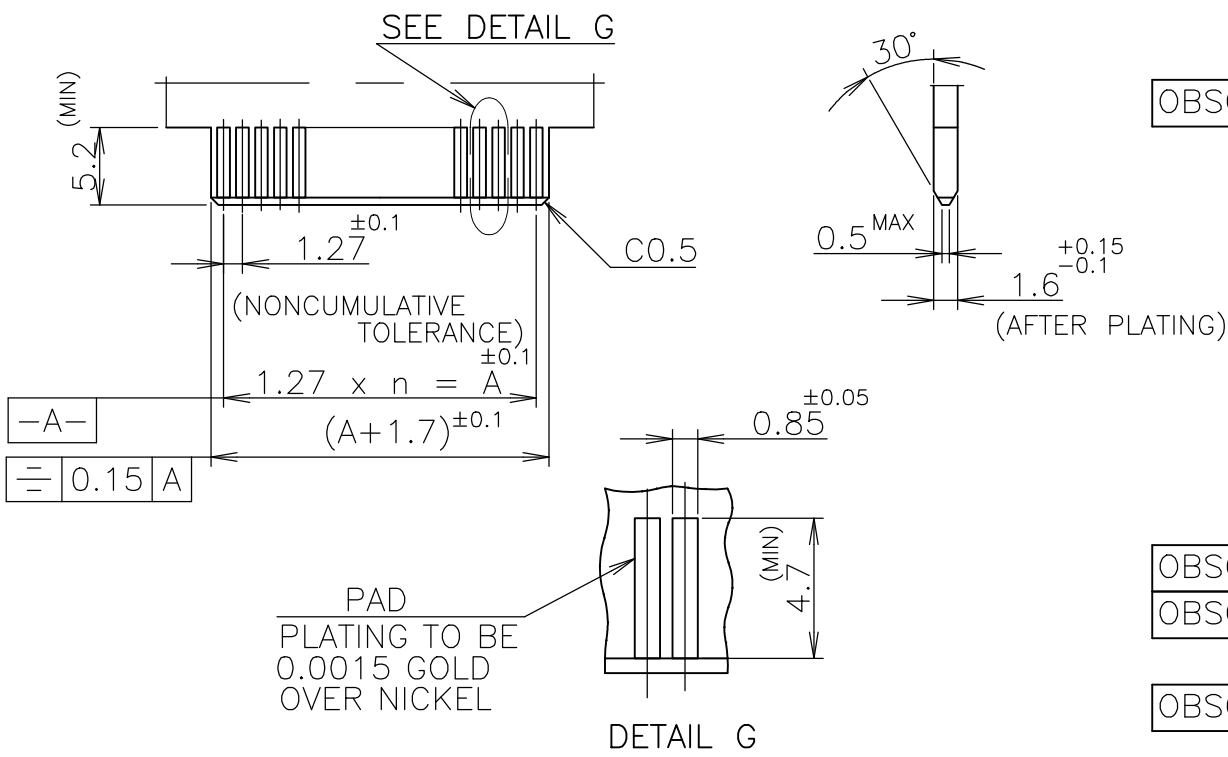
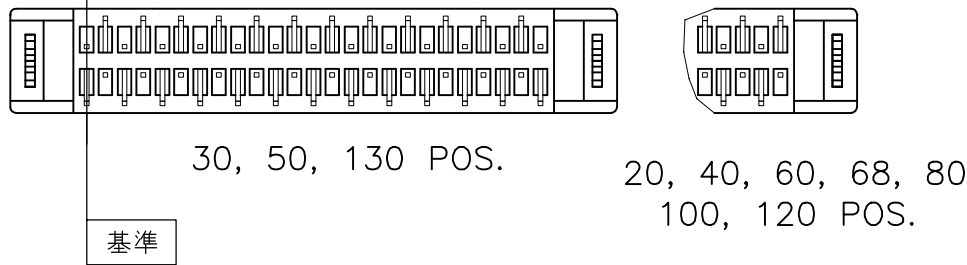
C

C



B

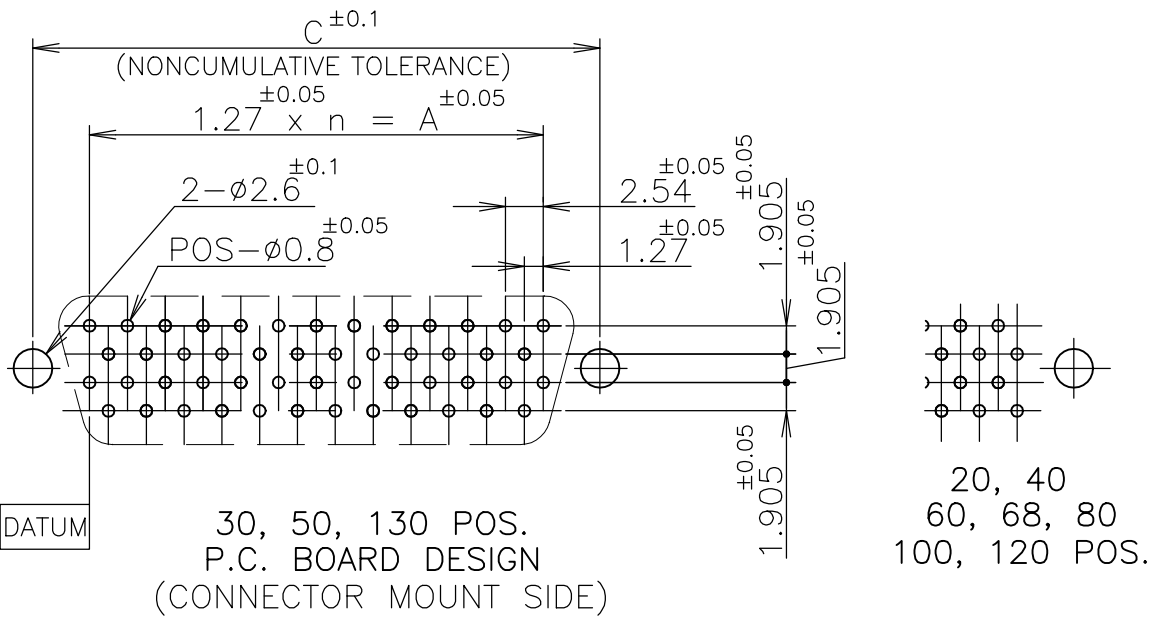
B



RECOMMENDED P.C. BOARD DIMMENSIONS.

A

A



LEAD FREE

GENERAL TOLERANCE
10 ≥ : ±0.2
30 ≥ > 10: ±0.25
100 ≥ > 30: ±0.3
ANGLES: ±3°

OBSOLETE	6—	—2			130	64	81.28	86.82	91.25	93.90	83.18	
	6—	—1			120	59	74.93	80.47	84.90	87.55	76.83	
OBSOLETE	6—	—0			100	49	62.23	67.77	72.20	74.85	64.13	
OBSOLETE	5—	—9			80	39	49.53	55.07	59.50	62.15	51.43	
	5—	—8			68	33	41.91	47.45	51.88	54.53	43.81	
	5—	—7			60	29	36.83	42.37	46.80	49.45	38.73	
	5—	—6			50	24	30.48	36.02	40.45	43.10	32.38	
	5—	—5			40	19	24.13	29.67	34.10	36.75	26.03	
	5—	—3			30	14	17.78	23.32	27.75	30.40	19.68	
	5—	—1		0.00076	20	9	11.43	16.97	21.40	24.05	13.33	
	OBSOLETE	4—	—2			130	64	81.28	86.82	91.25	93.90	83.18
		4—	—1			120	59	74.93	80.47	84.90	87.55	76.83
4—		—0			100	49	62.23	67.77	72.20	74.85	64.13	
3—		—9			80	39	49.53	55.07	59.50	62.15	51.43	
3—		—8			68	33	41.91	47.45	51.88	54.53	43.81	
3—		—7			60	29	36.83	42.37	46.80	49.45	38.73	
3—		—6			50	24	30.48	36.02	40.45	43.10	32.38	
3—		—5			40	19	24.13	29.67	34.10	36.75	26.03	
3—		—3			30	14	17.78	23.32	27.75	30.40	19.68	
3—	—1		0.0005	20	9	11.43	16.97	21.40	24.05	13.33		
OBSOLETE	1—	—2			130	64	81.28	86.82	91.25	93.90	83.18	
OBSOLETE	1—	—1			120	59	74.93	80.47	84.90	87.55	76.83	
	1—	—0			100	49	62.23	67.77	72.20	74.85	64.13	
OBSOLETE		—9			80	39	49.53	55.07	59.50	62.15	51.43	
		—8			68	33	41.91	47.45	51.88	54.53	43.81	
		—7			60	29	36.83	42.37	46.80	49.45	38.73	
		—6			50	24	30.48	36.02	40.45	43.10	32.38	
		—5			40	19	24.13	29.67	34.10	36.75	26.03	
		—3			30	14	17.78	23.32	27.75	30.40	19.68	
		5175475—1		0.0002	20	9	11.43	16.97	21.40	24.05	13.33	
		PART NO.		Au PLATE	POS.	n	A	B	C	D	E	

THIS DRAWING IS A CONTROLLED DOCUMENT.

DIMENSIONS:
mm

TOLERANCES UNLESS OTHERWISE SPECIFIED:
0 PLC ±
1 PLC ±
2 PLC ±
3 PLC ±
4 PLC ±
ANGLES ±

MATERIAL

FINISH

DWN
Julyee Zhu
20AUG2004

CHK
Steven Yao
20AUG2004

APVD
Ikuo Enomoto
20AUG2004

PRODUCT SPEC
108-60038

APPLICATION SPEC

WEIGHT
0.000000

CUSTOMER DRAWING

TE Connectivity Ltd.

AMP CHAMP .050 CONNECTOR(B-T-B)
RECEPTACLE CONNECTOR
VERTICAL WITH RETENTION LEG

SIZE
A2

CAGE CODE
00779

DRAWING NO.
5175475

RESTRICTED TO

SCALE
NTS

SHEET
1 of 1

REV
C

Mouser Electronics

Authorized Distributor

Click to View Pricing, Inventory, Delivery & Lifecycle Information:

[TE Connectivity:](#)

[5-5175475-6](#)