

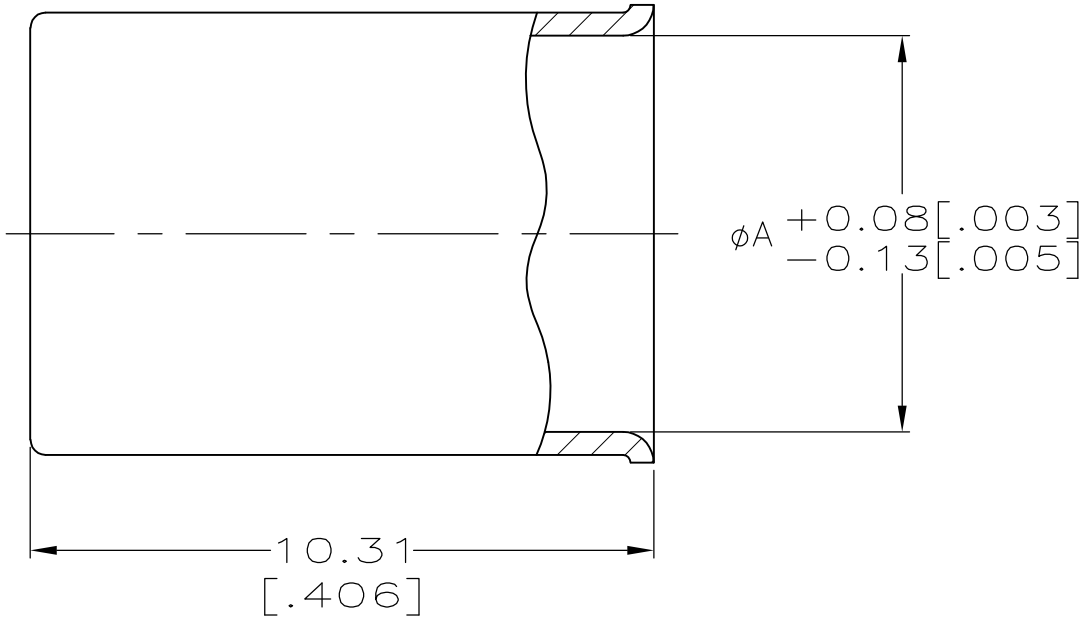
4

3

2

1

LOC	DIST	REVISIONS				
AJ	16	P	LTR	DESCRIPTION	DATE	APVD
			AJ2	REVISED PER ECO-10-008433	24MAY10	HMR KW



1. COPPER ALLOY
- 2

TIN-LEAD PLATE PER ASTM-B-545, 2.54  $\mu\text{m}$  [.000100] MIN THICKNESS, WITH SUPPLEMENTAL ANTI FRETTING LUBRICANT.
- 3

SILVER PLATE PER QQ-S-365, 5.08  $\mu\text{m}$  [.000200] MIN THICKNESS
- 4

SEE SEPARATE RESTRICTED CUSTOMER DRAWING FOR THIS PART NUMBER
- 5

MATTE TIN PLATE 2.54  $\mu\text{m}$  [.000100] MINIMUM THICKNESS, WITH SUPPLEMENTAL ANTI FRETTING LUBRICANT
- 6

BRIGHT TIN PLATE 2.54  $\mu\text{m}$  [.000100] MINIMUM THICKNESS, WITH SUPPLEMENTAL ANTI FRETTING LUBRICANT

4	OBSOLETE	6.35 [.250]	3	50428-9
	OBSOLETE	6.35 [.250]	3	50428-8
		6.35 [.250]	2	50428-6
		6.55 [.258]	2	50428-2
		6.55 [.258]	3	50428-1
	ØA		FINISH	PART NUMBER

THIS DRAWING IS A CONTROLLED DOCUMENT.		DWN M.E. COWHER 2-17-92	<div><div></div><div>Tyco Electronics</div></div> <div>Tyco Electronics Corporation Harrisburg, PA 17105-3608</div>		
DIMENSIONS: mm [INCHES]		CHK J.T. LIPPERT 2-25-92			
	TOLERANCES UNLESS OTHERWISE SPECIFIED: 0 PLC $\pm -$ 1 PLC $\pm -$ 2 PLC $\pm 0.38[.015]$ 3 PLC $\pm -$ 4 PLC $\pm -$ ANGLES $\pm -$	APVD M. PHILLIPS 2-25-92	NAME		
		PRODUCT SPEC	FERRULE, HEAVY WALL		
		APPLICATION SPEC			
MATERIAL SEE NOTE 1	FINISH SEE TABLE	WEIGHT -	SIZE A3	CAGE CODE 00779	DRAWING NO C-50428
CUSTOMER DRAWING			SCALE 8:1	SHEET 1 OF 1	REV AJ2

# Mouser Electronics

Authorized Distributor

Click to View Pricing, Inventory, Delivery & Lifecycle Information:

[TE Connectivity:](#)

[9-50428-0](#)