

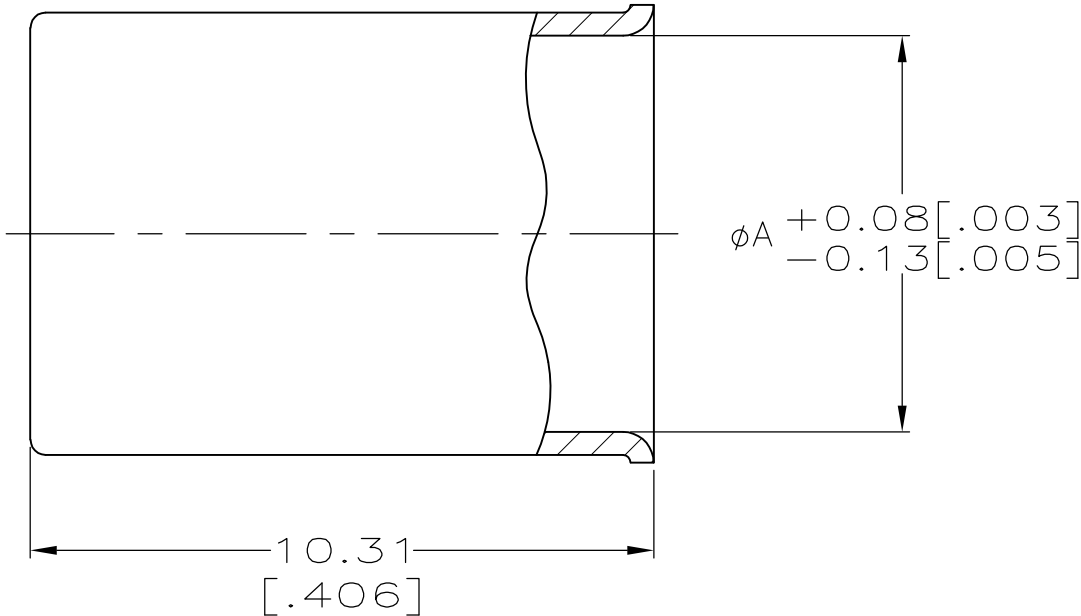
4

3

2

1

LOC	DIST	REVISIONS				
AJ	16	P	LTR	DESCRIPTION	DATE	APVD
			AJ2	REVISED PER ECO-10-008433	24MAY10	HMR KW



1. COPPER ALLOY

- 2

TIN-LEAD PLATE PER ASTM-B-545, 2.54 μm [.000100] MIN THICKNESS, WITH SUPPLEMENTAL ANTI FRETTING LUBRICANT.
- 3


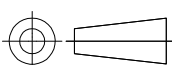
SILVER PLATE PER QQ-S-365, 5.08 μm [.000200] MIN THICKNESS
- 4

SEE SEPARATE RESTRICTED CUSTOMER DRAWING FOR THIS PART NUMBER
- 5

MATTE TIN PLATE 2.54 μm [.000100] MINIMUM THICKNESS, WITH SUPPLEMENTAL ANTI FRETTING LUBRICANT
- 6

BRIGHT TIN PLATE 2.54 μm [.000100] MINIMUM THICKNESS, WITH SUPPLEMENTAL ANTI FRETTING LUBRICANT

4	OBSOLETE	6.35 [.250]	3	50428-9
	OBSOLETE	6.35 [.250]	3	50428-8
		6.35 [.250]	2	50428-6
		6.55 [.258]	2	50428-2
		6.55 [.258]	3	50428-1
	ØA		FINISH	PART NUMBER

THIS DRAWING IS A CONTROLLED DOCUMENT.		DWN M.E. COWHER 2-17-92	 Tyco Electronics Tyco Electronics Corporation Harrisburg, PA 17105-3608				
DIMENSIONS: mm [INCHES]		CHK J.T. LIPPERT 2-25-92					
	TOLERANCES UNLESS OTHERWISE SPECIFIED: 0 PLC ± - 1 PLC ± - 2 PLC ± 0.38[.015] 3 PLC ± - 4 PLC ± - ANGLES ± -	APVD M. PHILLIPS 2-25-92	NAME FERRULE, HEAVY WALL				
		PRODUCT SPEC —					
		APPLICATION SPEC —					
		WEIGHT —					
MATERIAL SEE NOTE 1	FINISH SEE TABLE	SIZE A3		CAGE CODE 00779	DRAWING NO C-50428	RESTRICTED TO —	
CUSTOMER DRAWING					SCALE 8:1	SHEET 1 OF 1	REV AJ2

Mouser Electronics

Authorized Distributor

Click to View Pricing, Inventory, Delivery & Lifecycle Information:

[TE Connectivity:](#)

[50428-2](#)