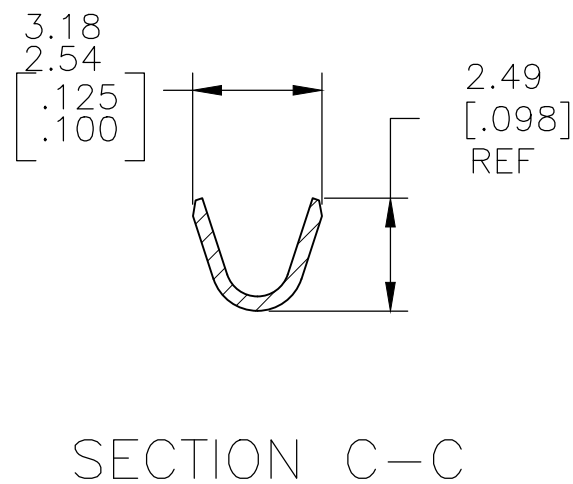
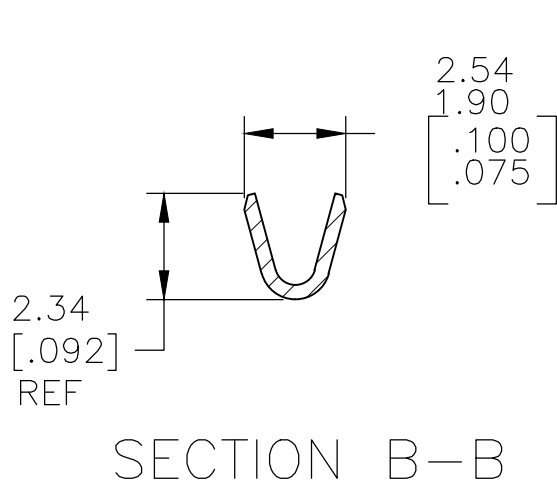
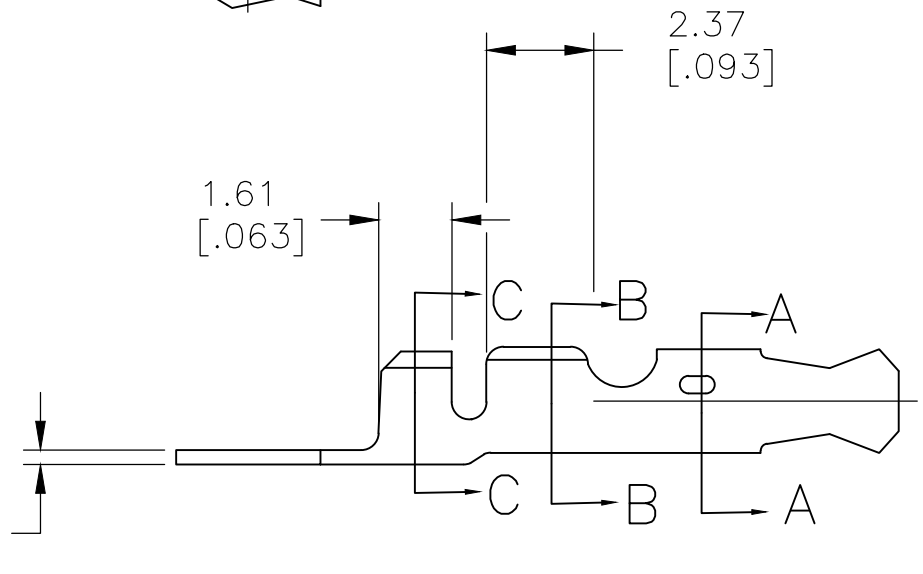
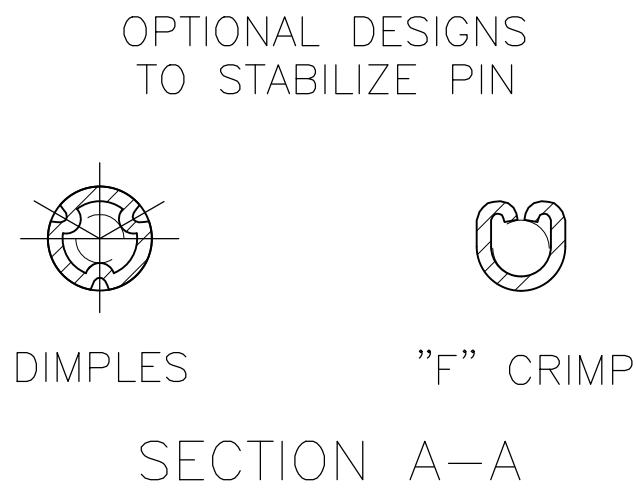
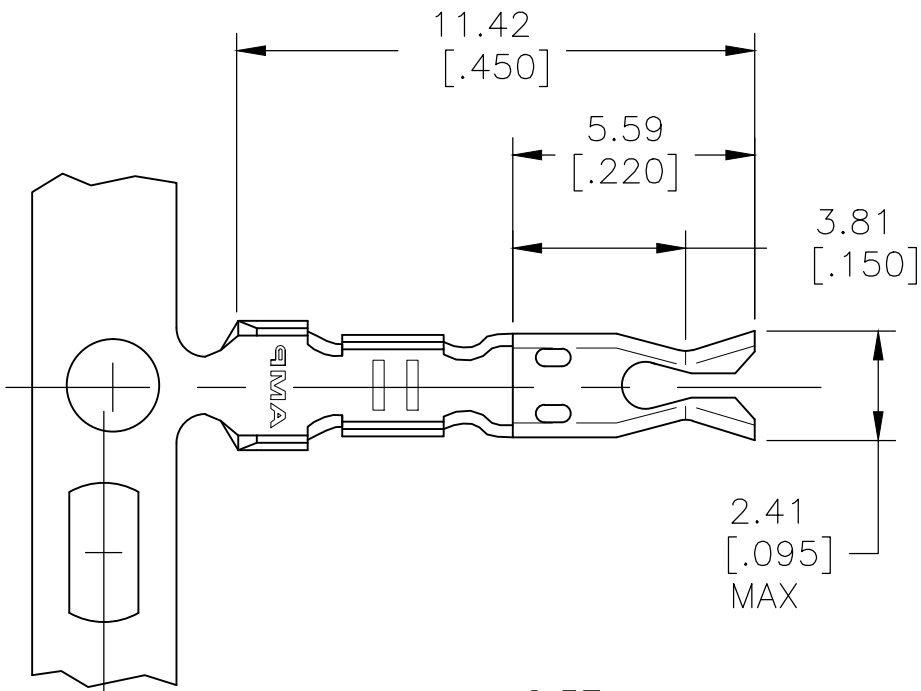


REVISIONS					
P	LTR	DESCRIPTION	DATE	DWN	APVD
	AZ2	REVISED PER ECR-15-016346	09MAY2016	NK	LP



- 1 CONTINUOUS STRIP ON REELS ON 7.37[.290] CENTERS
- 2 WIRE SIZE IS 0.2 – 0.5 mm2 [#24 – #20 AWG]
- 3 INSULATION RANGE IS 1.22 – 1.80 [.048 – .071] DIA
- 4 CONTACT ACCEPTS 1.02±.03[.040±.001] DIA PIN

	REVERSE REEL	H04 PHOS BRONZE – SILVER PL	42428-8
OBSOLETE	REVERSE REEL	H04 PHOS BRONZE – UNPLATED	42428-6
	REVERSE REEL	H04 PHOS BRONZE – TIN PL	42428-5
OBSOLETE	--	H04 PHOS BRONZE – TIN PL	42428-2
REMARKS		MATERIAL & FINISH	PART NO

THIS DRAWING IS A CONTROLLED DOCUMENT.

DIMENSIONS:
mm [INCHES]

MATERIAL
SEE TABLE

TOLERANCES UNLESS
OTHERWISE SPECIFIED:

0 PLC ± -
1 PLC ± -
2 PLC ± 0.38[.015]
3 PLC ± -
4 PLC ± -
ANGLES ± 5°
FINISH
SEE TABLE

DWN
jr_ruth
18DEC07

CHK
DON DECKER
18DEC07

APVD
DON DECKER
18DEC07

PRODUCT SPEC
—

APPLICATION SPEC
114-2083

WEIGHT

CUSTOMER DRAWING

TE Connectivity

NAME
RECEPTACLE, PIN, 1.02[.040] DIA

SIZE
A3

CAGE CODE
00779

DRAWING NO
C-42428

RESTRICTED TO
—

SCALE
6:1

SHEET
1 OF 1

REV
AZ2

Mouser Electronics

Authorized Distributor

Click to View Pricing, Inventory, Delivery & Lifecycle Information:

[TE Connectivity:](#)

[42428-5 \(CUT STRIP\)](#) [42428-5 \(MOUSER REEL\)](#)