

THIS DRAWING IS UNPUBLISHED.

RELEASED FOR PUBLICATION

-,-

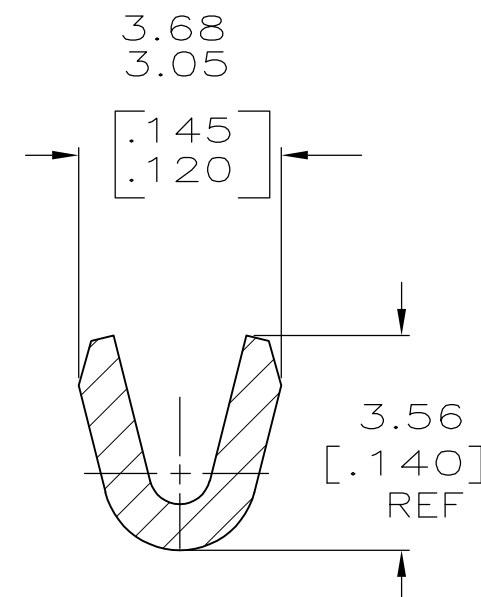
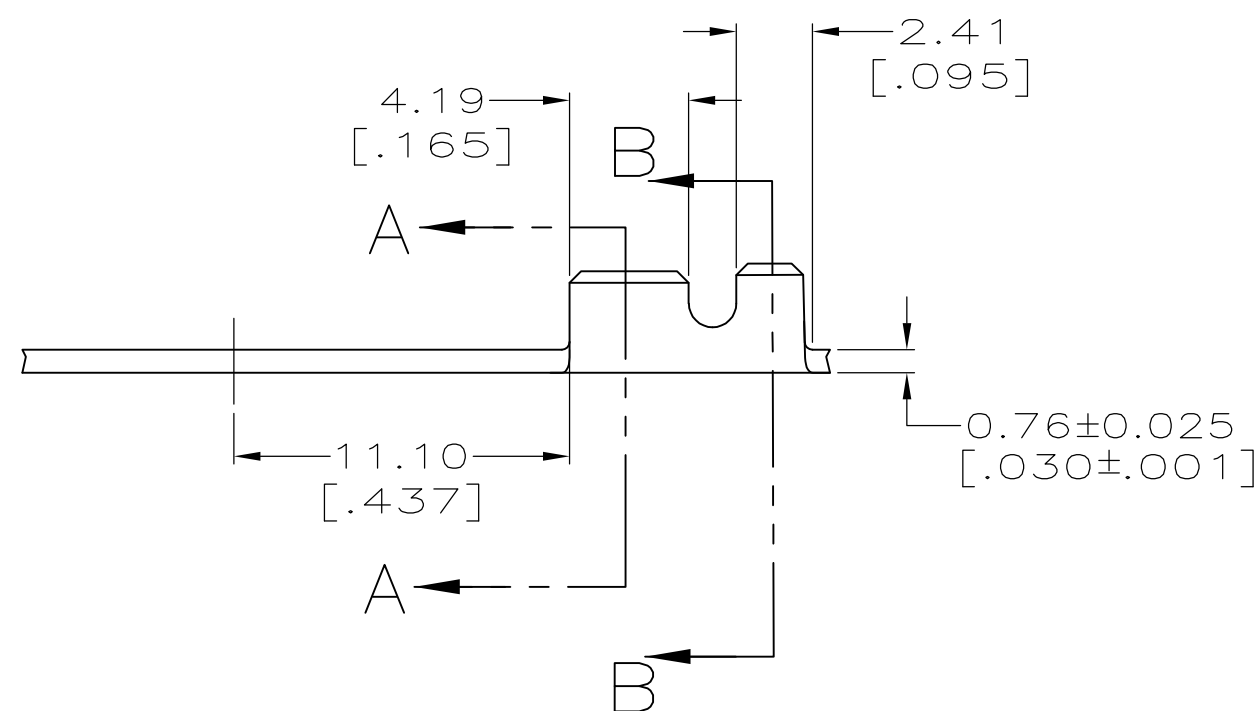
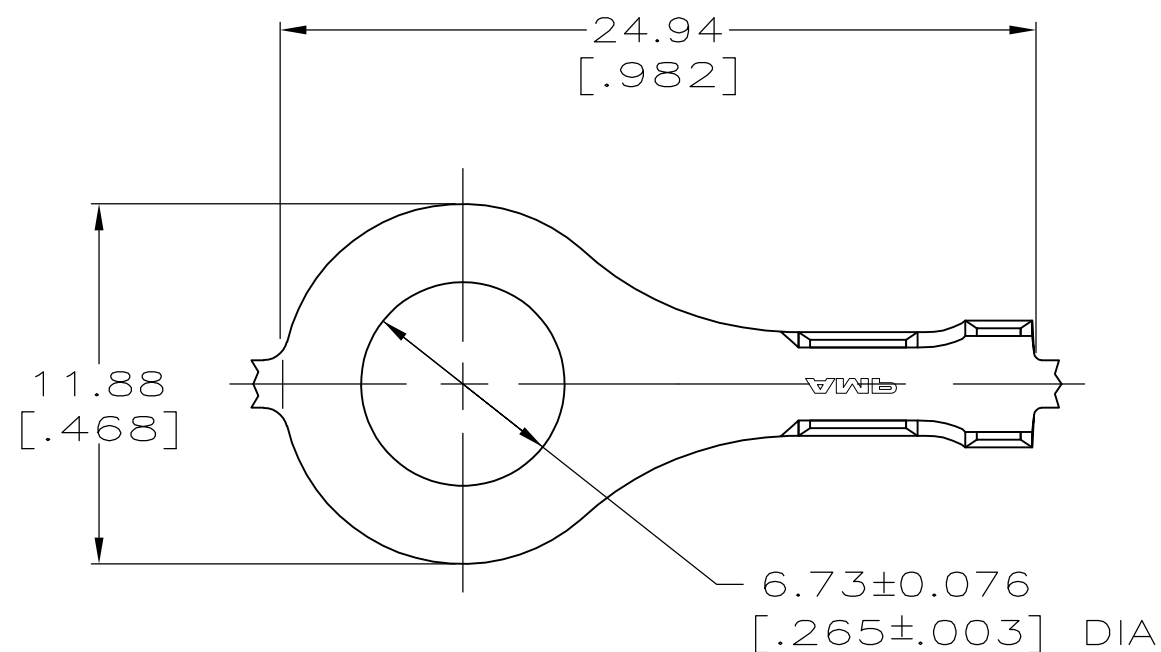
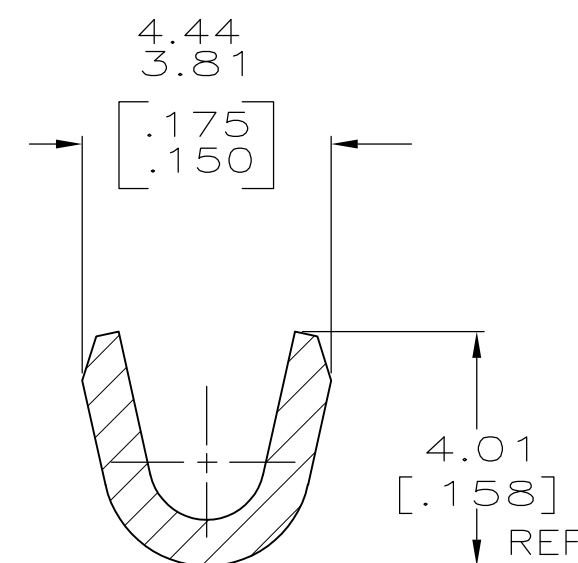


COPYRIGHT - By -

ALL RIGHTS RESERVED.

REVISIONS

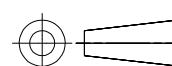
P	LTR	DESCRIPTION	DATE	DWN	APVD
	K1	REVISED PER ECR-17-001421	03FEB2017	NK	FV

SECTION A-A
SCALE 8:1SECTION B-B
SCALE 8:1

- 1 CONTINUOUS STRIP ON REELS AT A FEED OF 27.68 ± 0.13 [$1.090 \pm .005$].
- 2 WIRE SIZE IS [#22-#18] AWG.
- 3 INSULATION RANGE IS 1.78-2.54 [$.070-.100$] DIA.
- 4 REELED WITH INTERLEAVING PAPER.

4	41711-2
	41711
	PART NO.

THIS DRAWING IS A CONTROLLED DOCUMENT.

DIMENSIONS:
mm [INCHES]

MATERIAL

082 BRASS

TOLERANCES UNLESS
OTHERWISE SPECIFIED:

0 PLC	± -
1 PLC	± -
2 PLC	± 0.38 [.015]
3 PLC	± -
4 PLC	± -
ANGLES	± -

FINISH

TIN

DWN JR RUTH 10/5/98

CHK MS FEHER 10/5/98

APVD J DUNCAN 10/5/98

PRODUCT SPEC

-

APPLICATION SPEC

-

WEIGHT 0.000000

CUSTOMER DRAWING



TE Connectivity

NAME

TERMINAL, RING

SIZE

CAGE CODE

DRAWING NO

RESTRICTED TO

A3

00779

C-41711

-

SCALE 4:1

SHEET

1 OF 1

REV

K1

Mouser Electronics

Authorized Distributor

Click to View Pricing, Inventory, Delivery & Lifecycle Information:

[TE Connectivity:](#)

[41711 \(Cut Strip\)](#)