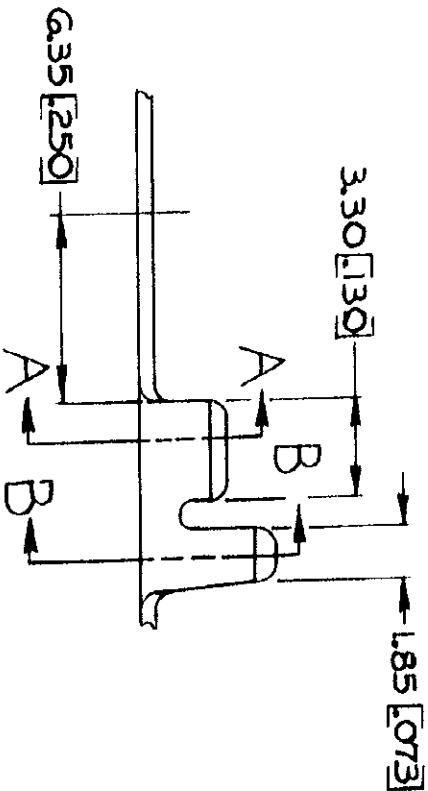
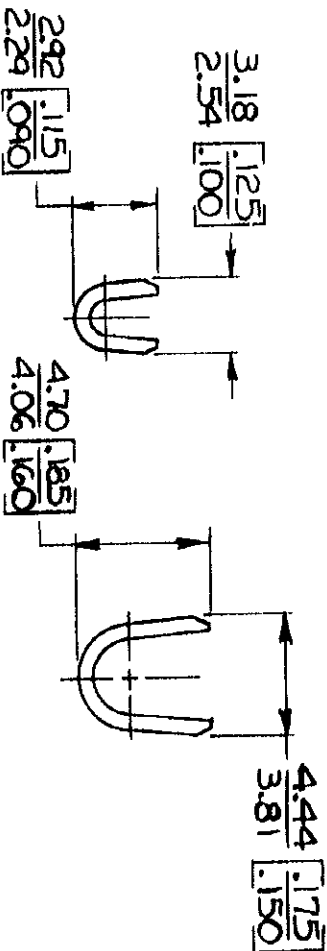
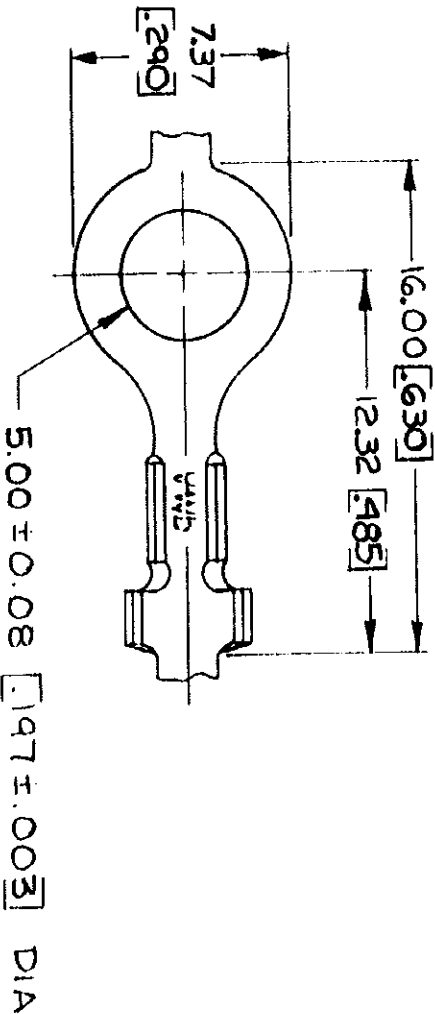


© COPYRIGHT 1964 BY AMP INCORPORATED, HARRISBURG, PA.
ALL INTERNATIONAL RIGHTS RESERVED. AMP INCORPORATED PRODUCTS
COVERED BY U. S. AND FOREIGN PATENTS AND/OR PATENTS PENDING.

REVISIONS				
P	F	ZONE	DESCRIPTION	DATE
		LTR		APPROVED
		6	REDRAWN & REVISED	4-3-94
				6/22/98



1. CONTINUOUS STRIP ON REELS
2. DIMENSIONS IN BRACKETS ARE IN INCHES.

SECT A-A SECT B-B

STUD SIZE		WIRE RANGE	INSULATION RANGE	FINISH	MATERIAL	PART NO
# 10		02-0.6 mm ² [24-20]	203-2.54 [80-100]	TIN	0.5. [020] BRASS	41582
UNLESS OTHERWISE SPECIFIED DIMENSIONS ARE IN MILLIMETERS TOLERANCES ON: DECIMALS ±0.3 [0.5] ANGLES ±1°						
CONTRACT NO				NAME		
DB				AMP INCORPORATED		
CHK				Harrisburg, Pa.		
MATERIAL				RING		
SEE TABLE				SIZE		
FINISH				CODE IDENT NO		
SEE TABLE				DRAWING NO		
OTHER APPD				SHEET		

METRIC

Mouser Electronics

Authorized Distributor

Click to View Pricing, Inventory, Delivery & Lifecycle Information:

[TE Connectivity:](#)

[41582 \(Mouser Reel\)](#)