

LOC	DIST	REVISIONS					
FT	0	P	LTR	DESCRIPTION	DATE	DWN	APVD
			B	REVISED PER ECO-10-013203	25JUN10	HMR	CR

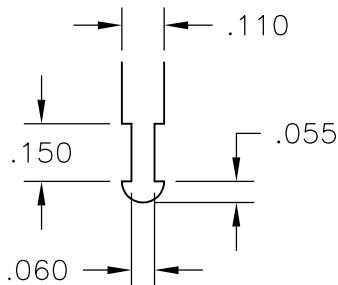
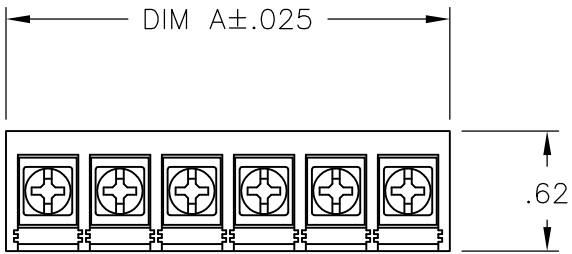
NOTES:

MATERIAL:
HOUSING: THERMOPLASTIC, UL94V-0, BLACK.
TERMINALS: TIN PLATED COPPER ALLOY.
SCREWS: 6-32, STEEL, ZINC PLATED W/ CLR CHROMATE.

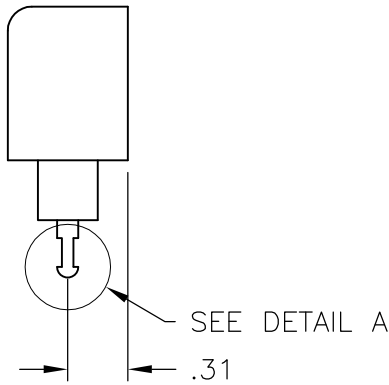
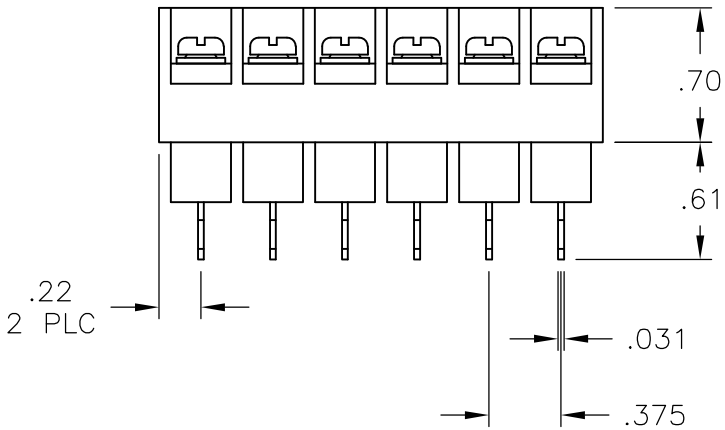
ELECTRICAL:
MAX CURRENT: 20A
OPERATING VOLTAGE: 300V.
WIRE RANGE: 12-22 AWG.

ENVIRONMENTAL:
OPERATING TEMP.: +105° MAX.

1 MARKED WITH WHITE INK.



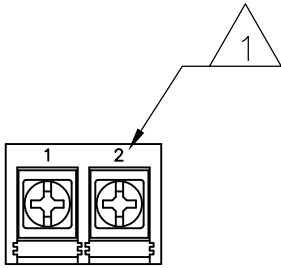
DETAIL A
SCALE 4:1



SEE FIGURE

7.561	20	BC6-T408-20	9-1437662-5
7.186	19	BC6-T408-19	9-1437662-4
6.811	18	BC6-T408-18	9-1438662-3
6.436	17	BC6-T408-17	9-1437662-2
6.061	16	BC6-T408-16	9-1437662-1
5.686	15	BC6-T408-15	9-1437662-0
5.311	14	BC6-T408-14	8-1437662-9
4.936	13	BC6-T408-13	8-1437662-8
4.561	12	BC6-T408-12	8-1437662-7
4.186	11	BC6-T408-11	8-1437662-6
3.811	10	BC6-T408-10	8-1437662-5
3.436	9	BC6-T408-09	8-1437662-4
3.061	8	BC6-T408-08	4-1437662-8
2.686	7	BC6-T408-07	8-1437662-3
2.311	6	BC6-T408-06	8-1437662-2
1.936	5	BC6-T408-05	8-1437662-1
1.561	4	BC6-T408-04	4-1437662-6
1.186	3	BC6-T408-03	8-1437662-0
.811	2	BC6-T408-02-278	4-1437662-5
.811	2	BC6-T408-02	9-1437662-6

DIM. A	NO. OF POS.	CATALOG NUMBER	TE PART NO.
--------	-------------	----------------	-------------



4-1437662-5

THIS DRAWING IS A CONTROLLED DOCUMENT.		DWN S. SCHLEGEL 8/4/04	Tyco Electronics Corporation Harrisburg, PA 17105-3608			
DIMENSIONS: INCHES		CHK S. YODER 8/4/04				
TOLERANCES UNLESS OTHERWISE SPECIFIED:		APVD S. YODER 8/4/04	NAME			
5 PL ± -		PRODUCT SPEC	BC6-T408-XX ASSEMBLY			
6 PL ± -		APPLICATION SPEC	SIZE CAGE CODE DRAWING NO RESTRICTED TO			
7 PL ± .02		WEIGHT -	A3 00779 C-4-1437662-6			
8 PL ± .010		CUSTOMER DRAWING	SCALE NTS SHEET 1 OF 1 REV B			
9 PL ± -						
10 PL ± -						
11 PL ± -						
12 PL ± -						
13 PL ± -						
14 PL ± -						
15 PL ± -						
16 PL ± -						
17 PL ± -						
18 PL ± -						
19 PL ± -						
20 PL ± -						
21 PL ± -						
22 PL ± -						
23 PL ± -						
24 PL ± -						
25 PL ± -						
26 PL ± -						
27 PL ± -						
28 PL ± -						
29 PL ± -						
30 PL ± -						
31 PL ± -						
32 PL ± -						
33 PL ± -						
34 PL ± -						
35 PL ± -						
36 PL ± -						
37 PL ± -						
38 PL ± -						
39 PL ± -						
40 PL ± -						
41 PL ± -						
42 PL ± -						
43 PL ± -						
44 PL ± -						
45 PL ± -						
46 PL ± -						
47 PL ± -						
48 PL ± -						
49 PL ± -						
50 PL ± -						
51 PL ± -						
52 PL ± -						
53 PL ± -						
54 PL ± -						
55 PL ± -						
56 PL ± -						
57 PL ± -						
58 PL ± -						
59 PL ± -						
60 PL ± -						
61 PL ± -						
62 PL ± -						
63 PL ± -						
64 PL ± -						
65 PL ± -						
66 PL ± -						
67 PL ± -						
68 PL ± -						
69 PL ± -						
70 PL ± -						
71 PL ± -						
72 PL ± -						
73 PL ± -						
74 PL ± -						
75 PL ± -						
76 PL ± -						
77 PL ± -						
78 PL ± -						
79 PL ± -						
80 PL ± -						
81 PL ± -						
82 PL ± -						
83 PL ± -						
84 PL ± -						
85 PL ± -						
86 PL ± -						
87 PL ± -						
88 PL ± -						
89 PL ± -						
90 PL ± -						
91 PL ± -						
92 PL ± -						
93 PL ± -						
94 PL ± -						
95 PL ± -						
96 PL ± -						
97 PL ± -						
98 PL ± -						
99 PL ± -						
100 PL ± -						

Mouser Electronics

Authorized Distributor

Click to View Pricing, Inventory, Delivery & Lifecycle Information:

[TE Connectivity:](#)

[BC6-T408-04](#)