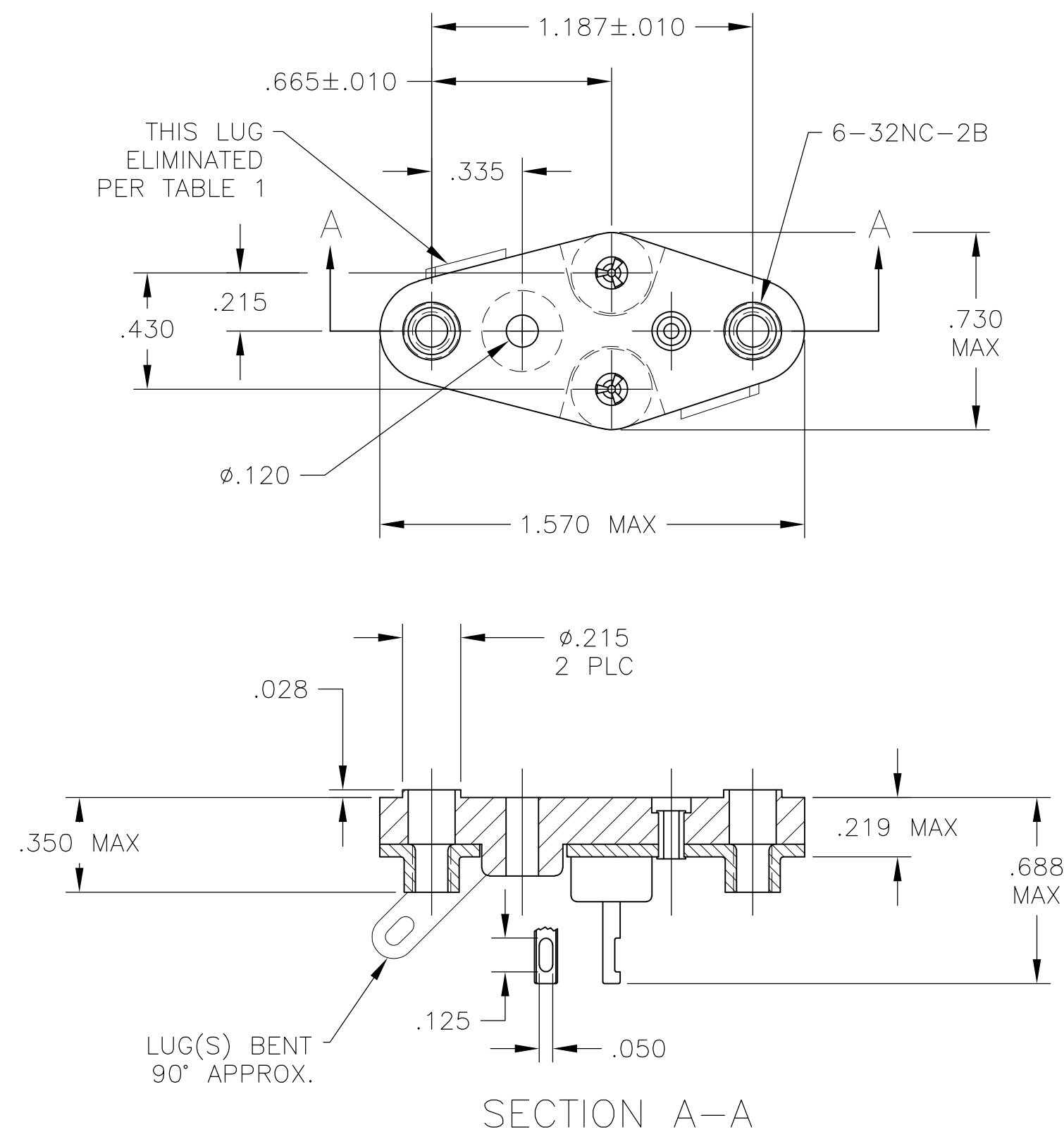
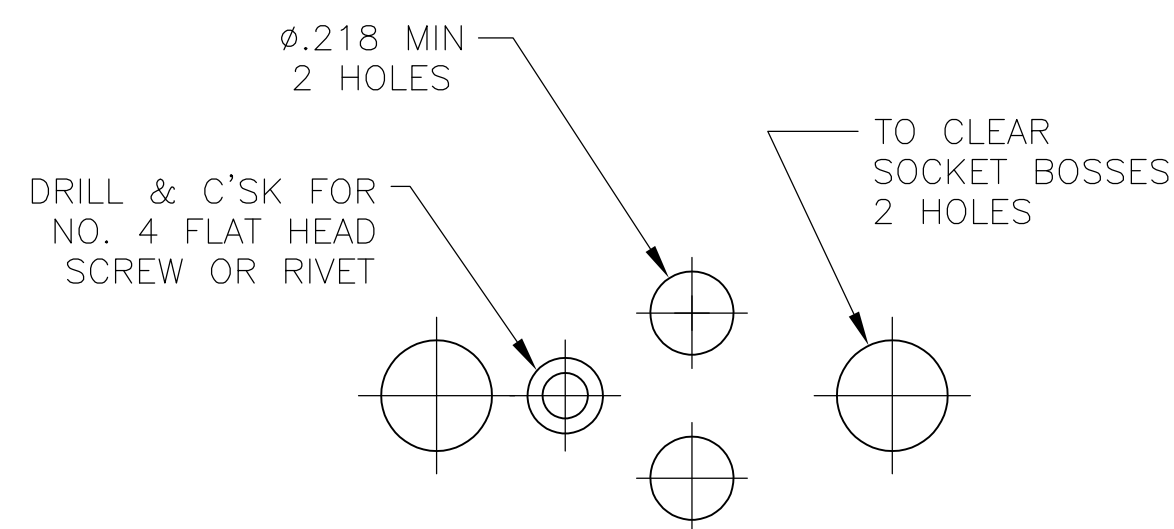


9 OBSOLETE PARTS: OBSOLETE CIS STREAMLINING PER D.RENAUD/D.SINISI





SECTION A-A



RECOMMENDED CHASSIS HOLE LAYOUT

1	.060	DIALLYL PHTHALATE—GREEN OR BLUE	NOTE 5	8080—1G39—LF	9—1437504—9
1	.060	DIALLYL PHTHALATE—GREEN OR BLUE	NOTE 6	8080—1G37—LF	9—1437504—8
1	.060	PHENOLIC—BLACK	NOTE 6	8080—1G36—LF	6—6437504—2
1	.060	DIALLYL PHTHALATE—GREEN OR BLUE	NOTE 8	8080—1G35—LF	9—1437504—7
2	.060	DIALLYL PHTHALATE—GREEN OR BLUE	NOTE 5	8080—1G34—LF	9—1437504—6
2	.060	PHENOLIC—BLACK	NOTE 5	8080—1G33—LF	9—1437504—5
2	.060	PHENOLIC—BLACK	NOTE 6	8080—1G32—LF	9—1437504—4
2	.060	DIALLYL PHTHALATE—GREEN OR BLUE	NOTE 8	8080—1G31—LF	9—1437504—3
1	.040	DIALLYL PHTHALATE—GREEN OR BLUE	NOTE 5	8080—1G25—LF	9—1437504—1
1	.040	DIALLYL PHTHALATE—GREEN OR BLUE	NOTE 8	8080—1G24—LF	9—1437504—0
1	.060	DIALLYL PHTHALATE—GREEN OR BLUE	NOTE 5	8080—1G39	4—1437504—9
1	.060	PHENOLIC—BLACK	NOTE 5	8080—1G38	—
1	.060	DIALLYL PHTHALATE—GREEN OR BLUE	NOTE 6	8080—1G37	4—1437504—8
1	.060	PHENOLIC—BLACK	NOTE 6	8080—1G36	6—1437504—2
1	.060	DIALLYL PHTHALATE—GREEN OR BLUE	NOTE 4	8080—1G35	4—1437504—7
2	.060	DIALLYL PHTHALATE—GREEN OR BLUE	NOTE 5	8080—1G34	4—1437504—6
2	.060	PHENOLIC—BLACK	NOTE 5	8080—1G33	4—1437504—5
2	.060	PHENOLIC—BLACK	NOTE 6	8080—1G32	4—1437504—4
2	.060	DIALLYL PHTHALATE—GREEN OR BLUE	NOTE 4	8080—1G31	4—1437504—3
1	.040	PHENOLIC—BLACK	NOTE 7	8080—1G30	—
1	.040	PHENOLIC—BLACK	NOTE 6	8080—1G29	—
2	.040	PHENOLIC—BLACK	NOTE 7	8080—1G28	—
2	.040	PHENOLIC—BLACK	NOTE 6	8080—1G27	—
1	.040	DIALLYL PHTHALATE—GREEN OR BLUE	NOTE 5	8080—1G25	4—1437504—1
1	.040	DIALLYL PHTHALATE—GREEN OR BLUE	NOTE 4	8080—1G24	4—1437504—0
2	.040	DIALLYL PHTHALATE—GREEN OR BLUE	NOTE 4	8080—1G23	—
LUG QTY (SEE NOTE 3)	LEAD DIA +.003/−.002	INSULATOR MATERIAL	CONTACT PLATING	AUGAT PT. NO.	PART NUMBER

THIS DRAWING IS A CONTROLLED DOCUMENT.		DWN R. BROWN11APR03		 TE Connectivity											
		CHK K. WRIGHT11APR03													
DIMENSIONS: INCHES		TOLERANCES, UNLESS OTHERWISE SPECIFIED:		NAME TRANSISTOR SOCKET											
		0 PLC ± - 1 PLC ± - 2 PLC ± - 3 PLC ± - 4 PLC ± - ANGLES ± -													
MATERIAL -		FINISH -		PRODUCT SPEC -		APPLICATION SPEC -		SIZE A2		CAGE CODE 00779		DRAWING NO C-4-1437504-0		RESTRICTED TO -	
				WEIGHT -											
CUSTOMER DRAWING										SCALE 2:1		SHEET 1 of 1		REV R2	

Mouser Electronics

Authorized Distributor

Click to View Pricing, Inventory, Delivery & Lifecycle Information:

[TE Connectivity:](#)

[8080-1G25-LF](#)