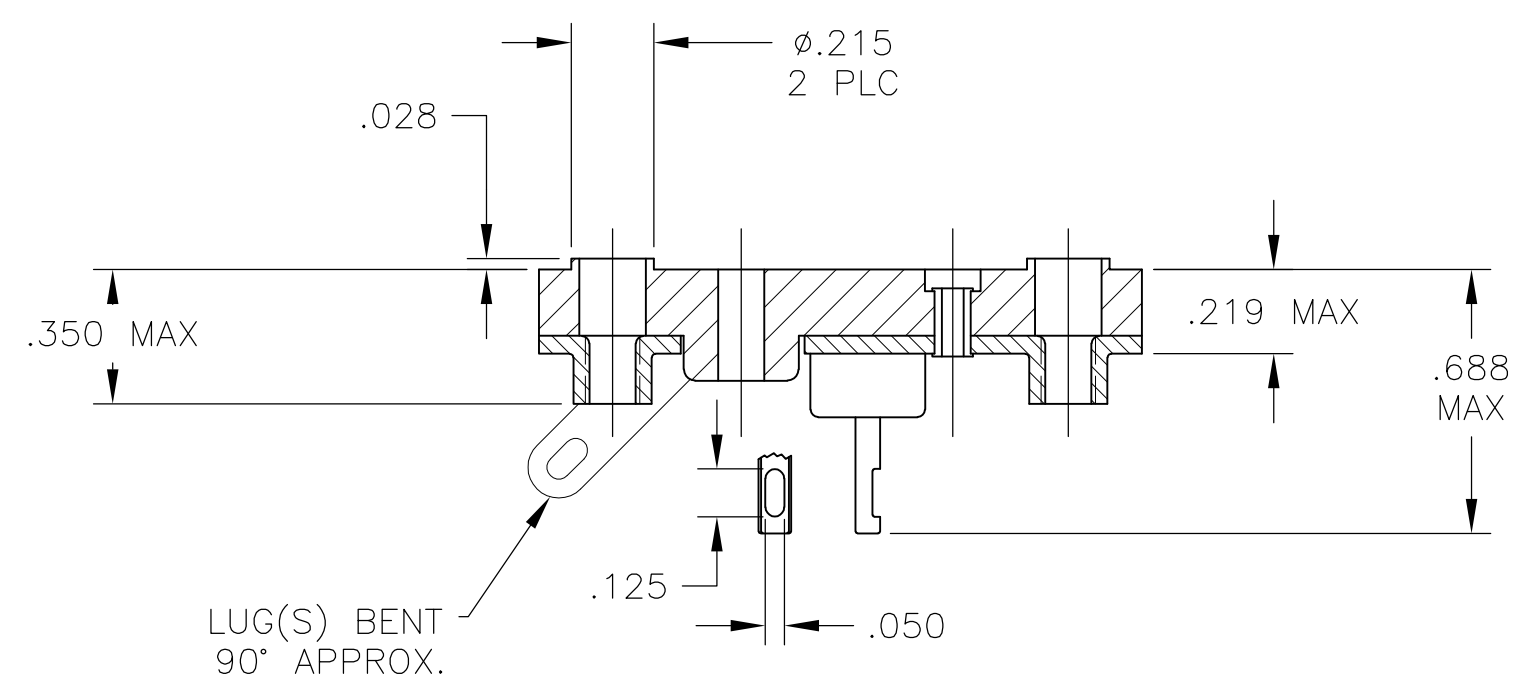
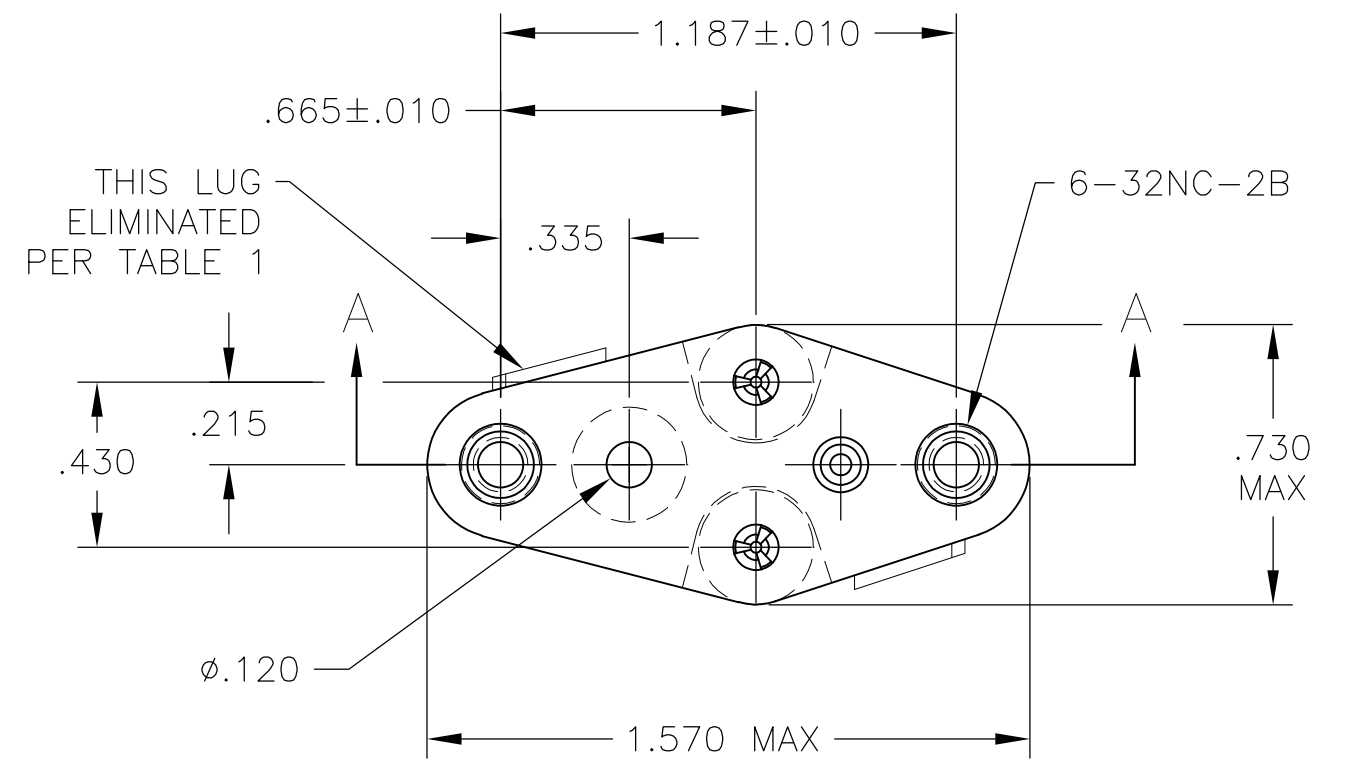


D

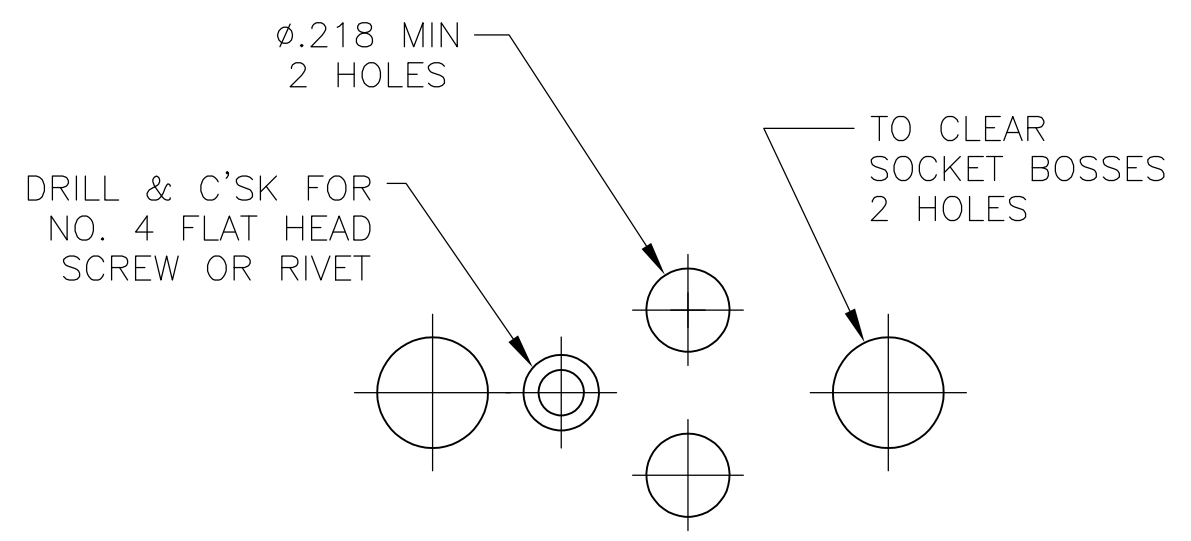
C

B

A



SECTION A-A



RECOMMENDED CHASSIS HOLE LAYOUT

SPECIFICATIONS:

MATERIALS-

INSULATOR: UL94V-0 (SEE TABLE FOR MATERIAL)
CONTACT: BERYLLIUM COPPER (SEE TABLE FOR PLATING)

ELECTRICAL-

CONTACT RESISTANCE: GOLD - 15 MILLIOHMS, PER MIL-STD-12883
TIN- 25 MILLIOHMS MAX
CONTACT RATING: 10 AMPS DC
DIELECTRIC WITHSTANDING VOLTAGE- 1500 VOLTS(RMS)

MECHANICAL-

OPERATIONAL TEMPERATURE: DAP -67F TO +257F
(-55C TO +125C)

NOTES

1. INTERPRET DRAWING PER ASME Y14.5M-1994.
2. THIS ASSEMBLY IS INTENDED FOR USE WITH SEMI-CONDUCTORS PACKAGED WITHIN THE OUTLINE DIMENSIONS OF THE "TO-3".
3. LUG(S) IS AN INTERNAL PART OF SADDLE.
4. .000200 MIN THK TIN-LEAD PLATE OVER .000100 MIN THK COPPER PLATE.
5. .000030 MIN THK GOLD PLATE OVER .000050 MIN THK NICKEL PLATE.
6. .000500 MIN THK SILVER PLATE.
7. .000050 MIN THK GOLD PLATE OVER .000050 MIN THK NICKEL PLATE.
8. .000200 MIN THK MATTE TIN PLATE OVER .000100 MIN THK COPPER PLATE.

9 OBSOLETE PARTS: OBSOLETE CIS STREAMLINING PER D.RENAUD/D.SINISI

OBSOLETE
9

1	.060	DIALLYL PHTHALATE—GREEN OR BLUE	NOTE 5	8080—1G39—LF	9—1437504—9
1	.060	DIALLYL PHTHALATE—GREEN OR BLUE	NOTE 6	8080—1G37—LF	9—1437504—8
1	.060	PHENOLIC—BLACK	NOTE 6	8080—1G36—LF	6—6437504—2
1	.060	DIALLYL PHTHALATE—GREEN OR BLUE	NOTE 8	8080—1G35—LF	9—1437504—7
2	.060	DIALLYL PHTHALATE—GREEN OR BLUE	NOTE 5	8080—1G34—LF	9—1437504—6
2	.060	PHENOLIC—BLACK	NOTE 5	8080—1G33—LF	9—1437504—5
2	.060	PHENOLIC—BLACK	NOTE 6	8080—1G32—LF	9—1437504—4
2	.060	DIALLYL PHTHALATE—GREEN OR BLUE	NOTE 8	8080—1G31—LF	9—1437504—3
1	.040	DIALLYL PHTHALATE—GREEN OR BLUE	NOTE 5	8080—1G25—LF	9—1437504—1
1	.040	DIALLYL PHTHALATE—GREEN OR BLUE	NOTE 8	8080—1G24—LF	9—1437504—0
1	.060	DIALLYL PHTHALATE—GREEN OR BLUE	NOTE 5	8080—1G39	4—1437504—9
1	.060	PHENOLIC—BLACK	NOTE 5	8080—1G38	—
1	.060	DIALLYL PHTHALATE—GREEN OR BLUE	NOTE 6	8080—1G37	4—1437504—8
1	.060	PHENOLIC—BLACK	NOTE 6	8080—1G36	6—1437504—2
1	.060	DIALLYL PHTHALATE—GREEN OR BLUE	NOTE 4	8080—1G35	4—1437504—7
2	.060	DIALLYL PHTHALATE—GREEN OR BLUE	NOTE 5	8080—1G34	4—1437504—6
2	.060	PHENOLIC—BLACK	NOTE 5	8080—1G33	4—1437504—5
2	.060	PHENOLIC—BLACK	NOTE 6	8080—1G32	4—1437504—4
2	.060	DIALLYL PHTHALATE—GREEN OR BLUE	NOTE 4	8080—1G31	4—1437504—3
1	.040	PHENOLIC—BLACK	NOTE 7	8080—1G30	—
1	.040	PHENOLIC—BLACK	NOTE 6	8080—1G29	—
2	.040	PHENOLIC—BLACK	NOTE 7	8080—1G28	—
2	.040	PHENOLIC—BLACK	NOTE 6	8080—1G27	—
1	.040	DIALLYL PHTHALATE—GREEN OR BLUE	NOTE 5	8080—1G25	4—1437504—1
1	.040	DIALLYL PHTHALATE—GREEN OR BLUE	NOTE 4	8080—1G24	4—1437504—0
2	.040	DIALLYL PHTHALATE—GREEN OR BLUE	NOTE 4	8080—1G23	—
LUG QTY (SEE NOTE 3)	LEAD DIA +.003/–.002	INSULATOR MATERIAL	CONTACT PLATING	AUGAT PT. NO.	PART NUMBER

THIS DRAWING IS A CONTROLLED DOCUMENT.		DWN R BROWN 11APR03	TE Connectivity						
DIMENSIONS: INCHES		CHK K WRIGHT 11APR03							
		TOLERANCES UNLESS OTHERWISE SPECIFIED:		NAME TRANSISTOR SOCKET					
		0 PLC ± - 1 PLC ± - 2 PLC ± - 3 PLC ± - 4 PLC ± - ANGLES ± - FINISH							
MATERIAL -		FINISH -		APVD K WRIGHT 11APR03		SIZE A2	CAGE CODE 00779	DRAWING NO C=4-1437504-0	RESTRICTED TO -
CUSTOMER DRAWING				WEIGHT -		SCALE 2:1	SHEET 1 of 1	REV B2	

Mouser Electronics

Authorized Distributor

Click to View Pricing, Inventory, Delivery & Lifecycle Information:

[TE Connectivity:](#)

[8080-1G24](#)