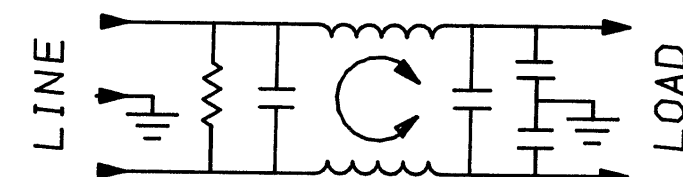
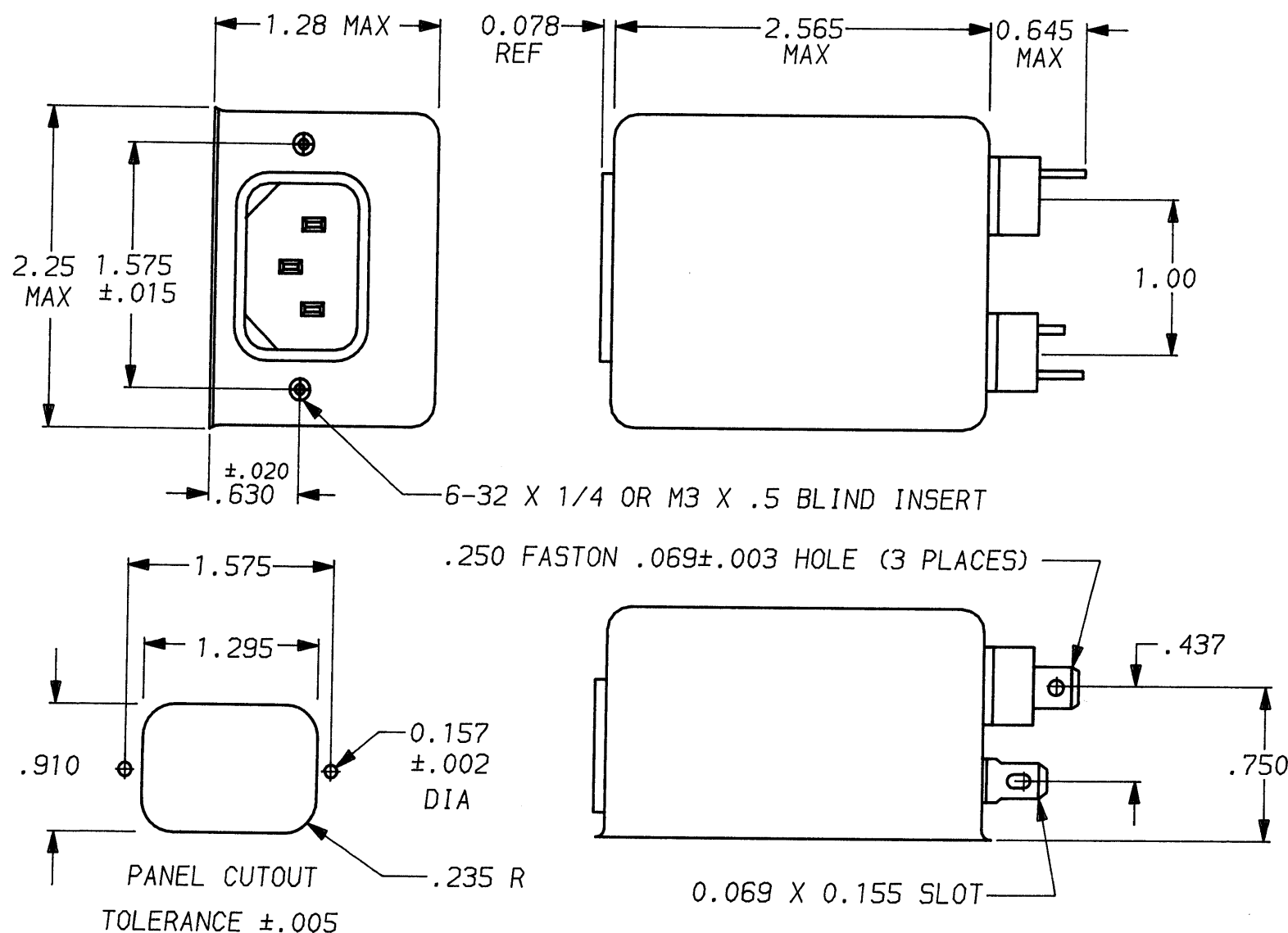


**1 OBSOLETE PARTS: OBSOLETE CIS STREAMLINING
PER D.RENAUD/D.SINISI**



1609028-8	OBSOLETE	1
6609028-8		
1609028-7	OBSOLETE	1
6609028-7		

50n - 50n (MINIMUM) INSERTION LOSS										
FREQUENCY MHz	.15	.3	.5	1	2	5	10	20	30	
COMMON dB	20	28	35	42	48	53	55	55	55	
DIFF. dB	2	2	35	55	65	65	60	50	50	

This document is proprietary to CORCOM INC. and is not to be reproduced nor used for manufacturing purposes except on CORCOM's order or prior written consent.

SAFETY ORGANIZATION(S):

THIS FILTER HAS BEEN FORMALLY RECOGNIZED, CERTIFIED OR APPROVED BY THE LISTED AGENCY. THEREFORE, ALL TEST/REQUIREMENTS SPECIFIED IN THE LATEST REVISION OF THE FOLLOWING AGENCY STANDARDS HAVE BEEN MET:

UL RECOGNIZED
CSA CERTIFIED
VDE APPROVED

UL 1283
CSA 22.2, NO.0,0.4,8
VDE 565-3

OPERATING SPECIFICATIONS:

LINE VOLTAGE/CURRENT:

3 AMP., 120/250 VAC
3 AMP./40°C, 250 VAC

LINE FREQUENCY:

50-60Hz

MAX. CASE RISE @ RATED CURRENT:

40°C

MAX. LEAKAGE CURRENT, EACH

.5 mA at 120V 60 Hz

LINE TO GROUND

1.0 mA at 250V 50 Hz

OPERATING AMBIENT TEMP. RANGE:

-10°C TO +40°C @ RATED CURRENT, I_r

IN AN AMBIENT, T_a, HIGHER THAN 40°C, THE MAXIMUM OPERATING CURRENT, I_o, IS AS FOLLOWS:

$$I_o = I_r \sqrt{\frac{85 - T_a}{45}}$$

RELIABILITY SPECIFICATIONS:

STORAGE TEMPERATURE:

-40°C TO +85°C

HUMIDITY:

21 DAYS @ 40°C 95% RH

CURRENT OVERLOAD TEST:

6 TIMES RATED CURRENT FOR 8 SECONDS

TEST SPECIFICATIONS:

INDUCTANCE:

1.76 mH NOMINAL

CAPACITANCE: (MEASURED @ 1 KHz, 0.25 VAC MAX., 25°C ±1°C)

LINE TO GROUND:

.011μF ±20%

LINE TO LINE:

.203μF ±20%

DISCHARGE RESISTOR

1.5Mn

LINE/GROUND AND LINE/LINE

6000 Mn (MIN) AT 100 VDC

INSULATION RESISTANCE

20°C AND 50% RH

RECOMMENDED RECEIVING INSPECTION HIPOT:

LINE TO GROUND:

2250 VDC FOR 1 MINUTE

LINE TO LINE:

1450 VDC FOR 1 MINUTE

FILTER APPROVAL:

THE BEST WAY TO SELECT AND QUALIFY A FILTER IS FOR YOUR ENGINEERING TO TEST THE UNIT IN YOUR EQUIPMENT.



POWER LINE FILTER

TOLERANCE EXCEPT AS NOTED
DECIMAL: .XXX .XX .X ANGLES
ENGLISH: ±.025 ± 1°
METRIC: ± —
MATERIAL:
AS SUPPLIED
FINISH:
AS SUPPLIED

SCALE	DATE	DRG. NO.	REV.
NTS	9-12-89	3VK7 & 3VK7M	7
DRW. BY TDL	ORIGINATOR CW		

Mouser Electronics

Authorized Distributor

Click to View Pricing, Inventory, Delivery & Lifecycle Information:

[TE Connectivity:](#)

[3VK7M](#)