

LOC	DIST	REVISIONS				
CM	53	P	LTR	DESCRIPTION	DATE	DWN
						APVD
		AA		REVISED PER ECR-16-002894	24MAR2016	BW

- 1

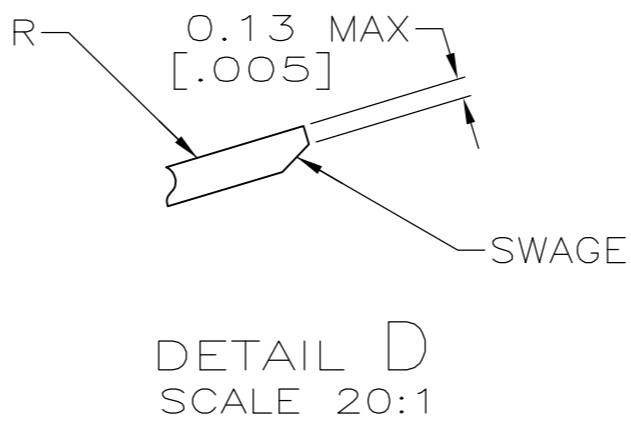
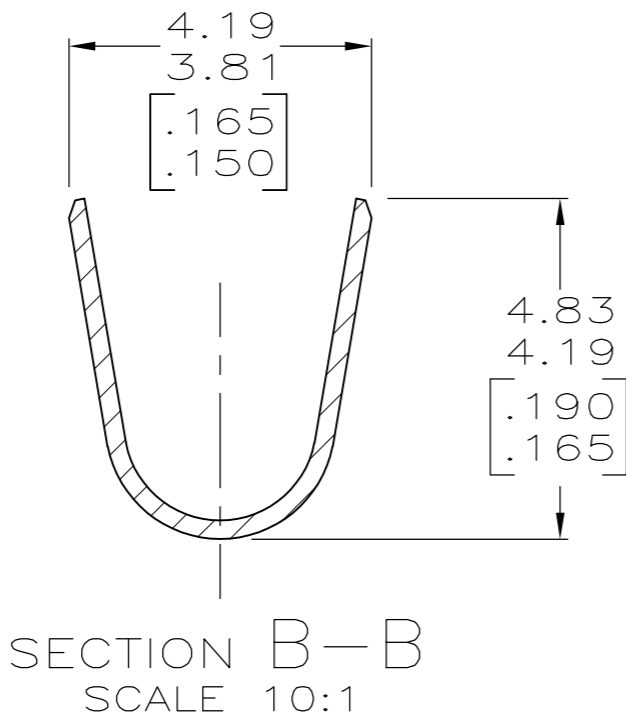
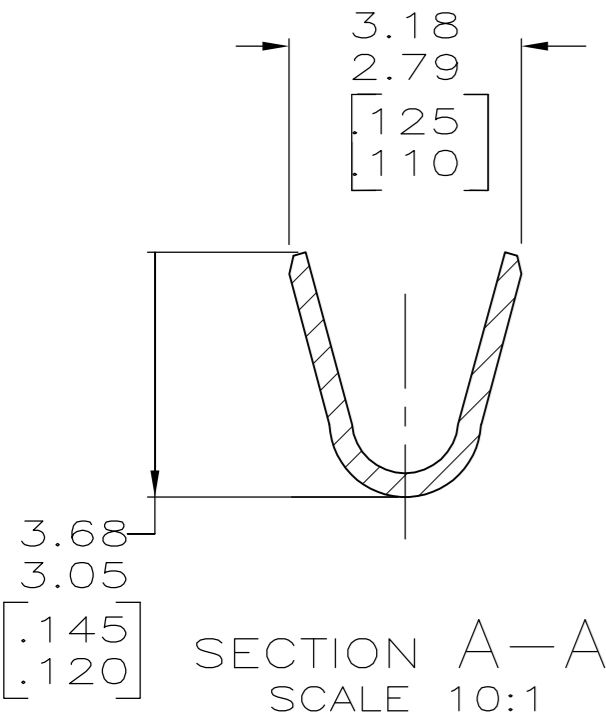
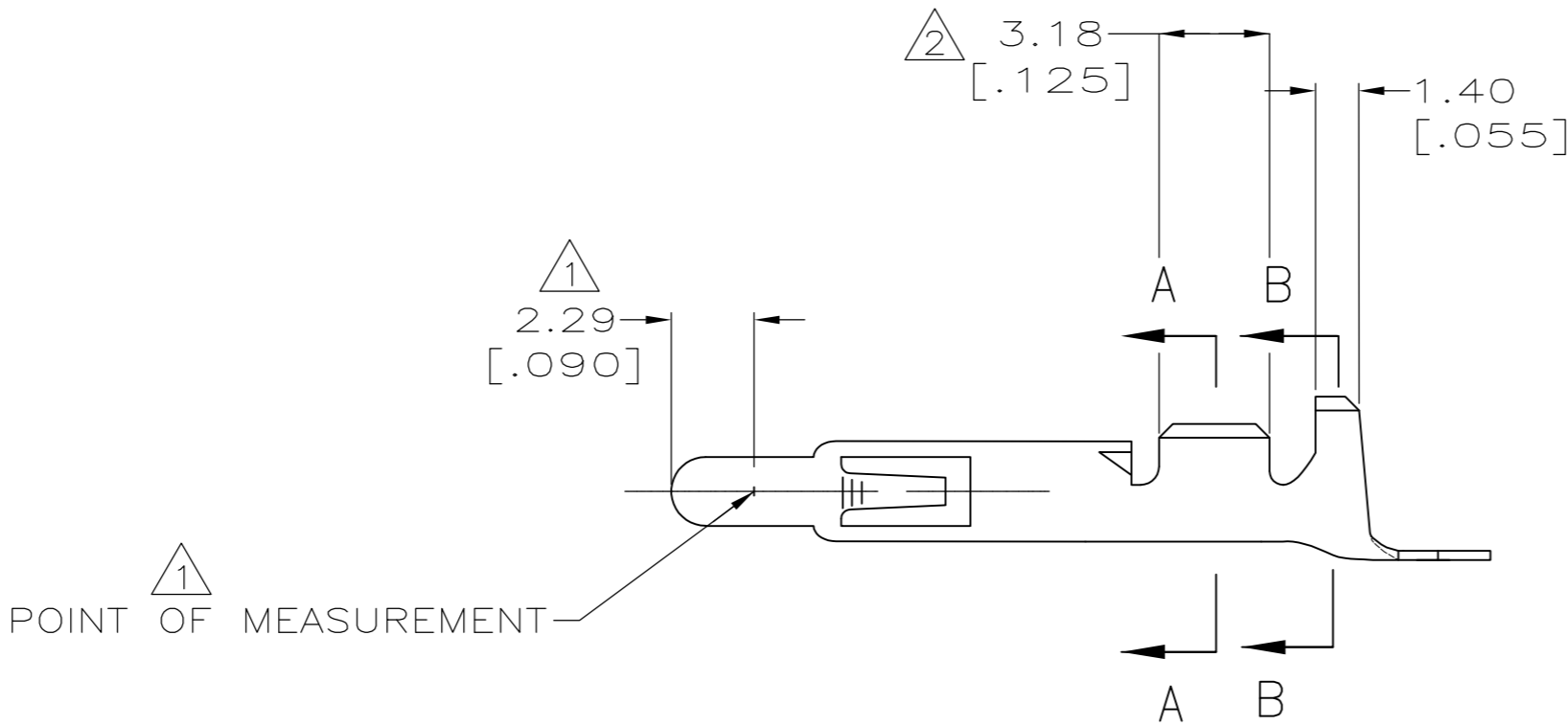
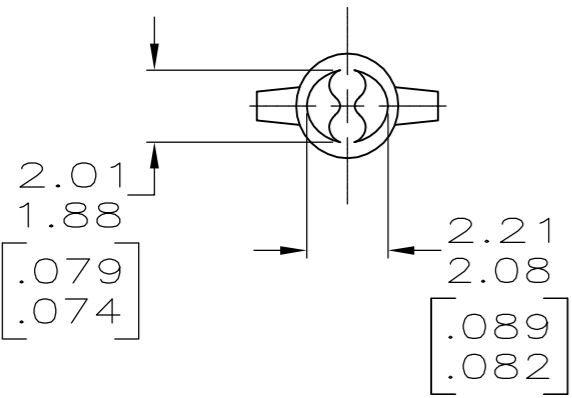
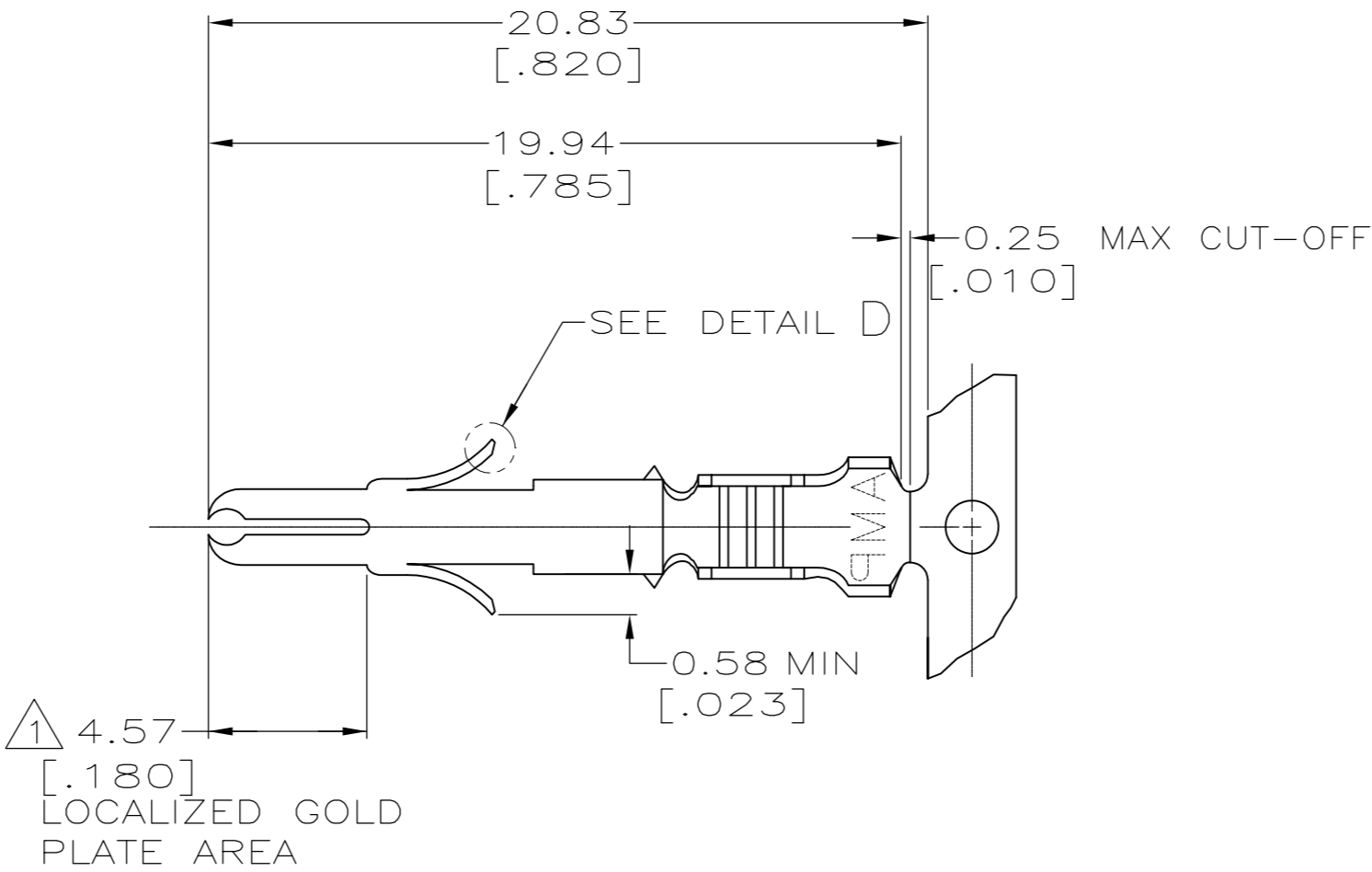
PLATED WITH 0.00076 [.000030] GOLD,
OVER 0.00127 [.000050] NICKEL UNDERPLATE.
- 2

PLATED INTERNALLY WITH 0.00076 [.000030] GOLD.
- 3

DIMENSIONS IN BRACKETS ARE IN INCHES.
- 4

PRELIMINARY, NOT FOR PRODUCTION.
- 5

INSULATION RANGE: 1.52-3.30 [.060-.130] DIA.



4	-	0.31 [.012] BE CU	PRE-TIN	350687-9
	350705-7	0.31 [.012] BRASS	GOLD 1	350687-7
4	-	0.31 [.012] PH BRZ	GOLD 1	350687-5
	350705-2	0.31 [.012] BRASS	GOLD 1 2	350687-2
	350705-1	0.31 [.012] BRASS	PRE-TIN	350687-1
LOOSE PIECE (REF)		MATERIAL	FINISH	PART NUMBER

THIS DRAWING IS A CONTROLLED DOCUMENT.		DWN K. WHITAKER 12-MAY-2000	TE Connectivity		
DIMENSIONS: mm [INCHES]		CHK K. COBLE 12-MAY-2000			
		APVD K. COBLE 12-MAY-2000	NAME PIN,		
TOLERANCES UNLESS OTHERWISE SPECIFIED: 0 PLC ± - 1 PLC ± - 2 PLC ± 0.13 [.005] 3 PLC ± - 4 PLC ± - ANGLES ± 0°30'		PRODUCT SPEC	UNIVERSAL MATE-N-LOK™		
MATERIAL		APPLICATION SPEC	SIZE	CAGE CODE	DRAWING NO
FINISH		WEIGHT	A2	00779	C=350687
WIRE RANGE 20-14 AWG		CUSTOMER DRAWING	SCALE 5:1	SHEET 1 of 1	REV AA

Mouser Electronics

Authorized Distributor

Click to View Pricing, Inventory, Delivery & Lifecycle Information:

[TE Connectivity:](#)

[350687-2 \(Loose Piece\)](#)