

THIS DRAWING IS UNPUBLISHED.

RELEASED FOR PUBLICATION

ALL RIGHTS RESERVED.

© COPYRIGHT - By -

REVISIONS

P	LTR	DESCRIPTION	DATE	DWN	APVD
	AD4	REVISED PER ECR-18-011987	09AUG2018	BDA	SF

4.19 REF
[.165]20.07 REF
[.790]0.25 [.010]
MAX CUTOFF

SEE DETAIL C

0.58
[.023]
MIN
(2 PLC)2.06
1.98
Ø
[.081]
[.078]19.30
[.760]
REF

1.40 [.055]

A

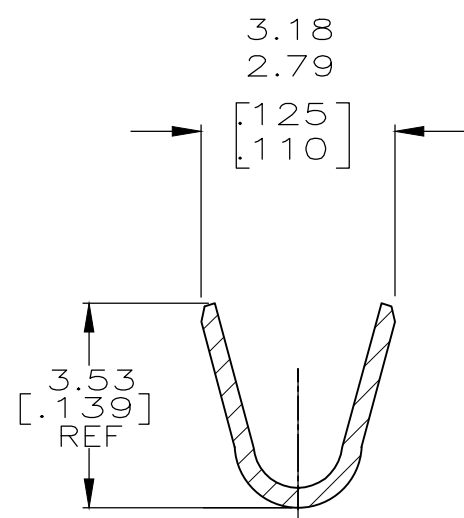
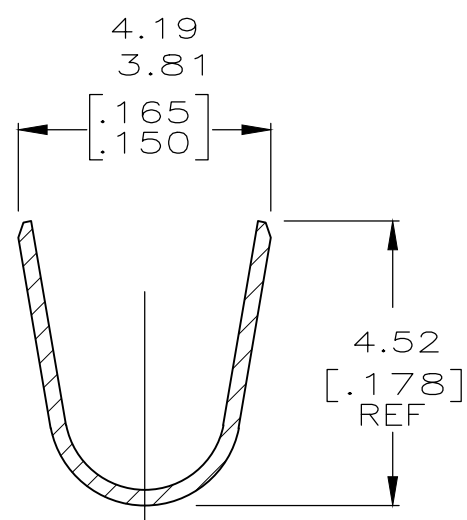
B

4.32
[.170]
MIN
LOCALIZED
PLATE AREA3.18
[.125]

A

B

OBSOLETE

SECTION A-A
SCALE 10:1SECTION B-B
SCALE 10:1

0.00076[.000030] THK GOLD OVER NICKEL ON INSIDE OF RECEPTACLE AND WIRE BARREL; REMAINDER OF CONTACT IS NICKEL PLATED.



0.00076[.000030] THK GOLD ON INSIDE OF RECEPTACLE; REMAINDER OF CONTACT IS NICKEL PLATED.



DIMENSIONS IN BRACKETS ARE IN INCHES.



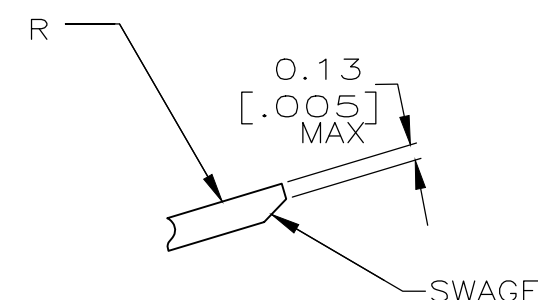
PRELIMINARY, NOT FOR PRODUCTION.



OBSOLETE PARTS: OBSOLETE CIS STREAMLINING PER D.RENAUD/D.SINISIA



WIRE RANGE: 14-20AWG, 2.08-0.52mm².
INSULATION RANGE: Ø1.52-3.30 [Ø.060-.130].

DETAIL C
SCALE 20:1

-	MINI	GOLD	0.30 [.012] COPPER ALLOY	1-350536-2
-	-	TIN	0.30 [.012] BE CU	1-350536-0
-	STANDARD	TIN	0.30 [.012] PH BZ	-350536-9-
350550-7	MINI	GOLD	0.30 [.012] BRASS	350536-7
350550-6	MINI	GOLD	0.30 [.012] PH BZ	350536-6
350550-3	MINI	TIN	0.30 [.012] PH BZ	350536-3
350550-2	MINI	GOLD	0.30 [.012] BRASS	350536-2
350550-1	MINI	TIN	0.30 [.012] BRASS	350536-1
LOOSE PIECE (REF)	APPLICATOR TYPE	FINISH	MATERIAL	PART NUMBER

THIS DRAWING IS A CONTROLLED DOCUMENT.

DIMENSIONS: mm [INCHES]	TOLERANCES UNLESS OTHERWISE SPECIFIED:
	0 PLC ± - 1 PLC ± - 2 PLC ± 0.13 [.005] 3 PLC ± - 4 PLC ± - ANGLES ± - FINISH
MATERIAL	-

DWN	K. WHITAKER	07NOV2003
CHK	S. RIDGILL	07-NOV-03
APVD	S. RIDGILL	07-NOV-03
PRODUCT SPEC	108-1031	
APPLICATION SPEC	114-1010	
WEIGHT		

TE Connectivity			
NAME SOCKET, UNIVERSAL MATE-N-LOK™ -			
SIZE	CAGE CODE	DRAWING NO	RESTRICTED TO
A3	00779	C-350536	-
CUSTOMER DRAWING		SCALE 4:1	SHEET 1 OF 1
		REV	AD4

Mouser Electronics

Authorized Distributor

Click to View Pricing, Inventory, Delivery & Lifecycle Information:

[TE Connectivity:](#)

[350536-1 \(Mouser Reel\)](#) [350536-1 \(Cut Strip\)](#)