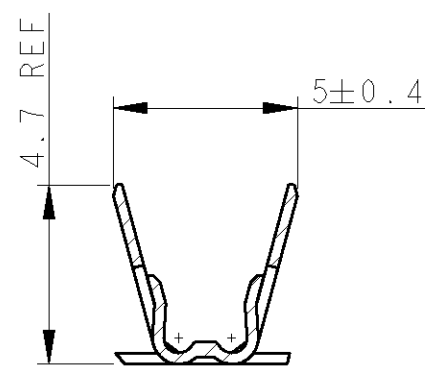
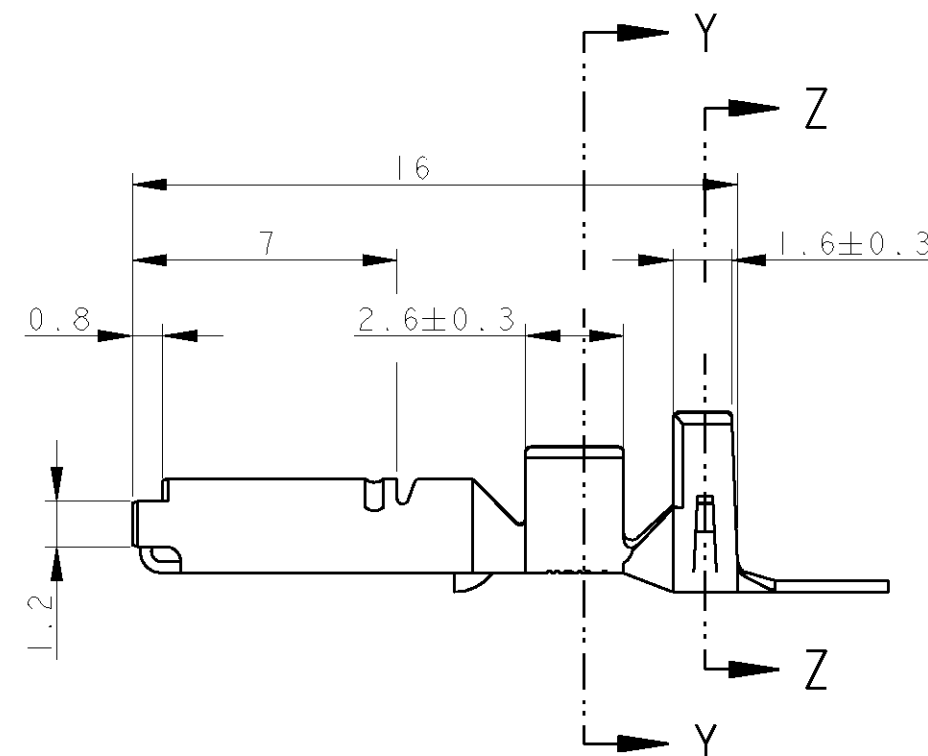
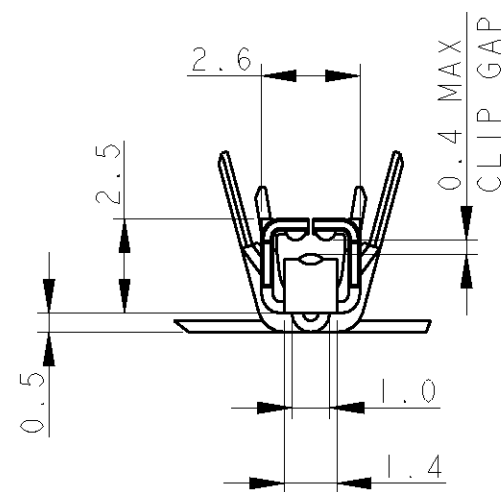
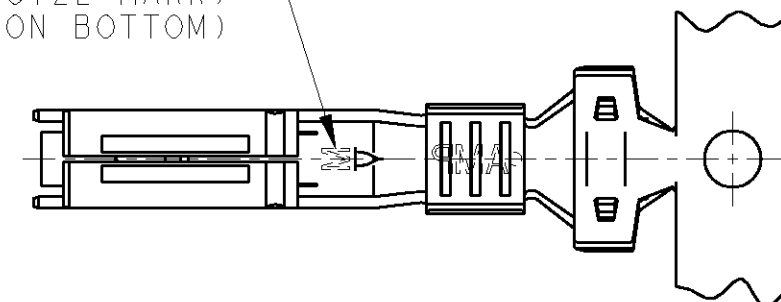


SECTION Y - Y



SECTION Z - Z

WIRE RANGE ID MARK
("M" SIZE MARK)
(STAMPED ON BOTTOM)



NOTES:

1. WIRE DETAILS: 0.75-1.5mm², 1.7-2.4 INSULATION DIA.
2. SIMILAR TO PART NUMBER 173631

LOC B DIST E		B	EB00-0283-02	2/08/02	MJG	BB
		A	EB00-0191-02	1-7-02	-	-
		O	RELEASE FOR PRODUCTION, ECN C6261	27-8-92	-	-
		I	-	16-10-91	MM	-
	P	LTR	REVISION RECORD	DATE	DWN	APVD

APPL FEED	TRIMMING BURR
WDW	IDW
REELING	107-
SPLICE	115-1018

PRE-TIN	BRASS	345208-1
FINISH	MATERIAL	PART NO
WIRE RANGE	DIMENSIONS: mm DIMENSIONS APPLY BEFORE PLATING TOLERANCES UNLESS OTHERWISE SPECIFIED:	tyco Tyco Electronics UK Ltd, Barton Tors, Electronics Bideford, Devon, EX39 4HE.
0.75-1.5		
INSUL RANGE	2 PLC ± 0.5 3 PLC ± 0.5 ANGLES ±	
1.7-2.4		
SURF AREA		
	CHK 2AUG2002 M.GREENER DWN 31JUL2002 D. ROUSE	NAME - .070 SERIES RECEPTACLE CONTACT
	APVD 2AUG2002 B.BAKER	SCALE 5:1 SIZE A3 DRAWING NO C345208 REV B

Mouser Electronics

Authorized Distributor

Click to View Pricing, Inventory, Delivery & Lifecycle Information:

[TE Connectivity:](#)

[345208-1 \(Mouser Reel\)](#) [345208-1 \(Cut Strip\)](#)