

REVISIONS

| P | LTR | DESCRIPTION | DATE | DWN | APVD |
|---|-----|------------------|-----------|-----|------|
| | P | PRODUCTION ISSUE | 30JAN2019 | PNT | MT |

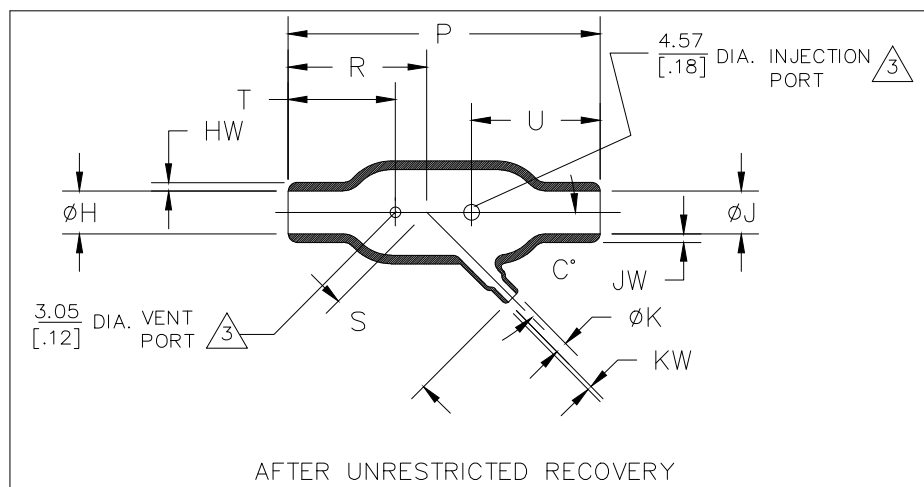
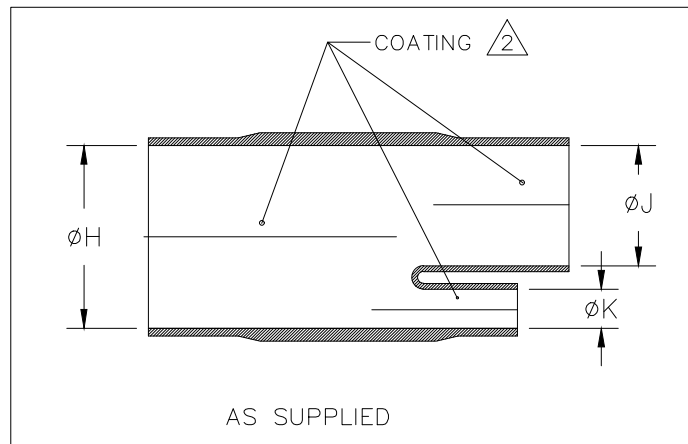


TABLE OF DIMENSIONS

| PART DESCRIPTION | H & J | | K | | P | R | S | T | U | HW & JW | KW | C° | WEIGHT REF |
|------------------|----------------|----------------|----------------|---------------|-----------------|----------------|----------------|----------------|----------------|---------------|---------------|-----|------------------|
| | MIN | MAX | MIN | MAX | ±10% | ±10% | ±10% | ±10% | ±10% | ±20% | ±20% | ±5° | lb/[gms] |
| | a | b | a | b | b | b | b | b | b | b | b | b | b |
| 342A012 | 13.2 [.52] | 6.9 [.27] | 6.6 [.26] | 3.6 [.14] | 49.3 [1.94] | 22.9 [.90] | 23.4 [.92] | 19.6 [.77] | 19.6 [.77] | 1.52 [.06] | 1.02 [.04] | 45° | 2.72 [.006] |
| 342A024 | 26.9 [1.06] | 12.7 [.50] | 6.6 [.26] | 3.6 [.14] | 92.5 [3.64] | 41.1 [1.62] | 35.8 [1.41] | 31.8 [1.25] | 39.6 [1.56] | 2.54 [.10] | 1.02 [.04] | 45° | 16.33 [.036] |
| 342A034 | 26.9 [1.06] | 13.7 [.54] | 13.2 [.52] | 6.1 [.24] | 144.8 [5.70] | 69.9 [2.75] | 53.6 [2.11] | 50.8 [2.00] | 50.8 [2.00] | 2.54 [.10] | 1.52 [.06] | 45° | 24.95 [.055] |
| 342A048 | 55.6 [2.19] | 26.9 [1.06] | 13.2 [.52] | 6.9 [.27] | 184.9 [7.28] | 83.3 [3.28] | 71.9 [2.83] | 63.5 [2.50] | 63.5 [2.50] | 4.57 [.18] | 1.52 [.06] | 45° | 124.28 [.274] |
| 342A058 | 55.6 [2.19] | 26.9 [1.06] | 26.9 [1.06] | 13.7 [.54] | 203.5 [8.01] | 95.5 [3.76] | 93.0 [3.66] | 66.0 [2.60] | 66.0 [2.60] | 4.57 [.18] | 2.54 [.10] | 45° | 148.78 [.328] |

RELEASED FOR PUBLICATION

ALL RIGHTS RESERVED.

THIS DRAWING IS UNPUBLISHED.

© COPYRIGHT - TE Connectivity Ltd.

DIMENSIONS:
mm [INCHES]

DWN 30JAN2019
PRAVEEN N T

CHK 30JAN2019
N NAGAR

APVD 30JAN2019
M TAYLOR

MATERIAL

SEE SHEET 2

FINISH

-

TOLERANCES UNLESS
OTHERWISE SPECIFIED:

0 PLC ± -

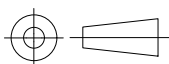
1 PLC ± 0.50[.1]

2 PLC ± 0.25[.01]

3 PLC ± 0.13[.005]

4 PLC ± -

ANGLES ± 1°



PRODUCT SPEC

-

APPLICATION SPEC

-

WEIGHT

NAME

TRANSITION, 45 DEGREE

SIZE

A4

CAGE CODE

00779

DRAWING NO

C-342A0XX-XX-0

RESTRICTED TO

-

CUSTOMER DRAWING

SCALE

DNS

SHEET

1 OF 2

REV

P

REVISIONS

| P | LTR | DESCRIPTION | DATE | DWN | APVD |
|---|-----|-------------|------|-----|------|
| | — | SEE SHEET 1 | — | — | — |

COMPATIBILITY CHART

| MATERIAL DASH NO. | MATERIAL DESCRIPTION | RT SPEC | COATING SLASH NO. | COATING S NO. |
|-------------------|--------------------------------------|---------|-------------------|-------------------|
| —3 | Polyolefin, Semi-rigid | RT-301 | /42;/86;/180 | S1017;S1048;S1030 |
| —4 | Polyolefin, Flexible | RT-1304 | /42;/86;/180 | S1017;S1048;S1030 |
| —12 | Fluoroelastomer, Flexible | RT-1312 | N/A | N/A |
| —25 | Elastomer, Fluid Resistant | RW-2070 | /42;/86;/225 | S1017;S1048;S1206 |
| —100 | Polyolefin, Semi-flexible Zerohal | RW-2082 | /86;/180 | S1048;S1030 |

ORDERING INFORMATION

| | | | | | |
|-------------------------------|---------|-----|-----|-----|----|
| | 342A0XX | —XX | —XX | /XX | —0 |
| BASE PART NUMBER | | | | | |
| MATERIAL DASH NUMBER | | | | | |
| MODIFICATION NUMBER | | | | | |
| ADHESIVE SLASH NUMBER | | | | | |
| SEE COMPATIBILITY CHART BELOW | | | | | |
| COLOR DESIGNATOR | | | | | |

NOTES:

1. DIMENSIONS APPEARING IN TABLE
ARE AS FOLLOWS:

- a — AS SUPPLIED
b — AFTER UNRESTRICTED RECOVERY

2. COATING (ADHESIVE) IS OPTIONAL.
AS SUPPLIED DIMENSIONS APPEARING
IN TABLE ARE FOR UNCOATED PARTS.
WHEN COATING IS ADDED, ENTRY DIAMETER
WILL BE REDUCED BY 1.5mm[.06]MAX.
COATING DIMENSIONS CH & CJ WILL BE 12.7[.50] MIN
AND CK WILL BE 3.0[.12]MIN.


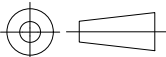
3. MOLDING PORTS ARE OPTIONAL.
WHEN —00 MODIFICATION NUMBER IS SPECIFIED,
MOLDING PORTS WILL BE LOCATED AS SHOWN.

RELEASED FOR PUBLICATION

ALL RIGHTS RESERVED.

THIS DRAWING IS UNPUBLISHED.

COPYRIGHT — TE Connectivity Ltd.

| | | | | |
|-------------------------------------------------------------------------------------|--------------------|------------------|-----------------------------------------------------------------------------------------------------------|-----------------|
| DIMENSIONS: mm [INCHES] | DWN PRAVEEN N T | 30JAN2019 | MATERIAL — | FINISH — |
| | CHK N NAGAR | 30JAN2019 |  TE Connectivity Ltd. | |
| TOLERANCES UNLESS OTHERWISE SPECIFIED: | APVD M TAYLOR | 30JAN2019 | | |
| 0 PLC ± — | PRODUCT SPEC | NAME | TRANSITION, 45 DEGREE | |
| 1 PLC ± 0.50[.1] | — | — | | |
| 2 PLC ± 0.25[.01] | APPLICATION SPEC | SIZE | CAGE CODE | DRAWING NO |
| 3 PLC ± 0.13[.005] | — | A4 | 00779 | C= 342A0XX—XX—0 |
| 4 PLC ± — | WEIGHT | RESTRICTED TO | | |
| ANGLES ± 1° | | — | | |
|  | | CUSTOMER DRAWING | | |
| | | SCALE | DNS | SHEET 2 of 2 |
| | | REV P | | |

Mouser Electronics

Authorized Distributor

Click to View Pricing, Inventory, Delivery & Lifecycle Information:

[TE Connectivity:](#)

[342A012-3-00-0](#)