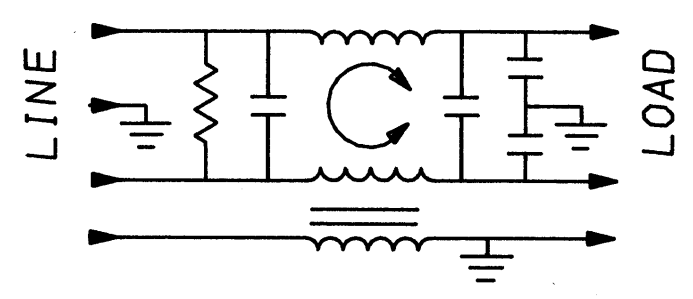


1 **OBSOLETE PARTS: OBSOLETE CIS STREAMLINING**
PER D.RENAUD/D.SINISI


1-1609035-5 OBSOLETE 1
1-6609035-5



50Ω - 50Ω (MINIMUM) INSERTION LOSS											
FREQUENCY MHz	.01	.05	.2	.5	1.0	2.0	5.0	10	20	30	
COMMON dB	2	9	18	27	31	36	40	41	38	36	
DIFF. dB	5	13	14	60	60	60	51	43	43	43	

This document is proprietary to CORCOM INC. and is not to be reproduced nor used for manufacturing purposes except on CORCOM's order or prior written consent.

TOLERANCE EXCEPT AS NOTED			
DECIMAL:	.XXX	.XX	.X
ENGLISH:	±.025		± 1°
METRIC:	±		
MATERIAL:			
AS SUPPLIED			
FINISH:			
AS SUPPLIED			

 corcom LIBERTYVILLE, IL 60048			
POWER LINE FILTER			
SCALE	DATE	DRG. NO.	REV.
NTS	9-12-89	30ESK6C.	2
DRW. BY	ORIGINATOR		
TDL	CW		

DESCRIPTION	APPROVED BY	DATE	REV
	C. Westbury	12-3-90	1
ECO-09-026495	AEG	10DEC09	2

SAFETY ORGANIZATION(S):
THIS FILTER HAS BEEN FORMALLY RECOGNIZED, CERTIFIED OR APPROVED BY THE LISTED AGENCY. THEREFORE, ALL TEST/REQUIREMENTS SPECIFIED IN THE LATEST REVISION OF THE FOLLOWING AGENCY STANDARDS HAVE BEEN MET:

UL RECOGNIZED	UL 1283
CSA CERTIFIED	CSA 22.2, NO.0,0.4,8
VDE APPROVED	VDE 565-3

OPERATING SPECIFICATIONS:
LINE VOLTAGE/CURRENT: 30 AMP., 120/250 VAC
25 AMP./40°C, 250 VAC
LINE FREQUENCY: 50-60Hz
MAX. CASE RISE @ RATED CURRENT: 40°C
MAX. LEAKAGE CURRENT, EACH
LINE TO GROUND .3mA at 120V 60 Hz
.5 mA at 250V 50 Hz
OPERATING AMBIENT TEMP. RANGE: -10°C TO +40°C @ RATED CURRENT, I_r

IN AN AMBIENT, T_a, HIGHER THAN 40°C, THE MAXIMUM OPERATING CURRENT, I_o, IS AS FOLLOWS:

$$I_o = I_r \sqrt{\frac{85-T_a}{45}}$$

RELIABILITY SPECIFICATIONS:
STORAGE TEMPERATURE: -40°C TO +85°C
HUMIDITY: 21 DAYS @ 40°C 95% RH
CURRENT OVERLOAD TEST: 6 TIMES RATED CURRENT FOR 8 SECONDS

TEST SPECIFICATIONS:
INDUCTANCE: .529 mH NOMINAL (Gnd Choke)
1.73 mH NOMINAL
CAPACITANCE: (MEASURED @ 1 KHz, 0.25 VAC MAX., 25°C ±1°C)
LINE TO GROUND: .004μF ±20%
LINE TO LINE: 1.08μF ±20%
DISCHARGE RESISTOR 235 KΩ
LINE/GROUND AND LINE/LINE 6000 MΩ (MIN) AT 100 VDC
INSULATION RESISTANCE 20°C AND 50% RH

RECOMMENDED RECEIVING INSPECTION HIPOT:
LINES TO GROUND: 2250 VDC FOR 1 MINUTE
LINE TO LINE: 1450 VDC FOR 1 MINUTE

FILTER APPROVAL:
THE BEST WAY TO SELECT AND QUALIFY A FILTER IS FOR YOUR ENGINEERING TO TEST THE UNIT IN YOUR EQUIPMENT.

Mouser Electronics

Authorized Distributor

Click to View Pricing, Inventory, Delivery & Lifecycle Information:

[TE Connectivity:](#)

[30ESK6C](#)