

4

3

2

1

THIS DRAWING IS UNPUBLISHED.

RELEASED FOR PUBLICATION

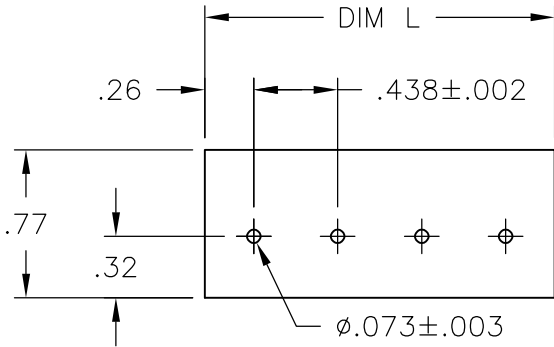
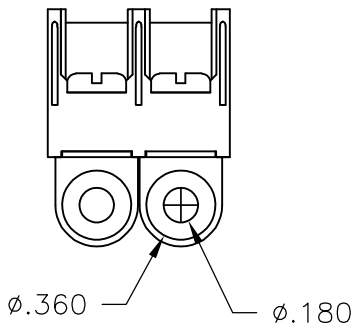
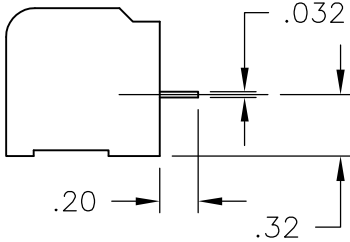
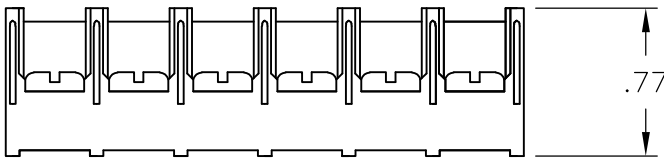
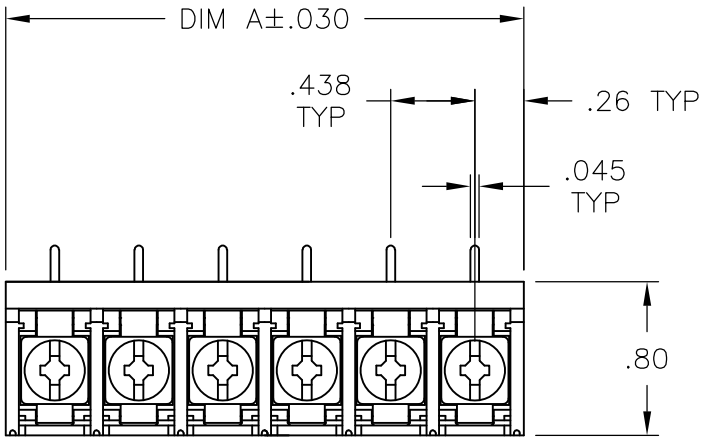
© COPYRIGHT - BY TYCO ELECTRONICS CORPORATION. ALL RIGHTS RESERVED.

LOC	DIST	REVISIONS				
P	LTR	DESCRIPTION		DATE	DWN	APVD
	F	REVISED PER ECO-10-004812		05MAY10	HMR	CR

MATERIALS:  
HOUSING: THERMOPLASTIC, UL94V-0, BLACK.  
TERMINAL: BRIGHT TIN PLATED COPPER ALLOY.  
SCREWS: 8-32, ZINC PLATED STEEL.

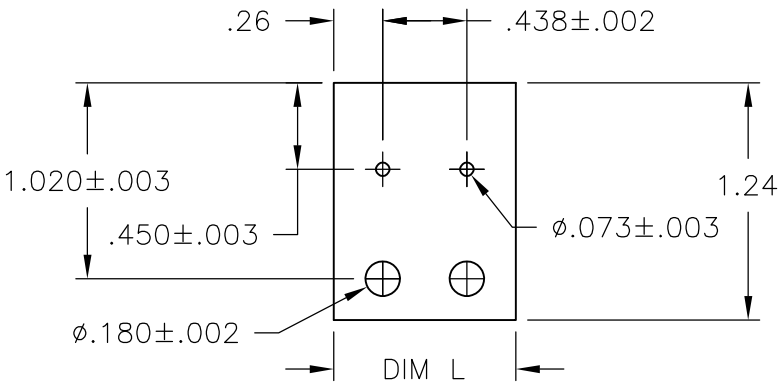
ELECTRICAL:  
CURRENT RATING: 30A  
VOLTAGE RATING: 600V  
WIRE RANGE: 10-18 AWG (UL)  
10-22 AWG (CSA)

MECHANICAL:  
RECOMMENDED TORQUE: 20 IN-LB.  
OPERATING TEMP.: -40°C TO +120°C.


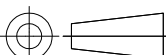


RECOMMENDED PCB LAYOUT

8.822	20	8PCR-20-007	2-1776151-0
8.385	19	8PCR-19-007	1-1776151-9
7.947	18	8PCR-18-007	1-1776151-8
7.510	17	8PCR-17-007	1-1776151-7
7.072	16	8PCR-16-007	1-1776151-6
6.635	15	8PCR-15-007	1-1776151-5
6.197	14	8PCR-14-007	1-1776151-4
5.760	13	8PCR-13-007	1-1776151-3
5.322	12	8PCR-12-007	5-1437657-0
4.885	11	8PCR-11-007	4-1437657-7
4.447	10	8PCR-10-007	4-1437657-6
4.010	9	8PCR-09-007	1776151-9
3.572	8	8PCR-08-007	4-1437657-4
3.135	7	8PCR-07-007	1776151-7
2.697	6	8PCR-06-007	3-1437657-8
2.260	5	8PCR-05-007	3-1437657-4
1.822	4	8PCR-04-007	5-1546159-1
1.385	3	8PCR-03-007	4-1546159-9
.947	2	8PCR-02-663	2-1776151-1
.947	2	8PCR-02-007	1776151-2
DIM A	NO OF POS	CATALOG NUMBER	TE PART NO



2-1776151-1

THIS DRAWING IS A CONTROLLED DOCUMENT.		DWN S SCHLEGEL	9/16/04	 Tyco Electronics		Tyco Electronics Corporation											
		CHK S YODER	9/16/04			Harrisburg, PA 17105-3608											
DIMENSIONS: INCHES		TOLERANCES UNLESS OTHERWISE SPECIFIED:		NAME  8PCR-XX-007 ASSEMBLY													
		APVD S YODER						9/16/04									
		PRODUCT SPEC															
		APPLICATION SPEC															
		MATERIAL		FINISH		SIZE		CAGE CODE	DRAWING NO	RESTRICTED TO							
-		-		WEIGHT		-		A3		00779	C-3-1437657-4	-					
				CUSTOMER DRAWING								SCALE	1:1	SHEET	1 OF 1	REV	F

# Mouser Electronics

Authorized Distributor

Click to View Pricing, Inventory, Delivery & Lifecycle Information:

[TE Connectivity:](#)

[8PCR-12-007](#)