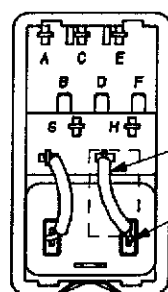
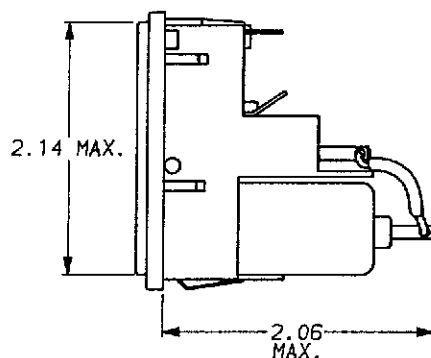
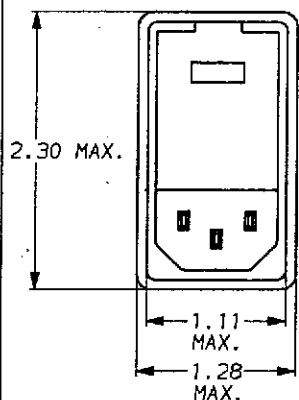


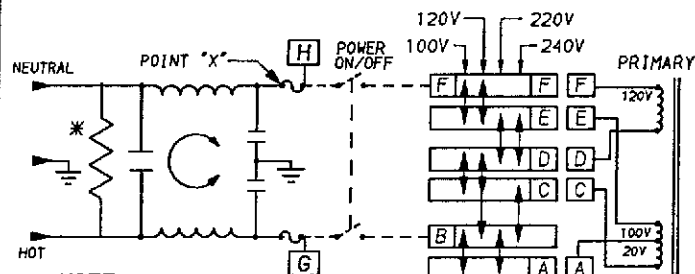
RECOMMENDED PANEL CUTOUT (NOT TO SCALE)

NOTES:

- (A) FOR PANEL TH'K. OF .031 - .079
- (B) FOR PANEL TH'K. OF .083 - .126
- (C) FOR SNAP-IN APPLICATION, THE SIDES OF THE CUTOUT MUST HAVE A .020R. ON THE INSTALLATION SIDE.



NOTE: ALL BACKPLATE TERMINALS ARE .110 FASTONS.



NOTE:

- 1.) PROVISION FOR DUAL EUROPEAN STYLE FUSING 2EDL4CM ONLY.
- 2.) 2EDL4C CONNECT JUMPER OR SWITCH FROM POINT X TO F AND FROM G TO B.



OBSELETE PARTS: OBSELETE CIS STREAMLINING PER D.RENAUD/D.SINISI

*RESISTOR ADDED TO PRODUCT BUILT AFTER 3-30-92 (S212).

1609122-7 OBSOLETE 3
6609122-7
1609122-9
6609122-9

50n - 50n (MINIMUM) INSERTION LOSS									
FREQUENCY MHz	.05	.15	.50	1.0	3.0	5.0	10	30	
COMMON dB	6	14	20	24	35	40	45	50	
DIFF. dB	—	7	16	21	23	37	47	50	

This document is proprietary to CORCOM INC. and is not to be reproduced nor used for manufacturing purposes except on CORCOM's order or prior written consent.

SAFETY ORGANIZATION(S):

THIS FILTER HAS BEEN FORMALLY RECOGNIZED, CERTIFIED OR APPROVED BY THE LISTED AGENCY. THEREFORE, ALL TEST/REQUIREMENTS SPECIFIED IN THE LATEST REVISION OF THE FOLLOWING AGENCY STANDARDS HAVE BEEN MET.

UL RECOGNIZED
CSA CERTIFIED
VDE APPROVED
SEMKO APPROVED
SEV APPROVED

UL 1283
CSA 22.2, NO.0,0.4,8
VDE 565-3, 625
SEN 432901
SEV 1055/TP1977/S.1.1

OPERATING SPECIFICATIONS:

LINE VOLTAGE/CURRENT: 2 AMP., 120/250 VAC
2 AMP./40°C, 250 VAC
50-60Hz
LINE FREQUENCY: 50-60Hz
MAX. LEAKAGE CURRENT, EACH
LINE TO GROUND: .25mA @ 120V 60Hz
.40mA @ 250V 50Hz
OPERATING AMBIENT TEMP. RANGE: -10°C TO +40°C @ RATED CURRENT, I_r

IN AN AMBIENT, T_a, HIGHER THAN 40°C, THE MAXIMUM OPERATING CURRENT, I_o, IS AS FOLLOWS:

$$I_o = I_r \sqrt{\frac{85 - T_a}{45}}$$

RELIABILITY SPECIFICATIONS:

STORAGE TEMPERATURE: -25°C TO +85°C
HUMIDITY: 21 DAYS @ 40°C 95% RH
CURRENT OVERLOAD TEST: 6 TIMES RATED CURRENT FOR 8 SECONDS

TEST SPECIFICATIONS:

INDUCTANCE: .79mH NOMINAL
CAPACITANCE, (MEASURED @ 1 KHz, 0.25 VAC MAX., 25°C ±1°C)
LINE TO GROUND: .0028µF ±20%
LINE TO LINE: .047µF ±20%
DISCHARGE RESISTOR: 1.5 MΩ
LINE/GROUND AND LINE/LINE: 5000 MΩ (MIN) AT 100 VDC
INSULATION RESISTANCE: 20°C AND 50% RH
(W/O DISCHARGE RESISTOR)

RECOMMENDED RECEIVING INSPECTION HIPOT:

LINES TO GROUND: 2250 VDC FOR 1 MINUTE
LINE TO LINE: 1450 VDC FOR 1 MINUTE

FILTER APPROVAL:

THE BEST WAY TO SELECT AND QUALIFY A FILTER IS FOR YOUR ENGINEERING TO TEST THE UNIT IN YOUR EQUIPMENT.



POWER LINE FILTER

TOLERANCE EXCEPT AS NOTED
DECIMAL: .XXX
ENGLISH: ±.025
METRIC: ±1°
MATERIAL: AS SUPPLIED

FINISH:

SCALE: NTS
DATE: 3-4-87
DRG. NO.: 2EDL4C & 2EDL4CM
REV.: H1

Mouser Electronics

Authorized Distributor

Click to View Pricing, Inventory, Delivery & Lifecycle Information:

[TE Connectivity:](#)

[2EDL4C](#)