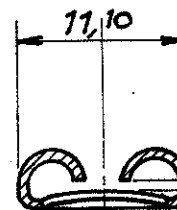
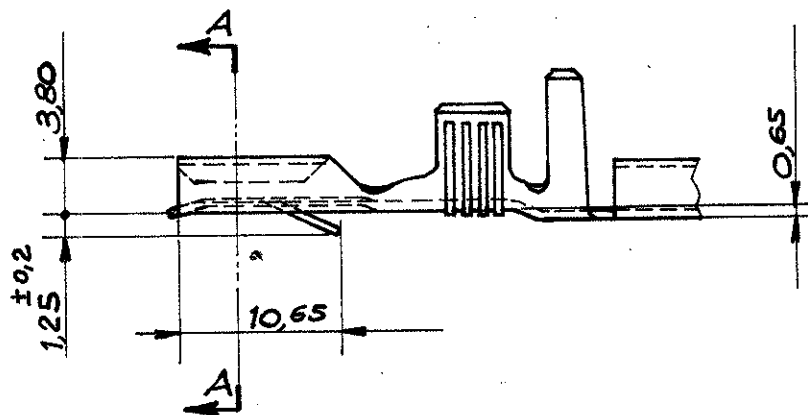
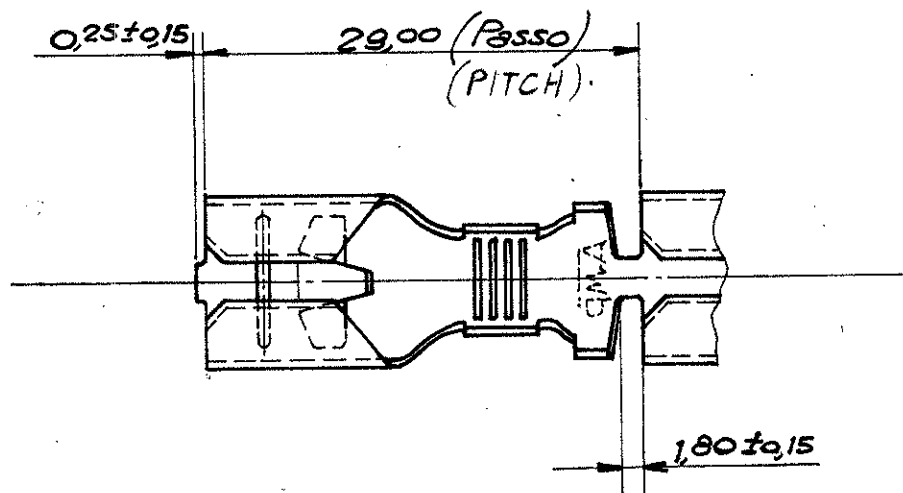


NUMBER
280755



Sez. A-A

Adatto per linguetta sp. 1,20
(TO FIT 1,20 mm TAB THK)

1 OBSOLETE PARTS: OBSOLETE CIS STREAMLINING PER D.RENAUD/D.SINISI

| | | |
|----------------------|--|------------|
| 280755-4 | BRONZO FOSF. STAGH. (TIN PL. PH. BR.) | |
| 280755-3 | BRONZO FOSF. (PHOSPH. BRONZE) | OBSOLETE 1 |
| 280755-2 | OTTONE STAGNATO (TIN PL. BRASS) | |
| 280755-1 | OTTONE (BRASS) | OBSOLETE |
| NUMERO (PART. N.) | MAT./FINITURA (MAT./FINISH) | |

PROIEZIONE AMERICANA
(AMERICAN PROJECTION)

CUSTOMER COPY
REFERENCE ONLY

MATERIAL AND FINISH

VEDERE TABELLA
(SEE TABLE)

TE

TE Connectivity

CLASS

TYPE

B2 REVISED PER ECO-11-005140 RK HMR SMAY11

WIRE RANGE INSULATION
6 ÷ 10 mm² φ 5 ÷ 7 mm

LTR REVISION RECORD LTR CHK DATE

TOLERANCE EXCEPT
AS NOTED
± 0,3 - 1,0

SCALE
2:1

LOC

NO

280755

B2

DR Jopper JULY 1976

DE 29/24/76

NAME

.375 SERIES FASTIN-FASTON RECEPTACLE

DIMENSIONS IN MM. DO NOT SCALE PRINT

PRINT DIST

Mouser Electronics

Authorized Distributor

Click to View Pricing, Inventory, Delivery & Lifecycle Information:

[TE Connectivity:](#)

[280755-2](#) [280755-2 \(Cut Strip\)](#)