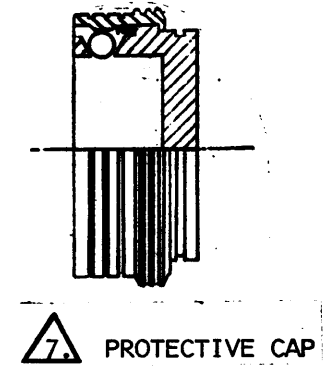
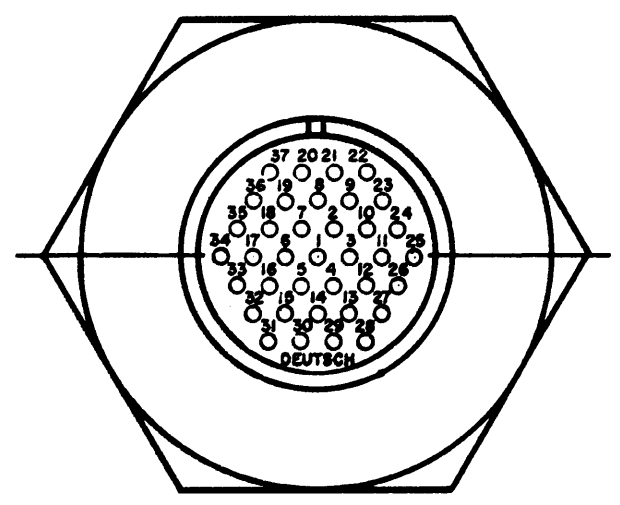
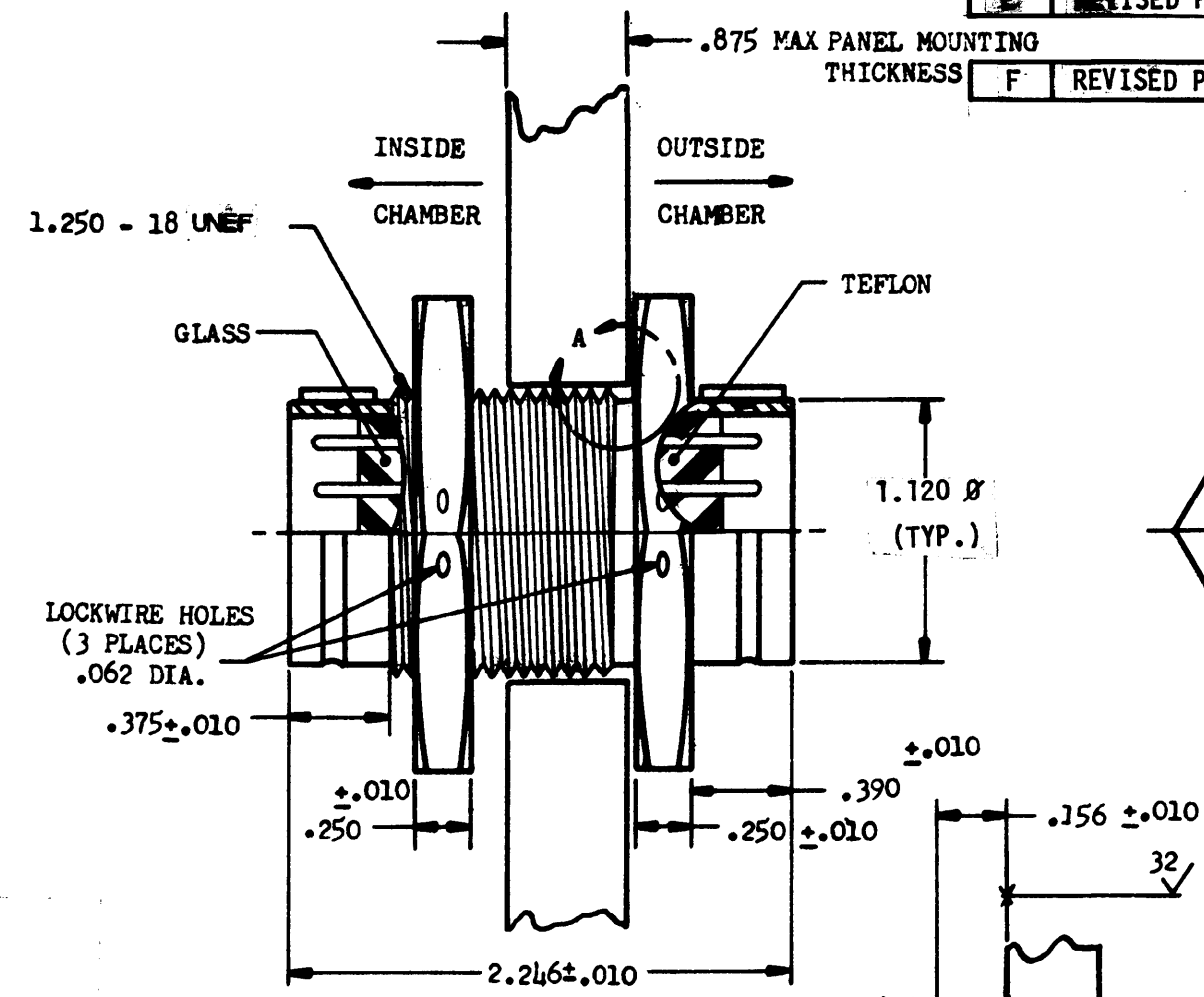
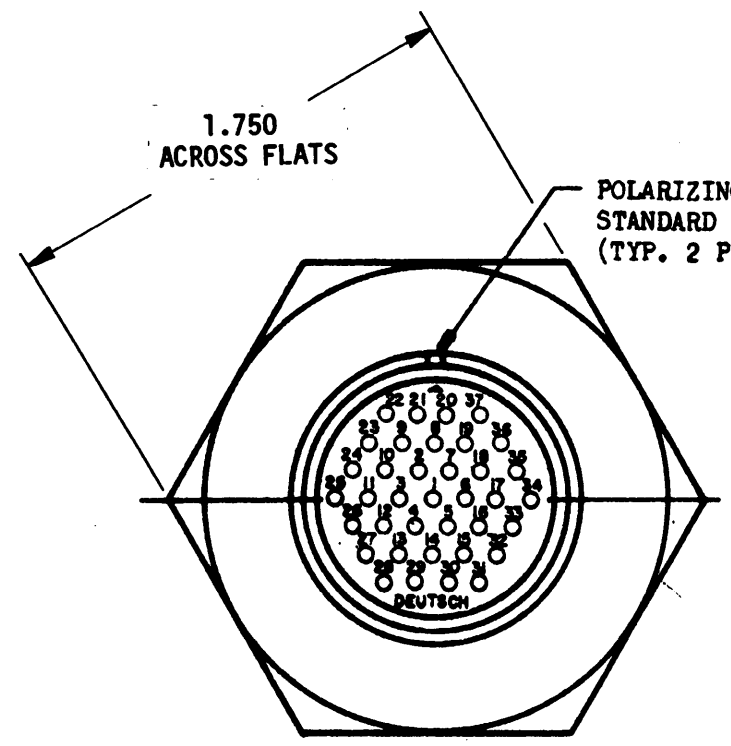


F 25698-37PP

REVISIONS			
REV	DESCRIPTION	DATE	APPROVED
B	CHANGE PER E.O. 182212.	8/11/76	UP
C	REVISED PER E.O. 96160	3-16-83	T.H.
D	REVISED PER E.O. 95628	4-22-83	L. Stoll
E	REVISED PER E.O. A1897	1-12-84	L. Stoll
F	REVISED PER E.O. A1830	3-2-84	L. Stoll



8. DIMENSIONS ARE IN INCHES UNLESS OTHERWISE SPECIFIED. TWO PROTECTIVE CAPS (4615-201-3730) TO BE SHIPPED ASSEMBLED ON RECEPTACLE. PROTECTIVE CAPS ARE NOT LOX COMPATIBLE.
6. THIS DESIGN CONFORMS TO SPECIFICATION 81L2-2, MARTIN MARIETTA, NEW ORLEANS, LOUISIANA AND IS INTENDED TO MATE WITH THE FOLLOWING PLUGS.
- |                                | DEUTSCH P/N | MARTIN MARIETTA P/N |
|--------------------------------|-------------|---------------------|
| INSIDE PLUG (TEFLON INSERT)    | 17106-37S   | 81L2-1              |
| OUTSIDE PLUG (SILICONE INSERT) | 17107-37S   | 81L2-3              |
| OUTSIDE PLUG (TEFLON INSERT)   | 17108-37S   | 81L2-9              |
5. MATERIAL: SHELL & LOCKNUT: STAINLESS STEEL PER QQ-S-763  
CONTACTS: 152 ALLOY PER MIL-I-23011, CLASS II  
INSERT SEAL: COMPRESSION GLASS PER 40M39569.  
INSERT: TEFLON PER MIL-P-19468.
4. FINISH: SHELL: CLEAR CADMIUM PLATE PER QQ-P-416.  
CONTACT: GOLD PLATED PER MIL-G-45204.
3. INSERTS ARE CONTINUOUS DIELECTRIC.  
2. CONTACT IDENTIFICATION IS PERMANENT.  
1. ALL INSIDE PARTS TO BE LOX COMPATIBLE.
- NOTES:

TOLERANCES UNLESS OTHERWISE SPECIFIED DECIMALS: .XXX ± .005 ANGLES: ± 0° 30' 0"		SIGNATURE & DATE	
MATERIAL SEE NOTE 5	DR	Scull	10-30-75
	CHK	W. Pinter	
	PE	Blain	3-11-76
FINISH SEE NOTE 4	APPD	1944	1/1/84
	SCALE	NONE	WT ~

RECEPTACLE  
JAM NUT MOUNTING  
T.B.F. HERMETIC  
DM SPECIAL  
MINIATURE QUICK DISCONNECT  
CRYOGENIC  
ENVELOPE

CP	MATL CODE
The Deutseh Company ELECTRONIC COMPONENTS DIVISION Municipal Airport Banning, California	
B	25698-37PP
DWG SIZE	CODE 11139
SHEET 1 OF 1	

# Mouser Electronics

Authorized Distributor

Click to View Pricing, Inventory, Delivery & Lifecycle Information:

[TE Connectivity:](#)

[25698-37PP](#)