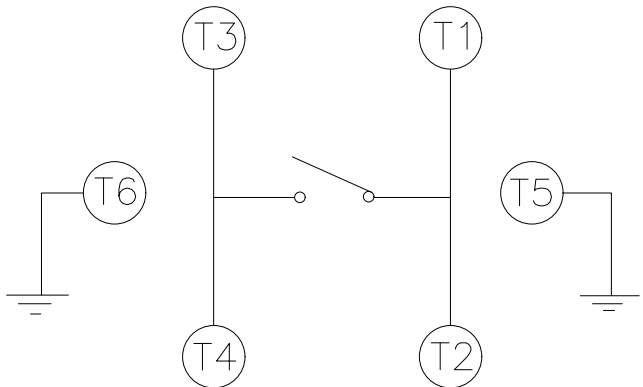
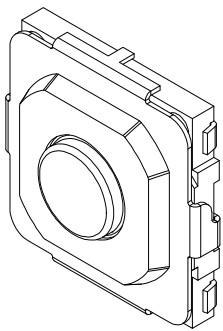
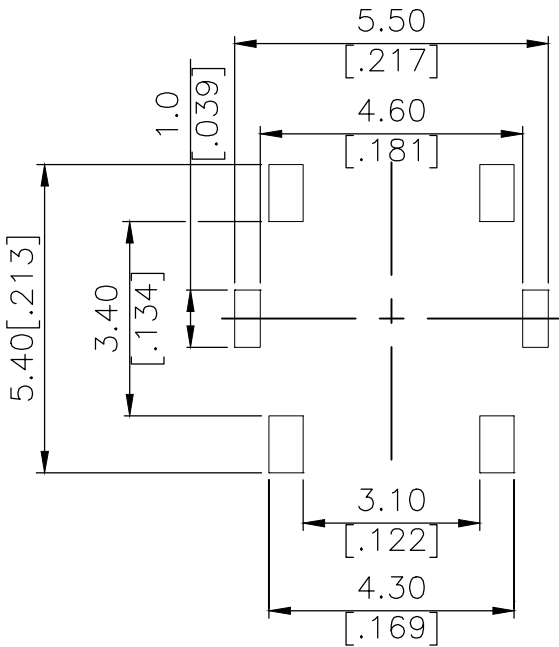


REVISIONS					
P	LTR	DESCRIPTION	DATE	DWN	APVD
	B	REVISED PER ECR-19-004770	10APR2019	SR	DD


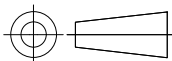


CIRCUIT DIAGRAM



P.C.B LAYOUT

260±50	MSLPT5252BL4MTR	2337243-4
160±50	MSLPT5252BL3MTR	2337243-3
100±50	MSLPT5252BL2MTR	2337243-2
70±50	MSLPT5252BL1MTR	2337243-1
ACTUATION FORCE (gf)	SMART PART NUMBER	PART NUMBER

THIS DRAWING IS A CONTROLLED DOCUMENT.		DWN GANESH C M 04JUL2018	 TE Connectivity Ltd.			
DIMENSIONS: mm [INCHES]	TOLERANCES UNLESS OTHERWISE SPECIFIED:	CHK ALEXANDER SHARPE 04JUL2018	NAME  SWITCH, TACTILE, LOW-PROFILE, MINI, 5.2 x 5.2 x 1.5, J BEND			
		APVD ALEXANDER SHARPE 04JUL2018				
	0 PLC ± - 1 PLC ± - 2 PLC ± 0.2 [.008] 3 PLC ± - 4 PLC ± - ANGLES ± -	PRODUCT SPEC —	SIZE A3 CAGE CODE 00779 DRAWING NO C=2337243 RESTRICTED TO —			
		APPLICATION SPEC —				
		WEIGHT —				
MATERIAL —	FINISH —	CUSTOMER DRAWING		SCALE NTS	SHEET 1 of 3	REV B

A300779 C-2337243

1470-19 (1/15)

THIS DRAWING IS UNPUBLISHED.	RELEASED FOR PUBLICATION - , - .
© COPYRIGHT — TE Connectivity Ltd.	ALL RIGHTS RESERVED.

REVISIONS					
P	LTR	DESCRIPTION	DATE	DWN	APVD
	—	SEE SHEET 1	—	—	—

NOTES:

1. MATERIALS:

TERMINAL: COPPER ALLOY, SILVER OVER NICKEL FINISH  
BASE: THERMOPLASTIC, BLACK  
ACTUATOR: STEEL, NICKEL FINISH  
TAPE: POLYTETRAFLUOROETHYLENE  
CONTACT: STAINLESS STEEL, SILVER OVER NICKEL FINISH  
COVER: NICKEL SILVER

2. COMPLIANCE:

ALL MATERIALS AND FINISHES SHALL COMPLY WITH EU  
DIRECTIVE 2002/95/EC OF 27JAN2003(RoHS)

3. SPECIFICATIONS:

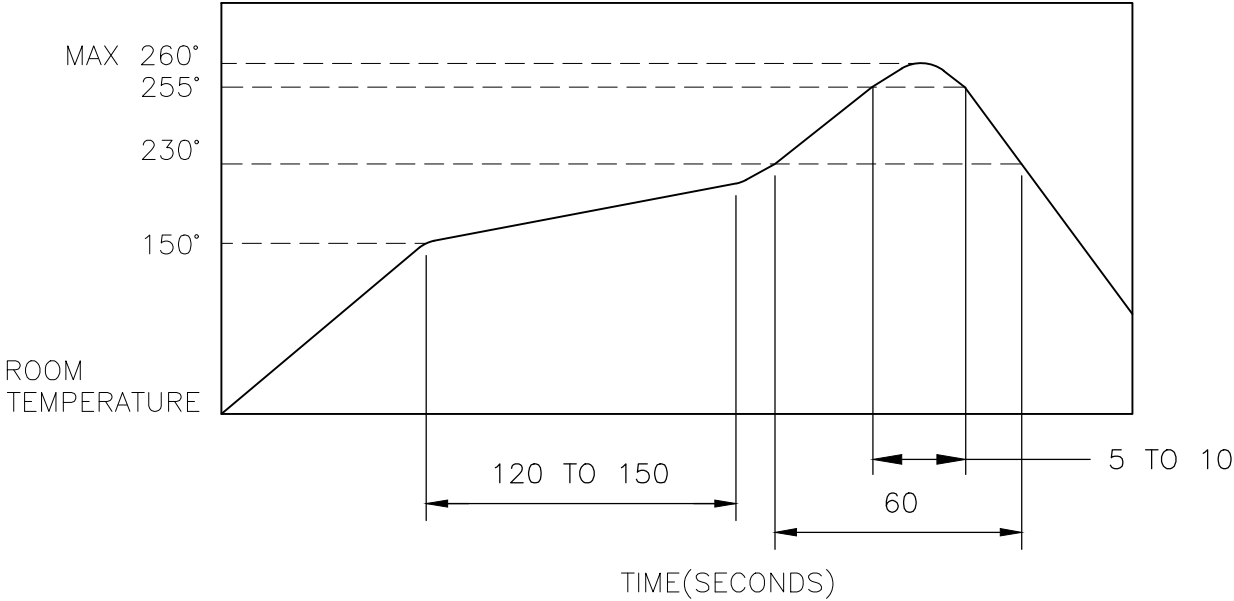
RATING: 50 mA, 12V DC  
CONTACT RESISTANCE: 100mΩ MAXIMUM (INITIAL)  
INSULATION RESISTANCE: 100MΩ MINIMUM (INITIAL)  
DIELECTRIC STRENGTH: 250 V AC, 1 MINUTE  
OPERATING LIFE: 2337243-1 (70gf) = 1,000,000 CYCLES WITH LOAD  
2337243-2 (100gf) = 1,000,000 CYCLES WITH LOAD  
2337243-3 (160gf) = 1,000,000 CYCLES WITH LOAD  
2337243-4 (260gf) = 200,000 CYCLES WITH LOAD

TRAVEL: 0.25<sup>+0.1</sup><sub>-0.2</sub> [.010<sup>+0.004</sup><sub>-0.008</sub>]  
ACTUATION FORCE: 2337243-1 = 70±50 gf  
2337243-2 = 100±50 gf  
2337243-3 = 160±50 gf  
2337243-4 = 260±50 gf

OPERATING TEMPERATURE: -25° TO 70°C  
STORAGE TEMPERATURE: -30° TO 80°C

4. SOLDER CONDITIONS:

SMT:



THE CONDITON NOTED ABOVE IS THE TEMPERATURE OF THE COPPER FOIL ON THE SURFACE OF THE PCB. THERE ARE CASES WHERE THE TEMPERATURE OF THE BOARD GREATLY DIFFERS FROM THE SURFACE OF THE SWITCH. DO NOT ALLOW THE SURFACE TEMPERATURE OF THE SWITCH TO EXCEED 260°C.

MANUAL SOLDERING

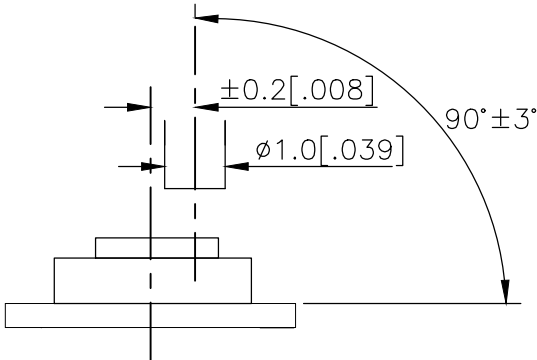
SOLDERING TEMPERATURE	350°C MAXIMUM
CONTINUOUS SOLDERING TIME	5 SECONDS MAXIMUM


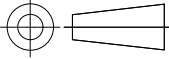
PRECAUTIONS IN HANDLING

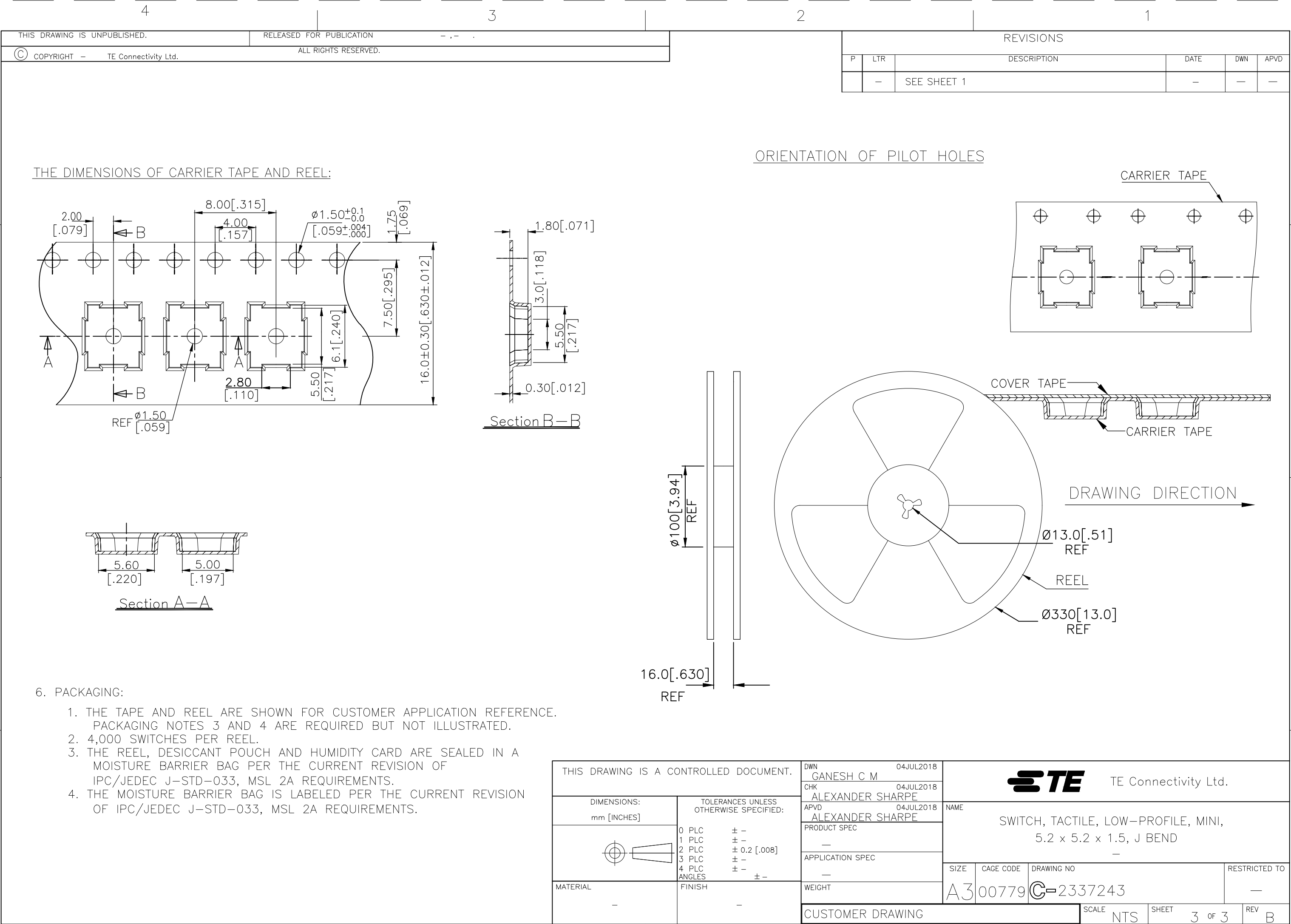
1. CARE SHOULD BE EXERCISED SO THAT FLUX FROM THE TOP SURFACE OF THE PRINTED CIRCUIT BOARD DOES NOT ADHERE TO THE SWITCH.
2. DO NOT WASH THE SWITCH

5. OPERATING PRECAUTIONS:

1. DO NOT ACTUATE THE SWITCH WITH EXCESSIVE FORCE
2. DISCONTINUE FORCE AFTER THE SWITCH HAS BEEN ACTUATED SO AS TO AVOID DEFORMATION OF THE COMPONENTS OF THE SWITCH. DEFORMATION OF THE COMPONENTS MAY CAUSE THE SWITCH TO MALFUNCTION.
3. ALIGN THE PLUNGER WITH THE SWITCH TO INSURE PROPER OPERATION



THIS DRAWING IS A CONTROLLED DOCUMENT.		DWN GANESH C M 04JUL2018	 TE Connectivity Ltd.		
		CHK ALEXANDER SHARPE 04JUL2018			
DIMENSIONS: mm [INCHES]	TOLERANCES UNLESS OTHERWISE SPECIFIED:	APVD ALEXANDER SHARPE 04JUL2018	NAME SWITCH, TACTILE, LOW-PROFILE, MINI, 5.2 x 5.2 x 1.5, J BEND		
		PRODUCT SPEC	—		
	0 PLC ± — 1 PLC ± — 2 PLC ± 0.2 [.008] 3 PLC ± — 4 PLC ± — ANGLES ± —	APPLICATION SPEC	—		
		—	SIZE A3	CAGE CODE 00779	DRAWING NO C-2337243
MATERIAL —	FINISH —	WEIGHT	RESTRICTED TO —		
CUSTOMER DRAWING		SCALE NTS	SHEET 2 OF 3	REV B	



THE DIMENSIONS OF CARRIER TAPE AND REEL:

Section A—A

Section B—B

ORIENTATION OF PILOT HOLES

Ø100 [3.94] REF

16.0 [.630] REF

Ø13.0 [.51] REF

REEL

Ø330 [13.0] REF

CARRIER TAPE

COVER TAPE

DRAWING DIRECTION

6. PACKAGING:

1. THE TAPE AND REEL ARE SHOWN FOR CUSTOMER APPLICATION REFERENCE. PACKAGING NOTES 3 AND 4 ARE REQUIRED BUT NOT ILLUSTRATED.

2. 4,000 SWITCHES PER REEL.

3. THE REEL, DESICCANT POUCH AND HUMIDITY CARD ARE SEALED IN A MOISTURE BARRIER BAG PER THE CURRENT REVISION OF IPC/JEDEC J—STD—033, MSL 2A REQUIREMENTS.

4. THE MOISTURE BARRIER BAG IS LABELED PER THE CURRENT REVISION OF IPC/JEDEC J—STD—033, MSL 2A REQUIREMENTS.

THIS DRAWING IS A CONTROLLED DOCUMENT.

DIMENSIONS:  
mm [INCHES]

TOLERANCES UNLESS OTHERWISE SPECIFIED:

0 PLC ± —  
1 PLC ± —  
2 PLC ± 0.2 [.008]  
3 PLC ± —  
4 PLC ± —  
ANGLES ± —  
FINISH —

MATERIAL

—

DWN 04JUL2018  
GANESH C M

CHK 04JUL2018  
ALEXANDER SHARPE

APVD 04JUL2018  
ALEXANDER SHARPE

PRODUCT SPEC

APPLICATION SPEC

WEIGHT

CUSTOMER DRAWING

TE Connectivity Ltd.

NAME  
SWITCH, TACTILE, LOW—PROFILE, MINI,  
5.2 x 5.2 x 1.5, J BEND

SIZE  
A3

CAGE CODE  
00779

DRAWING NO  
C=2337243

RESTRICTED TO  
—

SCALE  
NTS

SHEET  
3 OF 3

REV  
B

1470—19 (1/15)

# Mouser Electronics

Authorized Distributor

Click to View Pricing, Inventory, Delivery & Lifecycle Information:

[TE Connectivity:](#)

[MSLPT5252BL3MTR](#)