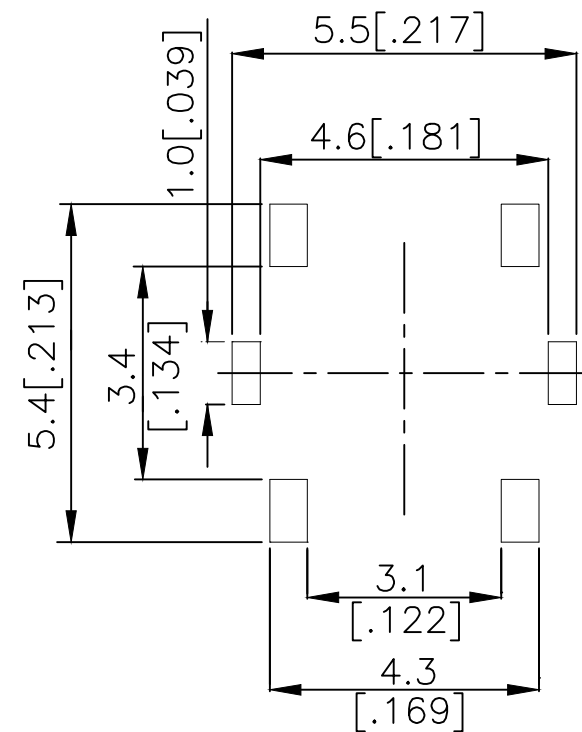
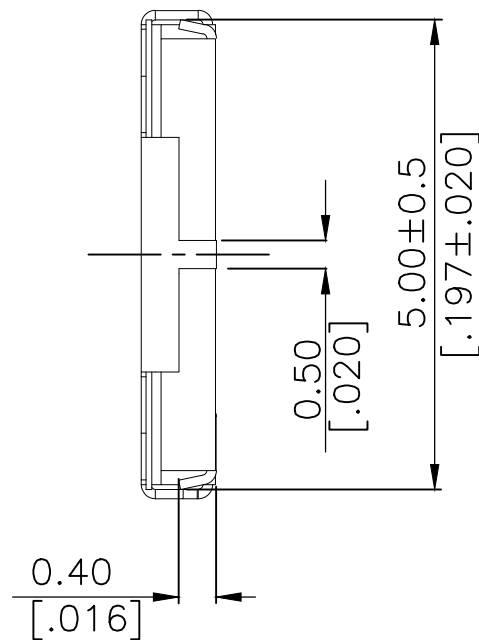
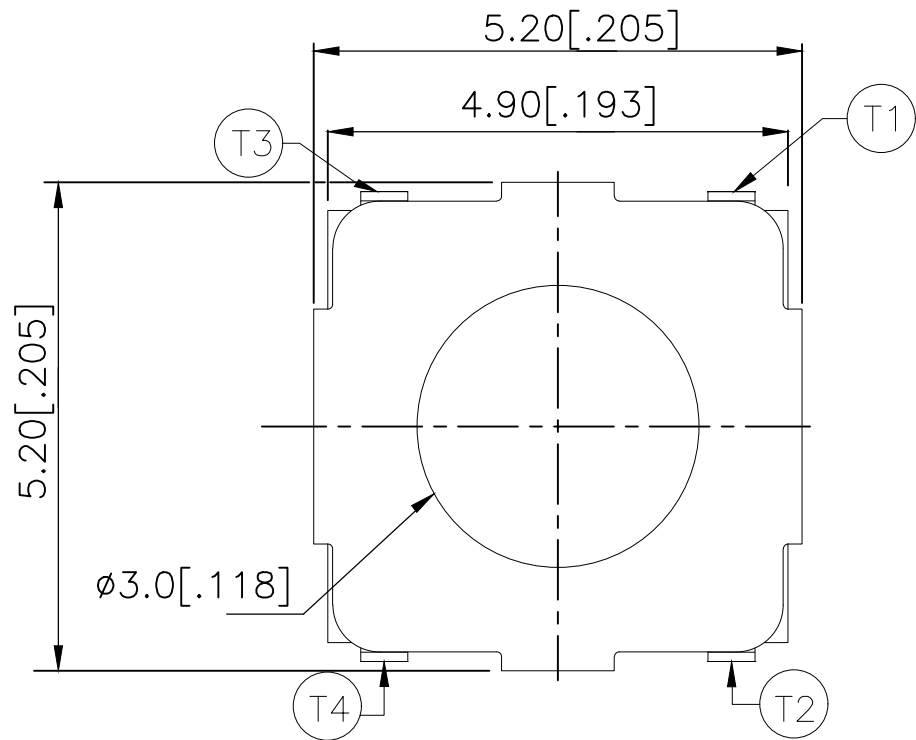
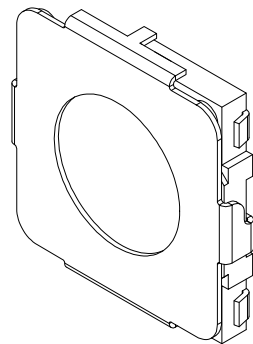
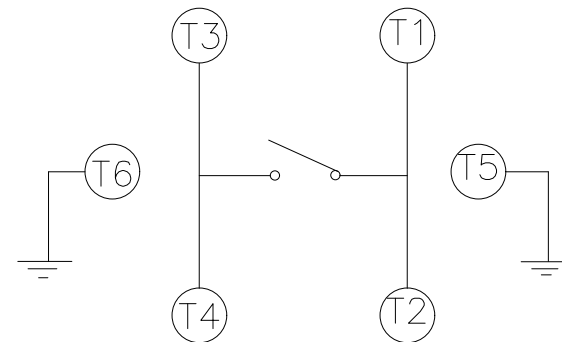
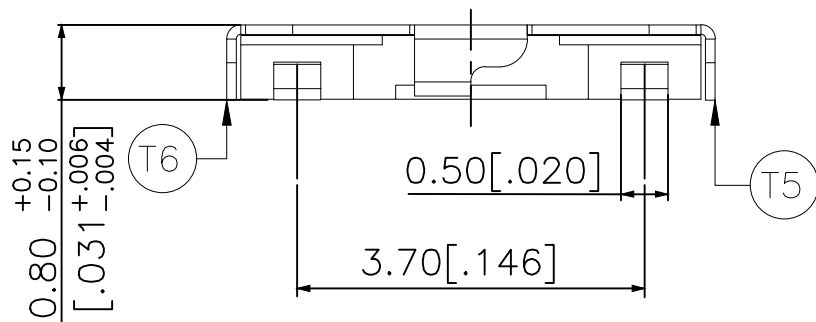


REVISIONS					
P	LTR	DESCRIPTION	DATE	DWN	APVD
	B	REVISED PER ECR-19-004770	10APR2019	SR	DD


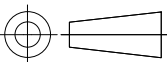


P.C.B. LAYOUT



CIRCUIT DIAGRAM

260±50	MSLPT5252AL4TR	2337242-3
160±50	MSLPT5252AL3TR	2337242-2
100±50	MSLPT5252AL2TR	2337242-1
ACTUATION FORCE (gf)	SMART PART NUMBER	PART NUMBER

THIS DRAWING IS A CONTROLLED DOCUMENT.		DWN GANESH C M 04JUL2018		<div>TE Connectivity Ltd.</div>				
		CHK ALEXANDER SHARPE 04JUL2018						
DIMENSIONS: mm [INCHES]		TOLERANCES UNLESS OTHERWISE SPECIFIED:		APVD ALEXANDER SHARPE 04JUL2018		NAME		
<div></div>		0 PLC ± —		SWITCH, TACTILE, LOW-PROFILE, MINI, 5.2 x 5.2 x 0.8, J BEND —				
		1 PLC ± —						
		2 PLC ± 0.20 [.008]						
		3 PLC ± —						
4 PLC ± —		PRODUCT SPEC		SIZECAGE CODEDRAWING NORESTRICTED TO				
ANGLES ± —		—						
APPLICATION SPEC		—		A300779C-2337242—				
—		—						
MATERIAL		FINISH		WEIGHT		—		
—		—		—		—		
CUSTOMER DRAWING						SCALE	SHEET	REV
						NTS	1 of 3	B

THIS DRAWING IS UNPUBLISHED.	RELEASED FOR PUBLICATION
© COPYRIGHT — TE Connectivity Ltd.	ALL RIGHTS RESERVED.

NOTES:

1. MATERIALS:

TERMINAL: COPPER ALLOY, SILVER OVER NICKEL FINISH  
BASE: THERMOPLASTIC, BLACK  
ACTUATOR: POLYTETRAFLUOROETHYLENE  
CONTACT: STAINLESS STEEL, SILVER OVER NICKEL FINISH  
COVER: NICKEL SILVER

2. COMPLIANCE:

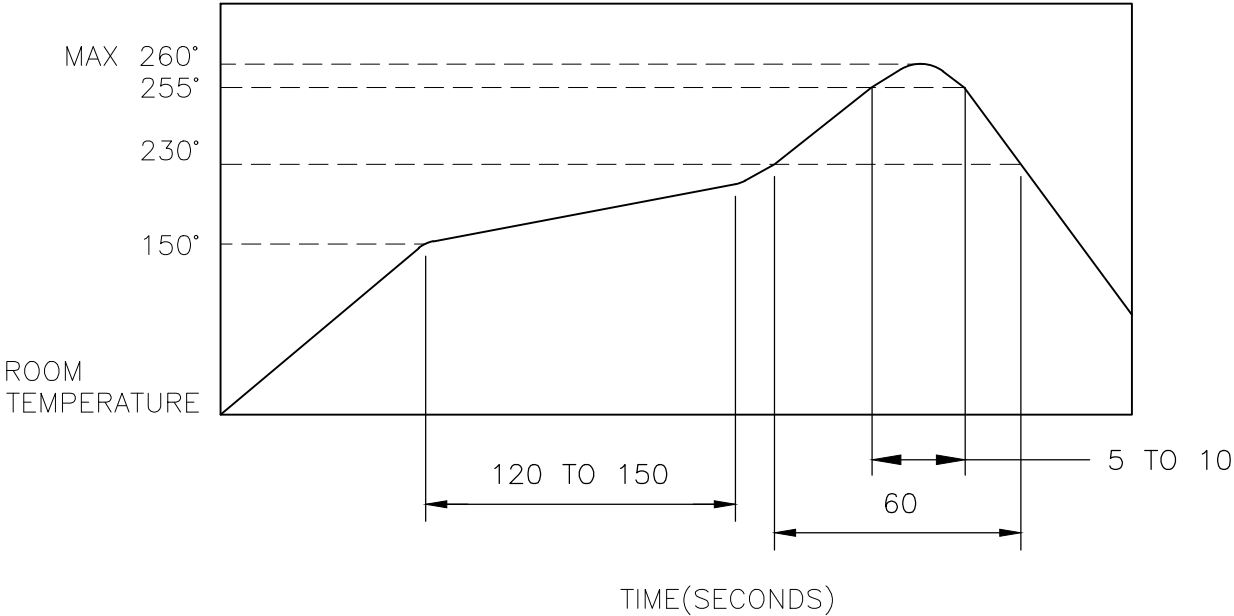
ALL MATERIALS AND FINISHES SHALL COMPLY WITH EU  
DIRECTIVE 2002/95/EC OF 27JAN2003(RoHS)

3. SPECIFICATIONS:

RATING: 50 mA, 12V DC  
CONTACT RESISTANCE: 100mΩ MAXIMUM (INITIAL)  
INSULATION RESISTANCE: 100MΩ MINIMUM (INITIAL)  
DIELECTRIC STRENGTH: 250V AC, 1 MINUTE  
OPERATING LIFE: 2337242-1 (100gf) = 1,000,000 CYCLES WITH LOAD  
2337242-2 (160gf) = 1,000,000 CYCLES WITH LOAD  
2337242-3 (260gf) = 200,000 CYCLES WITH LOAD  
TRAVEL:  $0.25^{+0.1}_{-0.2}$  [ $0.10^{+0.004}_{-0.008}$ ]  
ACTUATION FORCE: 2337242-1 = 100±50gf  
2337242-2 = 160±50gf  
2337242-3 = 260±50gf  
OPERATING TEMPERATURE: -25° TO 70°C  
STORAGE TEMPERATURE: -30° TO 80°C

4. SOLDER CONDITIONS :

SMT:



THE CONDITON NOTED ABOVE IS THE TEMPERATURE OF THE COPPER FOIL ON THE SURFACE OF THE PCB. THERE ARE CASES WHERE THE TEMPERATURE OF THE BOARD GREATLY DIFFERS FROM THE SURFACE OF THE SWITCH. DO NOT ALLOW THE SURFACE TEMPERATURE OF THE SWITCH TO EXCEED 260°C.

REVISIONS					
P	LTR	DESCRIPTION	DATE	DWN	APVD
	—	SEE SHEET 1	—	—	—

MANUAL SOLDERING:

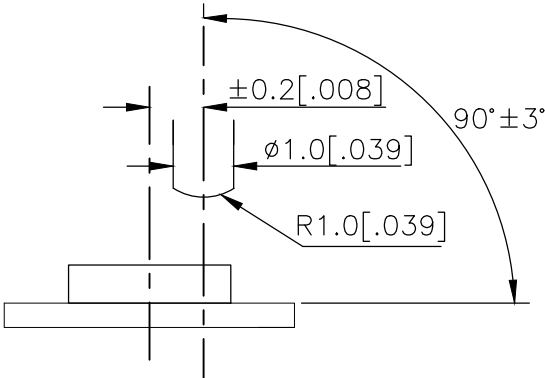
SOLDERING TEMPERATURE	350°C MAXIMUM
CONTINUOUS SOLDERING TIME	5 SECONDS MAXIMUM


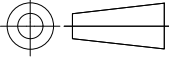
HANDLING PRECAUTIONS:

1. CARE SHOULD BE EXERCISED SO THAT FLUX FROM THE TOP SURFACE OF THE PRINTED CIRCUIT BOARD DOES NOT ADHERE TO THE SWITCH.
2. DO NOT WASH THE SWITCH

5. OPERATING PRECAUTIONS:

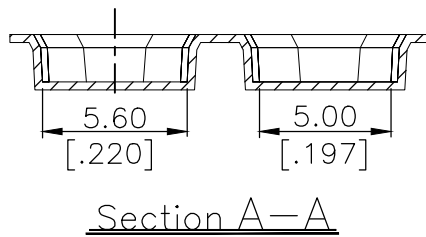
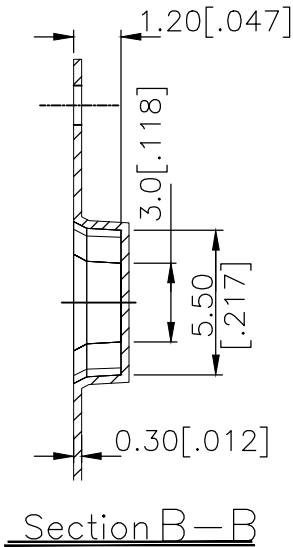
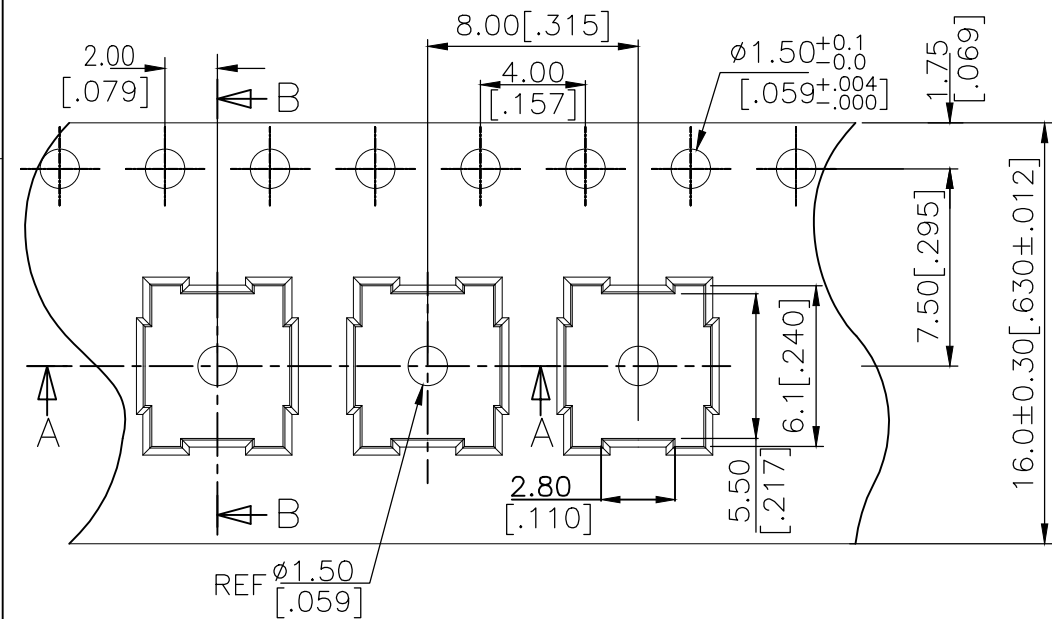
1. DO NOT ACTUATE THE SWITCH WITH EXCESSIVE FORCE
2. DISCONTINUE FORCE AFTER THE SWITCH HAS BEEN ACTUATED SO AS TO AVOID DEFORMATION OF THE COMPONENTS OF THE SWITCH. DEFORMATION OF THE COMPONENTS MAY CAUSE THE SWITCH TO MALFUNCTION.
3. ALIGN THE PLUNGER WITH THE SWITCH TO INSURE PROPER OPERATION



THIS DRAWING IS A CONTROLLED DOCUMENT.		DWN GANESH C M 04JUL2018	 TE Connectivity Ltd.		
		CHK ALEXANDER SHARPE 04JUL2018			
DIMENSIONS: mm [INCHES]	TOLERANCES UNLESS OTHERWISE SPECIFIED:	APVD ALEXANDER SHARPE 04JUL2018	NAME SWITCH, TACTILE, LOW-PROFILE, MINI, 5.2 x 5.2 x 0.8, J BEND		
		PRODUCT SPEC	—		
	0 PLC ± — 1 PLC ± — 2 PLC ± 0.20 [.008] 3 PLC ± — 4 PLC ± — ANGLES ± —	APPLICATION SPEC	—		
		—	SIZE A3	CAGE CODE 00779	DRAWING NO C-2337242
MATERIAL —	FINISH —	WEIGHT	RESTRICTED TO —		
		CUSTOMER DRAWING	SCALE NTS	SHEET 2 OF 3	REV B

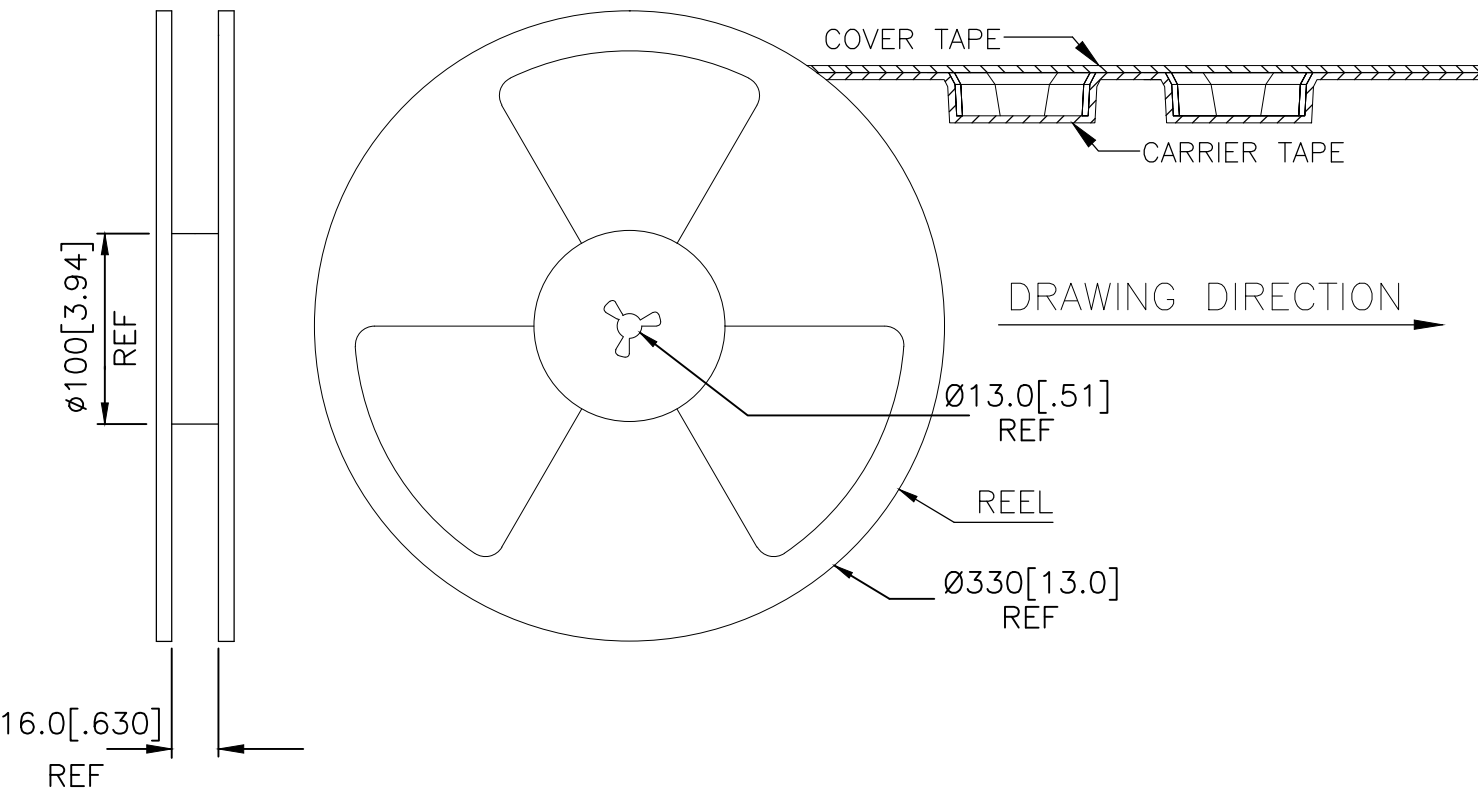
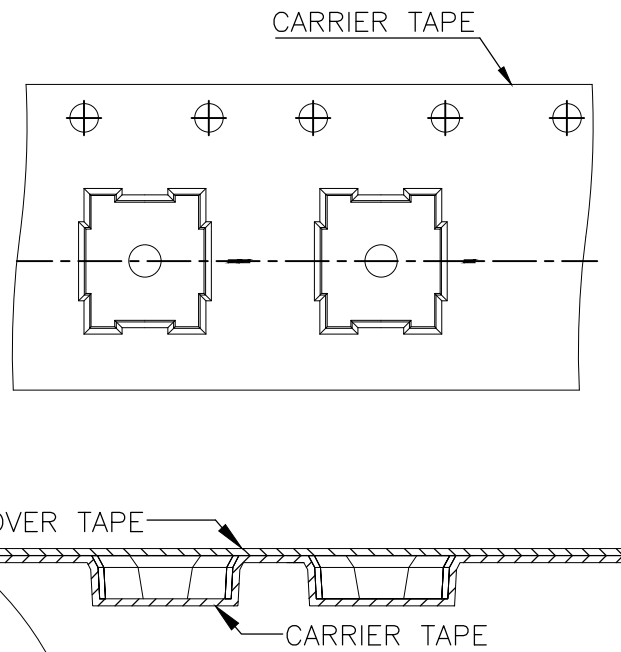
REVISIONS					
P	LTR	DESCRIPTION	DATE	DWN	APVD
	—	SEE SHEET 1	—	—	—


THE DIMENSIONS OF CARRIER TAPE AND REEL:



6. PACKAGING:
1. THE TAPE AND REEL ARE SHOWN FOR CUSTOMER APPLICATION REFERENCE. PACKAGING NOTES 3 AND 4 ARE REQUIRED BUT NOT ILLUSTRATED.
  2. 4,000 SWITCHES PER REEL.
  3. THE REEL, DESICCANT POUCH AND HUMIDITY CARD ARE SEALED IN A MOISTURE BARRIER BAG PER THE CURRENT REVISION OF IPC/JEDEC J-STD-033, MSL 2A REQUIREMENTS.
  4. THE MOISTURE BARRIER BAG IS LABELED PER THE CURRENT REVISION OF IPC/JEDEC J-STD-033, MSL 2A REQUIREMENTS.

ORIENTATION OF PILOT HOLES



THIS DRAWING IS A CONTROLLED DOCUMENT.		DWN GANESH C M 04JUL2018	 TE Connectivity Ltd.		
		CHK ALEXANDER SHARPE 04JUL2018			
		APVD ALEXANDER SHARPE 04JUL2018	NAME SWITCH, TACTILE, LOW-PROFILE, MINI, 5.2 x 5.2 x 0.8, J BEND		
		PRODUCT SPEC			
		APPLICATION SPEC			
		WEIGHT	SIZE A3	CAGE CODE 00779	DRAWING NO C-2337242
		CUSTOMER DRAWING	SCALE NTS	SHEET 3 OF 3	REV B

# Mouser Electronics

Authorized Distributor

Click to View Pricing, Inventory, Delivery & Lifecycle Information:

[TE Connectivity:](#)

[MSLPT5252AL3TR](#)