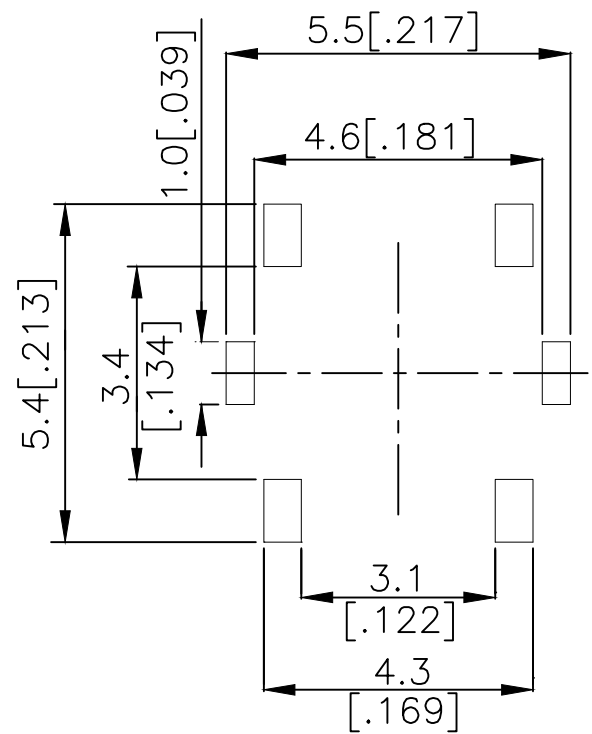
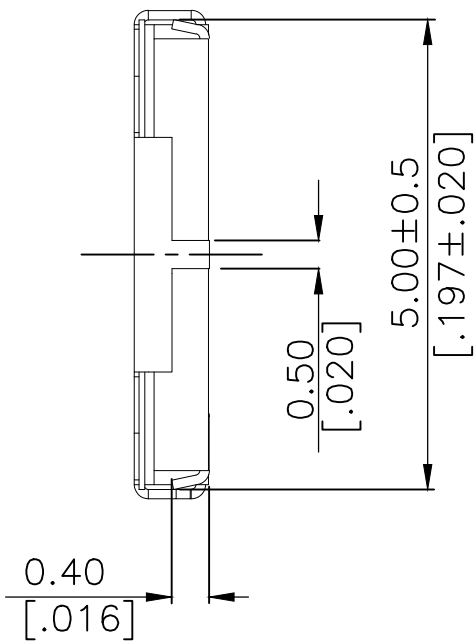
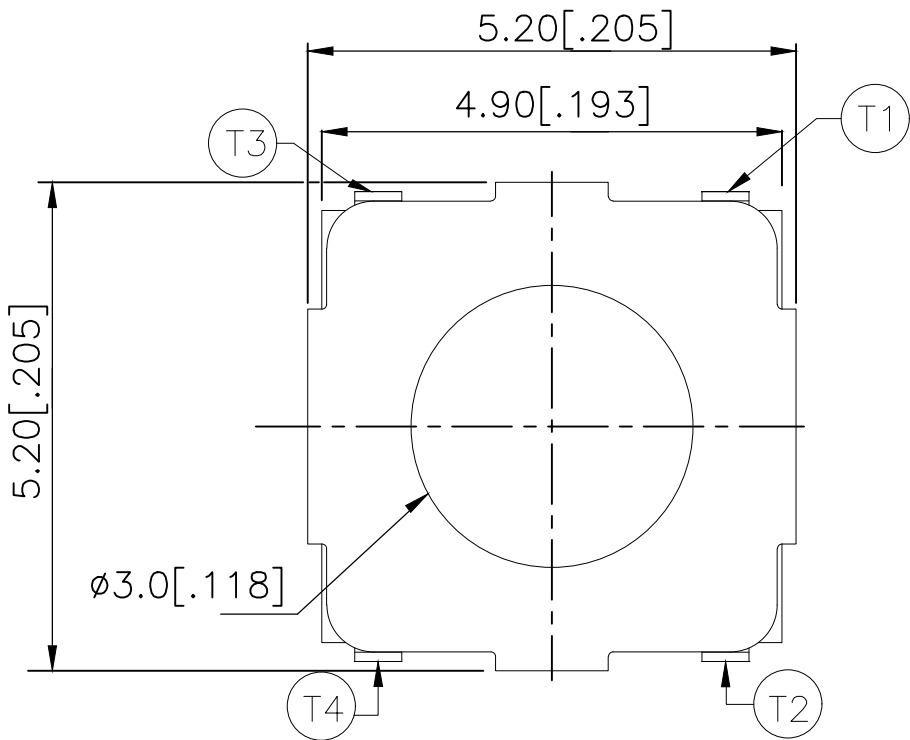
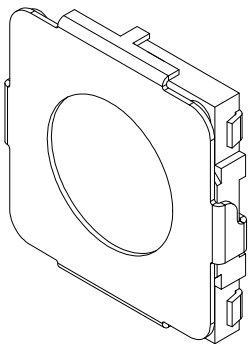
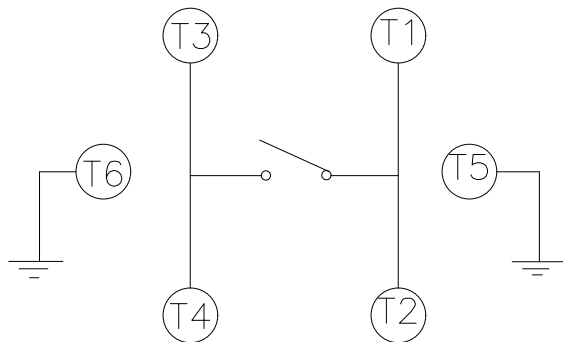


REVISIONS					
P	LTR	DESCRIPTION	DATE	DWN	APVD
	B	REVISED PER ECR-19-004770	10APR2019	SR	DD

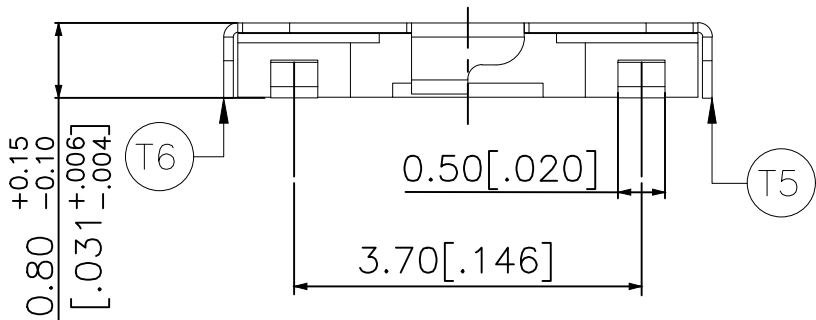



P.C.B. LAYOUT



CIRCUIT DIAGRAM

260±50	MSLPT5252AL4TR	2337242-3
160±50	MSLPT5252AL3TR	2337242-2
100±50	MSLPT5252AL2TR	2337242-1
ACTUATION FORCE (gf)	SMART PART NUMBER	PART NUMBER



THIS DRAWING IS A CONTROLLED DOCUMENT.		DWN	GANESH C M	04JUL2018	 TE Connectivity Ltd.	
		CHK	ALEXANDER SHARPE	04JUL2018		
		APVD	ALEXANDER SHARPE	04JUL2018		
		PRODUCT SPEC	—			
		APPLICATION SPEC	—		NAME SWITCH, TACTILE, LOW-PROFILE, MINI, 5.2 x 5.2 x 0.8, J BEND	
		WEIGHT	—			
		CUSTOMER DRAWING	SCALE	NTS	SHEET	1 of 3
					REV	B

THIS DRAWING IS UNPUBLISHED.	RELEASED FOR PUBLICATION - , - .
© COPYRIGHT — TE Connectivity Ltd.	ALL RIGHTS RESERVED.

NOTES:

1. MATERIALS:

TERMINAL: COPPER ALLOY, SILVER OVER NICKEL FINISH
BASE: THERMOPLASTIC, BLACK
ACTUATOR: POLYTETRAFLUOROETHYLENE
CONTACT: STAINLESS STEEL, SILVER OVER NICKEL FINISH
COVER: NICKEL SILVER

2. COMPLIANCE:

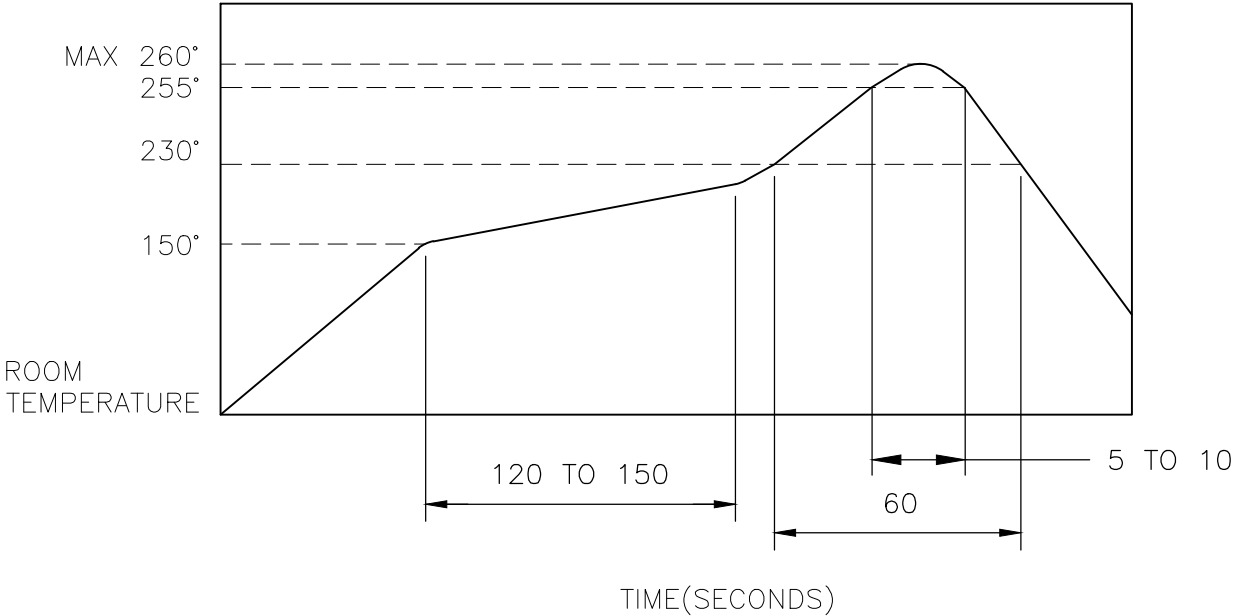
ALL MATERIALS AND FINISHES SHALL COMPLY WITH EU
DIRECTIVE 2002/95/EC OF 27JAN2003(RoHS)

3. SPECIFICATIONS:

RATING: 50 mA, 12V DC
CONTACT RESISTANCE: 100mΩ MAXIMUM (INITIAL)
INSULATION RESISTANCE: 100MΩ MINIMUM (INITIAL)
DIELECTRIC STRENGTH: 250V AC, 1 MINUTE
OPERATING LIFE: 2337242-1 (100gf) = 1,000,000 CYCLES WITH LOAD
2337242-2 (160gf) = 1,000,000 CYCLES WITH LOAD
2337242-3 (260gf) = 200,000 CYCLES WITH LOAD
TRAVEL: $0.25^{+0.1}_{-0.2}$ [$0.10^{+0.004}_{-0.008}$]
ACTUATION FORCE: 2337242-1 = 100±50gf
2337242-2 = 160±50gf
2337242-3 = 260±50gf
OPERATING TEMPERATURE: -25° TO 70°C
STORAGE TEMPERATURE: -30° TO 80°C

4. SOLDER CONDITIONS :

SMT:



THE CONDITON NOTED ABOVE IS THE TEMPERATURE OF THE COPPER FOIL ON THE SURFACE OF THE PCB. THERE ARE CASES WHERE THE TEMPERATURE OF THE BOARD GREATLY DIFFERS FROM THE SURFACE OF THE SWITCH. DO NOT ALLOW THE SURFACE TEMPERATURE OF THE SWITCH TO EXCEED 260°C.

REVISIONS					
P	LTR	DESCRIPTION	DATE	DWN	APVD
	-	SEE SHEET 1	-	-	-

MANUAL SOLDERING:

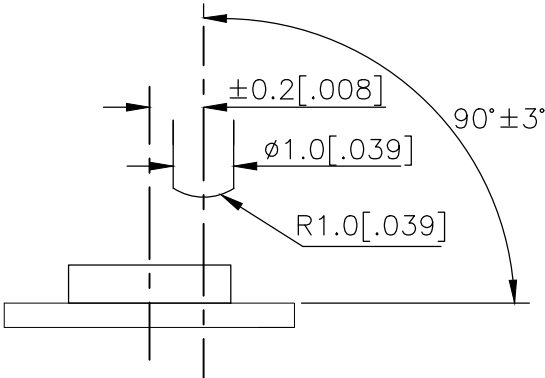
SOLDERING TEMPERATURE	350°C MAXIMUM
CONTINUOUS SOLDERING TIME	5 SECONDS MAXIMUM

HANDLING PRECAUTIONS:

1. CARE SHOULD BE EXERCISED SO THAT FLUX FROM THE TOP SURFACE OF THE PRINTED CIRCUIT BOARD DOES NOT ADHERE TO THE SWITCH.
2. DO NOT WASH THE SWITCH

5. OPERATING PRECAUTIONS:

1. DO NOT ACTUATE THE SWITCH WITH EXCESSIVE FORCE
2. DISCONTINUE FORCE AFTER THE SWITCH HAS BEEN ACTUATED SO AS TO AVOID DEFORMATION OF THE COMPONENTS OF THE SWITCH. DEFORMATION OF THE COMPONENTS MAY CAUSE THE SWITCH TO MALFUNCTION.
3. ALIGN THE PLUNGER WITH THE SWITCH TO INSURE PROPER OPERATION



THIS DRAWING IS A CONTROLLED DOCUMENT.		DWN GANESH C M 04JUL2018	TE Connectivity Ltd.		
		CHK ALEXANDER SHARPE 04JUL2018			
DIMENSIONS: mm [INCHES]	TOLERANCES UNLESS OTHERWISE SPECIFIED:	APVD ALEXANDER SHARPE 04JUL2018	NAME SWITCH, TACTILE, LOW-PROFILE, MINI, 5.2 x 5.2 x 0.8, J BEND		
		PRODUCT SPEC	-		
	0 PLC ± - 1 PLC ± - 2 PLC ± 0.20 [.008] 3 PLC ± - 4 PLC ± - ANGLES ± -	APPLICATION SPEC	SIZE A3		
		WEIGHT	CAGE CODE 00779		
MATERIAL -	FINISH -	DRAWING NO C-2337242		RESTRICTED TO -	
CUSTOMER DRAWING			SCALE NTS	SHEET 2 OF 3	REV B

Mouser Electronics

Authorized Distributor

Click to View Pricing, Inventory, Delivery & Lifecycle Information:

[TE Connectivity:](#)

[MSLPT5252AL4TR](#)