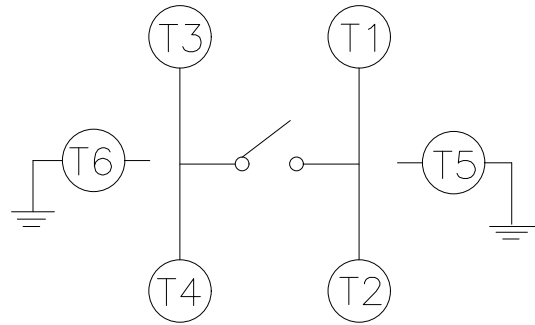
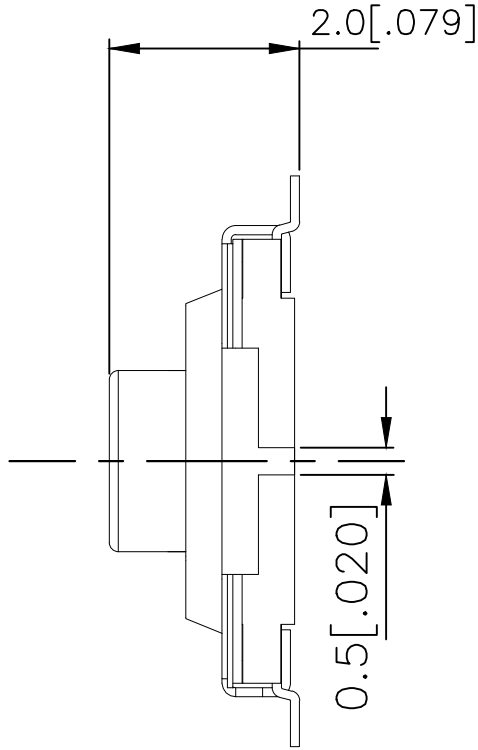
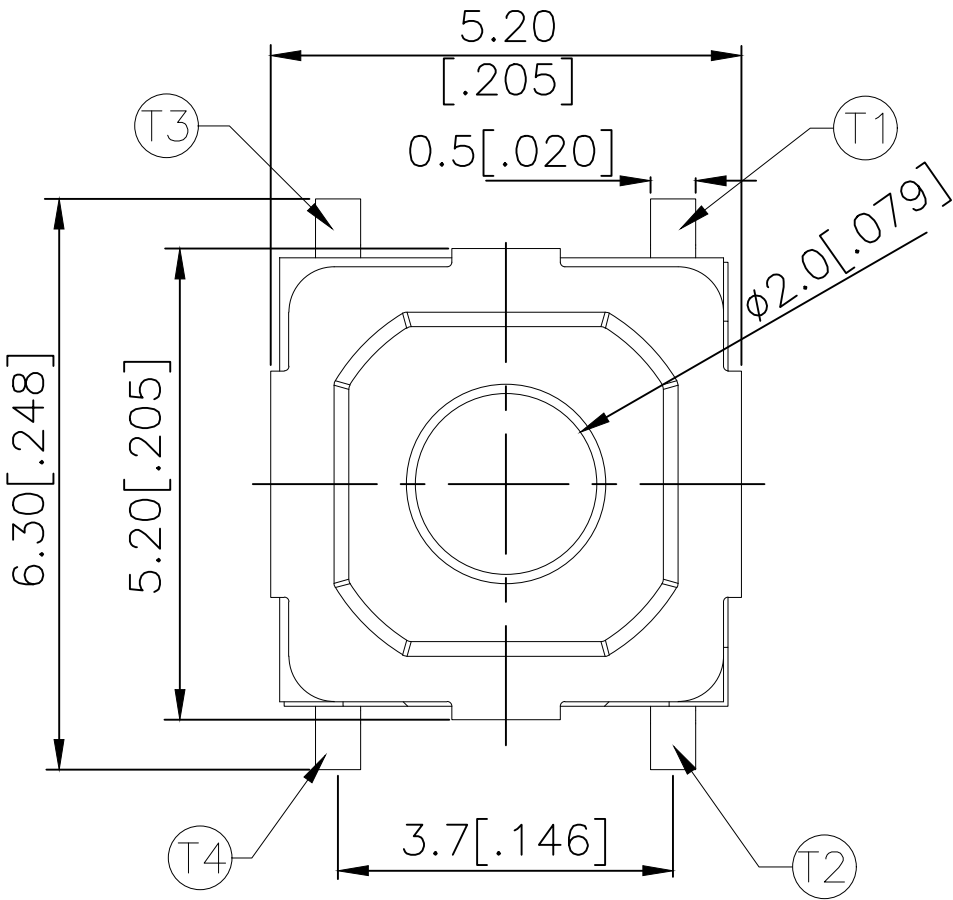
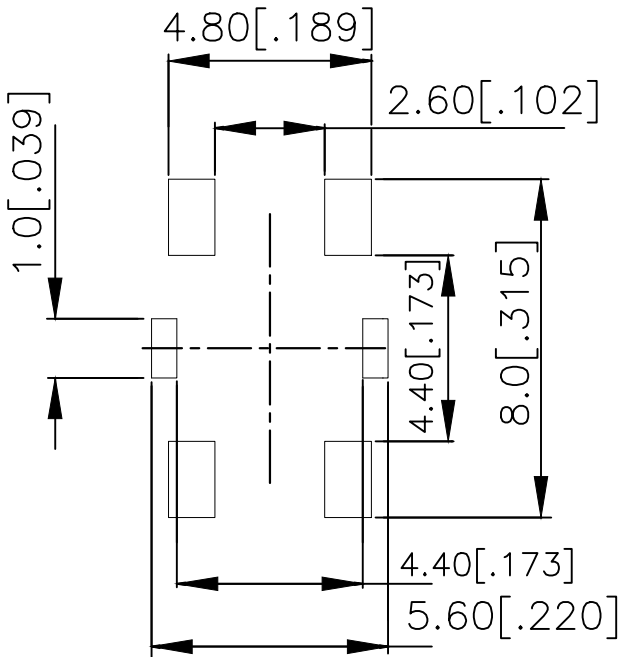
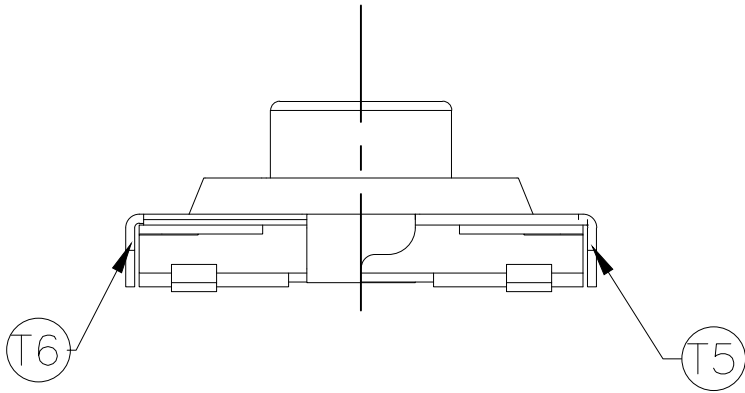


REVISIONS					
P	LTR	DESCRIPTION	DATE	DWN	APVD
	B	REVISED PER ECR-19-004770	10APR2019	SR	DD


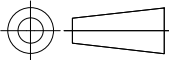


CIRCUIT DIAGRAM



P.C.B. LAYOUT

WHITE	260±50	MSLPT5252CG4WTR	2337238-4
BLACK	160±50	MSLPT5252CG3BTR	2337238-3
WHITE	100±50	MSLPT5252CG2WTR	2337238-2
BLACK	70±50	MSLPT5252CG1BTR	2337238-1
ACTUATOR COLOR	ACTUATION FORCE (gf)	SMART PART NUMBER	PART NUMBER

THIS DRAWING IS A CONTROLLED DOCUMENT.		DWN GANESH C M 04JUL2018	<div> TE Connectivity Ltd.</div>				
		CHK ALEXANDER SHARPE 04JUL2018					
DIMENSIONS: mm [INCHES]	TOLERANCES UNLESS OTHERWISE SPECIFIED:	APVD ALEXANDER SHARPE 04JUL2018	NAME  SWITCH, TACTILE, LOW-PROFILE, MINI, 5.2 x 5.2 x 2.0, GULLWING  —				
	0 PLC ± — 1 PLC ± — 2 PLC ± 0.2 [.008] 3 PLC ± — 4 PLC ± — ANGLES ± —	PRODUCT SPEC  —					
MATERIAL  —	FINISH  —	APPLICATION SPEC  —	SIZE	CAGE CODE	DRAWING NO	RESTRICTED TO  —	
		WEIGHT	A3	00779	C=2337238		
CUSTOMER DRAWING					SCALE NTS	SHEET 1 of 3	REV B

THIS DRAWING IS UNPUBLISHED.	RELEASED FOR PUBLICATION
© COPYRIGHT — TE Connectivity Ltd.	ALL RIGHTS RESERVED.

NOTES:

1. MATERIALS:

TERMINAL: COPPER ALLOY, SILVER OVER NICKEL FINISH  
BASE: THERMOPLASTIC, BLACK  
ACTUATOR: THERMOPLASTIC, SEE TABLE, SHEET 1 OF 3, FOR COLOR  
TAPE: POLYTETRAFLUOROETHYLENE  
CONTACT: STAINLESS STEEL, SILVER OVER NICKEL FINISH  
COVER: NICKEL SILVER

2. COMPLIANCE:

ALL MATERIALS AND FINISHES SHALL COMPLY WITH EU  
DIRECTIVE 2002/95/EC OF 27JAN2003(RoHS)

3. SPECIFICATIONS:

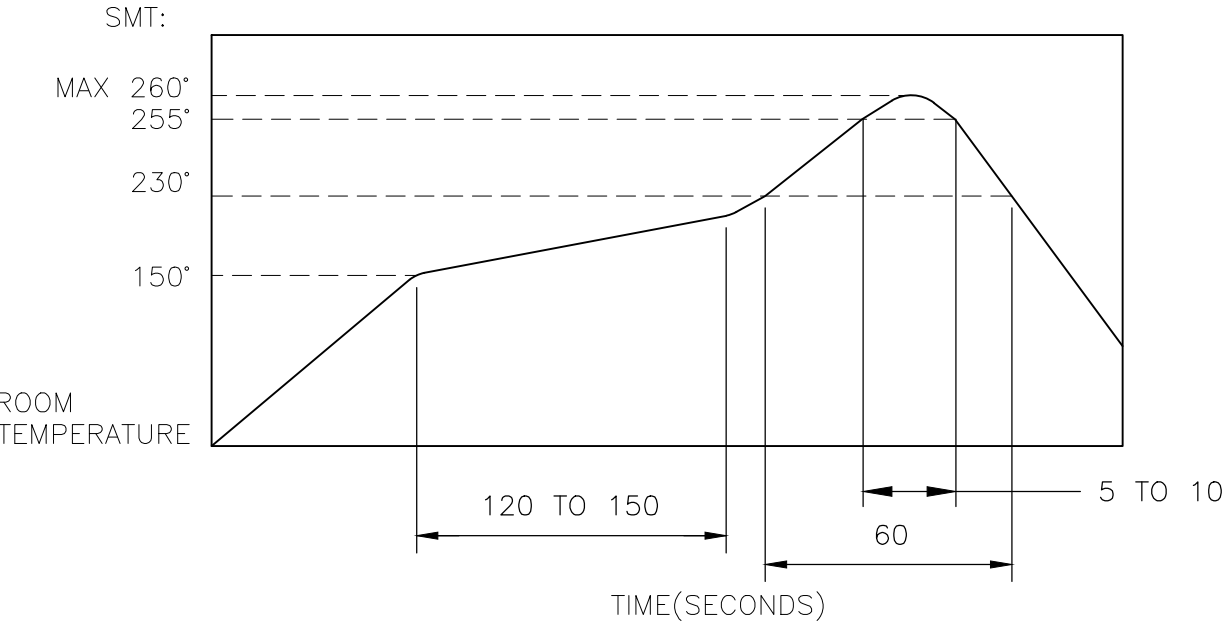
RATING: 50 mA, 12V DC  
CONTACT RESISTANCE: 100mΩ MAXIMUM (INITIAL)  
INSULATION RESISTANCE: 100MΩ MINIMUM (INITIAL)  
DIELECTRIC STRENGTH: 250V AC, 1 MINUTE  
OPERATING LIFE: 2337238-1 (70gf) = 1,000,000 CYCLES WITH LOAD  
2337238-2 (100gf) = 1,000,000 CYCLES WITH LOAD  
2337238-3 (160gf) = 1,000,000 CYCLES WITH LOAD  
2337238-4 (260gf) = 200,000 CYCLES WITH LOAD

TRAVEL: 0.25<sup>+0.1</sup><sub>-0.2</sub> [.010<sup>+0.004</sup><sub>-0.008</sub>]

ACTUATION FORCE: 2337238-1 = 70±50gf  
2337238-2 = 100±50gf  
2337238-3 = 160±50gf  
2337238-4 = 260±50gf

OPERATING TEMPERATURE: -25° TO 70°C  
STORAGE TEMPERATURE: -30° TO 80°C

4. SOLDER CONDITIONS :



THE CONDITON NOTED ABOVE IS THE TEMPERATURE OF THE COPPER FOIL  
ON THE SURFACE OF THE PCB. THERE ARE CASES WHERE THE TEMPERATURE  
OF THE BOARD GREATLY DIFFERS FROM THE SURFACE OF THE SWITCH. DO  
NOT ALLOW THE SURFACE TEMPERATURE OF THE SWITCH TO EXCEED 260°C.

REVISIONS

P	LTR	DESCRIPTION	DATE	DWN	APVD
	—	SEE SHEET 1	—	—	—

MANUAL SOLDERING:

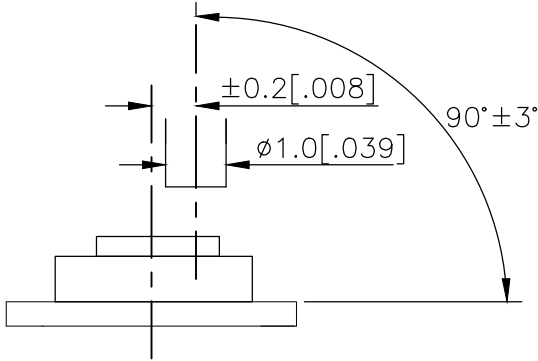
SOLDERING TEMPERATURE	350°C MAXIMUM
CONTINUOUS SOLDERING TIME	5 SECONDS MAXIMUM

HANDLING PRECAUTIONS:

1. CARE SHOULD BE EXERCISED SO THAT FLUX FROM THE TOP SURFACE  
OF THE PRINTED CIRCUIT BOARD DOES NOT ADHERE TO THE SWITCH.
2. DO NOT WASH THE SWITCH

5. OPERATING PRECAUTIONS:

1. DO NOT ACTUATE THE SWITCH WITH EXCESSIVE FORCE
2. DISCONTINUE FORCE AFTER THE SWITCH HAS BEEN ACTUATED SO AS TO AVOID  
DEFORMATION OF THE COMPONENTS OF THE SWITCH. DEFORMATION OF THE  
COMPONENTS MAY CAUSE THE SWITCH TO MALFUNCTION.
3. ALIGN THE PLUNGER WITH THE SWITCH TO INSURE PROPER OPERATION



THIS DRAWING IS A CONTROLLED DOCUMENT.		DWN GANESH C M 04JUL2018	TE Connectivity Ltd.			
		CHK ALEXANDER SHARPE 04JUL2018				
DIMENSIONS: mm [INCHES]	TOLERANCES UNLESS OTHERWISE SPECIFIED:	APVD ALEXANDER SHARPE 04JUL2018	NAME SWITCH, TACTILE, LOW-PROFILE, MINI, 5.2 x 5.2 x 2.0, GULLWING			
		PRODUCT SPEC	—			
	0 PLC ± — 1 PLC ± — 2 PLC ± 0.2 [.008] 3 PLC ± — 4 PLC ± — ANGLES ± —	APPLICATION SPEC	—			
		—	SIZE A3	CAGE CODE 00779	DRAWING NO C-2337238	RESTRICTED TO —
MATERIAL —	FINISH —	WEIGHT	CUSTOMER DRAWING			
			SCALE NTS	SHEET 2 OF 3	REV B	



# Mouser Electronics

Authorized Distributor

Click to View Pricing, Inventory, Delivery & Lifecycle Information:

[TE Connectivity:](#)

[MSLPT5252CG1BTR](#)