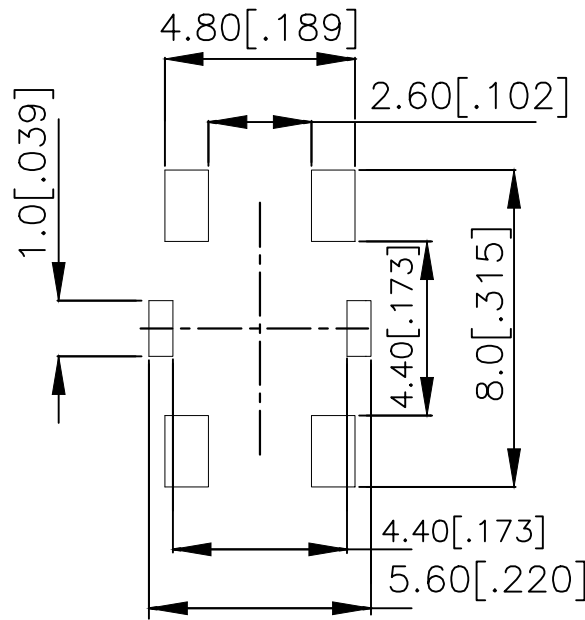
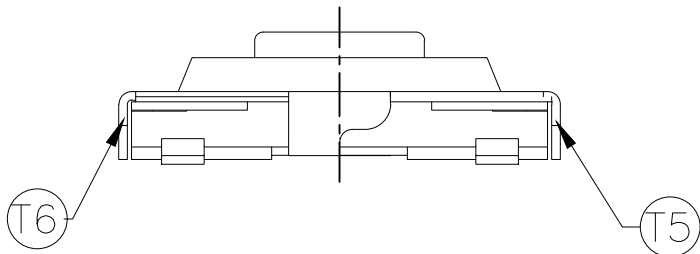
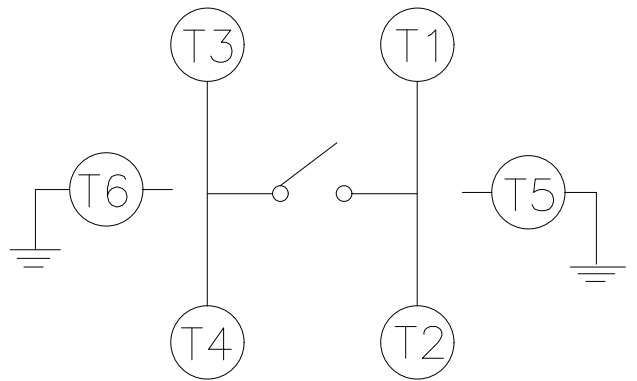
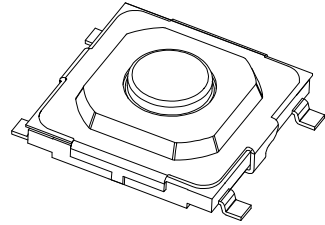
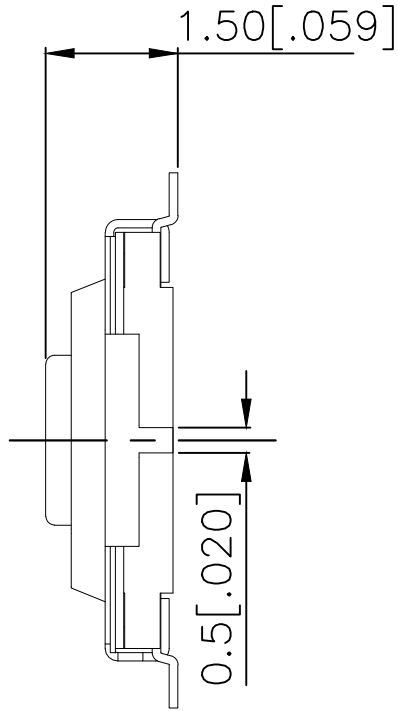
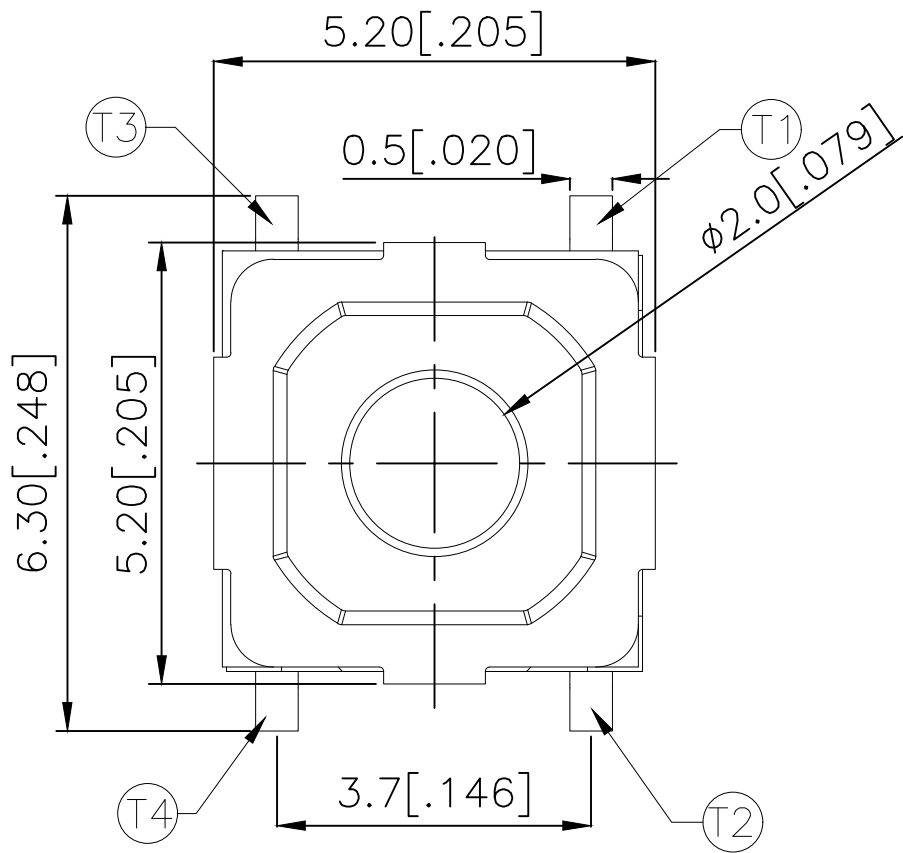



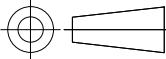
REVISIONS					
P	LTR	DESCRIPTION	DATE	DWN	APVD
	B	REVISED PER ECR-19-004770	10APR2019	SR	DD



P.C.B LAYOUT

CIRCUIT DIAGRAM

260±50	MSLPT5252BG4MTR	2337237-4
160±50	MSLPT5252BG3MTR	2337237-3
100±50	MSLPT5252BG2MTR	2337237-2
70±50	MSLPT5252BG1MTR	2337237-1
ACTUATION FORCE (gf)	SMART PART NUMBER	PART NUMBER

THIS DRAWING IS A CONTROLLED DOCUMENT.		DWN GANESH C M 04JUL2018	<div>TE Connectivity Ltd.</div>				
		CHK ALEXANDER SHARPE 04JUL2018					
DIMENSIONS: mm [INCHES]	TOLERANCES UNLESS OTHERWISE SPECIFIED:	APVD ALEXANDER SHARPE 04JUL2018	NAME SWITCH, TACTILE, LOW-PROFILE, MINI, 5.2 x 5.2 x 1.5, GULLWING —				
	0 PLC ± — 1 PLC ± — 2 PLC ± 0.2 [.008] 3 PLC ± — 4 PLC ± — ANGLES ± —	PRODUCT SPEC —					
MATERIAL —	FINISH —	APPLICATION SPEC —	SIZE	CAGE CODE	DRAWING NO	RESTRICTED TO —	
		WEIGHT	A3	00779	C-2337237		
CUSTOMER DRAWING					SCALE NTS	SHEET 1 of 3	REV B

THIS DRAWING IS UNPUBLISHED.	RELEASED FOR PUBLICATION - , - .
© COPYRIGHT — TE Connectivity Ltd.	ALL RIGHTS RESERVED.

NOTES:

1. MATERIALS:

TERMINAL: COPPER ALLOY, SILVER OVER NICKEL FINISH
BASE: THERMOPLASTIC, BLACK
ACTUATOR: STEEL, NICKEL FINISH
TAPE: POLYTETRAFLUOROETHYLENE
CONTACT: STAINLESS STEEL, SILVER OVER NICKEL FINISH
COVER: NICKEL SILVER

2. COMPLIANCE:

ALL MATERIALS AND FINISHES SHALL COMPLY WITH EU
DIRECTIVE 2002/95/EC OF 27JAN2003(RoHS)

3. SPECIFICATIONS:

RATING: 50 mA, 12V DC
CONTACT RESISTANCE: 100mΩ MAXIMUM (INITIAL)
INSULATION RESISTANCE: 100MΩ MINIMUM (INITIAL)
DIELECTRIC STRENGTH: 250V AC, 1 MINUTE
OPERATING LIFE: 2337237-1 (70gf) = 1,000,000 CYCLES WITH LOAD
2337237-2 (100gf) = 1,000,000 CYCLES WITH LOAD
2337237-3 (160gf) = 1,000,000 CYCLES WITH LOAD
2337237-4 (260gf) = 200,000 CYCLES WITH LOAD

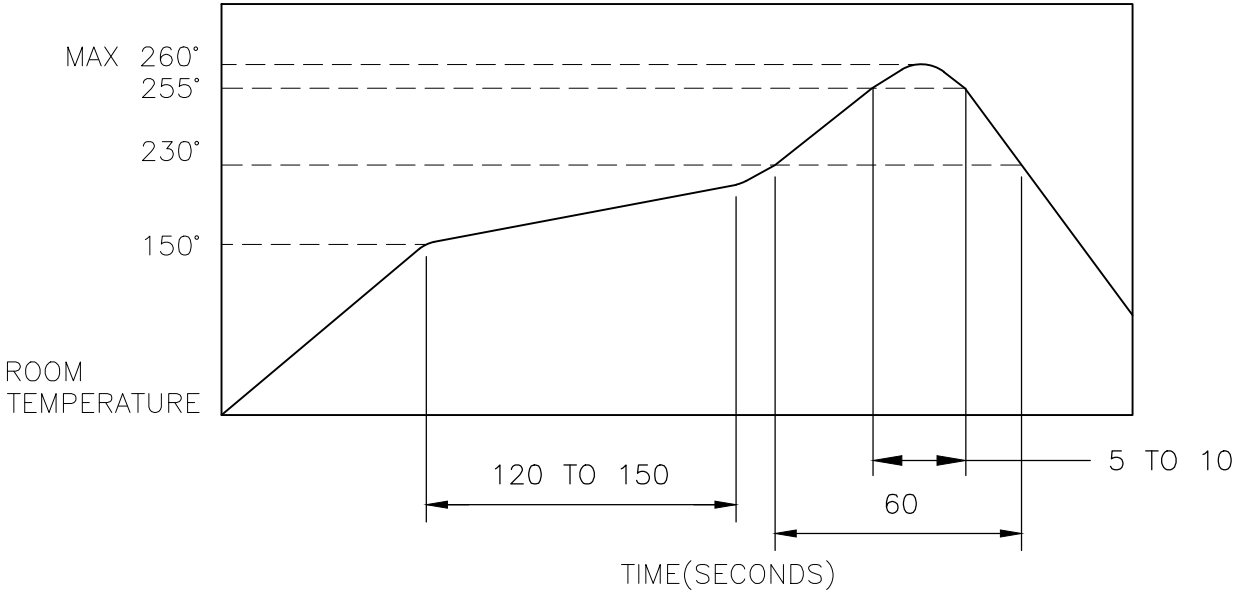
TRAVEL: 0.25^{+0.1}_{-0.2} [.010^{+0.004}_{-0.008}]

ACTUATION FORCE: 2337237-1 = 70±50gf
2337237-2 = 100±50gf
2337237-3 = 160±50gf
2337237-4 = 260±50gf

OPERATING TEMPERATURE: -25° TO 70°C
STORAGE TEMPERATURE: -30° TO 80°C

4. SOLDER CONDITIONS :

SMT:



THE CONDITON NOTED ABOVE IS THE TEMPERATURE OF THE COPPER FOIL ON THESURFACE OF THE PCB. THERE ARE CASES WHERE THE TEMPERATURE OF THE BOARD GREATLY DIFFERS FROM THE SURFACE OF THE SWITCH. DO NOT ALLOW THE SURFACE TEMPERATURE OF THE SWITCH TO EXCEED 260°C.

REVISIONS					
P	LTR	DESCRIPTION	DATE	DWN	APVD
	-	SEE SHEET 1	-	-	-

MANUAL SOLDERING:

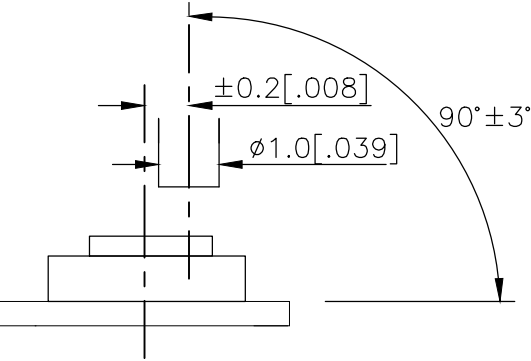
SOLDERING TEMPERATURE	350°C MAXIMUM
CONTINUOUS SOLDERING TIME	5 SECONDS MAXIMUM


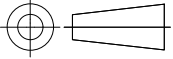
HANDLING PRECAUTIONS:

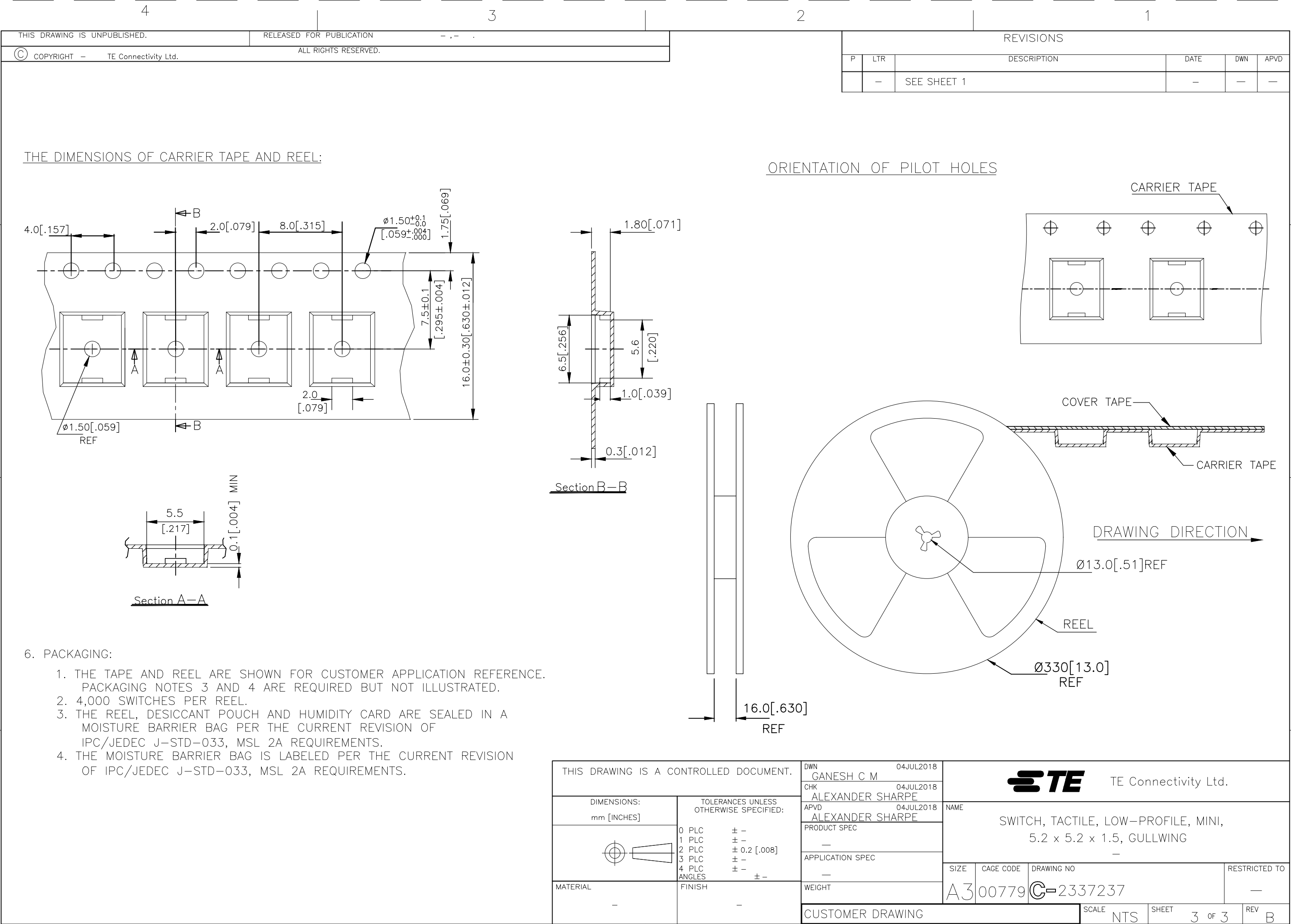
1. CARE SHOULD BE EXERCISED SO THAT FLUX FROM THE TOP SURFACE OF THE PRINTED CIRCUIT BOARD DOES NOT ADHERE TO THE SWITCH.
2. DO NOT WASH THE SWITCH

5. OPERATING PRECAUTIONS:

1. DO NOT ACTUATE THE SWITCH WITH EXCESSIVE FORCE
2. DISCONTINUE FORCE AFTER THE SWITCH HAS BEEN ACTUATED SO AS TO AVOID DEFORMATION OF THE COMPONENTS OF THE SWITCH. DEFORMATION OF THE COMPONENTS MAY CAUSE THE SWITCH TO MALFUNCTION.
3. ALIGN THE PLUNGER WITH THE SWITCH TO INSURE PROPER OPERATION



THIS DRAWING IS A CONTROLLED DOCUMENT.		DWN GANESH C M 04JUL2018	 TE Connectivity Ltd.			
		CHK ALEXANDER SHARPE 04JUL2018				
DIMENSIONS: mm [INCHES]	TOLERANCES UNLESS OTHERWISE SPECIFIED:	APVD ALEXANDER SHARPE 04JUL2018	NAME SWITCH, TACTILE, LOW-PROFILE, MINI, 5.2 x 5.2 x 1.5, GULLWING			
		PRODUCT SPEC	-			
	0 PLC ± - 1 PLC ± - 2 PLC ± 0.2 [.008] 3 PLC ± - 4 PLC ± - ANGLES ± -	APPLICATION SPEC	-			
		FINISH	-			
MATERIAL	-	WEIGHT	-			
CUSTOMER DRAWING		A3 00779		C=2337237		
		SCALE	NTS	SHEET	2 OF 3	REV B



1470-19 (1/15)

Mouser Electronics

Authorized Distributor

Click to View Pricing, Inventory, Delivery & Lifecycle Information:

[TE Connectivity:](#)

[MSLPT5252BG3MTR](#)