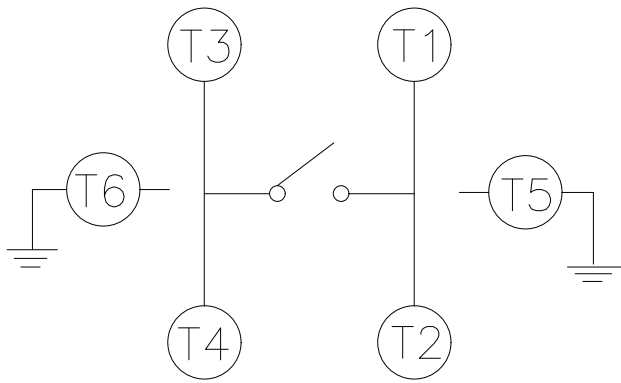
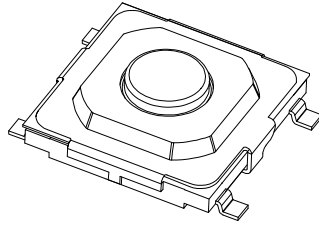
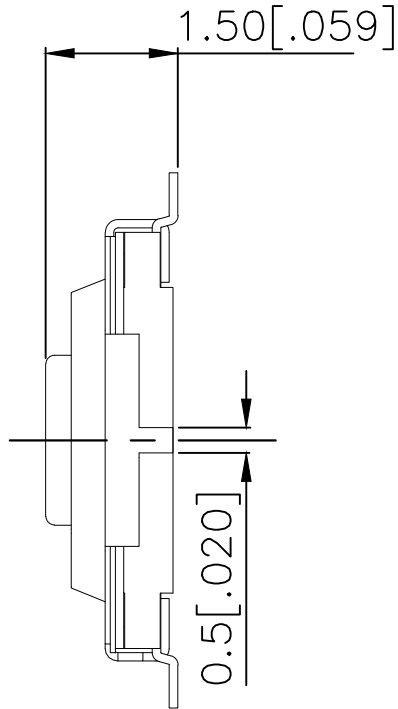
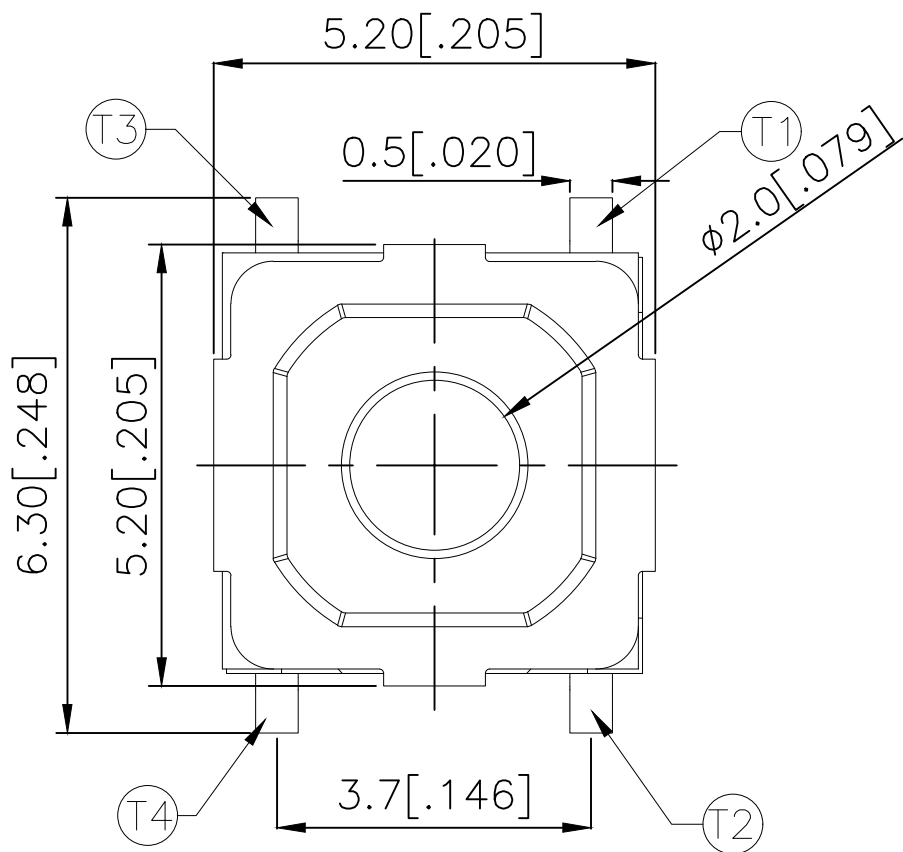
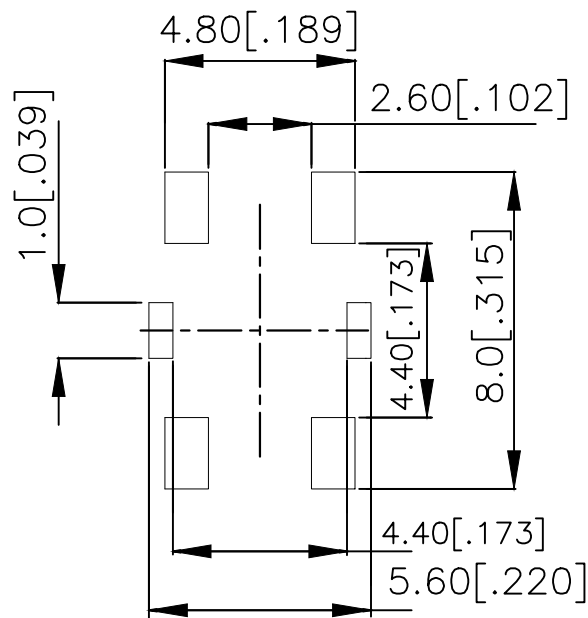
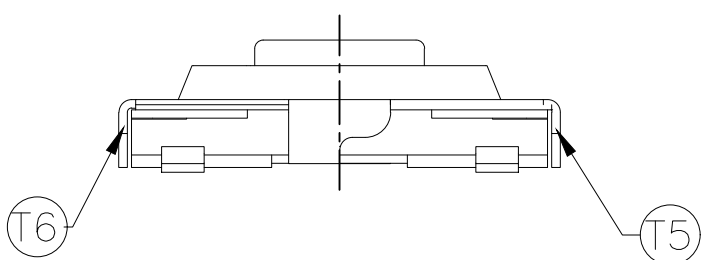


REVISIONS					
P	LTR	DESCRIPTION	DATE	DWN	APVD
	B	REVISED PER ECR-19-004770	10APR2019	SR	DD



CIRCUIT DIAGRAM



P.C.B LAYOUT

260±50	MSLPT5252BG4MTR	2337237-4
160±50	MSLPT5252BG3MTR	2337237-3
100±50	MSLPT5252BG2MTR	2337237-2
70±50	MSLPT5252BG1MTR	2337237-1
ACTUATION FORCE (gf)	SMART PART NUMBER	PART NUMBER

THIS DRAWING IS A CONTROLLED DOCUMENT.

DIMENSIONS:
mm [INCHES]

MATERIAL
-

TOLERANCES UNLESS OTHERWISE SPECIFIED:

0 PLC ± -

1 PLC ± -

2 PLC ± 0.2 [.008]

3 PLC ± -

4 PLC ± -

ANGLES ± -

FINISH -

DWN GANESH C M 04JUL2018

CHK ALEXANDER SHARPE 04JUL2018

APVD ALEXANDER SHARPE 04JUL2018

PRODUCT SPEC -

APPLICATION SPEC -

WEIGHT -

TE Connectivity Ltd.

NAME
SWITCH, TACTILE, LOW-PROFILE, MINI,
5.2 x 5.2 x 1.5, GULLWING

SIZE A3 CAGE CODE 00779 DRAWING NO C-2337237 RESTRICTED TO -

CUSTOMER DRAWING SCALE NTS SHEET 1 of 3 REV B

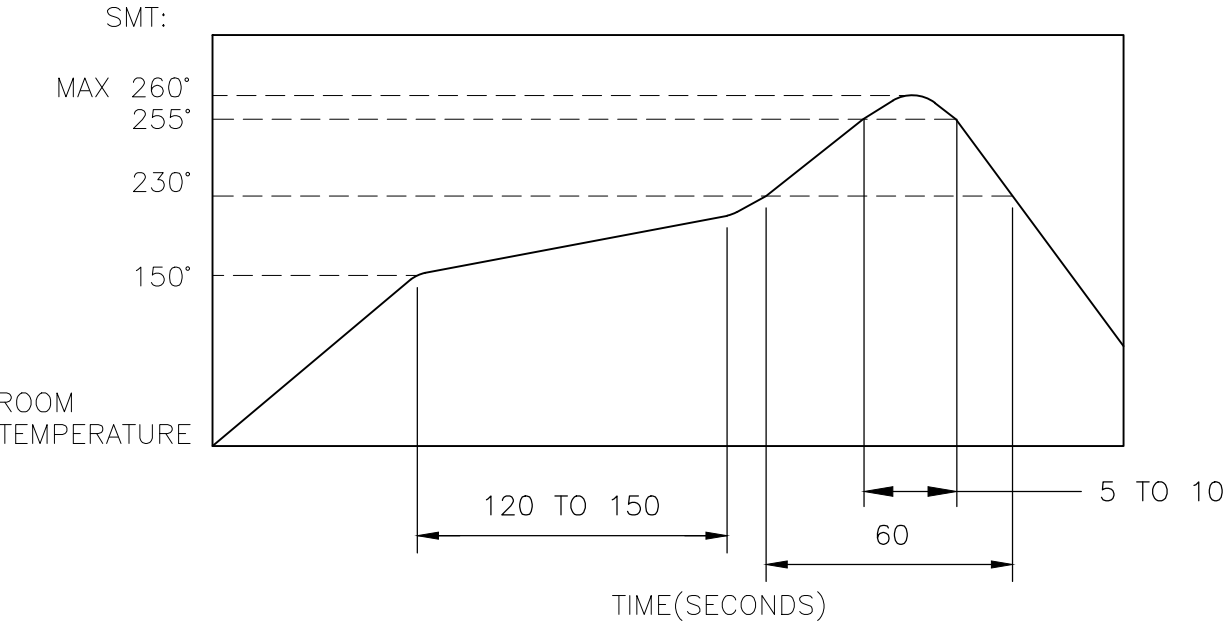
REVISIONS					
P	LTR	DESCRIPTION	DATE	DWN	APVD
	—	SEE SHEET 1	—	—	—

- NOTES:
1. MATERIALS:
- TERMINAL: COPPER ALLOY, SILVER OVER NICKEL FINISH
- BASE: THERMOPLASTIC, BLACK
- ACTUATOR: STEEL, NICKEL FINISH
- TAPE: POLYTETRAFLUOROETHYLENE
- CONTACT: STAINLESS STEEL, SILVER OVER NICKEL FINISH
- COVER: NICKEL SILVER

2. COMPLIANCE:
- ALL MATERIALS AND FINISHES SHALL COMPLY WITH EU DIRECTIVE 2002/95/EC OF 27JAN2003(RoHS)

3. SPECIFICATIONS:
- RATING: 50 mA, 12V DC
- CONTACT RESISTANCE: 100mΩ MAXIMUM (INITIAL)
- INSULATION RESISTANCE: 100MΩ MINIMUM (INITIAL)
- DIELECTRIC STRENGTH: 250V AC, 1 MINUTE
- OPERATING LIFE: 2337237-1 (70gf) = 1,000,000 CYCLES WITH LOAD
- 2337237-2 (100gf) = 1,000,000 CYCLES WITH LOAD
- 2337237-3 (160gf) = 1,000,000 CYCLES WITH LOAD
- 2337237-4 (260gf) = 200,000 CYCLES WITH LOAD
- TRAVEL: 0.25^{+0.1}_{-0.2} [.010^{+0.004}_{-0.008}]
- ACTUATION FORCE: 2337237-1 = 70±50gf
- 2337237-2 = 100±50gf
- 2337237-3 = 160±50gf
- 2337237-4 = 260±50gf
- OPERATING TEMPERATURE: -25° TO 70°C
- STORAGE TEMPERATURE: -30° TO 80°C

4. SOLDER CONDITIONS :



THE CONDITON NOTED ABOVE IS THE TEMPERATURE OF THE COPPER FOIL ON THESURFACE OF THE PCB. THERE ARE CASES WHERE THE TEMPERATURE OF THE BOARD GREATLY DIFFERS FROM THE SURFACE OF THE SWITCH. DO NOT ALLOW THE SURFACE TEMPERATURE OF THE SWITCH TO EXCEED 260°C.

MANUAL SOLDERING:

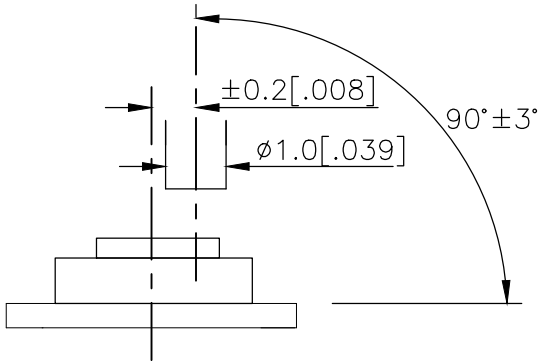
SOLDERING TEMPERATURE	350°C MAXIMUM
CONTINUOUS SOLDERING TIME	5 SECONDS MAXIMUM

HANDLING PRECAUTIONS:

1. CARE SHOULD BE EXERCISED SO THAT FLUX FROM THE TOP SURFACE OF THE PRINTED CIRCUIT BOARD DOES NOT ADHERE TO THE SWITCH.
2. DO NOT WASH THE SWITCH

5. OPERATING PRECAUTIONS:

1. DO NOT ACTUATE THE SWITCH WITH EXCESSIVE FORCE
2. DISCONTINUE FORCE AFTER THE SWITCH HAS BEEN ACTUATED SO AS TO AVOID DEFORMATION OF THE COMPONENTS OF THE SWITCH. DEFORMATION OF THE COMPONENTS MAY CAUSE THE SWITCH TO MALFUNCTION.
3. ALIGN THE PLUNGER WITH THE SWITCH TO INSURE PROPER OPERATION



THIS DRAWING IS A CONTROLLED DOCUMENT.		DWN 04JUL2018 GANESH C M	TE Connectivity Ltd.		
		CHK 04JUL2018 ALEXANDER SHARPE			
DIMENSIONS: mm [INCHES]	TOLERANCES UNLESS OTHERWISE SPECIFIED:	APVD 04JUL2018 ALEXANDER SHARPE	NAME		
		PRODUCT SPEC	SWITCH, TACTILE, LOW-PROFILE, MINI, 5.2 x 5.2 x 1.5, GULLWING		
	0 PLC ± — 1 PLC ± — 2 PLC ± 0.2 [.008] 3 PLC ± — 4 PLC ± — ANGLES ± —	APPLICATION SPEC	—		
		—	SIZE	CAGE CODE	DRAWING NO
MATERIAL	FINISH	WEIGHT	A300779 C-2337237		
—		CUSTOMER DRAWING		SCALE NTS	SHEET 2 OF 3
				REV B	

Mouser Electronics

Authorized Distributor

Click to View Pricing, Inventory, Delivery & Lifecycle Information:

[TE Connectivity:](#)

[MSLPT5252BG2MTR](#)