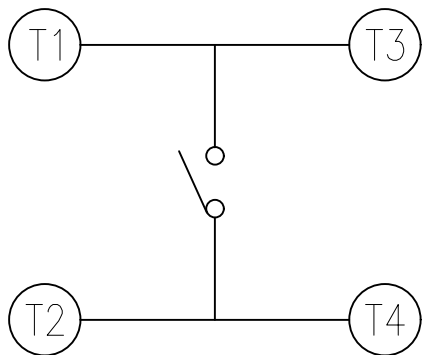
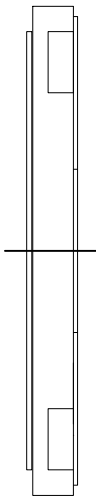
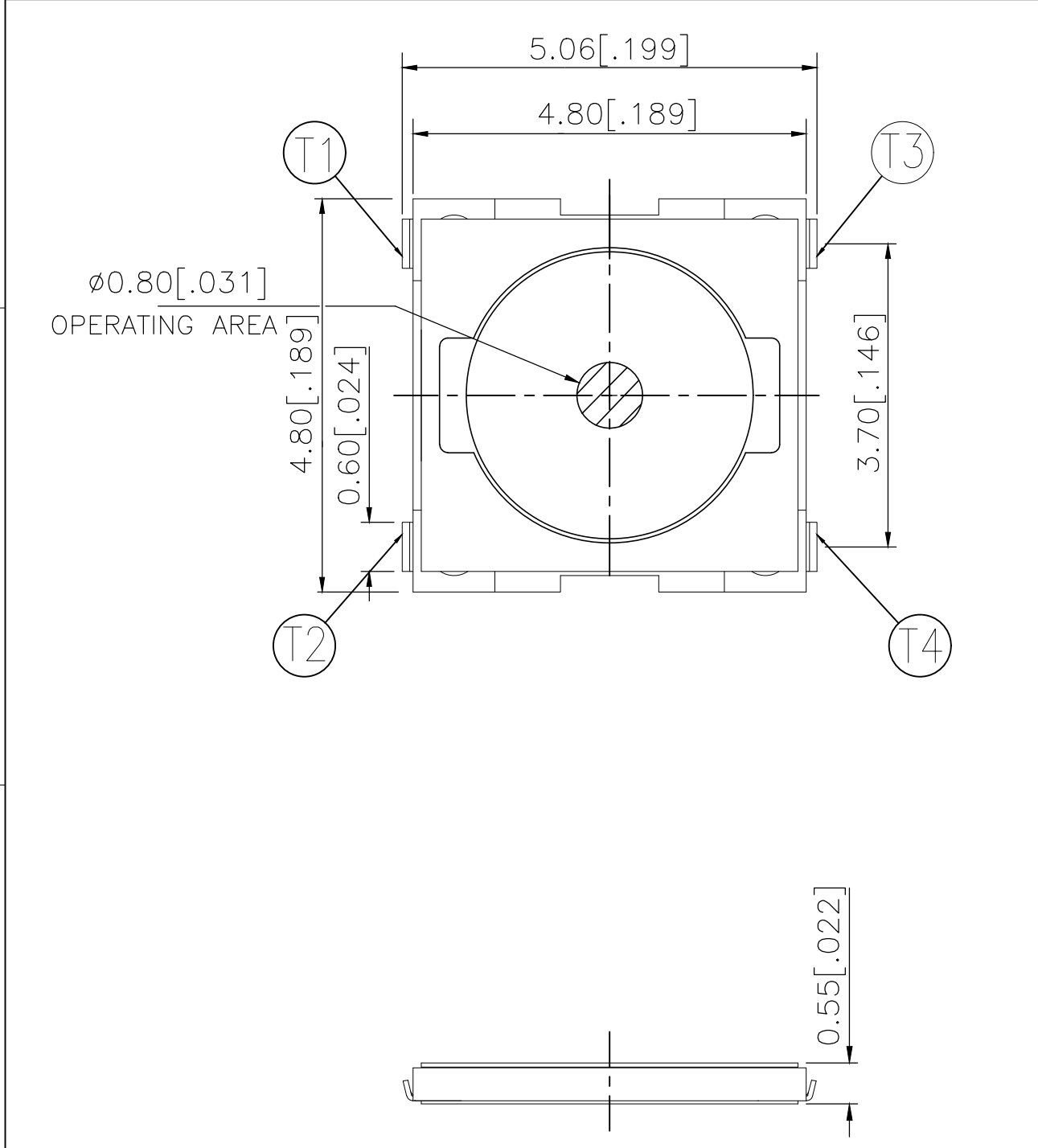
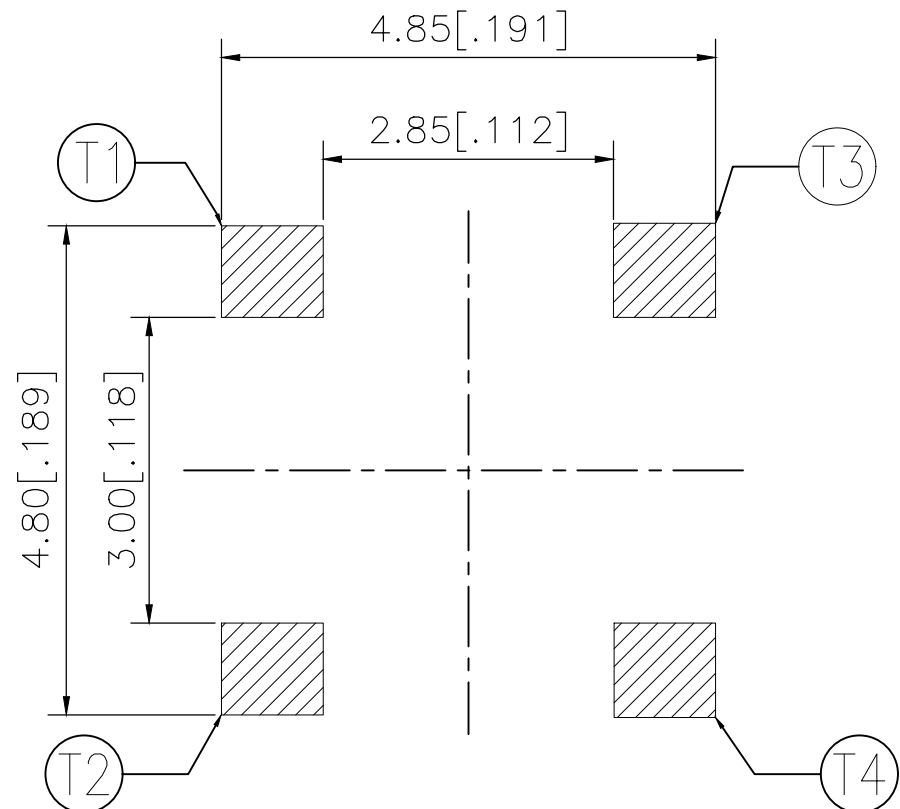


REVISIONS					
P	LTR	DESCRIPTION	DATE	DWN	APVD
	B	REVISED PER ECR-19-004770	10APR2019	SR	DD



CIRCUIT DIAGRAM



P.C.B. LAYOUT

360±60	MC SLPT4848C5DTR	2337233-5
260±50	MC SLPT4848C4DTR	2337233-4
200±50	MC SLPT4848C3DTR	2337233-3
160±50	MC SLPT4848C2DTR	2337233-2
100±50	MC SLPT4848C1DTR	2337233-1
ACTUATION FORCE (gf)	SMART PART NUMBER	PART NUMBER

THIS DRAWING IS A CONTROLLED DOCUMENT.

DIMENSIONS:
mm [INCHES]

MATERIAL
-

TOLERANCES UNLESS OTHERWISE SPECIFIED:

0 PLC ± -
1 PLC ± -
2 PLC ± 0.2 [.008]
3 PLC ± -
4 PLC ± -
ANGLES ± -
FINISH -

DWN GANESH C M 03JUL2018
CHK ALEXANDER SHARPE 03JUL2018
APVD ALEXANDER SHARPE 03JUL2018
PRODUCT SPEC
APPLICATION SPEC
WEIGHT

CUSTOMER DRAWING

SCALE NTS

TE Connectivity Ltd.

NAME
SWITCH, TACTILE, LOW-PROFILE, MICRO-MINI,
4.8 x 4.8 x 0.55, J BEND, 3.70 PITCH

SIZE A3
CAGE CODE 00779
DRAWING NO C-2337233
RESTRICTED TO -

SHEET 1 of 3
REV B

THIS DRAWING IS UNPUBLISHED.	RELEASED FOR PUBLICATION
© COPYRIGHT — TE Connectivity Ltd.	ALL RIGHTS RESERVED.

NOTES:

1. MATERIALS:

TERMINAL: COPPER ALLOY, SILVER OVER NICKEL FINISH
BASE: THERMOPLASTIC, BLACK
TAPE: POLYIMIDE
CONTACT: STAINLESS STEEL, SILVER OVER NICKEL FINISH

2. COMPLIANCE:

ALL MATERIALS AND FINISHES SHALL COMPLY WITH
EU DIRECTIVE 2002/95/EC OF 27JAN2003(RoHS)

3. SPECIFICATIONS:

RATING: 50 mA, 12V DC
CONTACT RESISTANCE: 100mΩ MAXIMUM (INITIAL)
INSULATION RESISTANCE: 100MΩ MINIMUM (INITIAL)
DIELECTRIC STRENGTH: 100 V AC, 1 MINUTE
OPERATING LIFE: 2337233-1 (100gf) = 1,000,000 CYCLES WITH LOAD
2337233-2 (160gf) = 1,000,000 CYCLES WITH LOAD
2337233-3 (200gf) = 500,000 CYCLES WITH LOAD
2337233-4 (260gf) = 500,000 CYCLES WITH LOAD
2337233-5 (360gf) = 200,000 CYCLES WITH LOAD

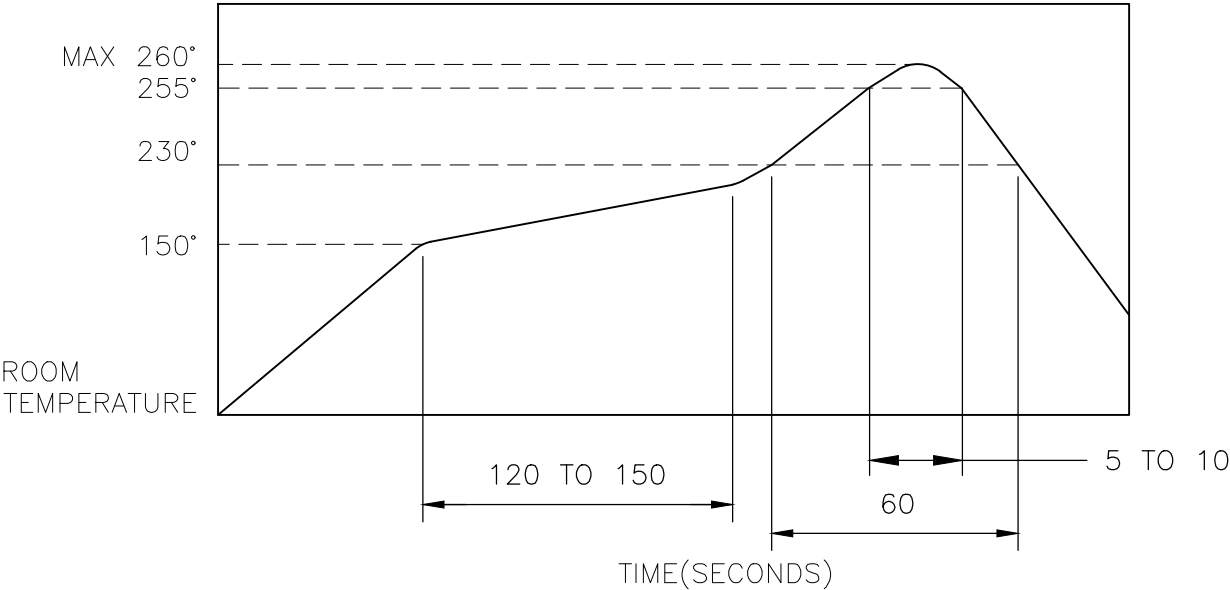
TRAVEL: 0.2±0.1 [.008±.004]

ACTUATION FORCE: 2337233-1 = 100±50gf
2337233-2 = 160±50gf
2337233-3 = 200±50gf
2337233-4 = 260±50gf
2337233-5 = 360±60gf

OPERATING TEMPERATURE: -30° TO 80°C
STORAGE TEMPERATURE: -40° TO 85°C

4. SOLDER CONDITIONS :

SMT:



THE CONDITON NOTED ABOVE IS THE TEMPERATURE OF THE COPPER FOIL ON THE SURFACE OF THE PCB. THERE ARE CASES WHERE THE TEMPERATURE OF THE BOARD GREATLY DIFFERS FROM THE SURFACE OF THE SWITCH. DO NOT ALLOW THE SURFACE TEMPERATURE OF THE SWITCH TO EXCEED 260°C.

REVISIONS					
P	LTR	DESCRIPTION	DATE	DWN	APVD
	—	SEE SHEET 1	—	—	—

MANUAL SOLDERING:

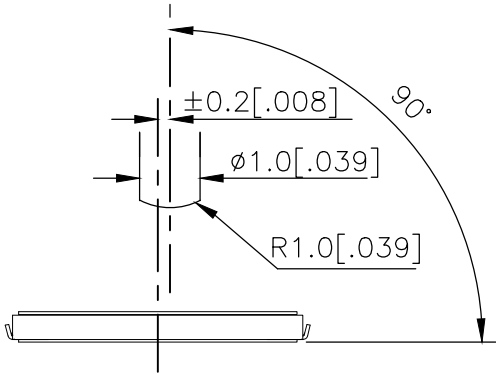
SOLDERING TEMPERATURE	350°C MAXIMUM
CONTINUOUS SOLDERING TIME	5 SECONDS MAXIMUM


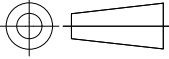
HANDLING PRECAUTIONS:

- CARE SHOULD BE EXERCISED SO THAT FLUX FROM THE TOP SURFACE OF THE PRINTED CIRCUIT BOARD DOES NOT ADHERE TO THE SWITCH.
- DO NOT WASH THE SWITCH

5. OPERATING PRECAUTIONS:

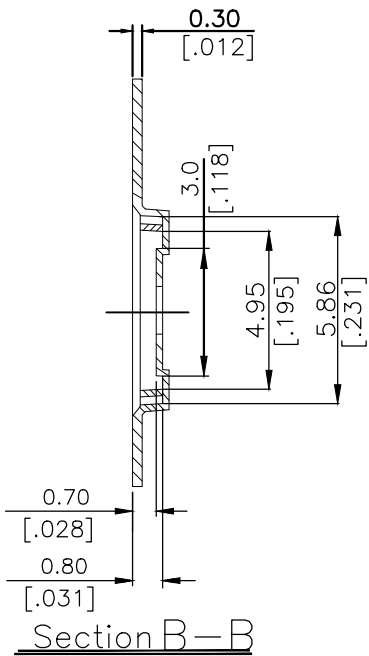
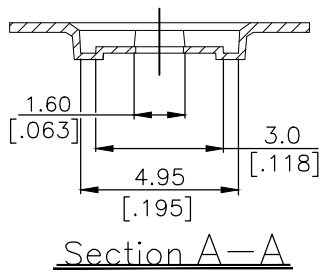
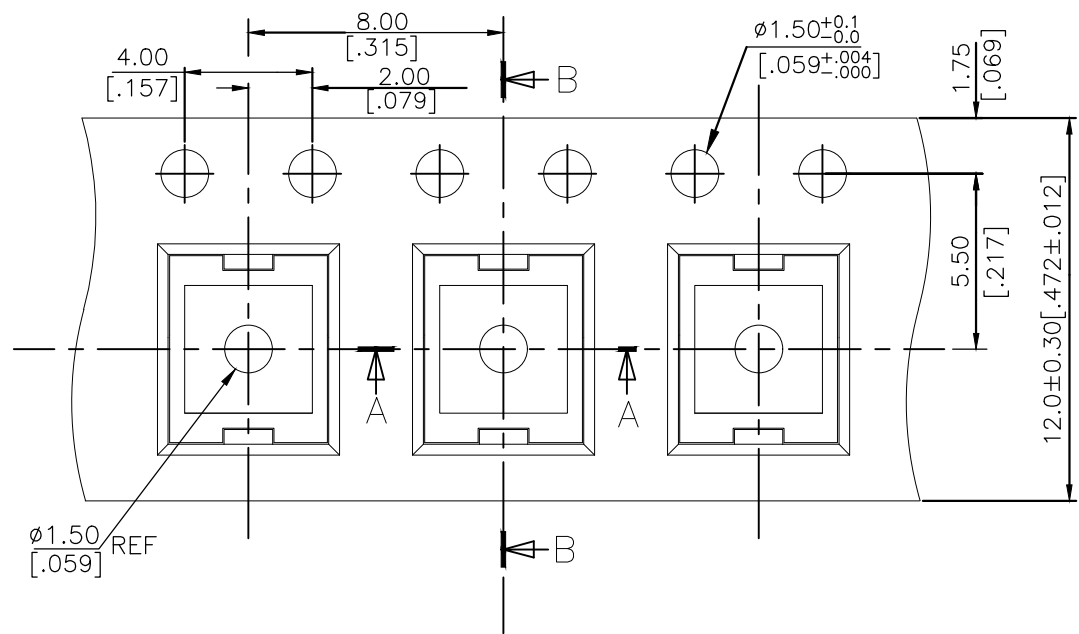
- DO NOT ACTUATE THE SWITCH WITH EXCESSIVE FORCE
- DISCONTINUE FORCE AFTER THE SWITCH HAS BEEN ACTUATED SO AS TO AVOID DEFORMATION OF THE COMPONENTS OF THE SWITCH. DEFORMATION OF THE COMPONENTS MAY CAUSE THE SWITCH TO MALFUNCTION.
- ALIGN THE PLUNGER WITH THE SWITCH TO INSURE PROPER OPERATION



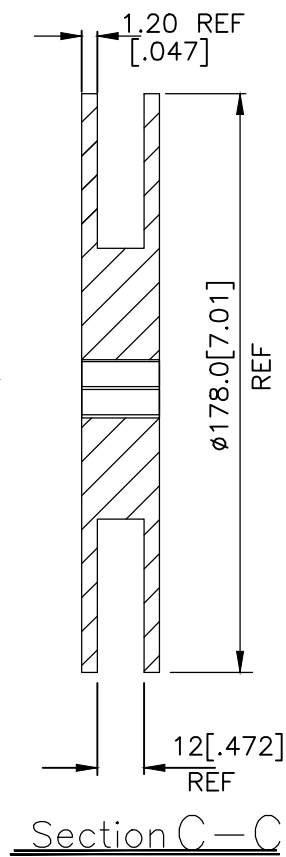
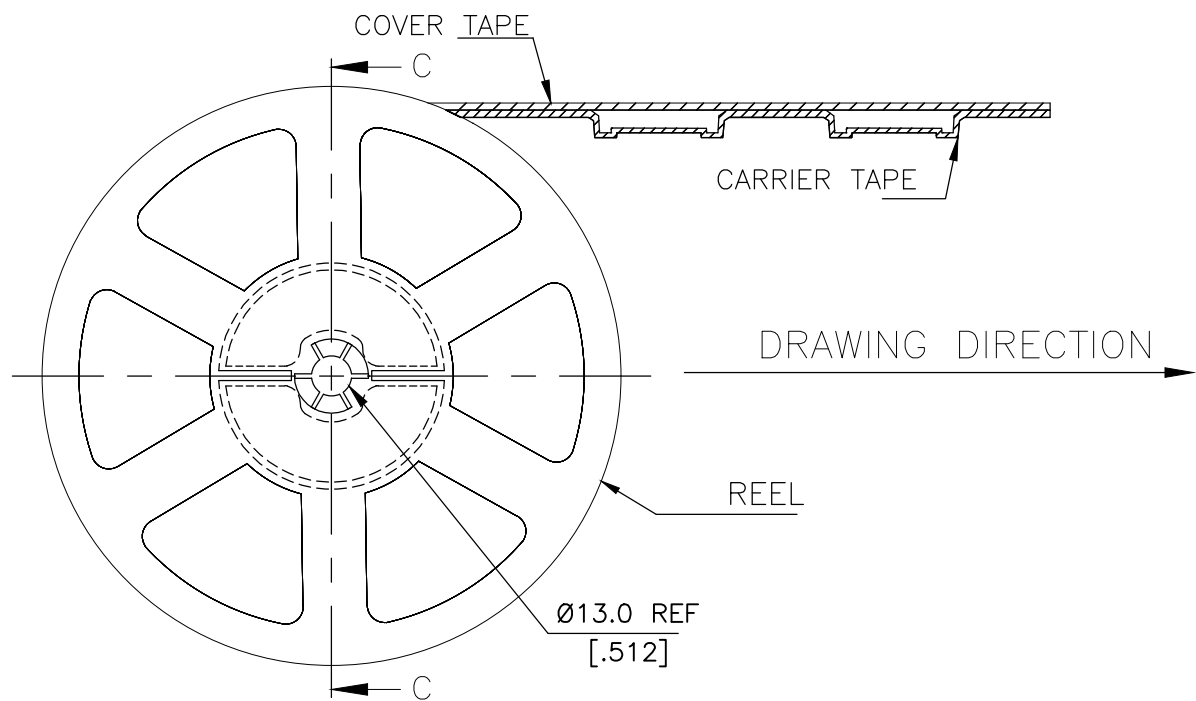
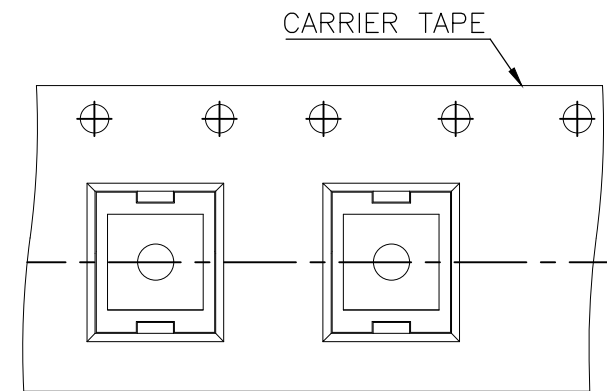
THIS DRAWING IS A CONTROLLED DOCUMENT.		DWN 03JUL2018 GANESH C M	 TE Connectivity Ltd.		
		CHK 03JUL2018 ALEXANDER SHARPE			
DIMENSIONS: mm [INCHES]	TOLERANCES UNLESS OTHERWISE SPECIFIED:	APVD 03JUL2018 ALEXANDER SHARPE	NAME		
		PRODUCT SPEC	SWITCH, TACTILE, LOW-PROFILE, MICRO-MINI, 4.8 x 4.8 x 0.55, J BEND, 3.70 PITCH		
	0 PLC ± — 1 PLC ± — 2 PLC ± 0.2 [.008] 3 PLC ± — 4 PLC ± — ANGLES ± —	APPLICATION SPEC	—		
		—	SIZE	CAGE CODE	DRAWING NO
MATERIAL	FINISH	WEIGHT	A300779		C=2337233
		CUSTOMER DRAWING	SCALE	SHEET	REV
			NTS	2 OF 3	B

REVISIONS					
P	LTR	DESCRIPTION	DATE	DWN	APVD
	—	SEE SHEET 1	—	—	—

THE DIMENSIONS OF CARRIER TAPE AND REEL



ORIENTATION OF PILOT HOLES



6. PACKAGING:
1. THE TAPE AND REEL ARE SHOWN FOR CUSTOMER APPLICATION REFERENCE. PACKAGING NOTES 3 AND 4 ARE REQUIRED BUT NOT ILLUSTRATED.
 2. 2,500 SWITCHES PER REEL.
 3. THE REEL, DESICCANT POUCH AND HUMIDITY CARD ARE SEALED IN A MOISTURE BARRIER BAG PER THE CURRENT REVISION OF IPC/JEDEC J-STD-033, MSL 2A REQUIREMENTS.
 4. THE MOISTURE BARRIER BAG IS LABELED PER THE CURRENT REVISION OF IPC/JEDEC J-STD-033, MSL 2A REQUIREMENTS.

THIS DRAWING IS A CONTROLLED DOCUMENT.		DWN GANESH C M	03JUL2018	TE Connectivity Ltd.	
		CHK ALEXANDER SHARPE	03JUL2018		
		APVD ALEXANDER SHARPE	03JUL2018	NAME SWITCH, TACTILE, LOW-PROFILE, MICRO-MINI, 4.8 x 4.8 x 0.55, J BEND, 3.70 PITCH	
		PRODUCT SPEC			
		APPLICATION SPEC			
		WEIGHT		SIZE A3	CAGE CODE 00779
		CUSTOMER DRAWING		DRAWING NO C-2337233	RESTRICTED TO —
				SCALE NTS	SHEET 3 OF 3
				REV B	

Mouser Electronics

Authorized Distributor

Click to View Pricing, Inventory, Delivery & Lifecycle Information:

[TE Connectivity:](#)

[MCSLPT4848C5DTR](#)