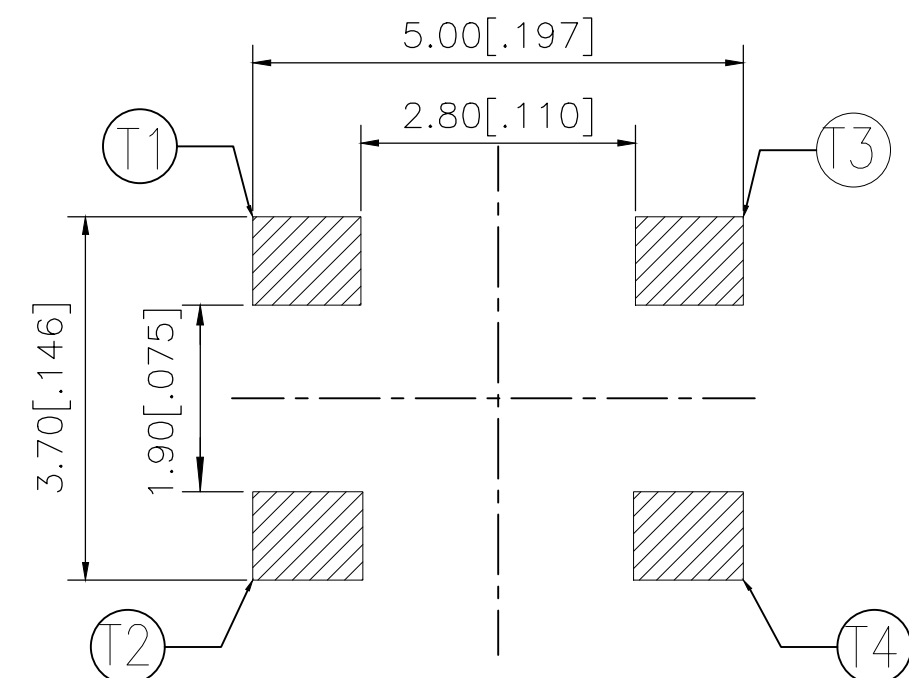

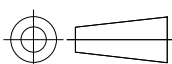


CIRCUIT DIAGRAM



P.C.B. LAYOUT

360±60	MCSLPT4848A5DTR	2337232-5
260±50	MCSLPT4848A4DTR	2337232-4
200±50	MCSLPT4848A3DTR	2337232-3
160±50	MCSLPT4848A2DTR	2337232-2
100±50	MCSLPT4848A1DTR	2337232-1
ACTUATION FORCE (af)	SMART PART NUMBER	PART NUMBER

THIS DRAWING IS A CONTROLLED DOCUMENT.		DWN GANESH C M		DATE 04JUL2018		 TE Connectivity Ltd.	
DIMENSIONS: mm [INCHES]		TOLERANCES UNLESS OTHERWISE SPECIFIED:		CHK ALEXANDER SHARPE		APVD 04JUL2018	
		0 PLC ± -		NAME		SWITCH, TACTILE, LOW-PROFILE, MICRO-MINI, 4.8 x 4.8 x 0.55, J BEND, 2.80 PITCH -	
		1 PLC ± -		PRODUCT SPEC			
		2 PLC ± 0.2 [.008]		—			
		3 PLC ± -		APPLICATION SPEC			
		4 PLC ± -		—			
		ANGLES ± -		WEIGHT			
MATERIAL —		FINISH —		SIZE A3		CAGE CODE 00779	
				DRAWING NO C-2337232		RESTRICTED TO —	
CUSTOMER DRAWING				SCALE NTS		SHEET 1 OF 3	
						REV B	

THIS DRAWING IS UNPUBLISHED.

RELEASED FOR PUBLICATION

- , - .



COPYRIGHT — TE Connectivity Ltd.

ALL RIGHTS RESERVED.

NOTES:

1. MATERIALS:

TERMINAL: COPPER ALLOY, SILVER OVER NICKEL FINISH

BASE: THERMOPLASTIC, BLACK

TAPE: POLYIMIDE

CONTACT: STAINLESS STEEL, SILVER OVER NICKEL FINISH

2. COMPLIANCE:

ALL MATERIALS AND FINISHES SHALL COMPLY WITH

EU DIRECTIVE 2002/95/EC OF 27JAN2003(RoHS)

3. SPECIFICATIONS:

RATING: 50 mA, 12V DC

CONTACT RESISTANCE: 100mΩ MAXIMUM (INITIAL)

INSULATION RESISTANCE: 100MΩ MINIMUM (INITIAL)

DIELECTRIC STRENGTH: 100 V AC, 1 MINUTE

OPERATING LIFE: 2337232-1 (100gf) = 1,000,000 CYCLES WITH LOAD

2337232-2 (160gf) = 1,000,000 CYCLES WITH LOAD

2337232-3 (200gf) = 500,000 CYCLES WITH LOAD

2337232-4 (260gf) = 500,000 CYCLES WITH LOAD

2337232-5 (360gf) = 200,000 CYCLES WITH LOAD

TRAVEL: 0.2±0.1 [.008±.004]

ACTUATION FORCE: 2337232-1 = 100±50gf

2337232-2 = 160±50gf

2337232-3 = 200±50gf

2337232-4 = 260±50gf

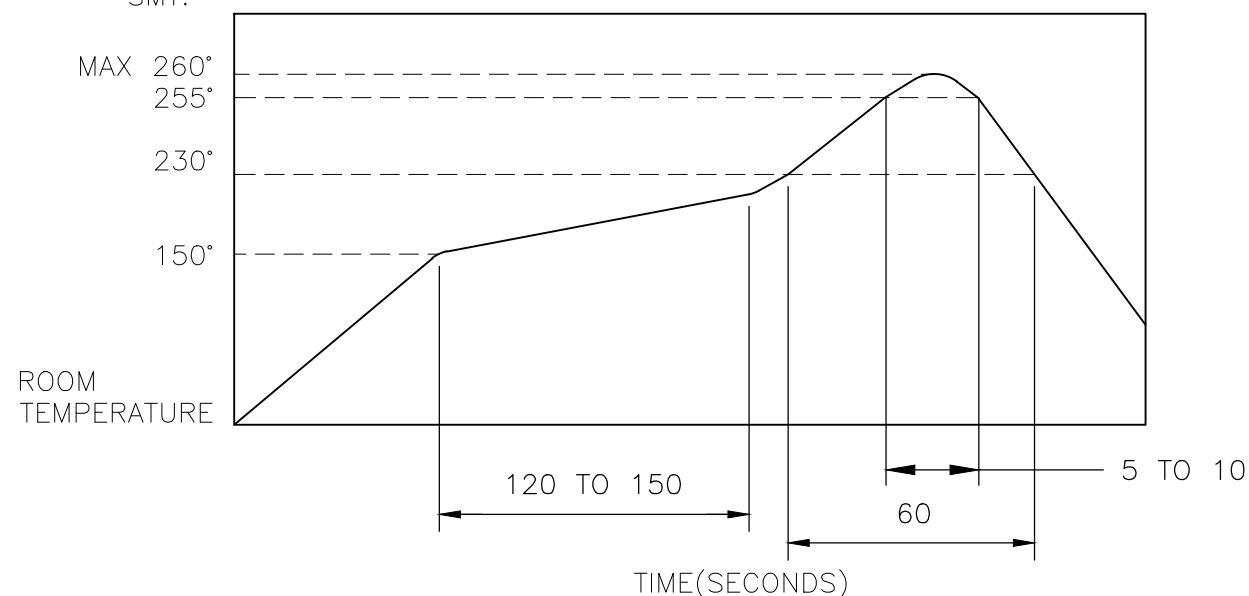
2337232-5 = 360±60gf

OPERATING TEMPERATURE: -30° TO 80°C

STORAGE TEMPERATURE: -40° TO 85°C

4. SOLDER CONDITIONS :

SMT:



THE CONDITON NOTED ABOVE IS THE TEMPERATURE OF THE COPPER FOIL ON THE SURFACE OF THE PCB. THERE ARE CASES WHERE THE TEMPERATURE OF THE BOARD GREATLY DIFFERS FROM THE SURFACE OF THE SWITCH. DO NOT ALLOW THE SURFACE TEMPERATURE OF THE SWITCH TO EXCEED 260°C.

REVISIONS

P	LTR	DESCRIPTION	DATE	DWN	APVD
	—	SEE SHEET 1	—	—	—

MANUAL SOLDERING:

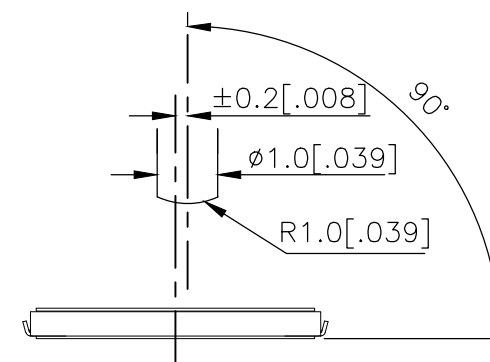
SOLDERING TEMPERATURE	350°C MAXIMUM
CONTINUOUS SOLDERING TIME	5 SECONDS MAXIMUM

HANDLING PRECAUTIONS:

1. CARE SHOULD BE EXERCISED SO THAT FLUX FROM THE TOP SURFACE OF THE PRINTED CIRCUIT BOARD DOES NOT ADHERE TO THE SWITCH.
2. DO NOT WASH THE SWITCH

5. OPERATING PRECAUTIONS:

1. DO NOT ACTUATE THE SWITCH WITH EXCESSIVE FORCE
2. DISCONTINUE FORCE AFTER THE SWITCH HAS BEEN ACTUATED SO AS TO AVOID DEFORMATION OF THE COMPONENTS OF THE SWITCH. DEFORMATION OF THE COMPONENTS MAY CAUSE THE SWITCH TO MALFUNCTION.
3. ALIGN THE PLUNGER WITH THE SWITCH TO INSURE PROPER OPERATION



THIS DRAWING IS A CONTROLLED DOCUMENT.

DWN 04JUL2018

GANESH C M

CHK 04JUL2018

ALEXANDER SHARPE

APVD 04JUL2018

ALEXANDER SHARPE

PRODUCT SPEC

—

APPLICATION SPEC

—

WEIGHT

CUSTOMER DRAWING



TE Connectivity Ltd.

NAME
SWITCH, TACTILE, LOW-PROFILE, MICRO-MINI,
4.8 x 4.8 x 0.55, J BEND, 2.80 PITCH

SIZE	CAGE CODE	DRAWING NO	RESTRICTED TO
A3	00779	C=2337232	—

SCALE NTS

SHEET 2 OF 3

REV B

THIS DRAWING IS UNPUBLISHED.

RELEASED FOR PUBLICATION

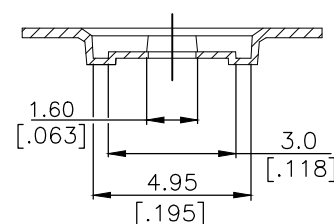
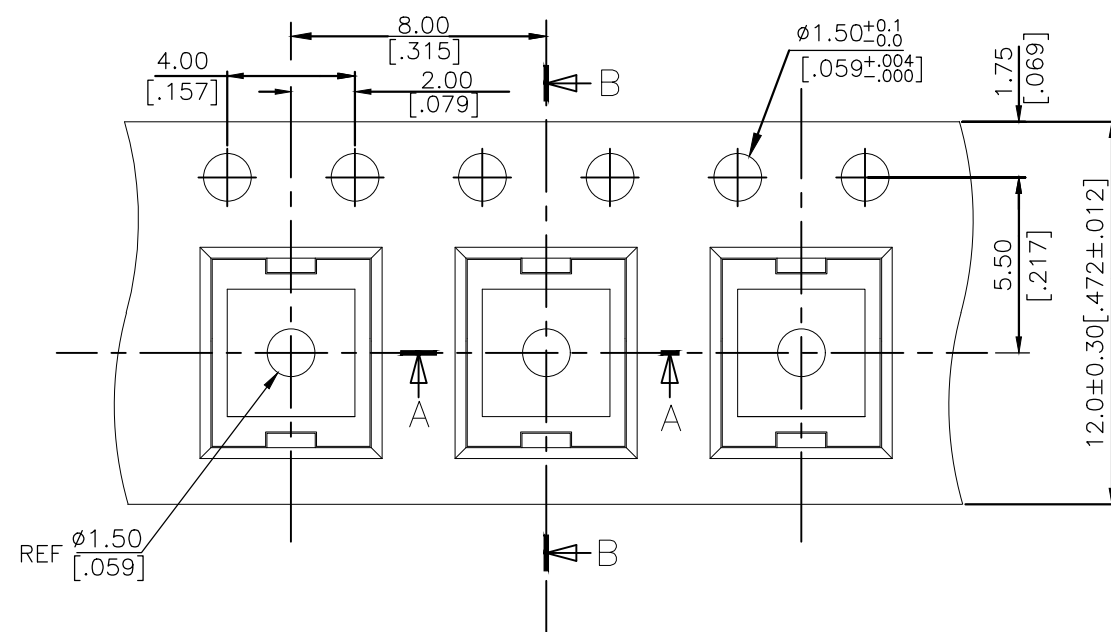
ALL RIGHTS RESERVED.

© COPYRIGHT — TE Connectivity Ltd.

REVISIONS

P	LTR	DESCRIPTION	DATE	DWN	APVD
—	—	SEE SHEET 1	—	—	—

THE DIMENSIONS OF CARRIER TAPE AND REEL

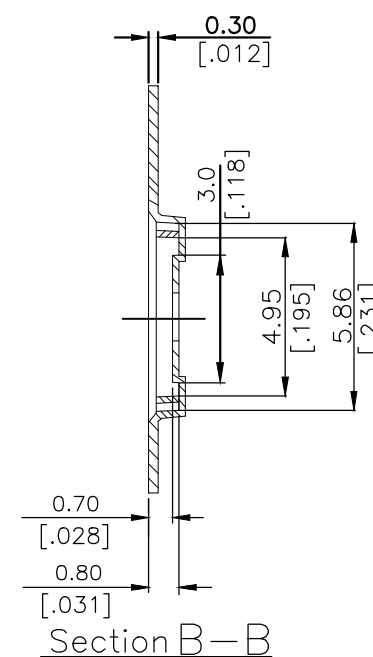


Section A—A

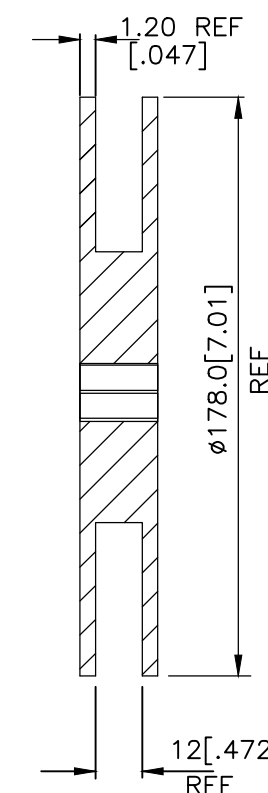
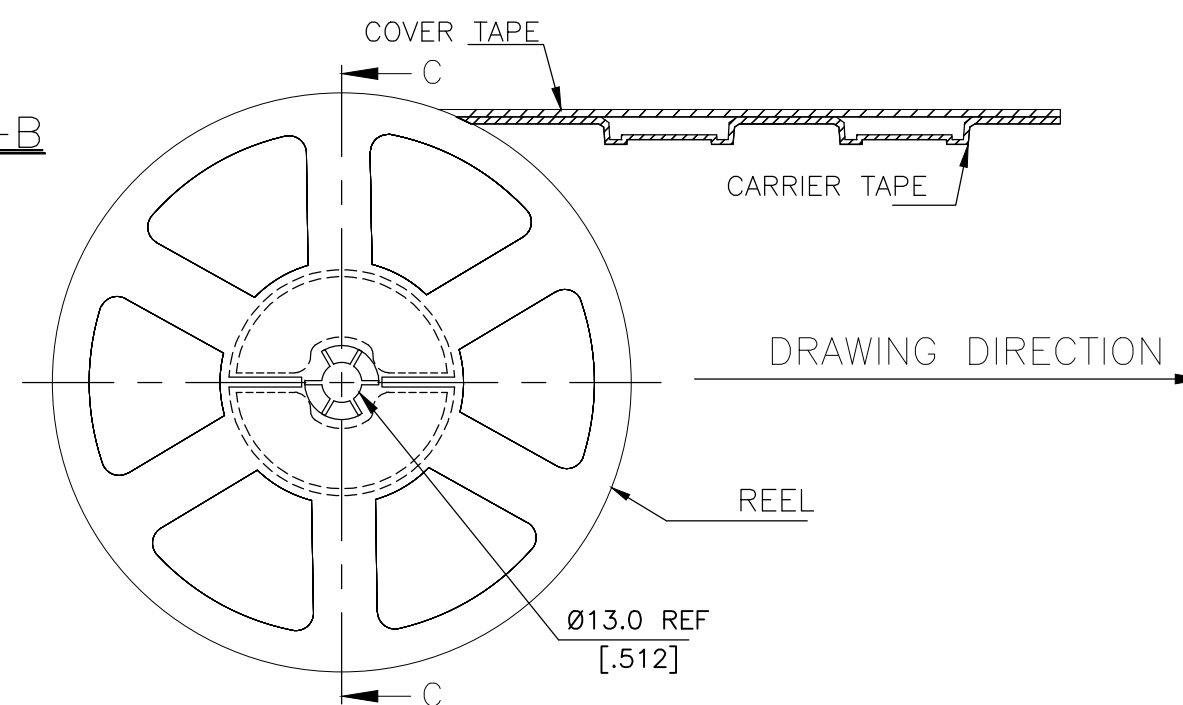
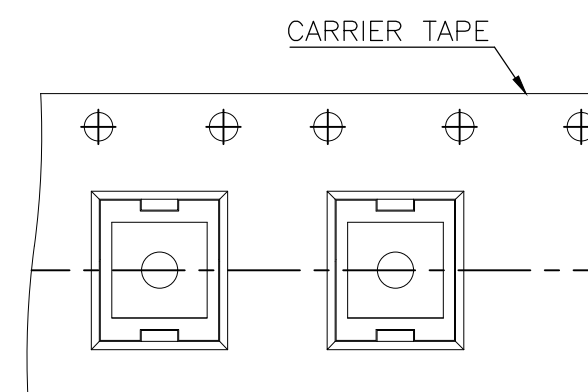
6. PACKAGING:

1. THE TAPE AND REEL ARE SHOWN FOR CUSTOMER APPLICATION REFERENCE. PACKAGING NOTES 3 AND 4 ARE REQUIRED BUT NOT ILLUSTRATED.
2. 2,500 SWITCHES PER REEL.
3. THE REEL, DESICCANT POUCH AND HUMIDITY CARD ARE SEALED IN A MOISTURE BARRIER BAG PER THE CURRENT REVISION OF IPC/JEDEC J-STD-033, MSL 2A REQUIREMENTS.
4. THE MOISTURE BARRIER BAG IS LABELED PER THE CURRENT REVISION OF IPC/JEDEC J-STD-033, MSL 2A REQUIREMENTS.

ORIENTATION OF PILOT HOLES



Section B—B



Section C—C

THIS DRAWING IS A CONTROLLED DOCUMENT.

DWN GANESH C M 04JUL2018

CHK ALEXANDER SHARPE 04JUL2018

APVD ALEXANDER SHARPE 04JUL2018

PRODUCT SPEC

APPLICATION SPEC

WEIGHT

CUSTOMER DRAWING



TE Connectivity Ltd.

NAME
SWITCH, TACTILE, LOW-PROFILE, MICRO-MINI,
4.8 x 4.8 x 0.55, J BEND, 2.80 PITCH

SIZE CAGE CODE DRAWING NO RESTRICTED TO

A3 00779 C-2337232

SCALE NTS

SHEET 3 OF 3

REV B

Mouser Electronics

Authorized Distributor

Click to View Pricing, Inventory, Delivery & Lifecycle Information:

[TE Connectivity:](#)

[MCSLPT4848A1DTR](#)