

THIS DRAWING IS UNPUBLISHED.	RELEASED FOR PUBLICATION - , - .
© COPYRIGHT - TE Connectivity Ltd.	ALL RIGHTS RESERVED.

NOTES:

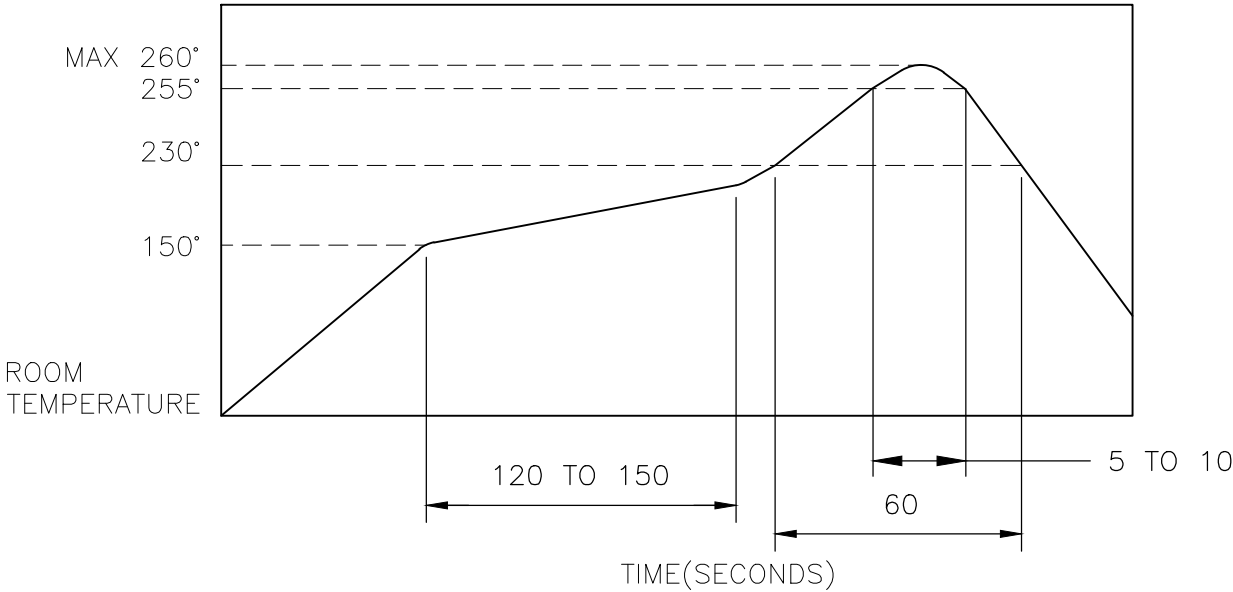
1. MATERIALS:
TERMINAL: COPPER ALLOY, SILVER OVER NICKEL FINISH
BASE: THERMOPLASTIC, BLACK
TAPE: POLYIMIDE
CONTACT: STAINLESS STEEL, SILVER OVER NICKEL FINISH
2. COMPLIANCE:
ALL MATERIALS AND FINISHES SHALL COMPLY WITH
EU DIRECTIVE 2002/95/EC OF 27JAN2003(RoHS)
3. SPECIFICATIONS:
RATING: 50 mA, 12V DC
CONTACT RESISTANCE: 100mΩ MAXIMUM (INITIAL)
INSULATION RESISTANCE: 100MΩ MINIMUM (INITIAL)
DIELECTRIC STRENGTH: 100 V AC, 1 MINUTE
OPERATING LIFE: 2337232-1 (100gf) = 1,000,000 CYCLES WITH LOAD
2337232-2 (160gf) = 1,000,000 CYCLES WITH LOAD
2337232-3 (200gf) = 500,000 CYCLES WITH LOAD
2337232-4 (260gf) = 500,000 CYCLES WITH LOAD
2337232-5 (360gf) = 200,000 CYCLES WITH LOAD

TRAVEL: 0.2±0.1 [.008±.004]
ACTUATION FORCE: 2337232-1 = 100±50gf
2337232-2 = 160±50gf
2337232-3 = 200±50gf
2337232-4 = 260±50gf
2337232-5 = 360±60gf

OPERATING TEMPERATURE: -30° TO 80°C
STORAGE TEMPERATURE: -40° TO 85°C

4. SOLDER CONDITIONS :

SMT:



THE CONDITON NOTED ABOVE IS THE TEMPERATURE OF THE COPPER FOIL ON THE SURFACE OF THE PCB. THERE ARE CASES WHERE THE TEMPERATURE OF THE BOARD GREATLY DIFFERS FROM THE SURFACE OF THE SWITCH. DO NOT ALLOW THE SURFACE TEMPERATURE OF THE SWITCH TO EXCEED 260°C.

REVISIONS					
P	LTR	DESCRIPTION	DATE	DWN	APVD
	-	SEE SHEET 1	-	-	-

MANUAL SOLDERING:

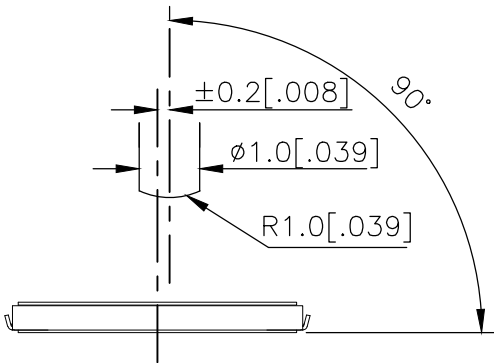
SOLDERING TEMPERATURE	350°C MAXIMUM
CONTINUOUS SOLDERING TIME	5 SECONDS MAXIMUM


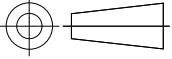
HANDLING PRECAUTIONS:

1. CARE SHOULD BE EXERCISED SO THAT FLUX FROM THE TOP SURFACE OF THE PRINTED CIRCUIT BOARD DOES NOT ADHERE TO THE SWITCH.
2. DO NOT WASH THE SWITCH

5. OPERATING PRECAUTIONS:

1. DO NOT ACTUATE THE SWITCH WITH EXCESSIVE FORCE
2. DISCONTINUE FORCE AFTER THE SWITCH HAS BEEN ACTUATED SO AS TO AVOID DEFORMATION OF THE COMPONENTS OF THE SWITCH. DEFORMATION OF THE COMPONENTS MAY CAUSE THE SWITCH TO MALFUNCTION.
3. ALIGN THE PLUNGER WITH THE SWITCH TO INSURE PROPER OPERATION



THIS DRAWING IS A CONTROLLED DOCUMENT.		DWN GANESH C M 04JUL2018	 TE Connectivity Ltd.		
		CHK ALEXANDER SHARPE 04JUL2018			
DIMENSIONS: mm [INCHES]	TOLERANCES UNLESS OTHERWISE SPECIFIED:	APVD ALEXANDER SHARPE 04JUL2018	NAME SWITCH, TACTILE, LOW-PROFILE, MICRO-MINI, 4.8 x 4.8 x 0.55, J BEND, 2.80 PITCH		
		PRODUCT SPEC			
	0 PLC ± - 1 PLC ± - 2 PLC ± 0.2 [.008] 3 PLC ± - 4 PLC ± - ANGLES ± -	APPLICATION SPEC			
		FINISH			
MATERIAL		WEIGHT	SIZE A3	CAGE CODE 00779	DRAWING NO C-2337232
		CUSTOMER DRAWING	SCALE NTS	SHEET 2 OF 3	REV B

THIS DRAWING IS UNPUBLISHED.

RELEASED FOR PUBLICATION

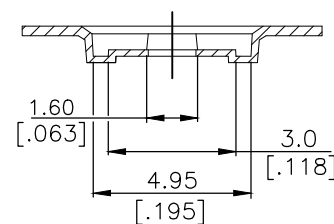
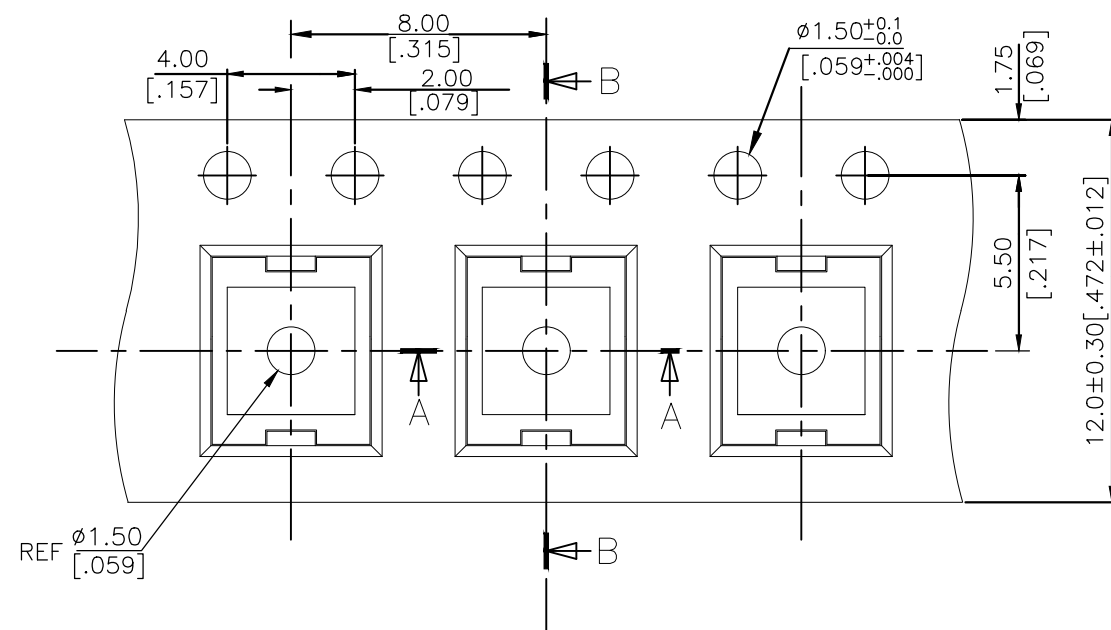
ALL RIGHTS RESERVED.

© COPYRIGHT — TE Connectivity Ltd.

REVISIONS

P	LTR	DESCRIPTION	DATE	DWN	APVD
—	—	SEE SHEET 1	—	—	—

THE DIMENSIONS OF CARRIER TAPE AND REEL

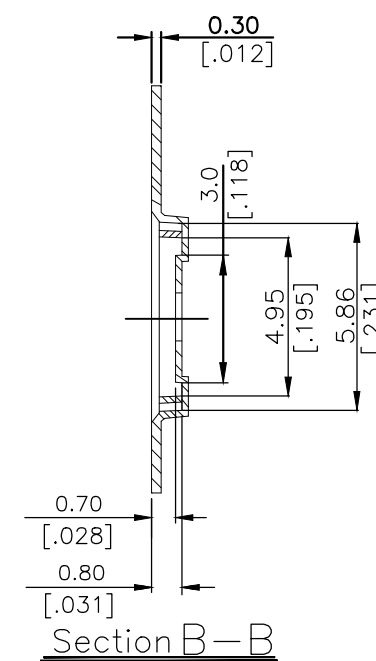


Section A-A

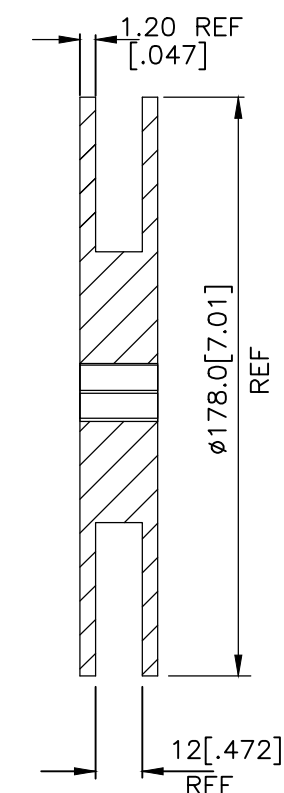
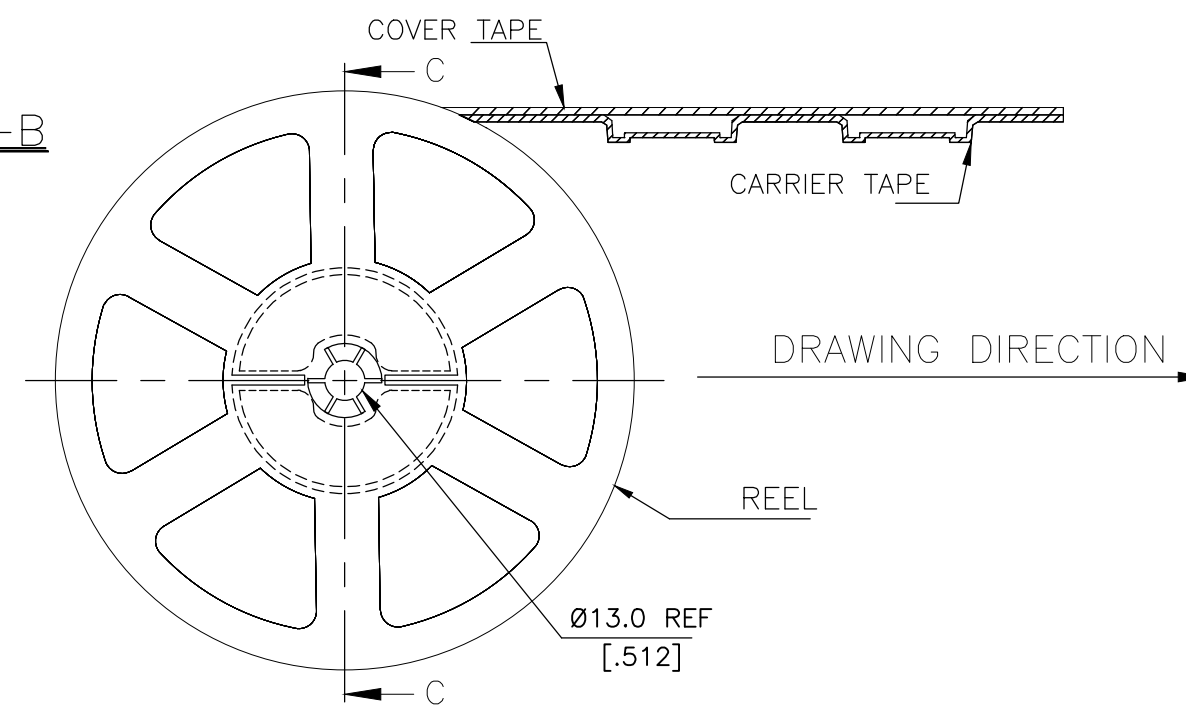
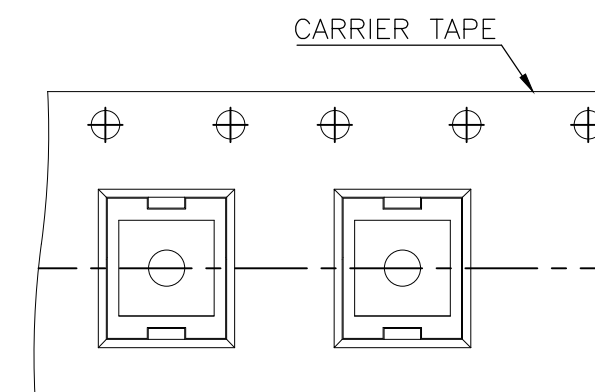
6. PACKAGING:

1. THE TAPE AND REEL ARE SHOWN FOR CUSTOMER APPLICATION REFERENCE. PACKAGING NOTES 3 AND 4 ARE REQUIRED BUT NOT ILLUSTRATED.
2. 2,500 SWITCHES PER REEL.
3. THE REEL, DESICCANT POUCH AND HUMIDITY CARD ARE SEALED IN A MOISTURE BARRIER BAG PER THE CURRENT REVISION OF IPC/JEDEC J-STD-033, MSL 2A REQUIREMENTS.
4. THE MOISTURE BARRIER BAG IS LABELED PER THE CURRENT REVISION OF IPC/JEDEC J-STD-033, MSL 2A REQUIREMENTS.


ORIENTATION OF PILOT HOLES



Section B-B



Section C-C

THIS DRAWING IS A CONTROLLED DOCUMENT.		DWN GANESH C M 04JUL2018	 TE Connectivity Ltd.		
		CHK ALEXANDER SHARPE 04JUL2018			
		APVD ALEXANDER SHARPE 04JUL2018	NAME SWITCH, TACTILE, LOW-PROFILE, MICRO-MINI, 4.8 x 4.8 x 0.55, J BEND, 2.80 PITCH		
DIMENSIONS: mm [INCHES]		PRODUCT SPEC			
		APPLICATION SPEC			
		WEIGHT	SIZE A3	CAGE CODE 00779	DRAWING NO C-2337232
MATERIAL		FINISH	RESTRICTED TO		
			CUSTOMER DRAWING		
			SCALE NTS	SHEET 3 OF 3	REV B

Mouser Electronics

Authorized Distributor

Click to View Pricing, Inventory, Delivery & Lifecycle Information:

[TE Connectivity:](#)

[MCSLPT4848A4DTR](#)