

THIS DRAWING IS UNPUBLISHED.

RELEASED FOR PUBLICATION

- , - .

© COPYRIGHT — TE Connectivity Ltd.

ALL RIGHTS RESERVED.

REVISIONS

P	LTR	DESCRIPTION	DATE	DWN	APVD
	—	SEE SHEET 1	—	—	—

NOTES:

1. MATERIALS:

TERMINAL: COPPER ALLOY, SILVER OVER NICKEL FINISH

BASE: THERMOPLASTIC, BLACK

TAPE: POLYIMIDE

CONTACT: STAINLESS STEEL, SILVER OVER NICKEL FINISH

2. COMPLIANCE:

ALL MATERIALS AND FINISHES SHALL COMPLY WITH

EU DIRECTIVE 2002/95/EC OF 27JAN2003(RoHS)

3. SPECIFICATIONS:

RATING: 50 mA, 12V DC

CONTACT RESISTANCE: 100mΩ MAXIMUM (INITIAL)

INSULATION RESISTANCE: 100MΩ MINIMUM (INITIAL)

DIELECTRIC STRENGTH: 100 V AC, 1 MINUTE

OPERATING LIFE: 2337232-1 (100gf) = 1,000,000 CYCLES WITH LOAD

2337232-2 (160gf) = 1,000,000 CYCLES WITH LOAD

2337232-3 (200gf) = 500,000 CYCLES WITH LOAD

2337232-4 (260gf) = 500,000 CYCLES WITH LOAD

2337232-5 (360gf) = 200,000 CYCLES WITH LOAD

TRAVEL: 0.2±0.1 [.008±.004]

ACTUATION FORCE: 2337232-1 = 100±50gf

2337232-2 = 160±50gf

2337232-3 = 200±50gf

2337232-4 = 260±50gf

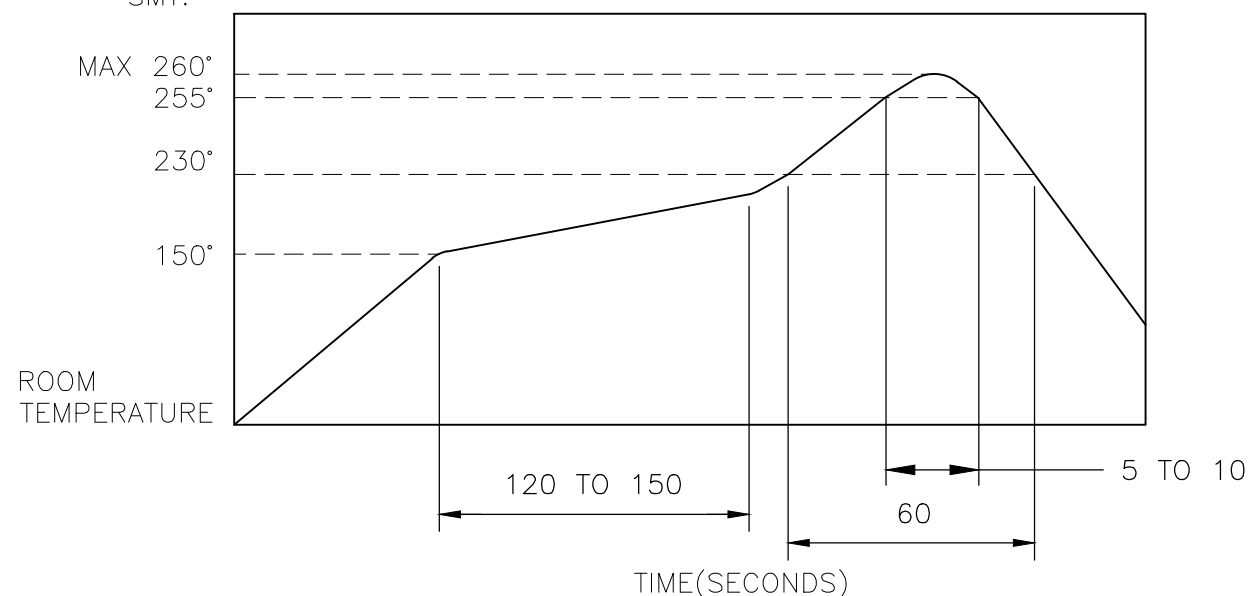
2337232-5 = 360±60gf

OPERATING TEMPERATURE: -30° TO 80°C

STORAGE TEMPERATURE: -40° TO 85°C

4. SOLDER CONDITIONS :

SMT:



THE CONDITON NOTED ABOVE IS THE TEMPERATURE OF THE COPPER FOIL ON THE SURFACE OF THE PCB. THERE ARE CASES WHERE THE TEMPERATURE OF THE BOARD GREATLY DIFFERS FROM THE SURFACE OF THE SWITCH. DO NOT ALLOW THE SURFACE TEMPERATURE OF THE SWITCH TO EXCEED 260°C.

MANUAL SOLDERING:

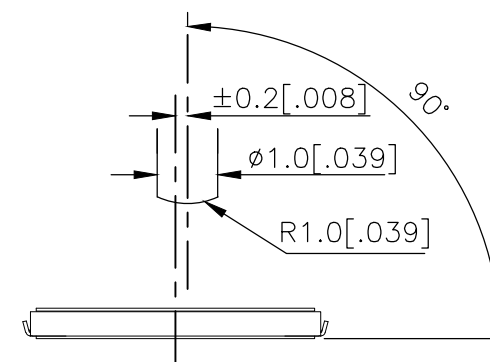
SOLDERING TEMPERATURE	350°C MAXIMUM
CONTINUOUS SOLDERING TIME	5 SECONDS MAXIMUM

HANDLING PRECAUTIONS:

1. CARE SHOULD BE EXERCISED SO THAT FLUX FROM THE TOP SURFACE OF THE PRINTED CIRCUIT BOARD DOES NOT ADHERE TO THE SWITCH.
2. DO NOT WASH THE SWITCH

5. OPERATING PRECAUTIONS:

1. DO NOT ACTUATE THE SWITCH WITH EXCESSIVE FORCE
2. DISCONTINUE FORCE AFTER THE SWITCH HAS BEEN ACTUATED SO AS TO AVOID DEFORMATION OF THE COMPONENTS OF THE SWITCH. DEFORMATION OF THE COMPONENTS MAY CAUSE THE SWITCH TO MALFUNCTION.
3. ALIGN THE PLUNGER WITH THE SWITCH TO INSURE PROPER OPERATION



THIS DRAWING IS A CONTROLLED DOCUMENT.

DWN 04JUL2018

GANESH C M

CHK 04JUL2018

ALEXANDER SHARPE

APVD 04JUL2018

ALEXANDER SHARPE

PRODUCT SPEC

—

APPLICATION SPEC

—

WEIGHT

—

—

—

—

—

—

—

—

—



TE Connectivity Ltd.

NAME
SWITCH, TACTILE, LOW-PROFILE, MICRO-MINI,
4.8 x 4.8 x 0.55, J BEND, 2.80 PITCH

SIZE CAGE CODE DRAWING NO RESTRICTED TO

A3 00779 C-2337232 —

—

—

—

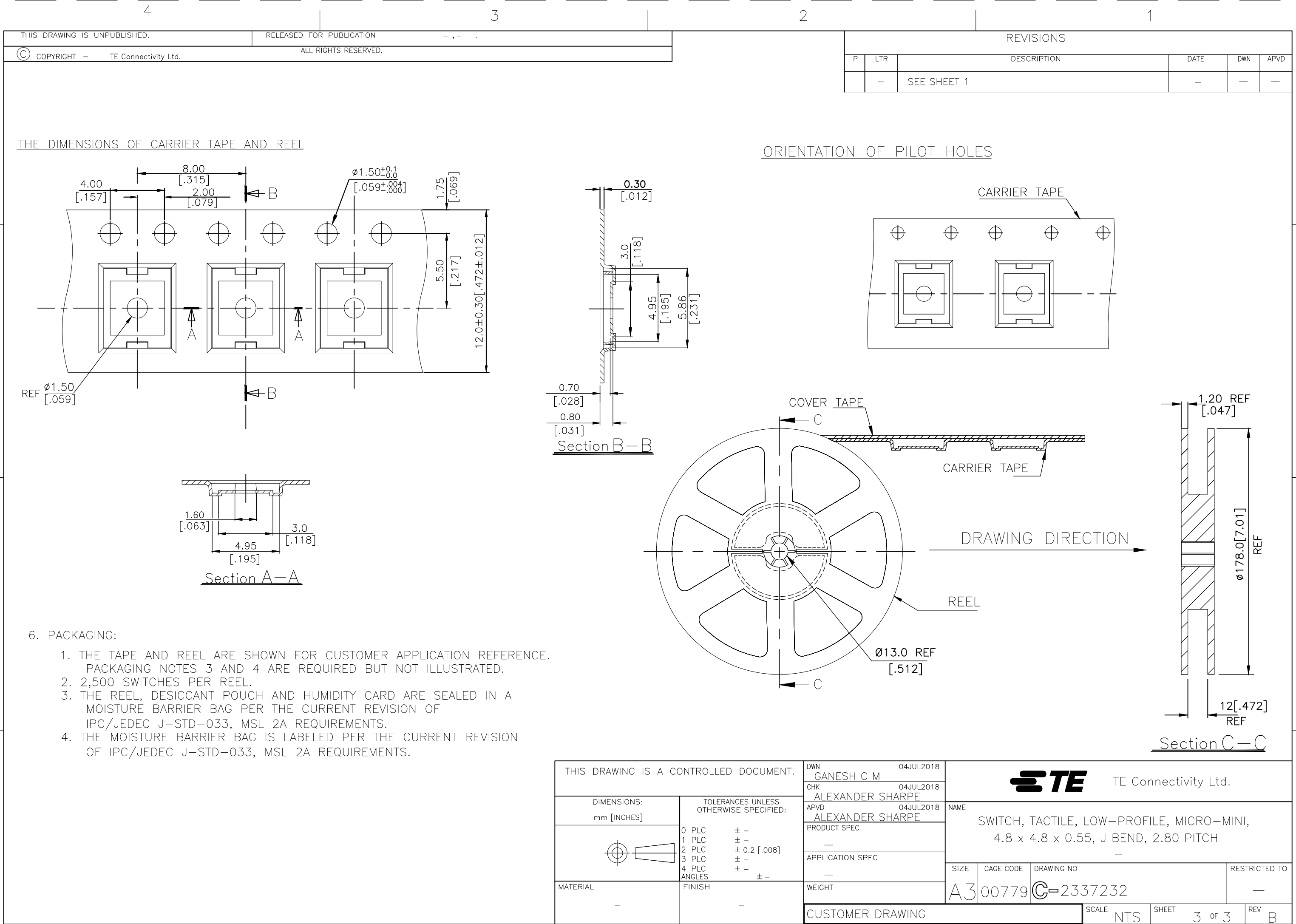
—

—

—

—

—



Mouser Electronics

Authorized Distributor

Click to View Pricing, Inventory, Delivery & Lifecycle Information:

[TE Connectivity:](#)

[MCSLPT4848A3DTR](#)